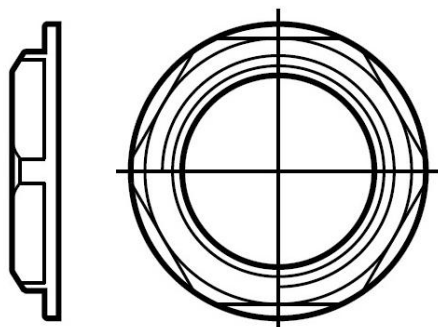


Plastic locknuts

Item codes : from 386551 to 386558, from 386561 to 386578, from 386651 to 386658, from 386661 to 386678, from 386871 to 386888



SUMMARY

PAGES

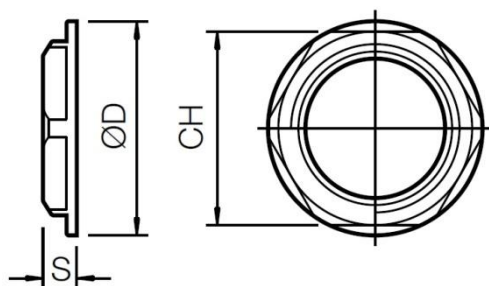
- 1. Description and applications 1
- 2. Dimensions and compatibility 1
- 3. Technical features 2
- 4. Environmental profile 3
- 5. Conformity and approvals 3

1. DESCRIPTION AND APPLICATIONS

Polyamide hexagonal locknut with limited overall dimensions to be used also in narrow spaces. It can be used with all types of connectors and guaranteed good mechanical and thermal performances. To assure the best sealing performances the use of gasket is recommended.

2. DIMENSIONS AND COMPATIBILITY

Dimensions and packaging:



Item GREY RAL7001	Thread	Dimensions [mm]			Pack [pcs]
		CH	S	øD	
386571	M12	19,0	5,0	21,0	50
386572	M16	22,0	5,0	24,0	50
386573	M20	26,0	6,0	28,0	50
386574	M25	32,0	6,0	35,0	50
386575	M32	41,0	7,0	43,0	25
386576	M40	50,0	7,0	56,0	25
386577	M50	60,0	8,0	66,0	10
386578	M63	75,0	8,0	81,0	10

Item GREY RAL7001	Thread	Dimensions [mm]			Pack [pcs]
		CH	S	øD	
386561	PG7	19,0	5,0	21,0	50
386562	PG9	22,0	5,0	24,0	50
386563	PG11	24,0	5,0	26,0	50
386564	PG13,5	26,0	6,0	28,0	50
386565	PG16	32,0	6,0	35,0	50
386566	PG21	36,0	7,0	38,0	50
386567	PG29	46,0	7,0	51,0	25
386568	PG36	60,0	8,0	66,0	10
386569	PG42	70,0	8,0	76,0	10
386570	PG48	75,0	8,0	81,0	10

Item GREY RAL7001	Thread	Dimensions [mm]			Pack [pcs]
		CH	S	øD	
386551	G1/4	19,0	5,0	21,0	50
386552	G3/8	22,0	5,0	24,5	50
386553	G1/2	27,0	6,0	30,0	50
386554	G3/4	32,0	7,0	35,5	50
386555	G1	39,0	7,0	43,0	25
386556	G1 1/4	50,0	8,0	55,0	25
386557	G1 1/2	60,0	8,0	66,0	10
386558	G2	70,0	8,0	78,0	10

Item BLACK RAL9001	Thread	Dimensions [mm]			Pack [pcs]
		CH	S	øD	
386671	M12	19,0	5,0	21,0	50
386672	M16	22,0	5,0	24,0	50
386673	M20	26,0	6,0	28,0	50
386674	M25	32,0	6,0	35,0	50
386675	M32	41,0	7,0	43,0	25
386676	M40	50,0	7,0	56,0	25
386677	M50	60,0	8,0	66,0	10
386678	M63	75,0	8,0	81,0	10

PSP plastic cable-glands

Item codes : from 386551 to 386558, from 386561 to 386578, from 386651 to 386658, from 386661 to 386678, from 386871 to 386888

Item BLACK RAL9001	Thread	Dimensions [mm]			Pack [pcs]
		CH	S	øD	
386661	PG7	19,0	5,0	21,0	50
386662	PG9	22,0	5,0	24,0	50
386663	PG11	24,0	5,0	26,0	50
386664	PG13,5	26,0	6,0	28,0	50
386665	PG16	32,0	6,0	35,0	50
386666	PG21	36,0	7,0	38,0	50
386667	PG29	46,0	7,0	51,0	25
386668	PG36	60,0	8,0	66,0	10
386669	PG42	70,0	8,0	76,0	10
386670	PG48	75,0	8,0	81,0	10

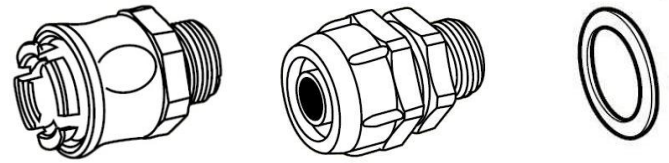
Item BLACK RAL9001	Thread	Dimensions [mm]			Pack [pcs]
		CH	S	øD	
386651	G1/4	19,0	5,0	21,0	50
386652	G3/8	22,0	5,0	24,5	50
386653	G1/2	27,0	6,0	30,0	50
386654	G3/4	32,0	7,0	35,5	50
386655	G1	39,0	7,0	43,0	25
386656	G1 1/4	50,0	8,0	55,0	25
386657	G1 1/2	60,0	8,0	66,0	10
386658	G2	70,0	8,0	78,0	10

Item GREY RAL7035	Thread	Dimensions [mm]			Pack [pcs]
		CH	S	øD	
386881	M12	19,0	5,0	21,0	50
386882	M16	22,0	5,0	24,0	50
386883	M20	26,0	6,0	28,0	50
386884	M25	32,0	6,0	35,0	50
386885	M32	41,0	7,0	43,0	25
386886	M40	50,0	7,0	56,0	25
386887	M50	60,0	8,0	66,0	10
386888	M63	75,0	8,0	81,0	10

Item GREY RAL7035	Thread	Dimensions [mm]			Pack [pcs]
		CH	S	øD	
386871	PG7	19,0	5,0	21,0	50
386872	PG9	22,0	5,0	24,0	50
386873	PG11	24,0	5,0	26,0	50
386874	PG13,5	26,0	6,0	28,0	50
386875	PG16	32,0	6,0	35,0	50
386876	PG21	36,0	7,0	38,0	50
386877	PG29	46,0	7,0	51,0	25
386878	PG36	60,0	8,0	66,0	10
386879	PG42	70,0	8,0	76,0	10
386880	PG48	75,0	8,0	81,0	10

Compatibility:

All types of connectors: LGP series, UNIVERSALE series, ...
Organic fiber gasket



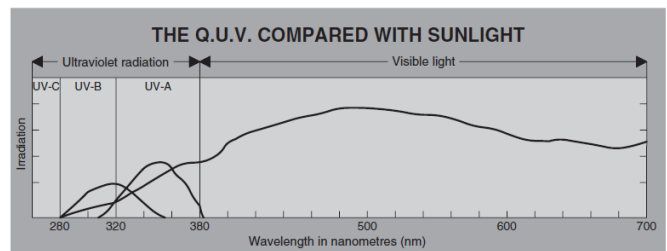
3. TECHNICAL FEATURES

Raw material:

Polyamide PA6.6 [UL94-V0] halogen free and flame retardant fiber glass reinforced.

Resistance to UV rays:

Represents the resistance to the degradation of mechanical performance caused by exposure to UV radiation contained in sunlight. All RTA systems have been subjected to the Q.U.V. test which, with exposure cycles of 4+4 hours, simulates the continued alternation of light and condensation. The locknuts are not recommended for long exposition to UV radiation even if they have a good resistance to UV rays: all locknuts are indicated for internal uses or covered uses.



Operating temperature:

Minimum: -20° C / -4° F
Maximum: +80° C / +176° F

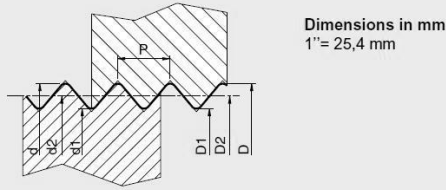
Thread types and dimensions:

ISO THREAD
(EN 60423)

Dimensions in mm

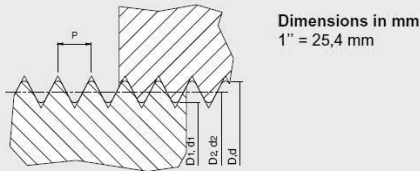
Thread size	Outside thread			Inside thread			
	Pitch	Outside diam.	Medium diam.	Core diam.	Outside diam.	Medium diam.	Inside diam.
	P	d	d ₂	d ₁	D	D ₂	D ₁
M12	1,5	11,968	10,994	10,128	12	11,026	10,376
M16	1,5	15,968	14,994	14,128	16	15,026	14,376
M20	1,5	19,968	18,994	18,128	20	19,026	18,376
M25	1,5	24,968	23,994	23,128	25	24,026	23,376
M32	1,5	31,968	30,994	30,128	32	31,026	30,376
M40	1,5	39,968	38,994	38,128	40	39,026	38,376
M50	1,5	49,968	48,994	48,128	50	49,026	48,376
M63	1,5	62,968	61,994	61,128	63	62,026	61,376

PG THREAD (DIN 40430)



Thread size	Outside diam. d = D	Medium diam. d ₂ = D ₂	Core diam. d ₁ = D ₁	Pitch P	T.p.i. (threads/inch) z
PG 7	12,50	11,89	11,28	1,27	20
PG 9	15,20	14,53	13,86	1,41	18
PG 11	18,60	17,93	17,26	1,41	18
PG 13,5	20,40	19,73	19,06	1,41	18
PG 16	22,50	21,83	21,16	1,41	18
PG 21	28,30	27,54	26,78	1,588	16
PG 29	37,00	36,24	35,48	1,588	16
PG 36	47,00	46,24	45,48	1,588	16
PG 42	54,00	53,24	52,48	1,588	16
PG 48	59,30	58,54	57,78	1,588	16

GAS THREAD (UNI ISO 228)



Thread size	Outside diam. d = D	Medium diam. d ₂ = D ₂	Core diam. d ₁ = D ₁	Pitch P	T.p.i. (threads/inch) z
G 1/4"	13,157	12,301	11,445	1,337	19
G 3/8"	16,662	15,806	14,950	1,337	19
G 1/2"	20,955	19,793	18,631	1,814	14
G 3/4"	26,441	25,279	24,117	1,814	14
G 1"	33,249	31,770	30,291	2,309	11
G1 1/4"	41,910	40,431	38,952	2,309	11
G1 1/2"	47,803	46,324	44,845	2,309	11
G2"	59,614	58,135	56,656	2,309	11
G2 1/2"	75,184	73,705	72,226	2,309	11
G3"	87,884	86,405	84,926	2,309	11
G4"	113,030	111,551	110,072	2,309	11
G5"	138,430	136,951	135,472	2,309	11

4. ENVIRONMENTAL PROFILE

All the items identified in this technical sheet respect in terms of concentration of substances and raw materials the European legislations about dangerous and forbidden substances and chemical preparations.



All items identified in this technical sheet are constituted by raw materials completely recyclable.

5. CONFORMITY AND APPROVALS



All the items identified in this technical sheet are compliant to all the requirements and the regulations currently in force in the European Union about safety, health and environmental issues.