

MOSAIC

NURSE CALL UNIT



INSTALLATION AND USER GUIDE

Contents

DESCRIPTION OF THE SYSTEM ARCHITECTURE	3
Fundamental rules to follow when installing the Mosaic nurse call system	3
Wiring principle	3
Installation principle for a ward	4
Installation principle with call-forwarding over DECT and traceability on telephone coupling product (telephony package not supplied by Legrand)	6
Installation principle with call-forwarding over DECT and traceability on telephone coupling product and corridor display units (telephony package not supplied by Legrand)	8
Selection guide: how to draw up your list of equipment	10
PRESENTATION AND INSTALLATION OF DEVICES	11
0 766 60: 6-direction call display unit	11
0 782 12: 3-direction management module	13
0 782 14: table control unit	14
0 782 89/0 035 67 OR E49: power supplies	14
0 782 04: door unit	15
0 766 85: bathroom call units or call button	16
0 766 63: socket for corded push-button	17
0 783 62: corded push-button	17
0 782 41/46: sockets for hand-held remote control units	18
0 782 45/47: sockets for hand-held remote control units	19
0 782 01/02/03: hand-held remote control units	20
0 782 43: clamp for corded push-button	21
0 783 77/78/79: remote control modules	22
0 766 64: bathroom call pull-cord (18W10)	24
9 804 12: spare part for bathroom call pull-cord	24
0 766 72: double display corridor overdoor light	25
0 766 71: call transfer light for corridors	26
0 766 42: electronic buzzer	26
0 771 50 + 0 782 07: biomedical call plug and socket	27
OPERATING MODE	28
Call + nurse present	28
Bathroom call + nurse present	29
Call for nurse assistance (emergency)	30
Nurse present + call from another room	31
Nurse present + call from another bathroom	32
Call priorities	33
MOSAIC NURSE CALL UNIT WIRING	34
Call + presence installation for nursing homes and residential homes for the elderly	34
Call + presence installation with hand-held remote control units and magnetic sockets	36
Call + presence installation with call via push-button with indicator and information transfer	38
Bed + armchair call + presence installation for nursing homes and residential homes for the elderly with DECT interface (integrated traceability)	40
Call + biomedical + presence installation for clinics and hospitals with corridor display units (integrated traceability)	42
230 V cable for patient call + corridor display units and IP network cabling	44
COMMISSIONING	46
Check before switch-on	46
Resetting the module	47
TROUBLESHOOTING	48

DESCRIPTION OF THE SYSTEM ARCHITECTURE

DESCRIPTION OF THE SYSTEM ARCHITECTURE

Fundamental rules to follow when installing the Mosaic nurse call system

Patient call system products are associated with personal safety. They should therefore be installed by a qualified electrician, in strict accordance with the conditions of installation and the operating instructions.

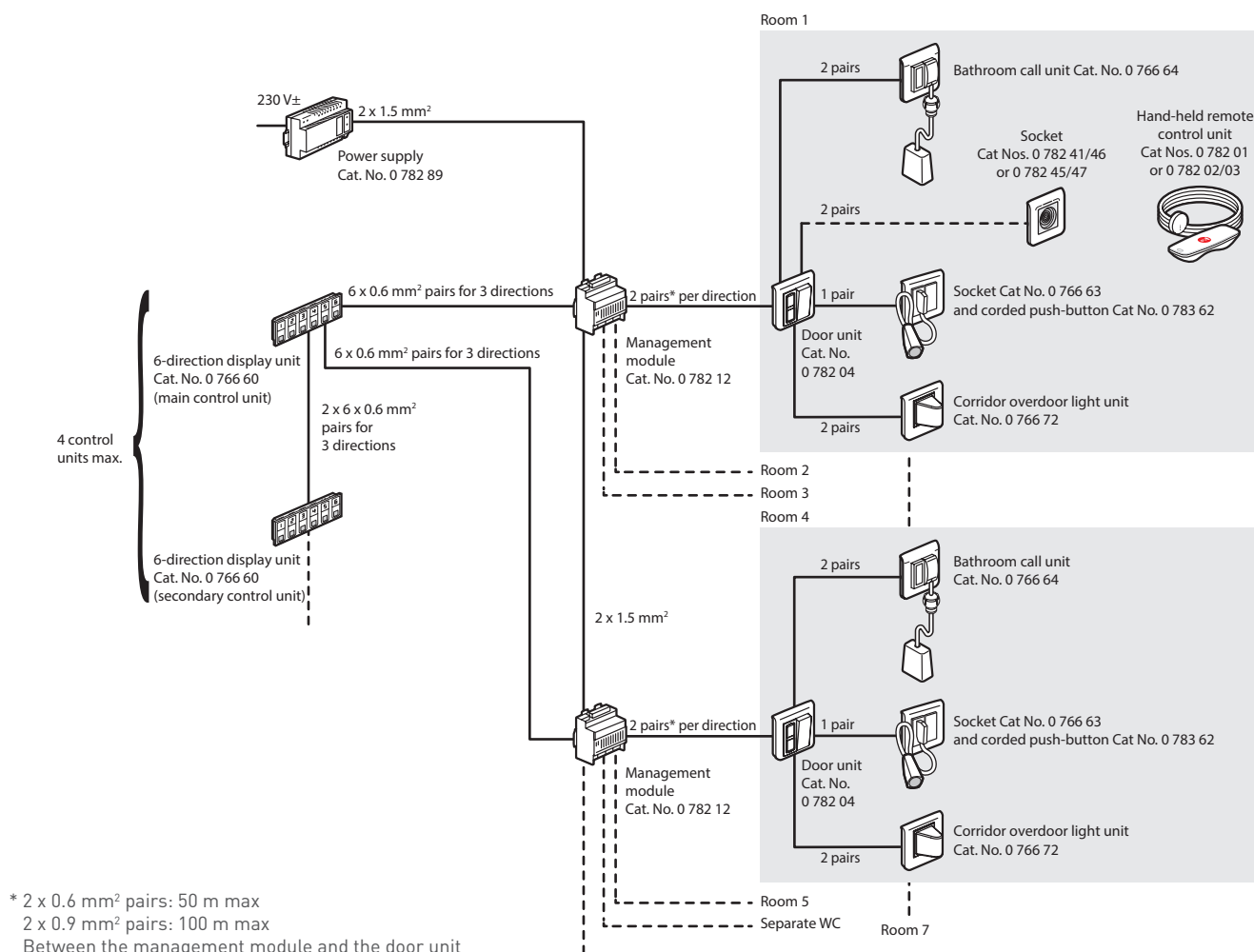
A single protection device should be installed for the entire nurse call system.

To ensure continuous operation during a mains failure, connect the system to an uninterruptible power supply (generator set and/or inverter). If there is a mains failure longer than 1 s, all calls prior to the outage may be lost.

Note: The Mosaic nurse call system is recommended for installations with 1 to 72 directions*.

* Direction: room from which the calls originate

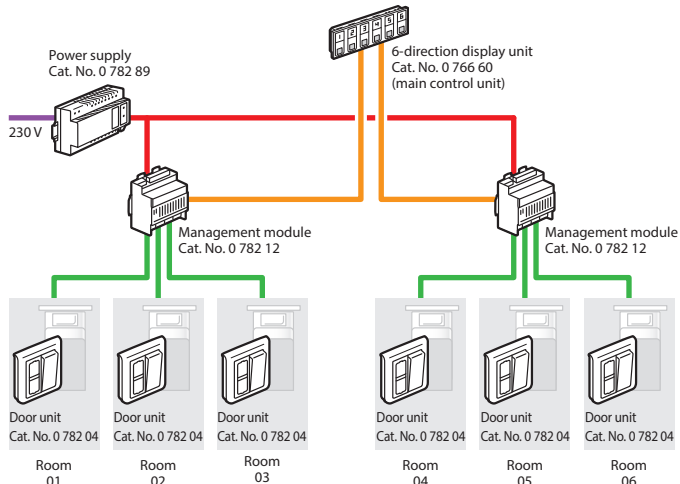
Wiring principle



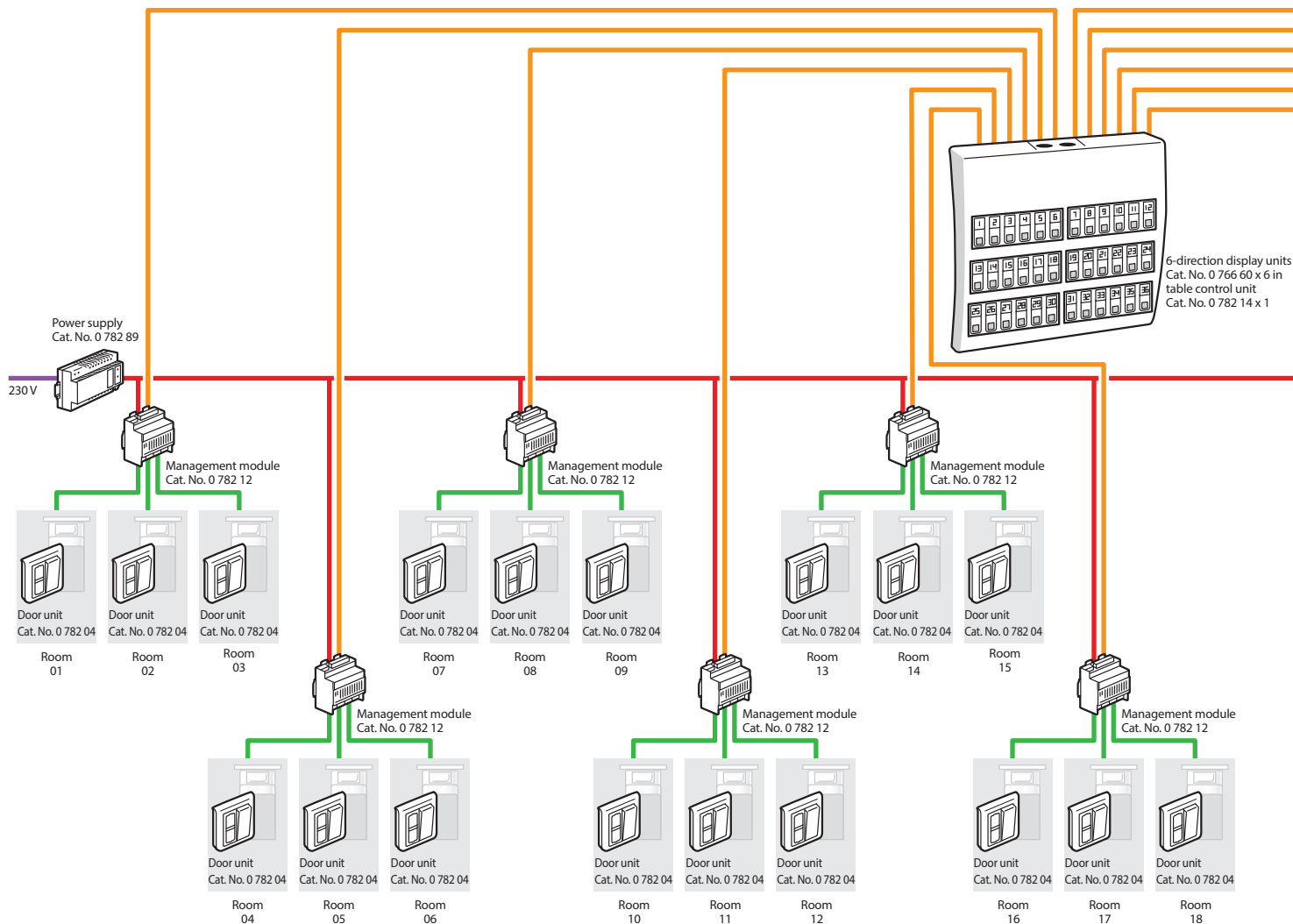
DESCRIPTION OF THE SYSTEM ARCHITECTURE

INSTALLATION PRINCIPLE FOR A WARD

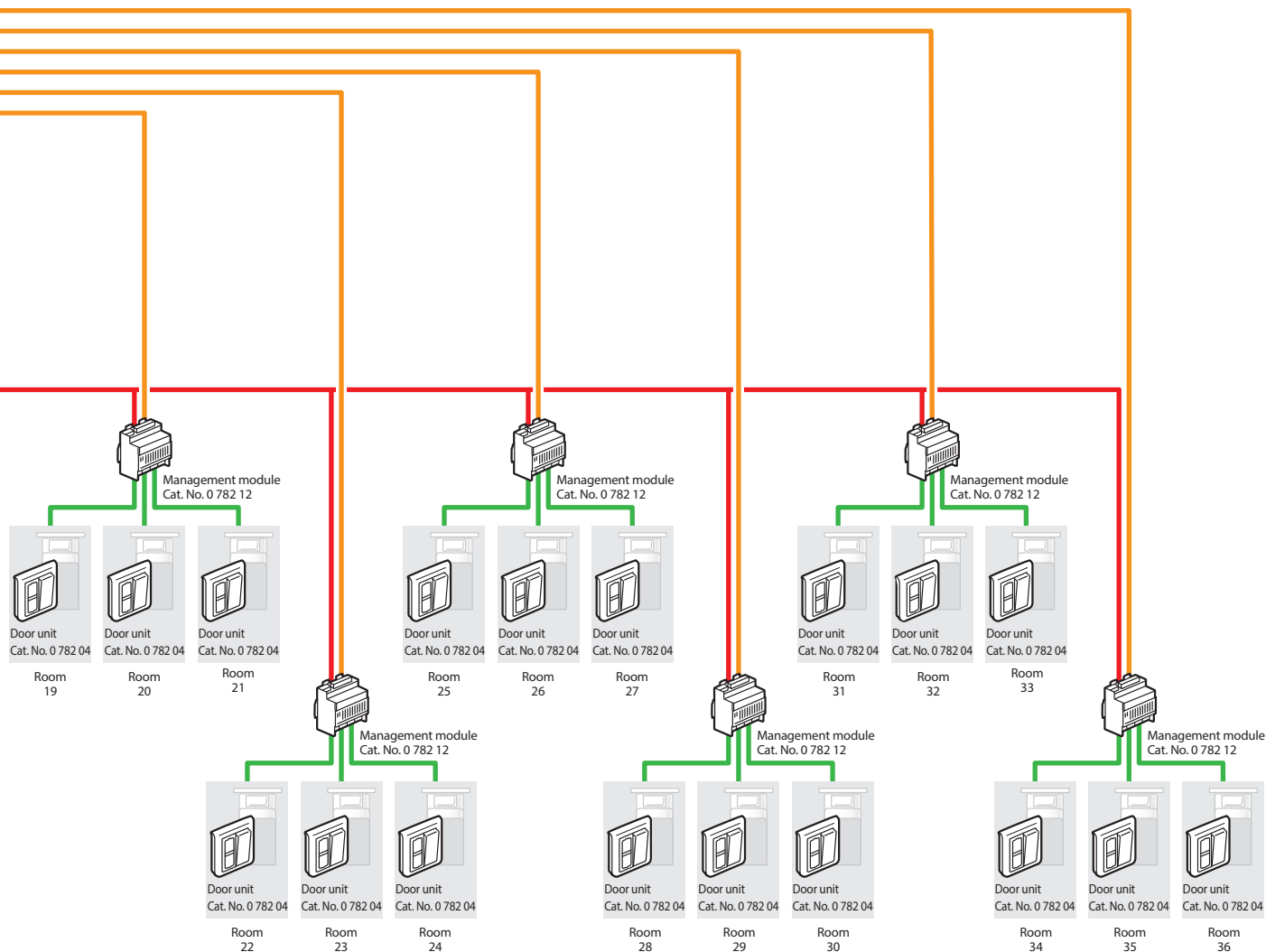
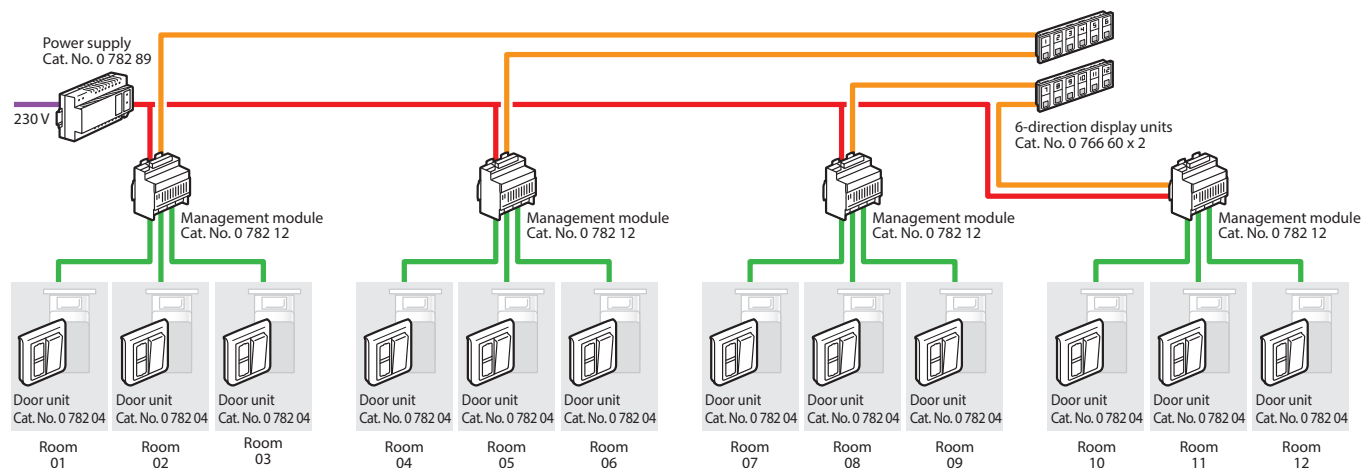
6-room ward



36-room ward



12-room ward



6 x 0.6 mm² pairs (50 m max) or 6 x 0.9 mm² pairs (100 m max)

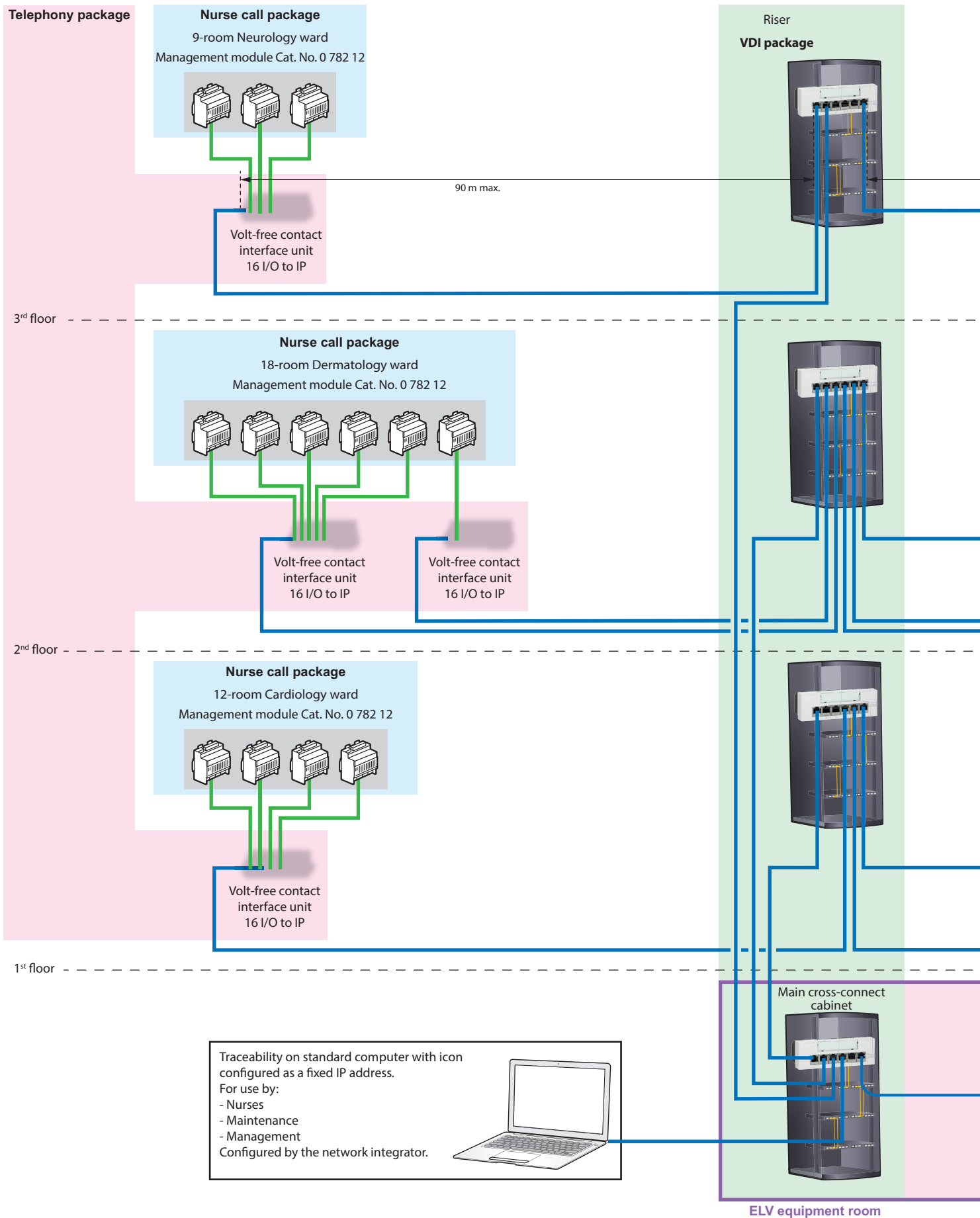
2 x 0.6 mm² pairs (50 m max) or 2 x 0.9 mm² pairs (100 m max)

2G 1.5 mm²

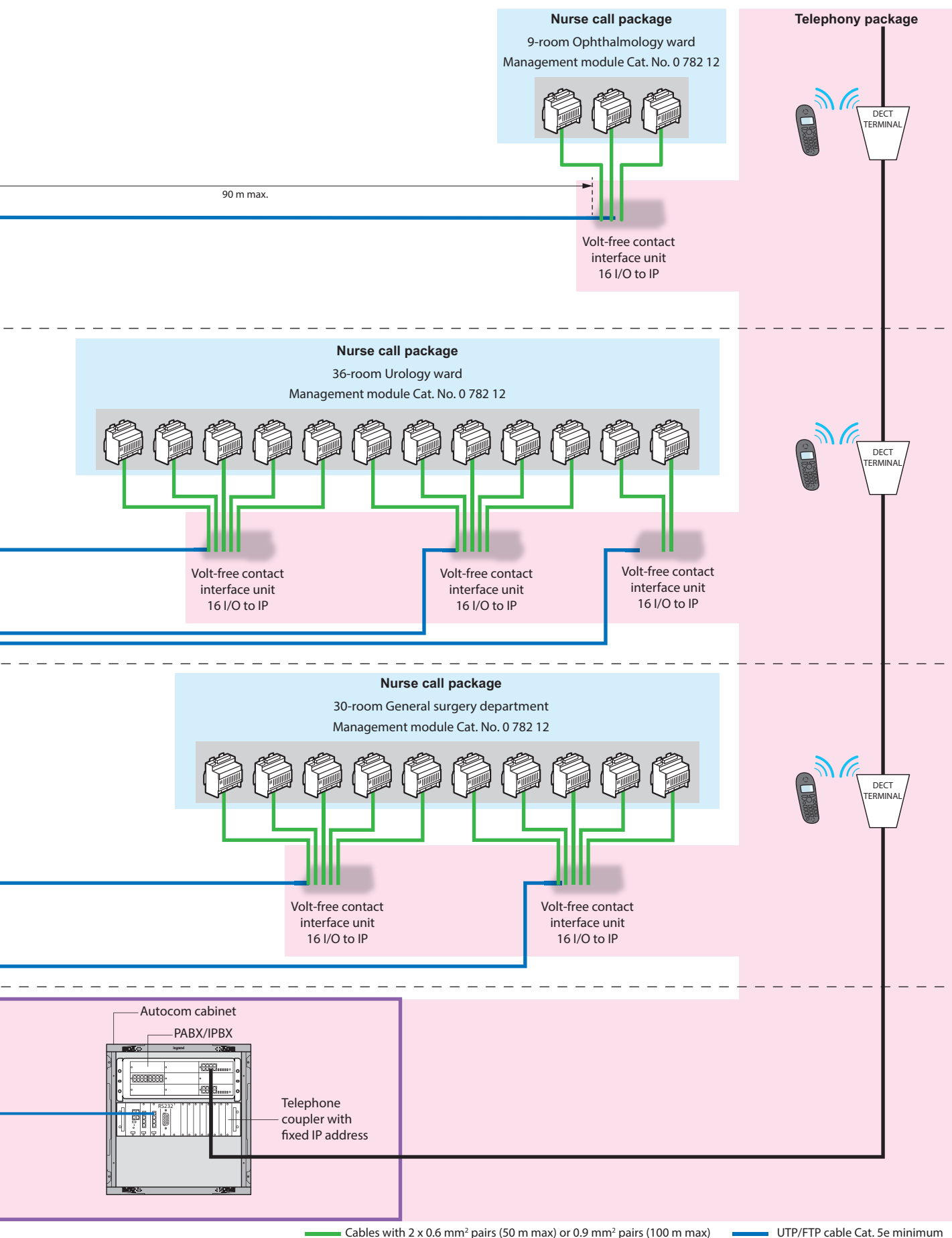
2G 1.5 mm²

DESCRIPTION OF THE SYSTEM ARCHITECTURE

INSTALLATION PRINCIPLE WITH CALL-FORWARDING OVER DECT AND TRACEABILITY ON TELEPHONE COUPLING PRODUCT

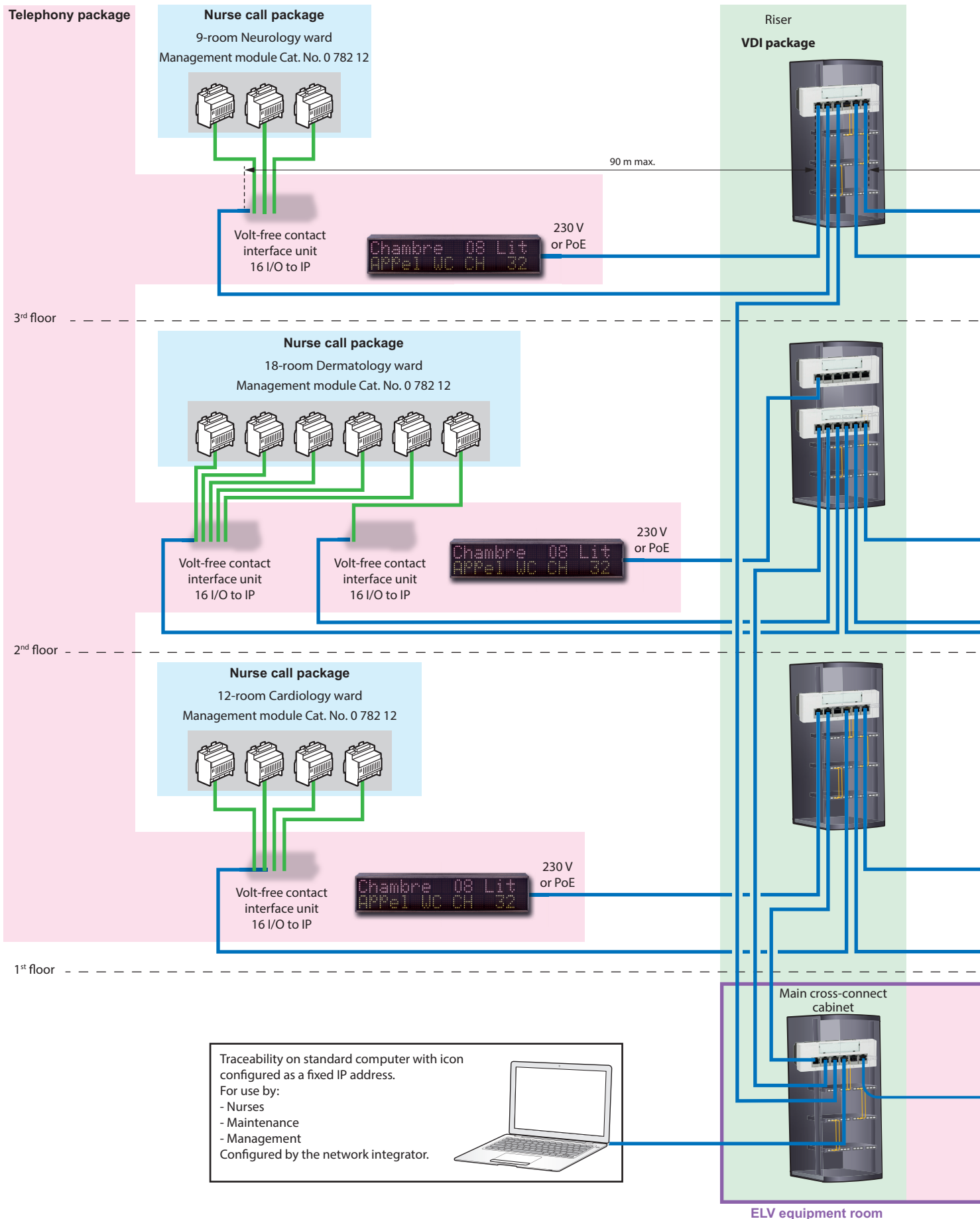


(TELEPHONY PACKAGE NOT SUPPLIED BY LEGRAND)

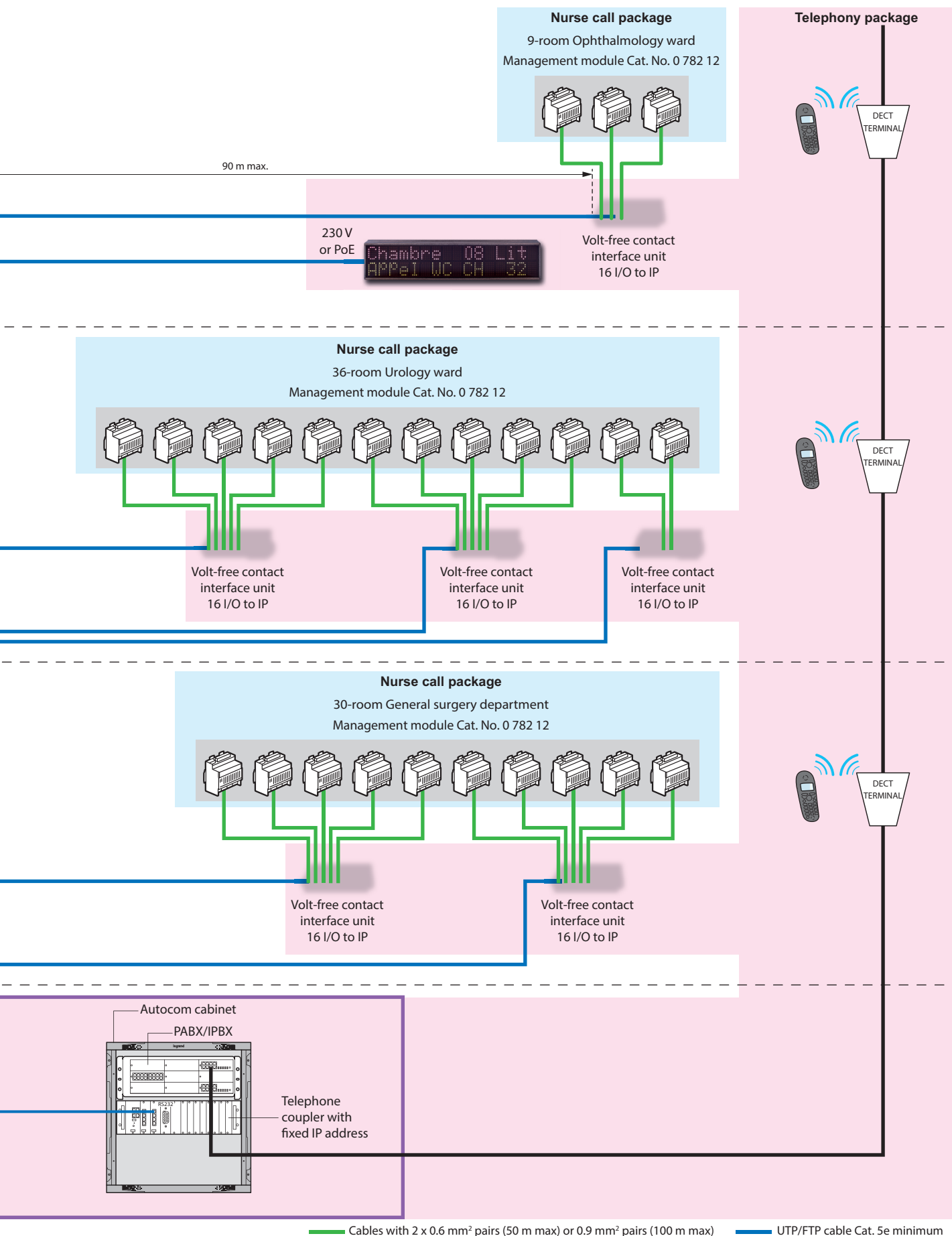


DESCRIPTION OF THE SYSTEM ARCHITECTURE

INSTALLATION PRINCIPLE WITH CALL-FORWARDING OVER DECT AND TRACEABILITY ON TELEPHONE COUPLING



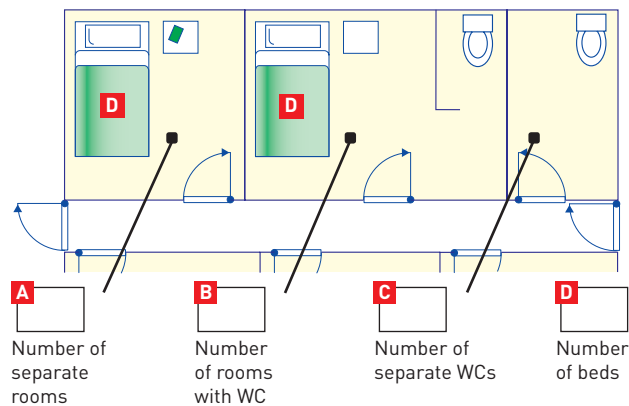
PRODUCT AND CORRIDOR DISPLAY UNITS (TELEPHONY PACKAGE NOT SUPPLIED BY LEGRAND)



DESCRIPTION OF THE SYSTEM ARCHITECTURE

SELECTION GUIDE: HOW TO DRAW UP YOUR LIST OF EQUIPMENT

1 Gather the following information



2 Calculate the number of directions

To determine the number of directions, simply add:

$$A + B + C = E$$

3 Draw up your list of equipment

Nurses' station and management equipment

- Display unit Cat. No. 0 766 60 = **E**/6 or display units
 Management module
 Cat. No. 0 782 12 = **E**/3 or modules
 Option:
 Table control unit
 Cat. No. 0 782 14 = **E**/36 or control units

Corridor equipment

- Corridor overdoor light units
 Cat. No. 0 766 72 = **E** or overdoor lights

Room/bathroom equipment

- Door unit Cat. No. 0 782 04 = **E** or door units
 Bathroom call unit
 Cat. No. 0 766 64 = **B** + **C** or call units

Bed equipment

- Socket for corded push-button
 Cat. No. 0 766 63 = **D** or sockets
 Corded push-button
 Cat. No. 0 783 62 = **D** or corded buttons
 OR
 Magnetic socket Cat. No. 0 782 46 = **D** or sockets
 Hand-held remote control unit
 for call only Cat. No. 0 782 01 = **D** or hand-held
 remote
 control units

Bed equipment (continued)

- OR
 Magnetic socket Cat. No. 0 782 47 = **D** or sockets
 Hand-held remote control unit for
 call only Cat. Nos. 0 782 02/03 = **D** or hand-held
 remote
 control units
 Option:
 Shunt plug for biomedical
 alarm Cat. No. 0 782 07 = **D** or plugs
 Socket for biomedical alarm
 Cat. No. 0 771 50 = **D** or sockets

Power supply:

Power supply Cat. No. 0 782 89

Number of power supplies to be calculated using the table below

0 782 04	0 766 72	0 766 64	0 782 01/ 02/03	0 782 12	0 766 60
0.7 W	0.9 W	0.7 W	0.8 W	1 W	0.4 W per direction

Recommendation: 1 power supply for 36 directions (corresponds to 30% of simultaneous calls max.)

PRESENTATION AND INSTALLATION OF DEVICES



Identification labels supplied

0 766 60: 6-DIRECTION* CALL DISPLAY UNIT

Performs the main and secondary display functions.

Main display unit: used to monitor rooms in the ward from the nurses' station.

Secondary display unit: used to transfer information from the main display unit. 4 secondary display units max.

Indicates calls by lighting up numbered indicator lights and generating an audible signal.

Can indicate several calls simultaneously.

Displays the call and nurse presence and mute setting.

Calls can be transferred to 4 other display units (treatment room, rest area, etc).

Supplied without plate.

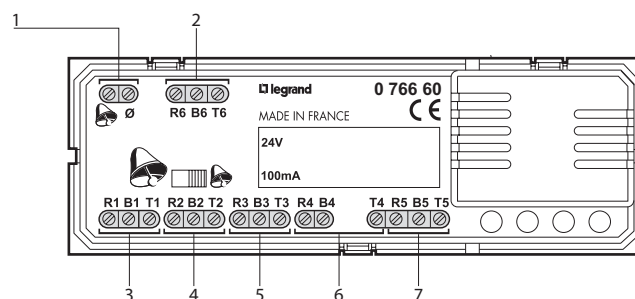
Supplied with sheets of numbered stickers from 1 to 99.

Technical characteristics

- Power supply: 24 V_{DC}
- Consumption: min. 0.4 W - max. 2.8 W
- Operating temperature: 5 to 40°C
- Storage temperature: -20 to 70°C
- Protection index: IP 40
- Dimensions: 135 x 22.5 mm
- Installation:
 - On table control unit Cat. No. 0 782 14
 - Flush-mounted in box depth 50 mm Cat. No. 0 800 53
 - Surface-mounted in box depth 40 mm Cat. No. 0 802 86
- Sound level:
 - 65 dB (A) at 1 m placed on table
 - 75 dB (A) fixed to wall 1.60 m off the floor
 - 62 dB (A) at 1 m placed on table
 - 72 dB (A) fixed to wall 1.60 m off the floor

* Direction: room from which the calls originate

Connection

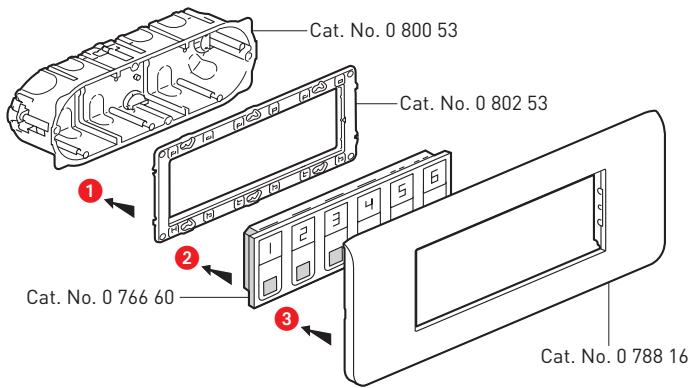


- 1- Management module terminals
- 2- Room 6 terminals
- 3- Room 1 terminals
- 4- Room 2 terminals
- 5- Room 3 terminals
- 6- Room 4 terminals
- 7- Room 5 terminals

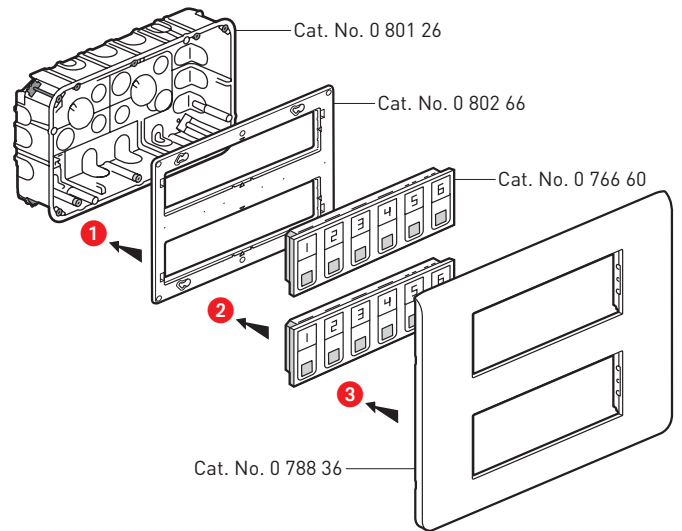
PRESENTATION AND INSTALLATION OF DEVICES

0 766 60: 6-DIRECTION* CALL DISPLAY UNIT (CONTINUED)

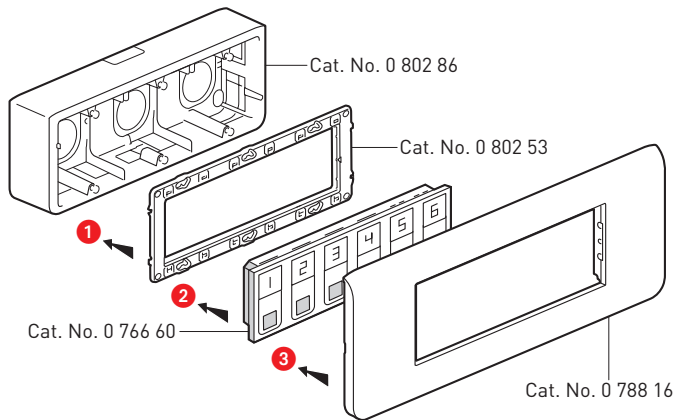
Flush-mounted wall installation



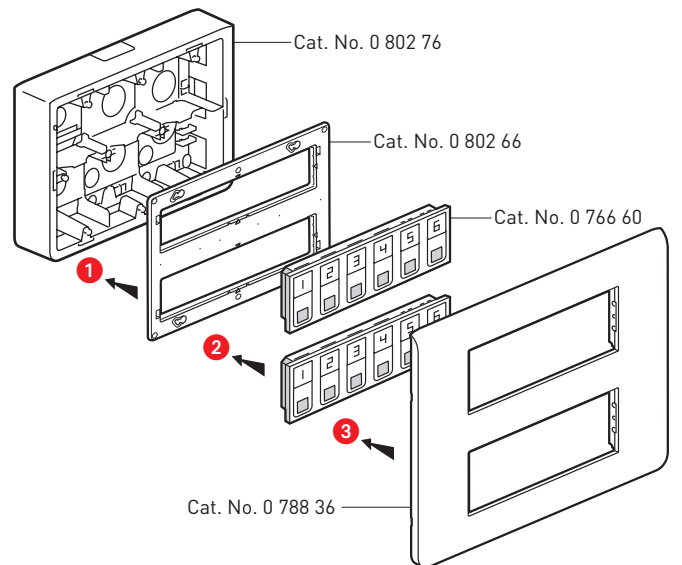
Flush-mounted 2-gang wall installation



Surface-mounted wall installation



Surface-mounted 2-gang wall installation



* Direction: room from which the calls originate



0 782 12: 3-DIRECTION MANAGEMENT MODULE*

Manages 3 directions.

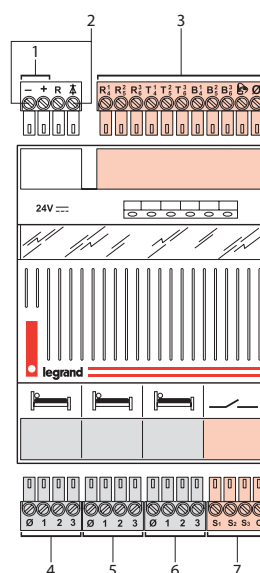
Option of forwarding:

- for indicator
- for buzzer via a solid state relay
- to DECT, via a telephone coupling product
- to master indicator (lights up if the indicator on at least one of the 3 directions is lit up).

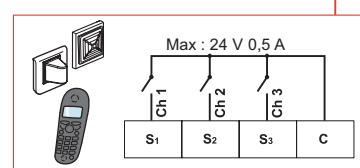
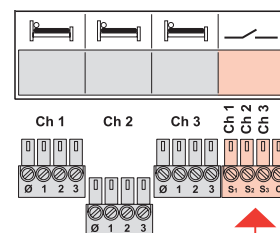
Technical characteristics

- Power supply: 24 V_{DC}
- Consumption (min): 39 mA
(max): 300 mA
- Operating temperature: 5 to 40°C
- Storage temperature: -20 to 70°C
- Size: 4 DIN modules

Connection



- 1- 24 V_{DC} power supply terminals
- 2- Master indicator or solid state relay terminals
- 3- Call display unit terminals
- 4- Door unit direction 1
- 5- Door unit direction 2
- 6- Door unit direction 3
- 7- Volt-free contact for DECT call forwarding or indicator or buzzer



- Contact beat frequency
- Normal call (0.5 Hz)



Emergency call (1 Hz)



* Direction: room from which the calls originate

PRESENTATION AND INSTALLATION OF DEVICES



0 782 14: TABLE CONTROL UNIT

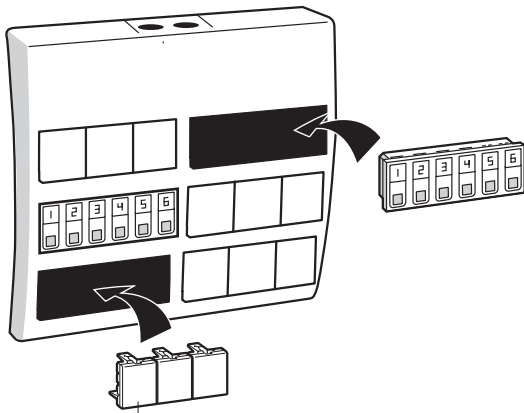
Support frame which can take up to 6 display units
Cat. No. 0 766 60.

Makes it easier to run cables when installing several display units.
Fit blanking plates over unused positions.

Technical characteristics

- Protection index: IP 40 with blanking plates
- Dimensions: 310 x 295 x 75 mm (36 modules)

Installation



Cat. No. 0 770 71



0 782 89/0 035 67 OR E49: POWER SUPPLIES

Cat. No. 0 782 09: Powers the system with SELV.
Recommendation: 1 power supply for 36 directions (corresponds to 30% of simultaneous calls max.).

Technical characteristics

- Supply voltage: 230 V \sim \pm 10% - 50/60 Hz
- Output voltage: 24 V \equiv
- Max. current: 2 A
- Max. power: 48 W
- Operating temperature: 5 to 40°C
- Storage temperature: -20 to 70°C
- Protection index: IP 30
- Size: 6 DIN modules

Cat. No. 0 035 67 or E49: Powers the solid state relay for information transfer (indicator or buzzer).

Technical characteristics

- Supply voltage: 230 VA
- BUS output voltage: 27 V \equiv
- Max. BUS current: 600 mA
- Max. power: 21.5 W
- Max. consumption: 26.8 W
- Operating temperature: 5 to 40°C
- Storage temperature: -20 to 70°C
- Protection index: IP 20
- Size: 2 DIN modules



0 782 04: DOOR UNIT

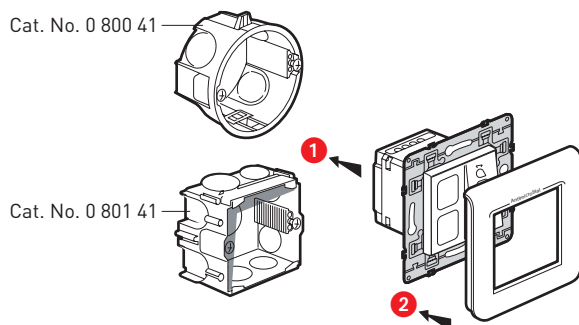
Consisting of 2 white indicators to be covered with stickers (red, green, orange or blue) and a push-button for acknowledging the call and nurse presence.

Recommendation: Place the red sticker over the call indicator (top indicator).

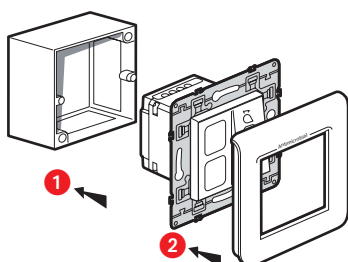
Technical characteristics

- Power supply: via management module Cat. No. 0 782 12
- Operating temperature: 5 to 40°C
- Storage temperature: -20 to 70°C
- Antimicrobial
- Protection index: IP 20
- Dimensions (H x W x D): 82 x 82 x 43 mm
- Installation:
 - in 1-gang (2 modules) flush-mounting box Cat. No. 0 800 41 or Cat. No. 0 801 41 (concrete)
 - in surface-mounting box Cat. No. 0 802 81 (IP 20)
- LED indicators with resistor in parallel:
 - Impedance: 1 kΩ
 - DC voltage: 9 to 31 V

Flush-mounted wall installation



Surface-mounted wall installation

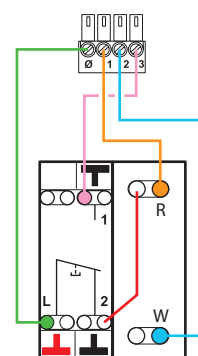


Connection (from 15W22)

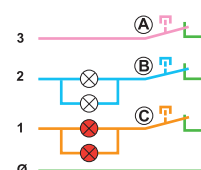
Management module
Cat. No. 0 782 12



Door unit
Cat. No. 0 782 04

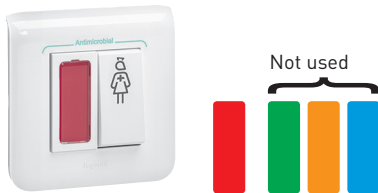


R - Red LED indicator
W - White LED indicator



Ⓐ - Bathroom or biomedical pull cord
Ⓑ - Corded push-button or hand-held remote control
Ⓒ - Door unit

PRESENTATION AND INSTALLATION OF DEVICES



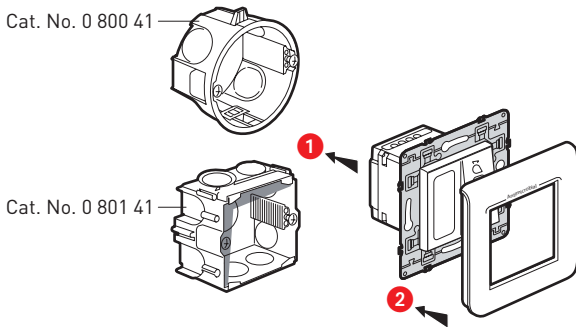
0 766 85: BATHROOM CALL UNITS OR CALL BUTTON

Technical characteristics

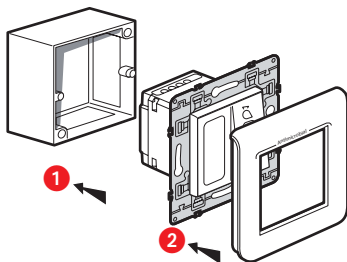
- Power supply: via management module Cat. No. 0 782 12
- Operating temperature: 5 to 40°C
- Storage temperature: -20 to 70°C
- Antimicrobial
- Protection index: IP 20
- Dimensions (H x W x D): 82 x 82 x 43 mm
- Installation:
 - in 1-gang (2 modules) flush-mounting box Cat. No. 0 800 41 or Cat. No. 0 801 41 (concrete)
 - in surface-mounting box Cat. No. 0 802 81 (IP 20)

Recommendation: Place the red sticker over the call indicator (top indicator).

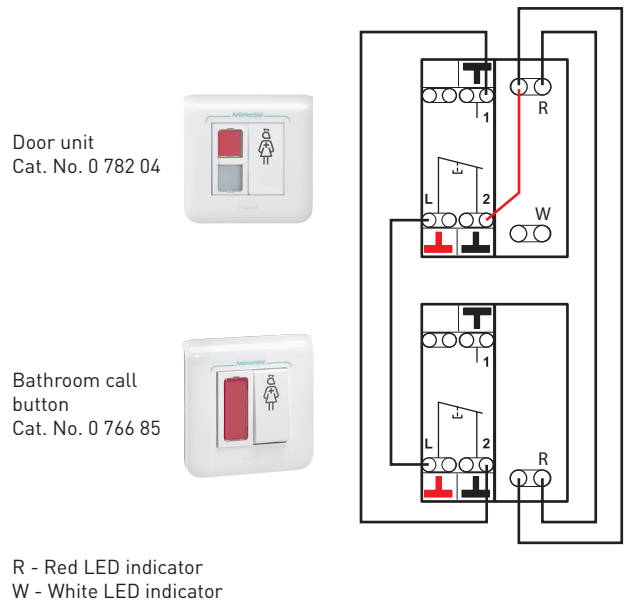
Flush-mounted wall installation



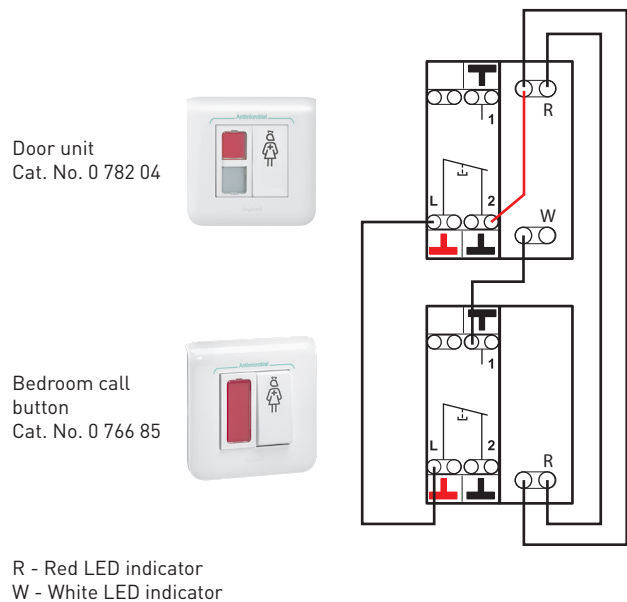
Surface-mounted wall installation



Bathroom call button connection (from 15W22)



Bedroom call button connection (from 15W22)





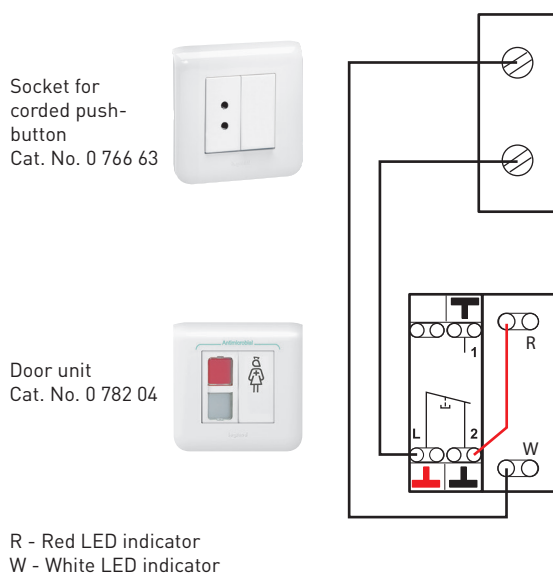
0 766 63: SOCKET FOR CORDED PUSH-BUTTON

Socket for corded push-button or biomedical alarm.
Supplied on 2-module plate with blanking plate.

Technical characteristics

- Power supply: via management module Cat. No. 0 782 12
- Operating temperature: 5 to 40°C
- Storage temperature: -20 to 70°C
- Protection index: IP 20
- Dimensions: 82 x 82 x 36 mm
- Installation:
 - in 1-gang (2 modules) flush-mounting box Cat. No. 0 800 41 or Cat. No. 0 801 41 (concrete)
 - on the wall with surface-mounting box Cat. No. 0 802 81
- 12 mm fixing centres

Connection



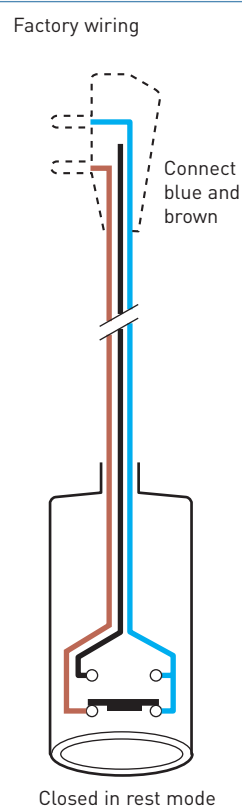
0 783 62: CORDED PUSH-BUTTON

Allows patients to call a nurse via the door unit.
For use in conjunction with socket Cat. No. 0 766 63.
With 12 mm fixing centre plug for 2P socket Cat. No. 0 771 50.

Technical characteristics

- Power supply: via socket for corded push-button
- Operating temperature: 5 to 40°C
- Storage temperature: -20 to 70°C
- Protection index: IP 20
- Cord length: 2 m
- Ejectable from 45° angle
- Factory-fitted NC contact.
NO contact possible by replacing the brown wire in the plug with the black wire.

Conductor marking



PRESENTATION AND INSTALLATION OF DEVICES



0 782 41/46: SOCKETS FOR HAND-HELD REMOTE CONTROL UNITS

Sockets Cat. No. 0 782 41 for mounting in a strip and 0 782 46 for call-only hand-held remote control unit.

Magnetic connection between hand-held unit and socket: can be ejected in any direction with pull-out force designed to avoid any damage to the equipment.

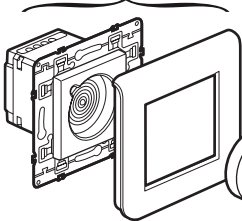
Antimicrobial.

Non-indexed magnetic connection socket for hand-held remote control unit Cat. No. 0 782 01.

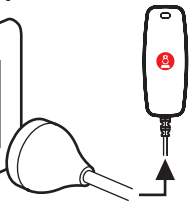
0 782 41



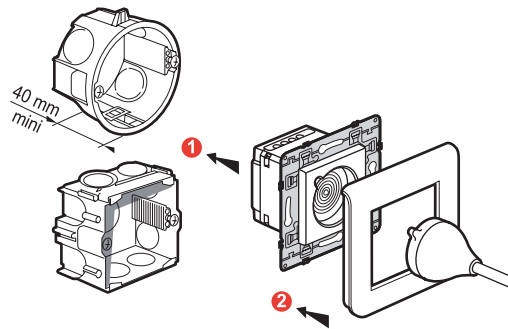
0 782 46



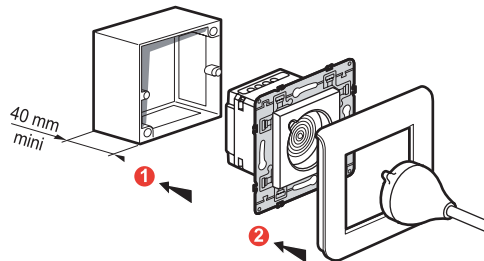
0 782 01



• Flush-mounted wall installation with 1-gang flush-mounting box



• Surface-mounted wall installation with box Cat. No. 0 802 81

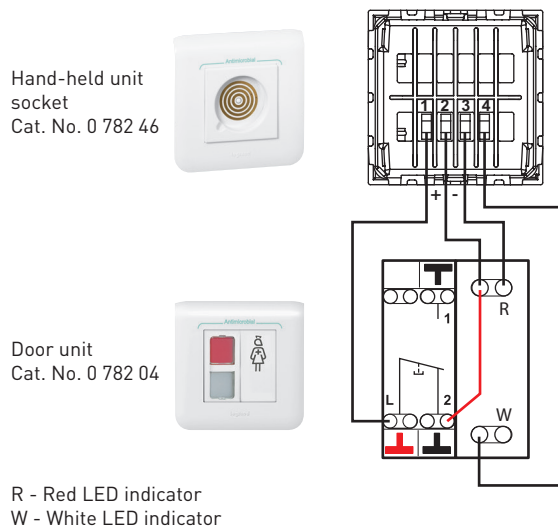


Technical characteristics

- Power supply: via the door unit
- Operating temperature: 5 to 40°C
- Storage temperature: -20 to 70°C
- Antimicrobial
- Protection index: IP 40
- Dimensions:
 - Cat. No. 0 782 41: 45 x 45 x 36 mm
 - Cat. No. 0 782 46: 82 x 82 x 36 mm
- Installation:
 - in 1-gang flush-mounting box (2 modules)
 - on wall with surface-mounting box Cat. No. 0 802 81
 - in a strip using special holder supplied

• Connection

Example: 1 bed in a room.





0 782 45/47: SOCKETS FOR HAND-HELD REMOTE CONTROL UNITS

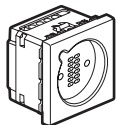
Sockets Cat. Nos. 0 782 45 and 0 782 47 for hand-held remote control units for calls and controls.

Magnetic connection between hand-held unit and socket: can be ejected in any direction with pull-out force designed to avoid any damage to the equipment.

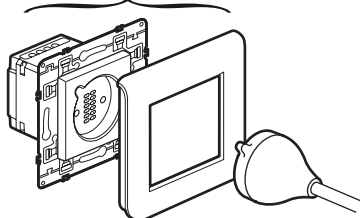
Antimicrobial.

Indexed magnetic connection socket for hand-held remote control unit Cat. Nos. 0 782 02 and 782 03.

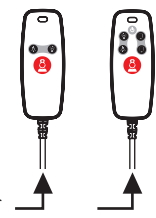
0 782 45



0 782 47



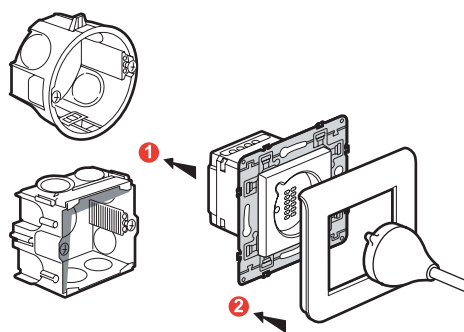
0 782 02 0 782 03



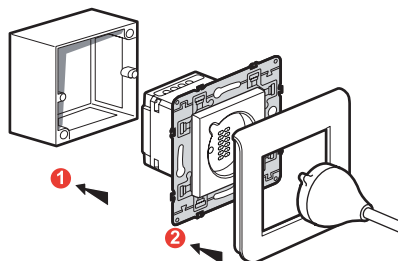
Technical characteristics

- Power supply:
 - via the door unit for nurse calls
 - via remote control module Cat. No. 0 783 77 or 0 783 78 or 0 783 79 for lighting and roller blinds
- Operating temperature: 5 to 40°C
- Storage temperature: -20 to 70°C
- Antimicrobial
- Protection index: IP 40
- Dimensions:
 - Cat. No. 0 782 45: 45 x 45 x 36 mm
 - Cat. No. 0 782 47: 82 x 82 x 36 mm
- Installation:
 - in 1-gang flush-mounting box (2 modules)
 - on wall with surface-mounting box Cat. No. 0 802 81

Flush-mounted wall installation with 1-gang flush-mounting box



Surface-mounted wall installation with box Cat. No. 0 802 81



Connection

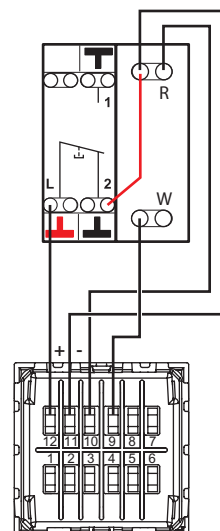
Example: 1 bed in a room.

Door unit
Cat. No. 0 782 04



R - Red LED indicator
W - White LED indicator

Hand-held unit
socket
Cat. No. 0 782 47



PRESENTATION AND INSTALLATION OF DEVICES



0 782 01/02/03: HAND-HELD REMOTE CONTROL UNITS

Allow patients to call a nurse (using an NC push-button with call confirmation indicator) via the door unit.

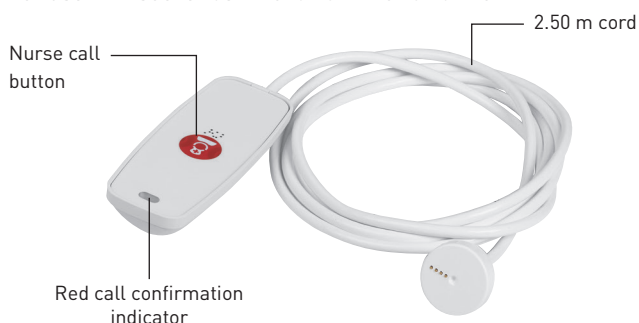
Magnetic connection between hand-held units and sockets: can be ejected in any direction with pull-out force designed to avoid any damage to the equipment.

These products are compatible with other nurse call systems with an NC (Normally Closed) contact on 2 terminals and LED call confirmation indicator on 2 terminals.

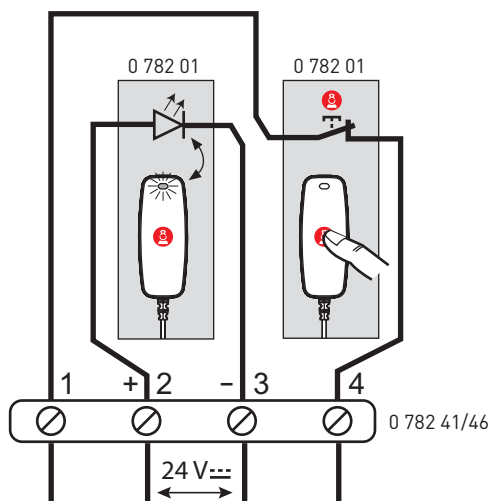
Recommended cleaning: use wipes impregnated with detergent for food contact surfaces (Dettol, etc).

Hand-held remote control unit for call only (corded push-button) Cat. No. 0 782 01

For use with socket Cat. No. 0 782 41 or 0 782 46.

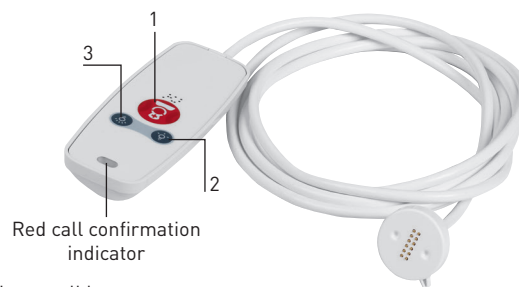


Connection



Hand-held remote control unit for calls and controls Cat. No. 0 782 02

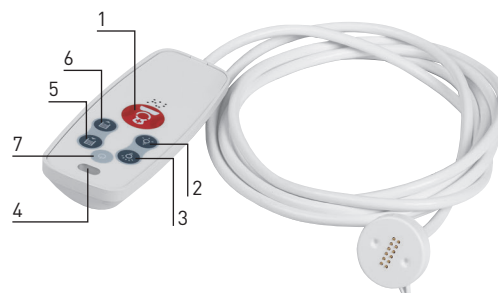
For use with socket Cat. No. 0 782 45 or 0 782 47.



- 1- Nurse call button
- 2- Reading light control (NO push-button)
- 3- Room lighting control (NO push-button)

Hand-held remote control unit for calls and controls Cat. No. 0 782 03

For use with socket Cat. No. 0 782 45 or 0 782 47.



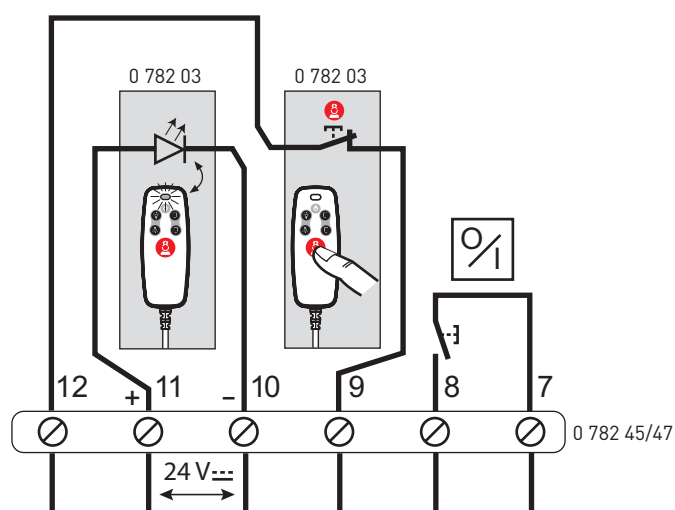
- 1- Nurse call button
- 2- Reading light control (NO push-button)
- 3- Room lighting control (NO push-button)
- 4- Red call confirmation indicator
- 5 and 6- Roller blind control (NO push-button)
- 7- Free function button (NO push-button)



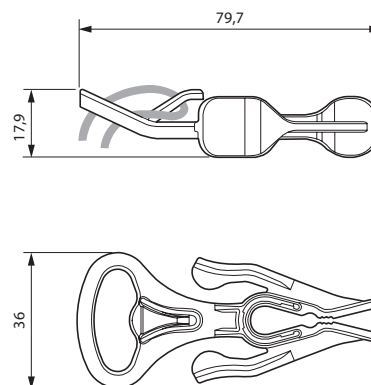
0 782 43: CLAMP FOR CORDED PUSH-BUTTON

For holding the corded push-button within reach: on bedding, clothes or the arm of a chair.

Connection



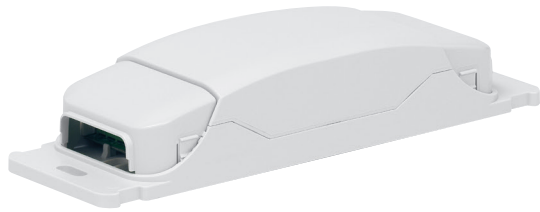
Overall dimensions



Technical characteristics

- Power supply: via sockets for hand-held remote control units
- Operating temperature: 5 to 40°C
- Storage temperature: -20 to 70°C
- Antimicrobial
- Protection index: IP 67 (without plug)
- Cord length: 2.5 m
- Can be fixed or held in place with clamp Cat. No. 0 782 43
- LED indicators with resistor in parallel:
 - Impedance: 12.45 kΩ
 - DC voltage: 9 to 31 V

PRESENTATION AND INSTALLATION OF DEVICES



0 783 77/78/79: REMOTE CONTROL MODULES

These units are used to control SELV functions (lighting, roller blinds, and one additional function) via hand-held remote control units.

For mounting in suspended ceilings or in technical cabinets between the rooms.

This product must be used on a single phase.

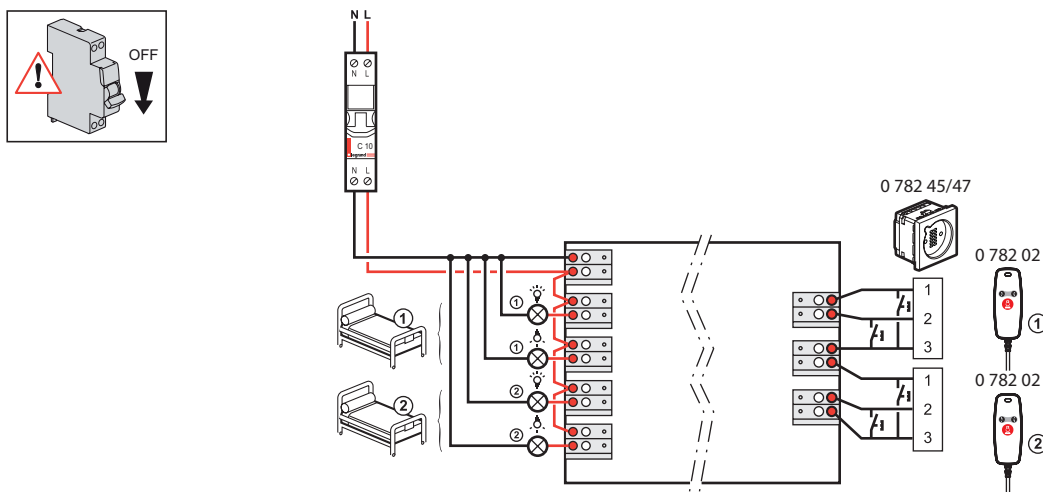
Technical characteristics

- Power supply: 100 - 240 V
- Operating temperature: 0 to 35°C
- Storage temperature: -20 to 70°C
- Dimensions: 230 x 71 x 44 mm
- Installation: in suspended ceiling or technical cabinet

230 V ~ 110 V ~	500 W 250 W	2 A	1000 W 500 W	4.3 A	500 VA 250 VA	2 A	500 VA 250 VA	2 A	500 VA 250 VA	2 A	500 VA 250 VA	2 A	1 x 500 VA 1 x 250 VA	2 A

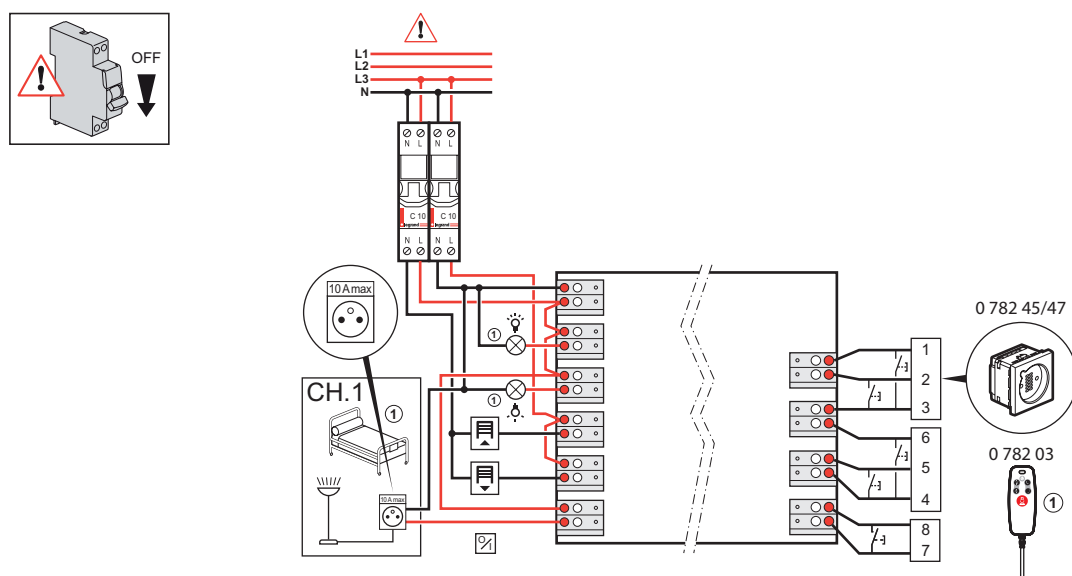
Remote control module for luminaires or bedhead strips for controlling 4 lighting outputs Cat. No. 0 783 77

Compatible with hand-held remote control unit Cat. No. 0 782 02.



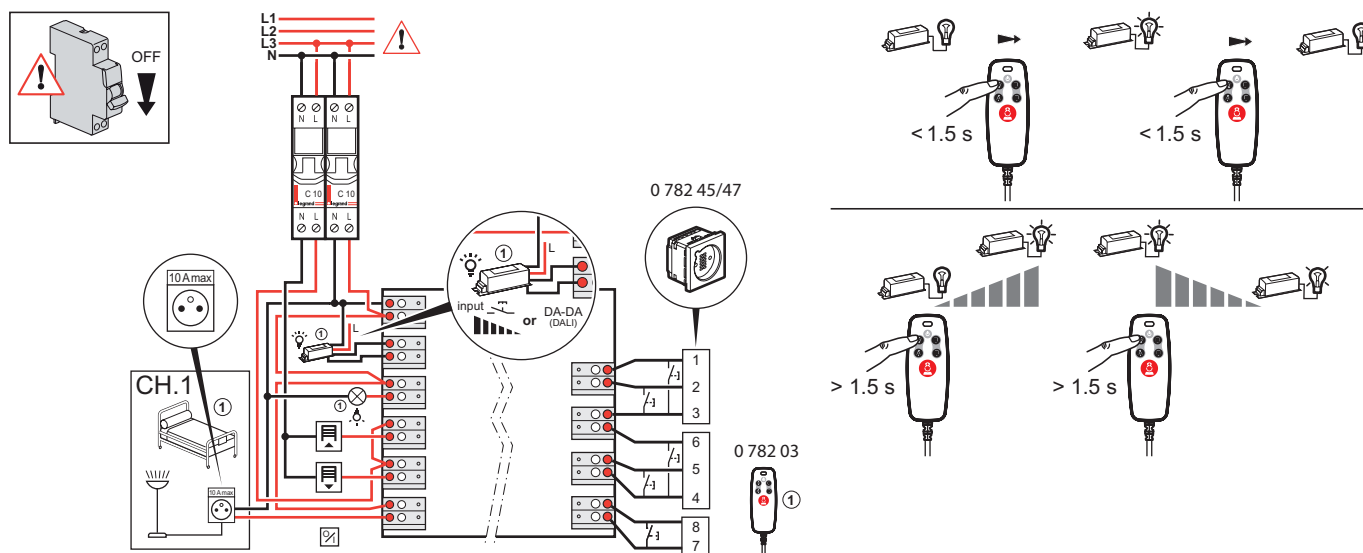
Remote control module for luminaires or bedhead strips for controlling 2 lighting outputs and roller blinds with mechanical stop Cat. No. 0 783 78

Compatible with hand-held remote control unit Cat. No. 0 782 03.

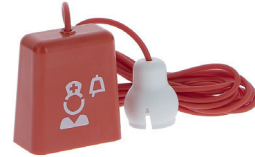


Remote control module for roller blinds and for luminaires or bedhead strips for controlling 2 lighting outputs: room lighting dimmer, reading light ON/OFF and roller blinds Cat. No. 0 783 79

Compatible with hand-held remote control unit Cat. No. 0 782 03.



PRESENTATION AND INSTALLATION OF DEVICES



0 766 64: BATHROOM CALL PULL-CORD (18W10)

Bathroom call unit with vertical pull-cord button and integrated LED indicator.

Technical characteristics

- Power supply: via door unit Cat. No. 0 782 04
- Consumption: 0.8 W
- Operating temperature: 5 to 40°C
- Storage temperature: -20 to 70°C
- Protection index: IP 20
- Dimensions: 82 x 82 x 43 mm
- Installation:
 - surface-mounted with box Cat. No. 0 802 81
 - flush-mounted in 1-gang (2 modules) flush-mounting box depth 40 mm Cat No. 0 819 41 or 0 801 41
- Antibacterial

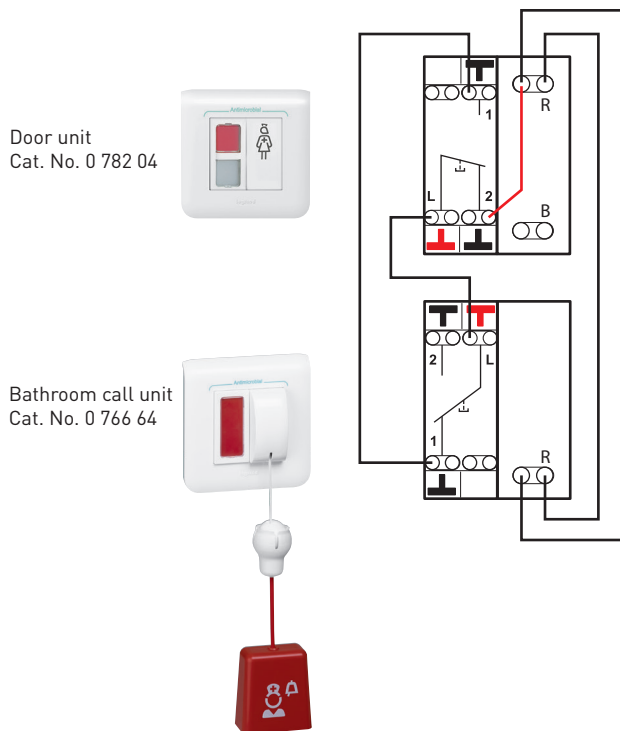
9 804 12: SPARE PART FOR BATHROOM CALL PULL-CORD

Spare cord in case one breaks or is lost.

Technical characteristics

- Antibacterial
- Length 1.5 m

Connection



R - Red LED indicator
W - White LED indicator



0 766 72: DOUBLE DISPLAY CORRIDOR OVERDOOR LIGHT UNIT

Double indicator (red/white).

Displays calls and nurse presence in the corridor.

With long-life LEDs.

Caution: only this catalogue number is compatible with the Mosaic system.

Technical characteristics

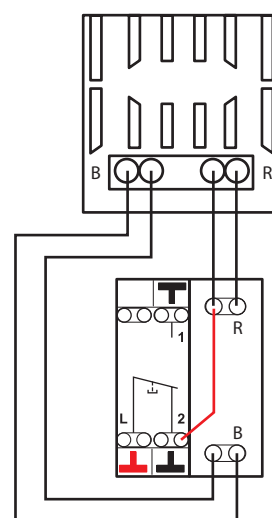
- Power supply: via door unit Cat. No. 0 782 04
- Consumption: 1.2 W
- Operating temperature: 5 to 40°C
- Storage temperature: -20 to 70°C
- Protection index: IP 20
- Dimensions: 82 x 82 x 43 mm
- Installation:
 - surface-mounted with box Cat. No. 0 802 81
 - flush-mounted in 1-gang (2 modules) flush-mounting box depth 40 mm Cat No. 0 819 41 or 0 801 41

Connection

Corridor overdoor light unit
Cat. No. 0 766 72



Door unit
Cat. No. 0 782 04



R - Red LED indicator
W - White LED indicator

PRESENTATION AND INSTALLATION OF DEVICES



0 766 71: CALL TRANSFER UNIT FOR CORRIDORS

Transfers calls from a ward into the corridor.

Technical characteristics

- Power supply: 27 V= (via indicator power supply)
- Operating temperature: 5 to 40°C
- Storage temperature: -20 to 70°C
- Protection index: IP 20
- Dimensions (H x W): 82 x 82 mm
- Installation:
 - in 1-gang flush-mounting box
 - surface-mounted with box Cat. No. 0 802 81



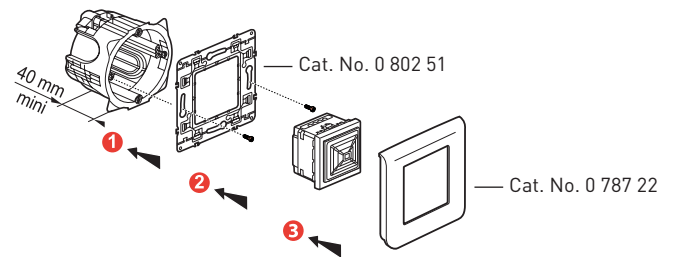
0 766 42: ELECTRONIC BUZZER

Audible call transfer from a ward.

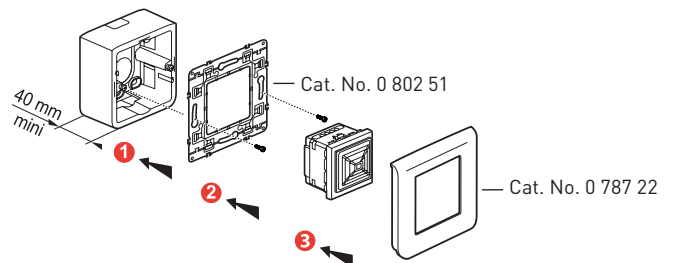
Technical characteristics

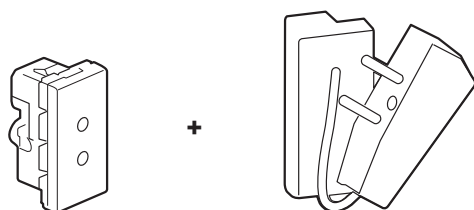
- Power supply: 27 V= (via power supply Cat. No. 0 035 67)
- Consumption: 9 mA
- Operating temperature: -10°C to +55°C
- Storage temperature: -20 to 70°C
- Protection index: IP 41-IK 05
- Sound level: 80 dB(A) at 1 m
- Overall dimensions (H x W): 45 x 45 mm

Flush-mounted wall installation in 1-gang screw flush-mounting box



Surface-mounted wall installation with box Cat. No. 0 802 81





0 771 50 + 0 782 07: BIOMEDICAL CALL PLUG AND SOCKET

Signals the end of a cycle via an alarm on the nurse call system. For connection to portable electrical medical devices such as syringe pumps, respirators, etc.

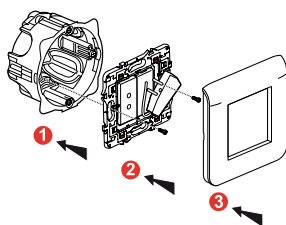
Comprises:

- Socket Cat. No. 0 771 50
- Shunt plug Cat. No. 0 782 07:
For biomedical alarm standby.
Used with socket Cat. No. 0 771 50.

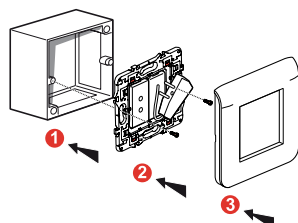
Technical characteristics

- Power supply: via door unit Cat. No. 0 782 04
- Operating temperature: 5 to 40°C
- Storage temperature: -20 to 70°C
- Protection index: IP 20
- Overall dimensions (H x W): 45 x 22.5 mm
- Installation:
 - in 1-gang flush-mounting box with universal Batibox support Cat. No. 0 802 51
 - surface-mounted with box Cat. No. 0 802 81 and universal Batibox support Cat. No. 0 802 51
 - can be installed in trunking, or in bedhead strips or trunking units

Flush-mounted wall installation in 1-gang flush-mounting box with support Cat. No. 0 802 51

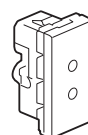


Flush-mounted wall installation in 1-gang flush-mounting box with support Cat. No. 0 802 51

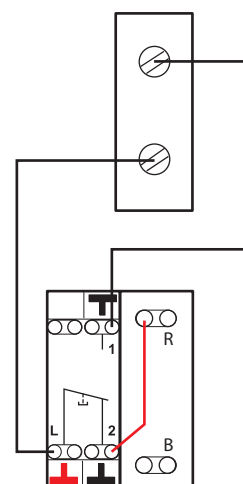


Biomedical socket connection (emergency call)

Biomedical socket
Cat. No. 0 771 50



Door unit
Cat. No. 0 782 04



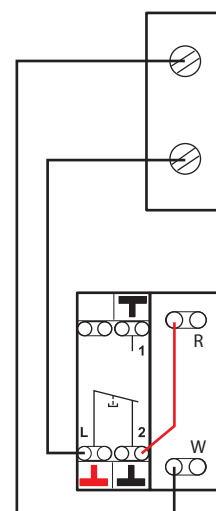
R - Red LED indicator
W - White LED indicator

Armchair socket connection (normal call)

Armchair socket
Cat. No. 0 771 50



Door unit
Cat. No. 0 782 04




R - Red LED indicator
W - White LED indicator

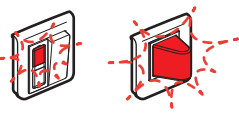
OPERATING MODE

CALL + NURSE PRESENT

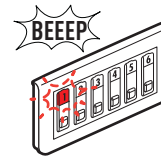
1 - Patient calls from room



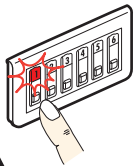
1 The patient calls from their room by pressing the corded push-button or hand-held remote control unit.



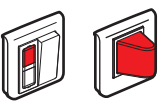
2 The door unit indicator and the corridor overdoor light flash red slowly.



In the nurses' station, the room number lights up red and flashes slowly, and the buzzer beeps slowly.

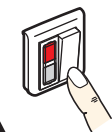


3 From the nurses' station, the nurse acknowledges the call by pressing the mute button. The red indicator changes from flashing to steady and the buzzer stops.

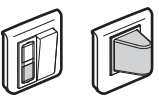


4 The door unit indicator and the corridor overdoor light change from flashing red to steady red.

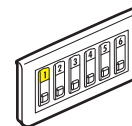
2 - Nurse present in the room



1 On entering the room, the nurse signals her presence by pressing the door unit push-button.

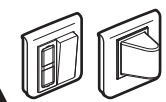


2 The red door unit indicator goes out and the white indicator lights up. The corridor overdoor light changes from red to white.



In the nurses' station, the red indicator goes out and the yellow indicator returns to steady state.

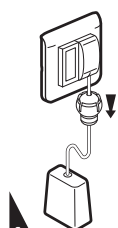
3 - Acknowledgement of the call



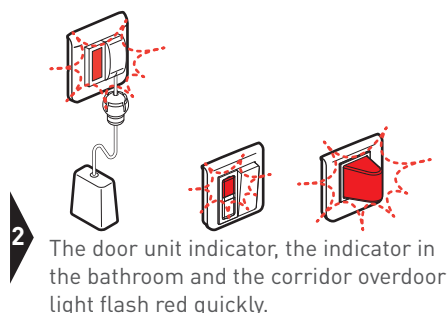
1 On leaving the room, the nurse presses the door unit push-button and clears the call. All the indicators and the overdoor light go out.

BATHROOM CALL + NURSE PRESENT

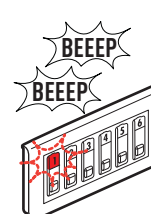
1 - Patient calls from bathroom



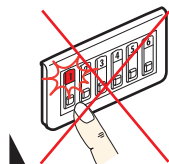
1 The patient calls from the bathroom by pulling the cord.



2 The door unit indicator, the indicator in the bathroom and the corridor overdoor light flash red quickly.

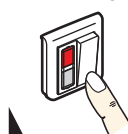


In the nurses' station, the room number is displayed, the indicator flashes red quickly and the buzzer beeps quickly.

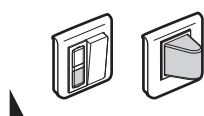


3 Muting is not possible from the nurses' station. The nurse must go to the patient's bathroom.

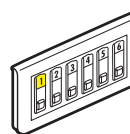
2 - Nurse present in the room



1 On entering the room, the nurse signals her presence by pressing the door unit push-button.



2 The door unit red indicator and the corridor overdoor light go out. The door unit indicator and the corridor overdoor light come on with a steady white light.



In the nurses' station, the red indicator goes out and the yellow indicator returns to steady state.

Since bathroom calls are priority calls, the nurse must go to the room. Muting is not possible.

3 - Acknowledgement of the call



1 On leaving the room, the nurse presses the door unit push-button and clears the call. All the indicators and the overdoor light go out.

OPERATING MODE

CALL FOR NURSE ASSISTANCE (EMERGENCY)

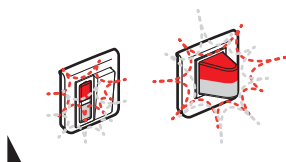
1 - Patient calls from room

2 - Nurse present in the room

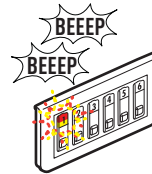
3 - Nurse assistance request



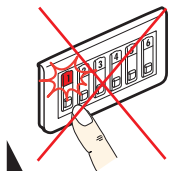
1 The patient calls from their room by pressing the corded push-button or hand-held remote control unit.



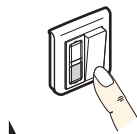
2 The door unit indicators and the corridor overdoor light flash quickly, alternating red and white.



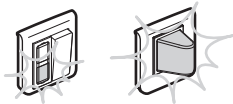
3 In the nurses' station, the indicator flashes quickly, alternating red and yellow; the buzzer beeps quickly.



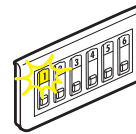
4 Muting is not possible from the nurses' station. The nurse must go to the patient's room.



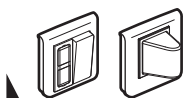
5 On entering the room, the 2nd nurse presses the door unit push-button.



6 The door unit red indicator and the corridor overdoor light go out. The door unit indicator and the corridor overdoor light come on with a steady white light.



In the nurses' station, the red indicator goes out and the yellow indicator returns to steady state.




7 On leaving the room, the nurse presses the door unit push-button and clears the call. All the indicators and the overdoor light go out.

NURSE PRESENT + CALL FROM ANOTHER ROOM

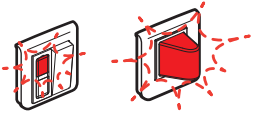
1 - Patient calls from room 1

2 - Nurse present in room 1

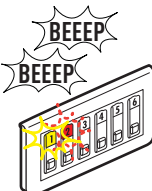
3 - Another patient calls from room 2



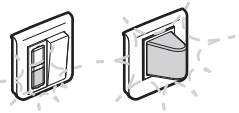
1 The patient calls from room 2 by pressing the corded push-button or hand-held remote control unit.




2 The door unit indicator and the corridor overdoor light for room 2 flash red slowly.



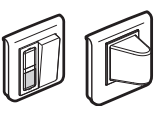
In the nurses' station, room number 2 lights up red and flashes slowly, and the buzzer beeps slowly.




In room 1 (and in the other rooms in the ward where a nurse is present): the door unit indicators and corridor overdoor lights flash white slowly.



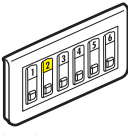
3 On entering room 2, the nurse presses the door unit push-button.



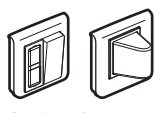
4 In room 1 (and in the other rooms in the ward where a nurse is present): the door unit indicators and corridor overdoor lights stop flashing.



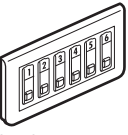
5 On leaving room 1, nurse 1 presses the door unit push-button and clears the call. All the indicators and the overdoor light go out.



In the nurses' station, room number 1 stops flashing and returns to a steady yellow light.



6 On leaving room 2, the nurse presses the door unit push-button and clears the call. All the indicators and the overdoor light go out.



In the nurses' station, room number 2 goes out.

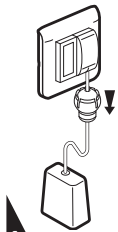
OPERATING MODE

NURSE PRESENT + CALL FROM ANOTHER BATHROOM

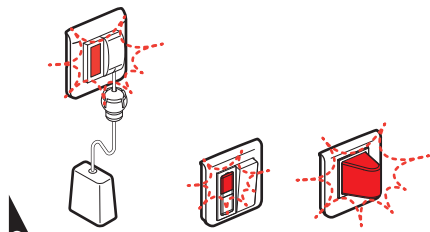
1 - Patient calls from room 1

2 - Nurse present in room 1

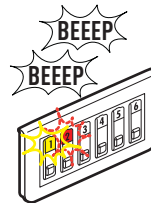
3 - Another patient calls from bathroom 2



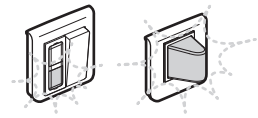
1 The patient calls from bathroom 2 by pulling the cord.



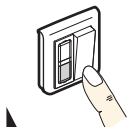
2 The door unit indicator, the indicator in the bathroom and the corridor overdoor light flash red quickly.



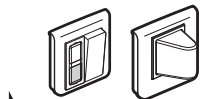
In the nurses' station, the room number is displayed, the indicator flashes red quickly and the buzzer beeps quickly.



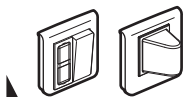
In room 1 (and in the other rooms in the ward where a nurse is present): the door unit indicators and corridor overdoor lights flash white quickly.



3 On entering room 2, the nurse presses the door unit push-button.



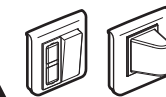
4 In room 1 (and in the other rooms in the ward where a nurse is present): the door unit indicators and corridor overdoor lights stop flashing.



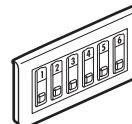
5 On leaving room 1, nurse 1 presses the door unit push-button and clears the call. All the indicators and the overdoor light go out.



In the nurses' station, room number 1 stops flashing and returns to a steady yellow light.



6 On leaving room 2, nurse 2 presses the door unit push-button and clears the call. All the indicators and the overdoor light go out.



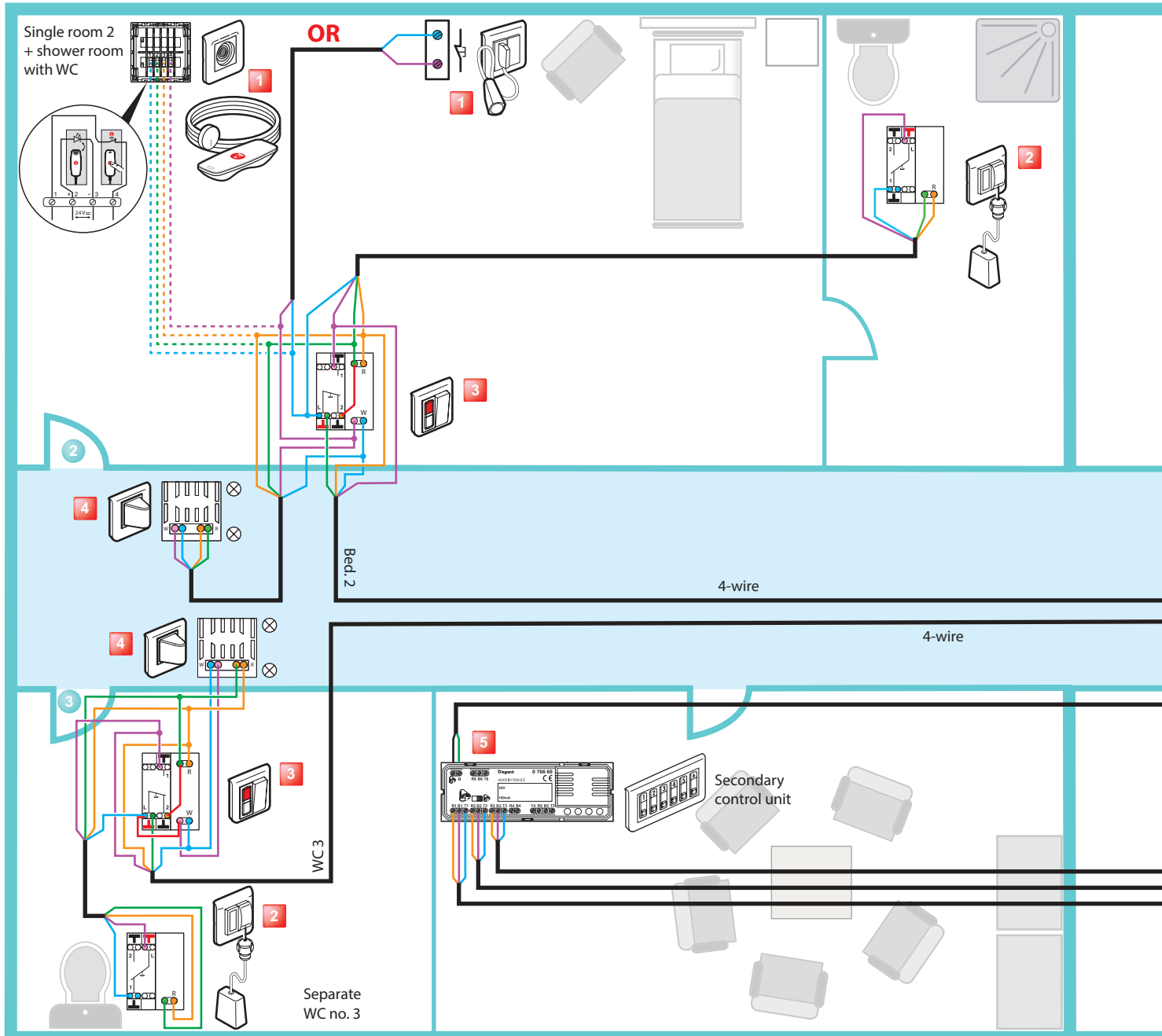
In the nurses' station, room number 2 goes out.

CALL PRIORITIES

PRIORITY	CALL TYPE	CONTROL DEVICE	DISPLAY ON DOOR UNIT AND CORRIDOR OVERDOOR LIGHT	DISPLAY ON CONTROL UNIT	MUTING FROM THE NURSE'S CONTROL UNIT(S)
	Emergency call (help) from bathroom				NO
	Emergency call (help) from bedroom				NO
	Biomedical alarm				NO
	Call from bathroom				NO
	Armchair call				YES
	Bed call				YES

NURSE CALL UNIT WIRING MOSAIC

CALL + PRESENCE INSTALLATION FOR NURSING HOMES AND RESIDENTIAL HOMES FOR THE ELDERLY



1 Magnetic socket Cat. No. 0 782 46 + hand-held remote control unit Cat. No. 0 782 01 or socket for corded push-button Cat. No. 0 766 63 + corded push-button Cat. No. 0 783 62

3 Door unit Cat. No. 0 782 04

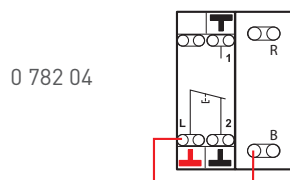
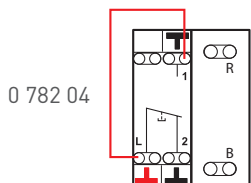
2 Bathroom call pull cord Cat. No. 0 766 64

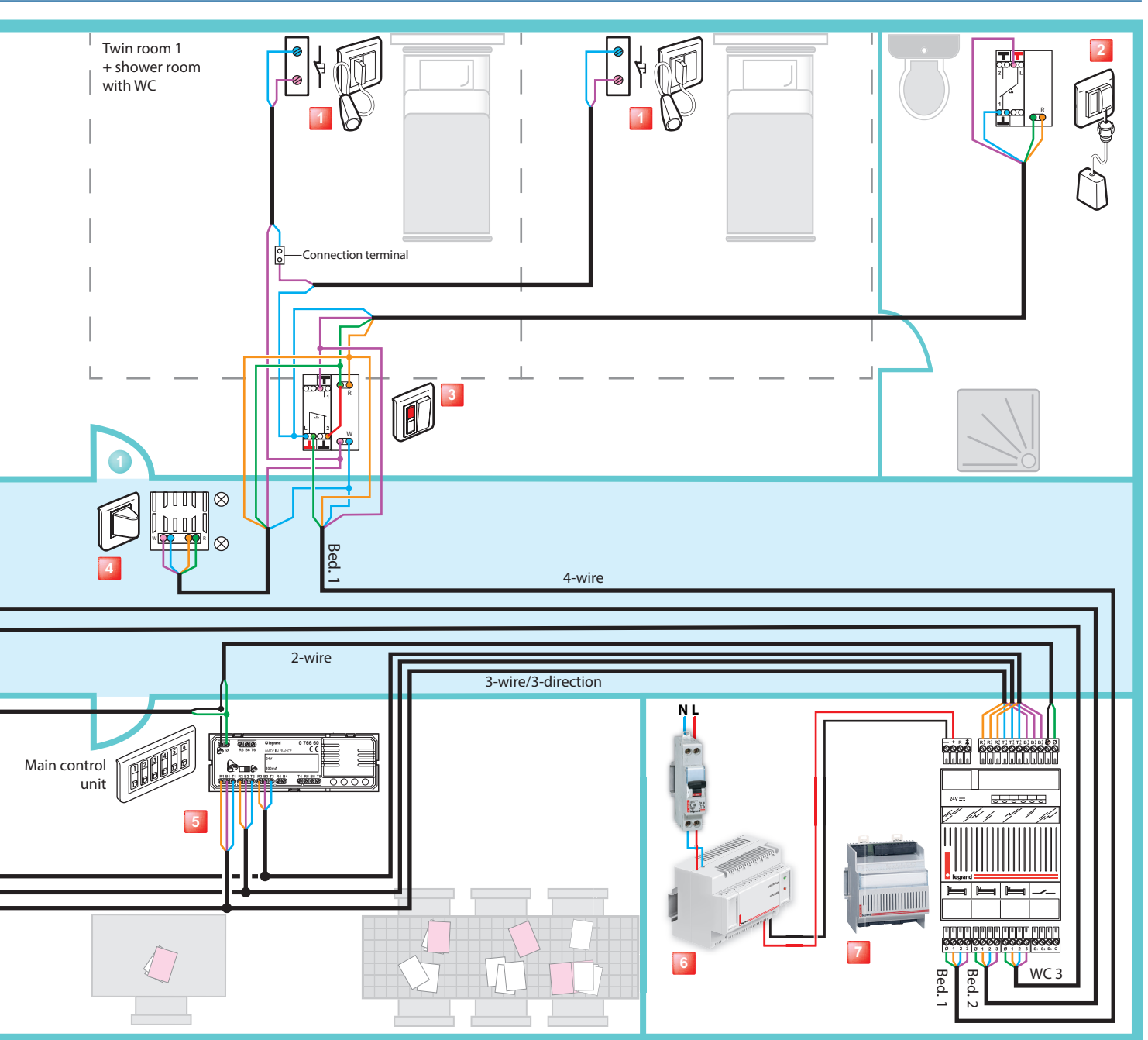
4 Double display corridor overdoor light unit Cat. No. 0 766 72

! Use wires with identical diameter. Recommendation: Use 0.9 mm² SYT cable.

If there is no bathroom pull-cord, make a shunt:

If there is no push-button cord (same as WC no. 3), make a shunt:





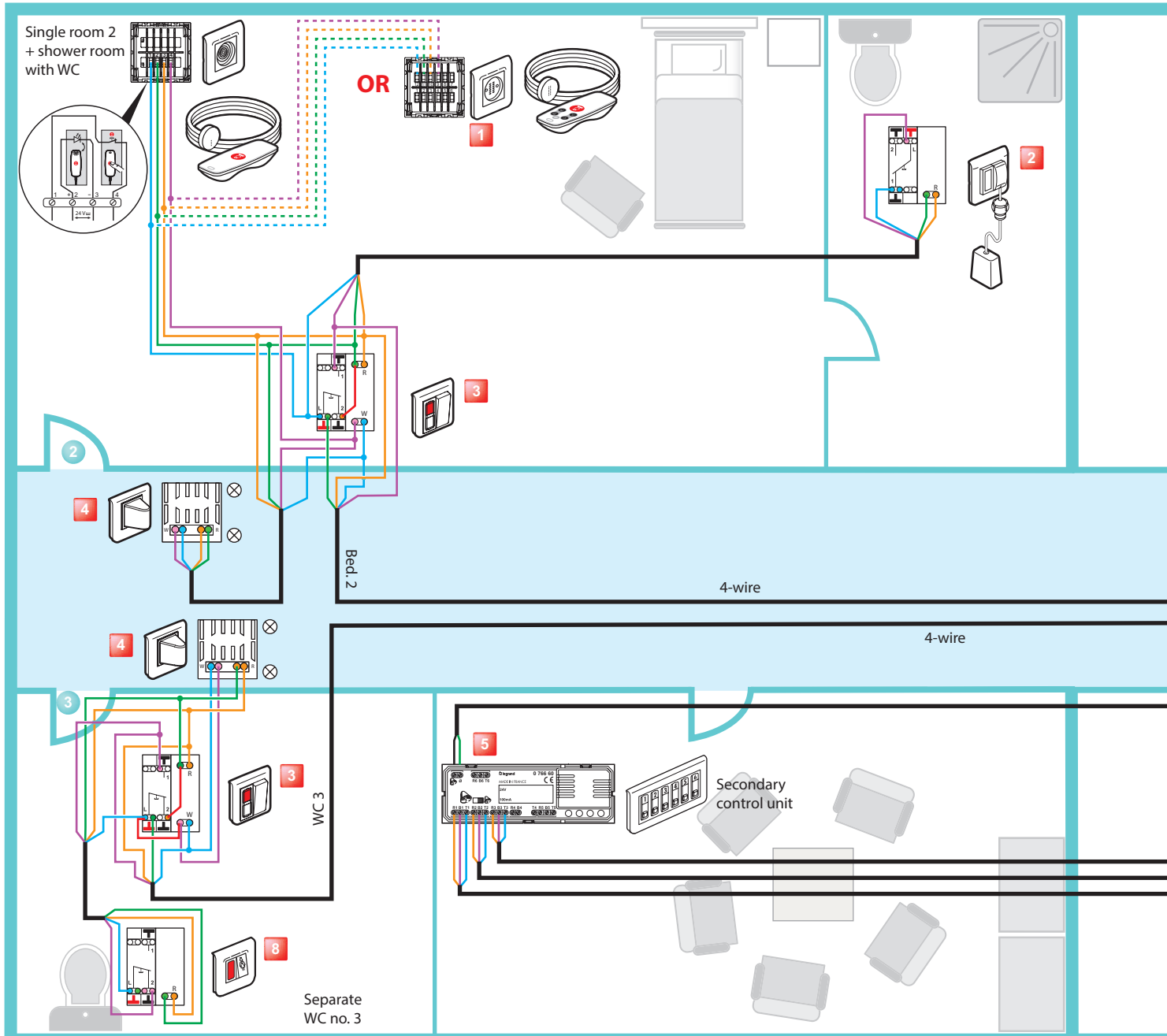
5 6-direction call display unit Cat. No. 0 766 60

7 3-direction management module Cat. No. 0 782 12

6 24 V power supply Cat. No. 0 782 89

NURSE CALL UNIT WIRING MOSAIC

CALL + PRESENCE INSTALLATION WITH HAND-HAND-HELD REMOTE CONTROL UNITS AND MAGNETIC SOCKETS



1 Socket + hand-held remote control unit for call
Cat. Nos. 0 782 41/46 + 0 782 01 or socket + hand-held remote
control unit for call Cat. Nos. 0 782 45/47 + 0 782 02/03

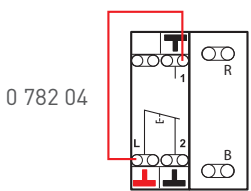
2 Bathroom call pull cord Cat. No. 0 766 64

3 Door unit Cat. No. 0 782 04

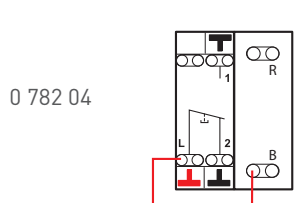
4 Double display corridor overdoor light unit Cat. No. 0 766 72

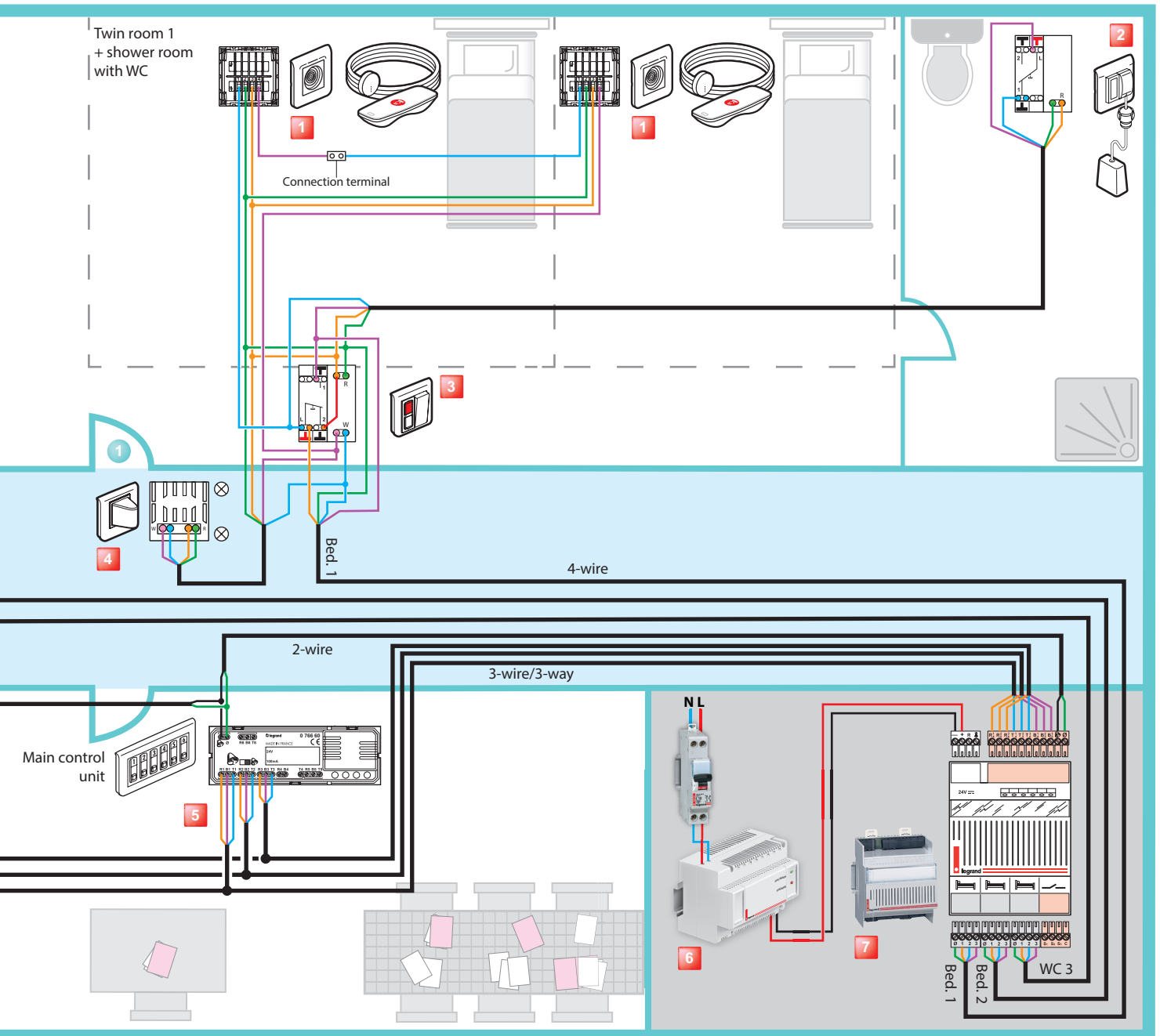
! Use wires with identical diameter. Recommendation: Use 0.9 mm² SYT cable.

If there is no bathroom pull-cord, make a shunt:



If there is no push-button cord (same as WC no. 3), make a shunt:





5 6-direction call display unit Cat. No. 0 766 60

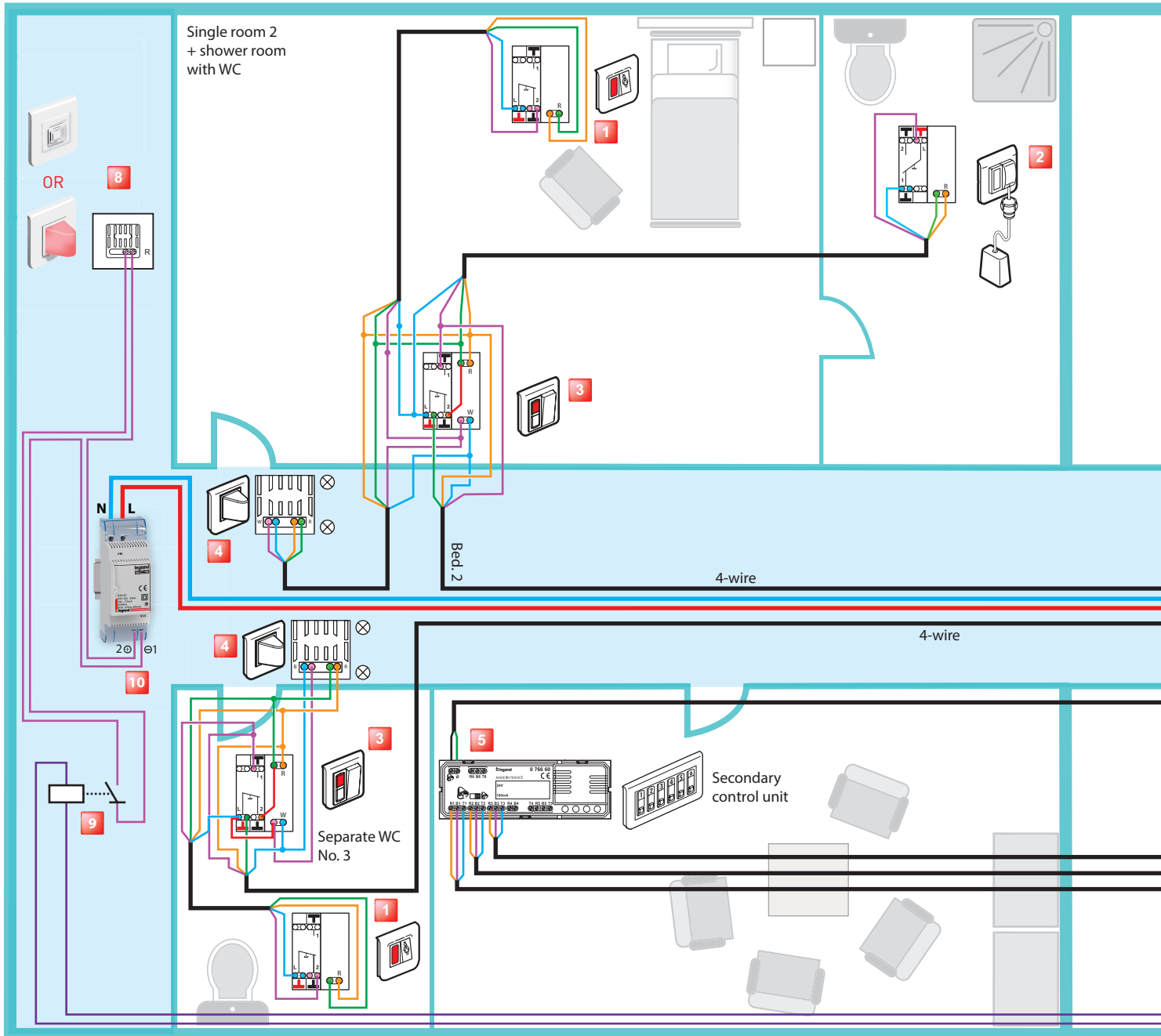
7 3-direction management module Cat. No. 0 782 12

6 24 V power supply Cat. No. 0 782 89

8 WC call unit Cat. No. 0 766 85

NURSE CALL UNIT WIRING MOSAIC

CALL + PRESENCE INSTALLATION WITH CALL VIA PUSH-BUTTON WITH INDICATOR AND INFORMATION TRANSFER

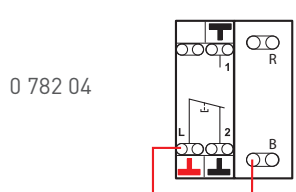
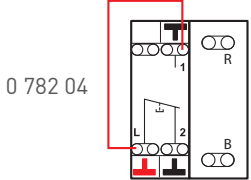


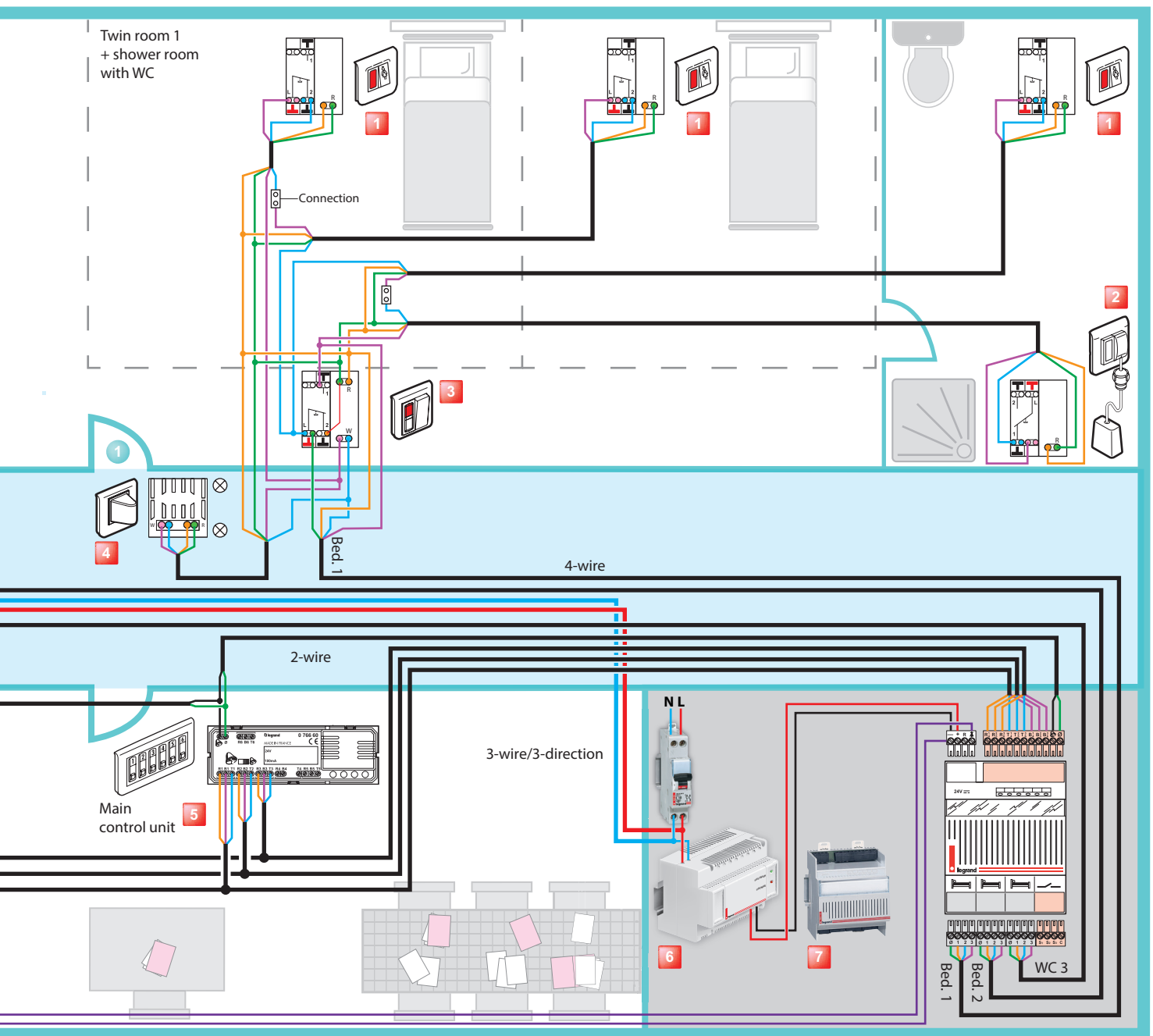
- 1** Bedhead or WC call unit Cat. No. 0 766 85
- 2** Bathroom call pull cord Cat. No. 0 766 64
- 3** Door unit Cat. No. 0 782 04
- 4** Double display corridor overdoor light unit Cat. No. 0 766 72

⚠ Use wires with identical diameter. Recommendation: Use 0.9 mm² SYT cable.

If there is no bathroom pull-cord, make a shunt:

If there is no push-button cord (same as WC no. 3), make a shunt:





5 6-direction call display unit Cat. No. 0 766 60

6 24 V power supply Cat. No. 0 782 89

7 3-direction management module Cat. No. 0 782 12

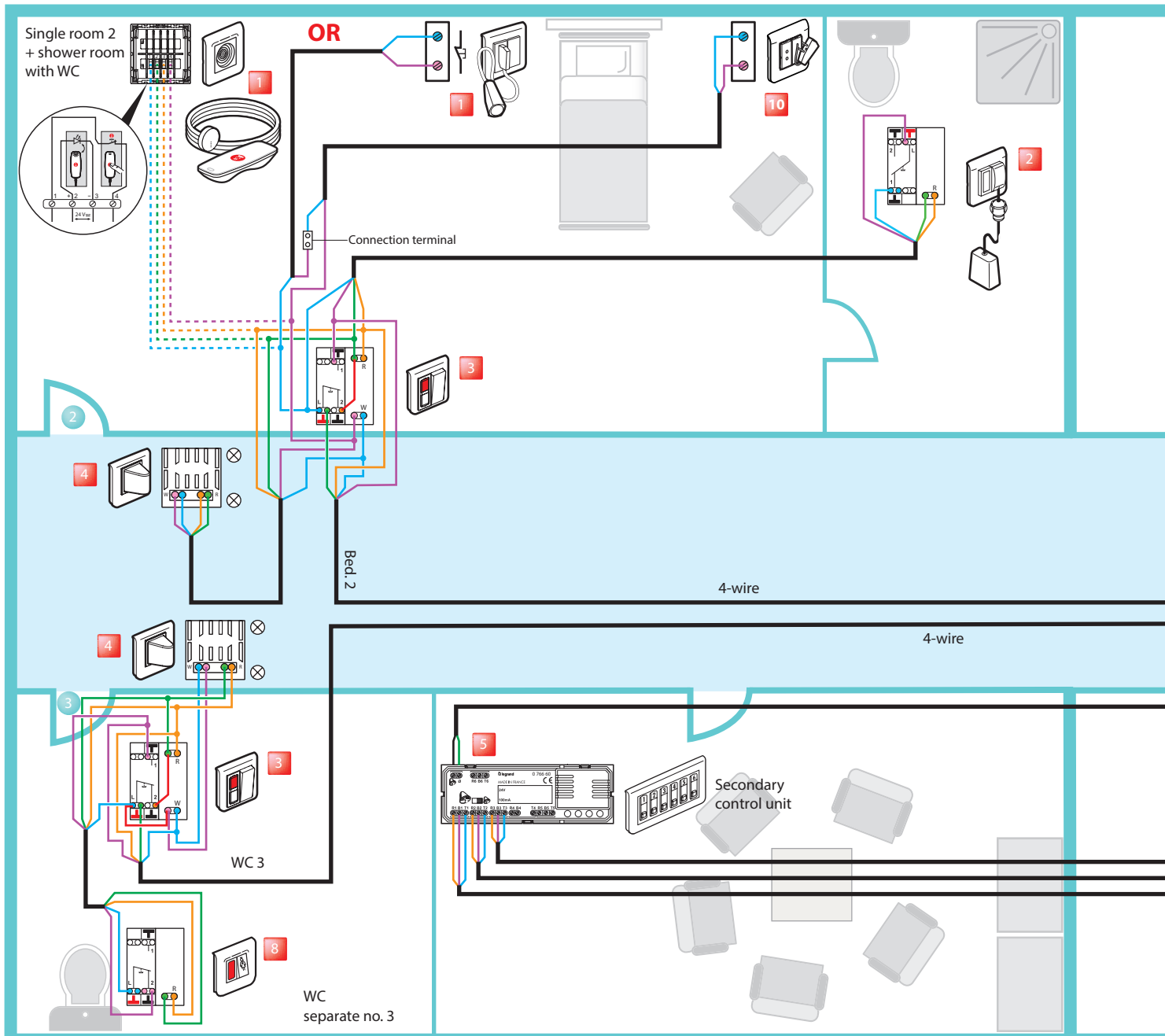
8 Electronic buzzer Cat. No. 0 766 42 or Call only
corridor overdoor light unit Cat. No. 0 766 71

9 24 V= solid state relay with 1 module

10 Auxiliary power supply Cat. No. 0 035 67

NURSE CALL UNIT WIRING MOSAIC

BED + ARMCHAIR CALL + PRESENCE INSTALLATION FOR NURSING HOMES AND RESIDENTIAL HOMES FOR THE ELDERLY



1 Socket + hand-held remote control unit for call Cat. Nos. 0 782 41/46 + 0 782 01 or socket for corded push-button Cat. No. 0 766 63 + corded push-button Cat. No. 0 783 62

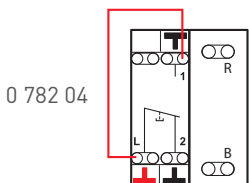
2 Bathroom call pull cord Cat. No. 0 766 64

3 Door unit Cat. No. 0 782 04

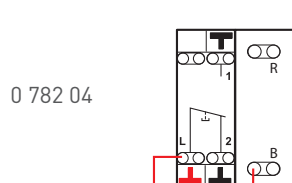
4 Double display corridor overdoor light unit Cat. No. 0 766 72

! Use wires with identical diameter. Recommendation: Use 0.9 mm² SYT cable.

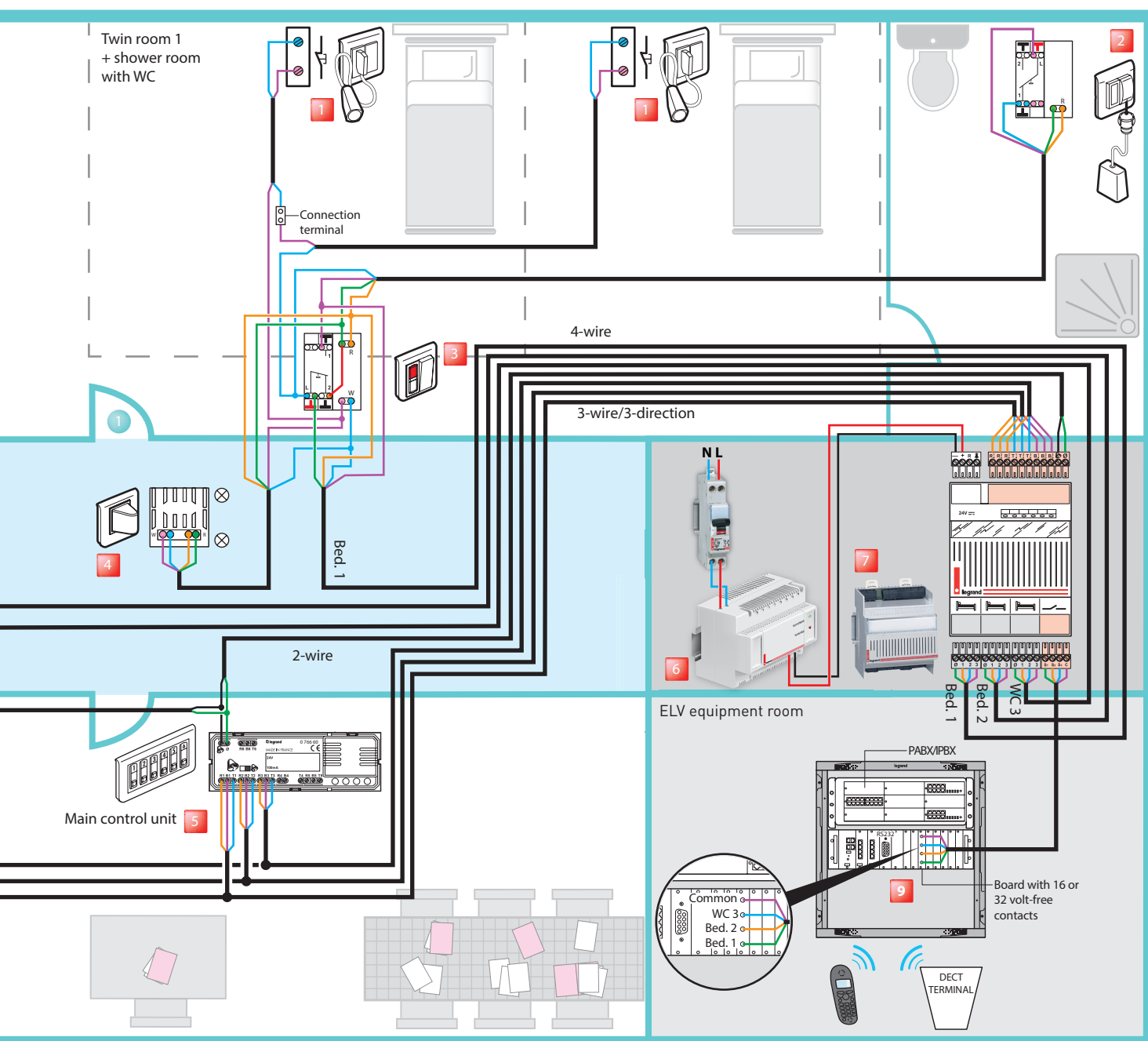
If there is no bathroom pull-cord, make a shunt:



If there is no push-button cord (same as WC no. 3), make a shunt:



WITH DECT INTERFACE (INTEGRATED TRACEABILITY)

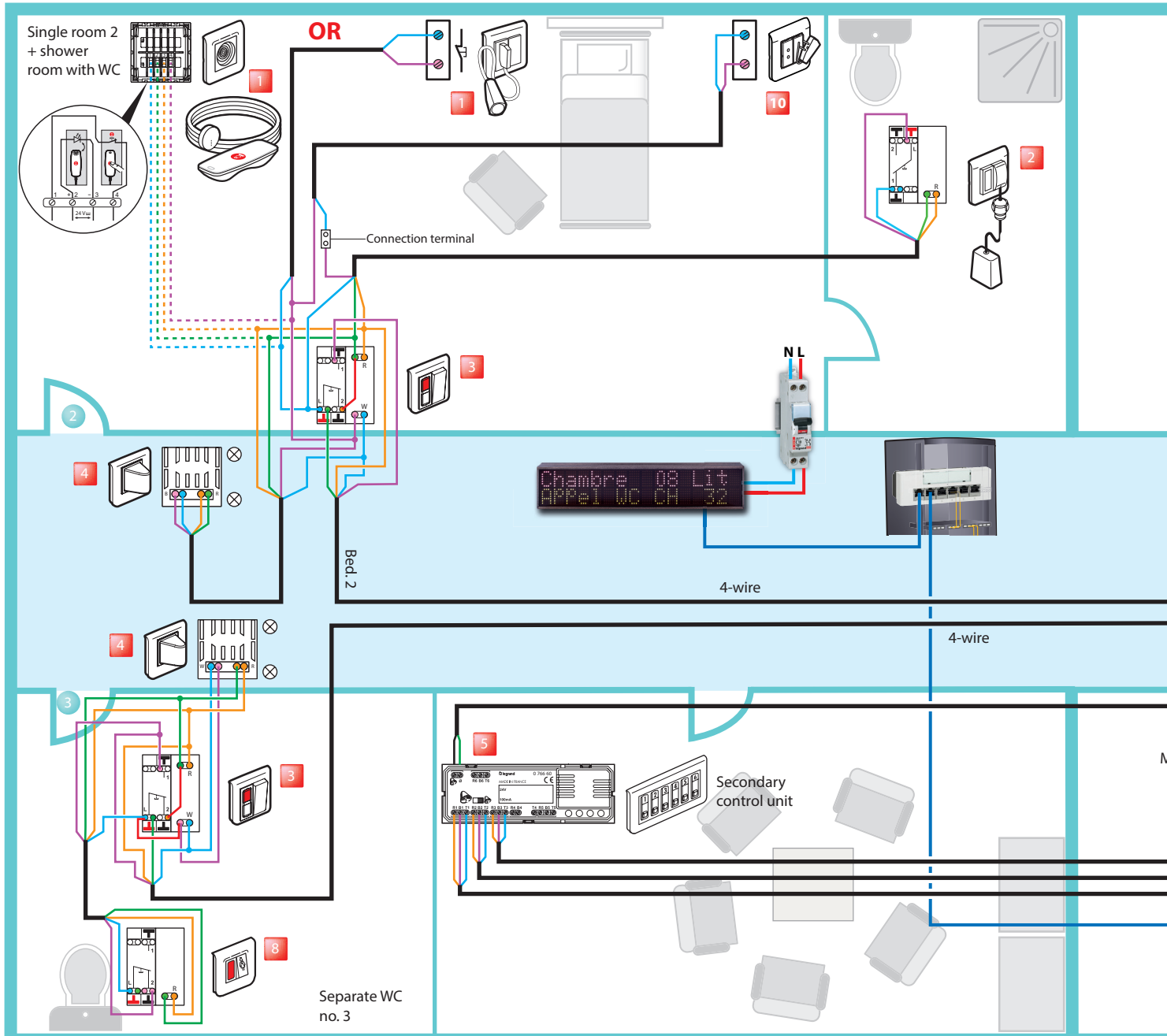


- 5** 6-direction call display unit Cat. No. 0 766 60
- 6** 24 V power supply Cat. No. 0 782 89
- 7** 3-direction management module Cat. No. 0 782 12

- 8** WC call unit Cat. No. 0 766 85
- 9** Telephone coupler (integrated traceability) (telephony package)
- 10** Armchair socket Cat. Nos. 0 771 50 + 0 782 07

NURSE CALL UNIT WIRING MOSAIC

CALL + BIOMEDICAL + PRESENCE INSTALLATION FOR CLINIC AND HOSPITALS WITH CORRIDOR DISPLAY UNITS



1 Socket + hand-held remote control unit for call Cat. Nos. 0 782 41/46 + 0 782 01 or socket for corded push-button Cat. No. 0 766 63 + corded push-button Cat. No. 0 783 62

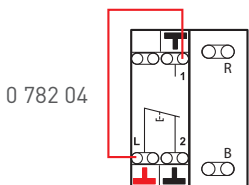
2 Bathroom call pull cord Cat. No. 0 766 64

3 Door unit Cat. No. 0 782 04

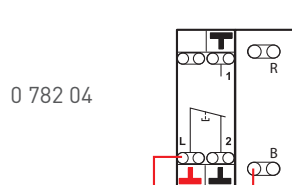
4 Double display corridor overdoor light unit Cat. No. 0 766 72

! Use wires with identical diameter. Recommendation: Use 0.9 mm² SYT cable.

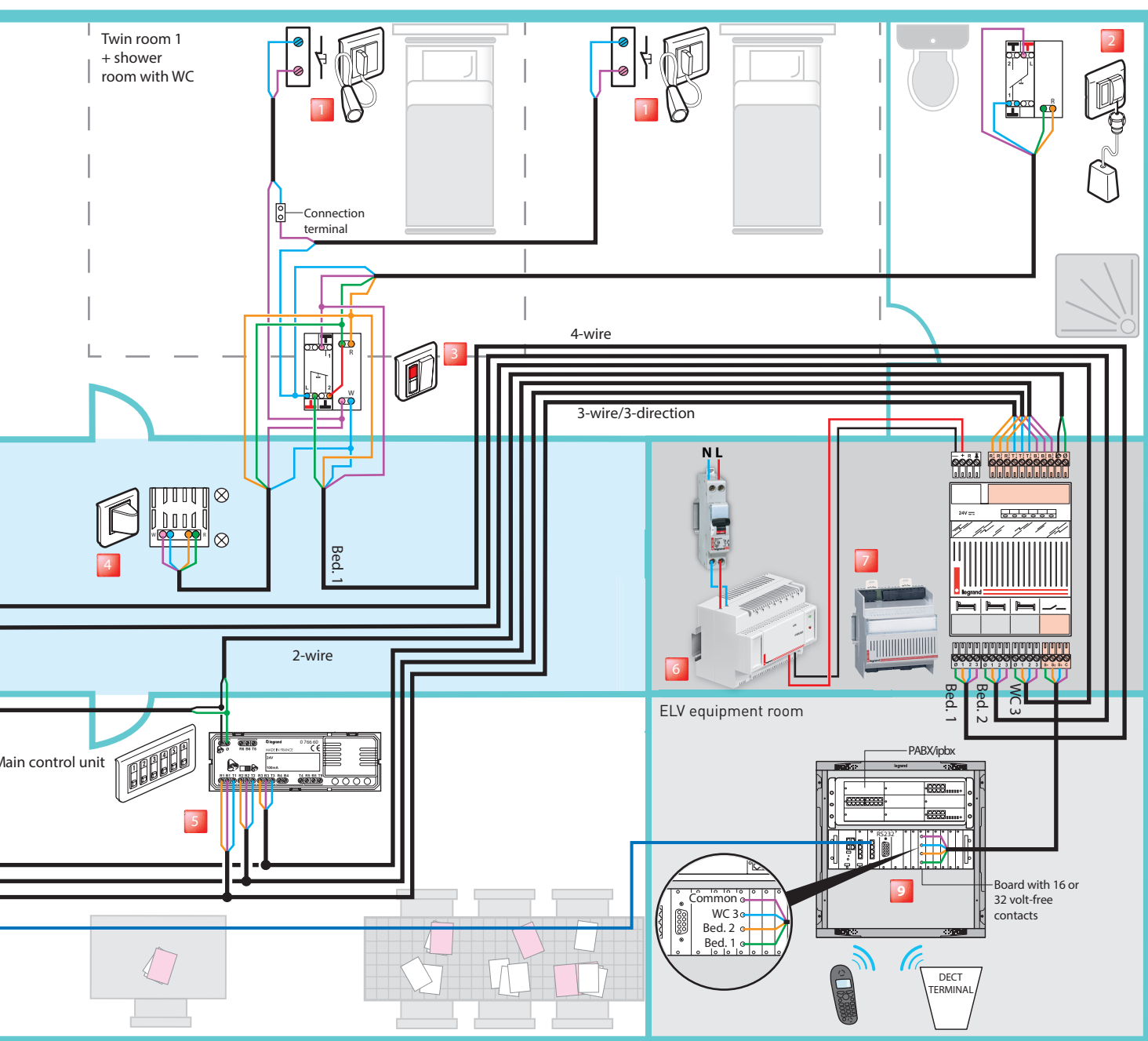
If there is no bathroom pull-cord, make a shunt:



If there is no push-button cord (same as WC no. 3), make a shunt:



(INTEGRATED TRACEABILITY)

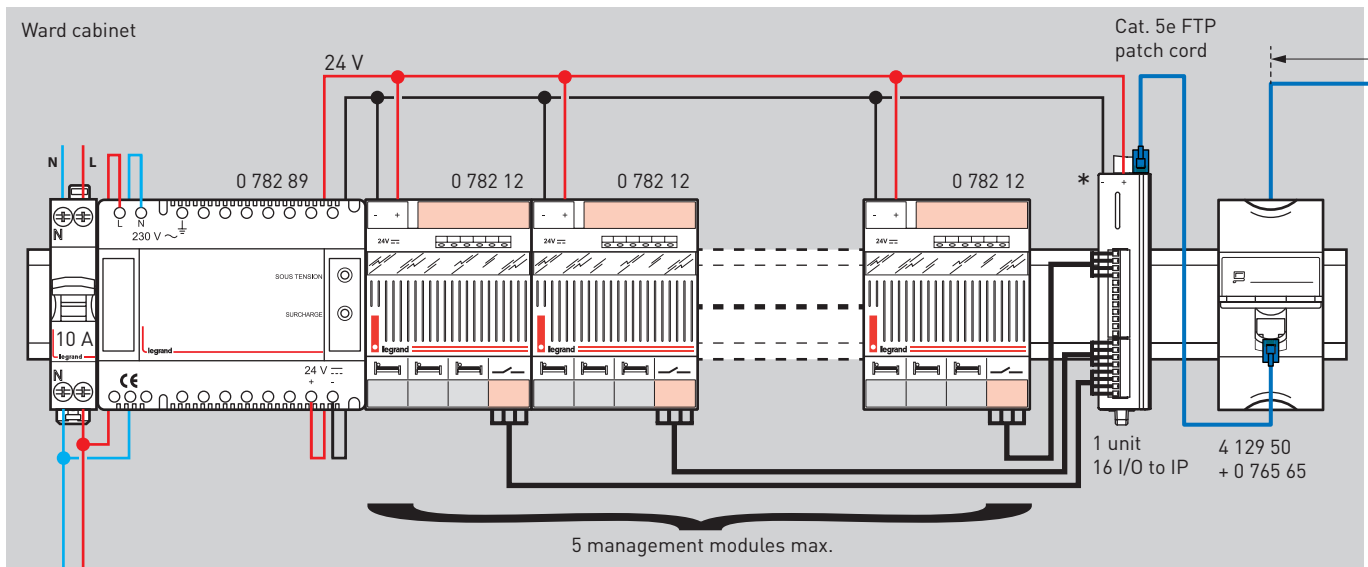


- 5** 6-direction call display unit Cat. No. 0 766 60
- 6** 24 V power supply Cat. No. 0 782 89
- 7** 3-direction management module Cat. No. 0 782 12

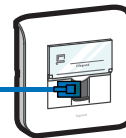
- 8** WC call unit Cat. No. 0 766 85
- 9** Telephone coupler (integrated traceability) (telephony package)
- 10** Biomedical alarm Cat. Nos. 0 771 50 + 0 782 07

NURSE CALL UNIT WIRING MOSAIC

230 V CABLE FOR PATIENT CALL + CORRIDOR DISPLAY UNITS AND IP NETWORK CABLING

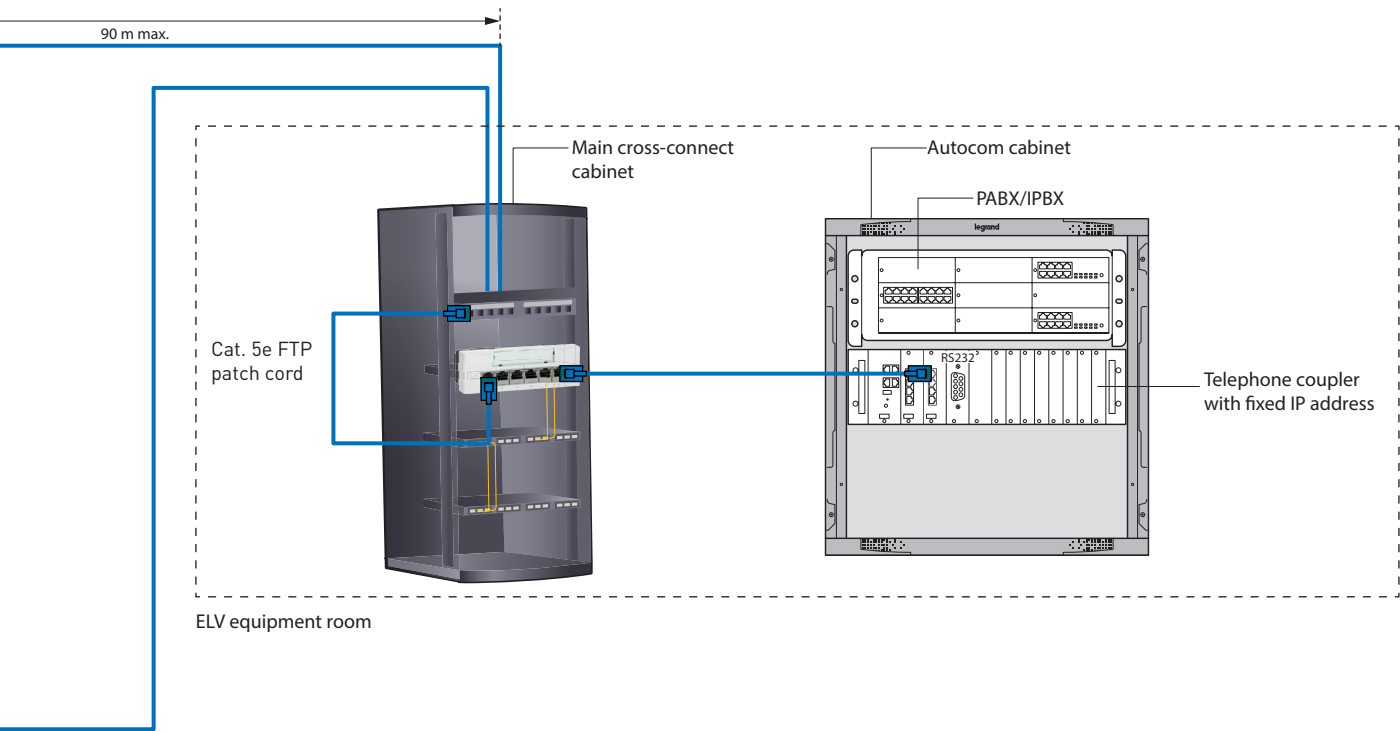


FTP patch cord Cat. 5e



Mosaic RJ45 socket
Cat. No. 0 765 63

* Volt-free contact interface module with 16 I/O to IP.
Supply with 24 V or PoE (check the power supply power rating).

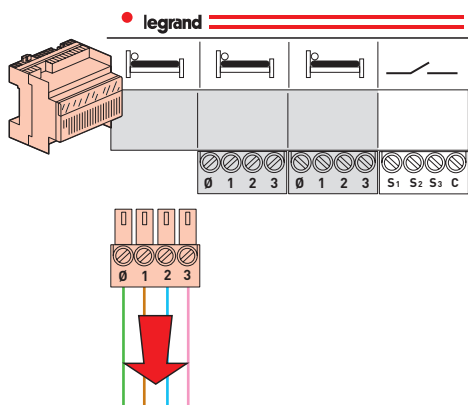


COMMISSIONING

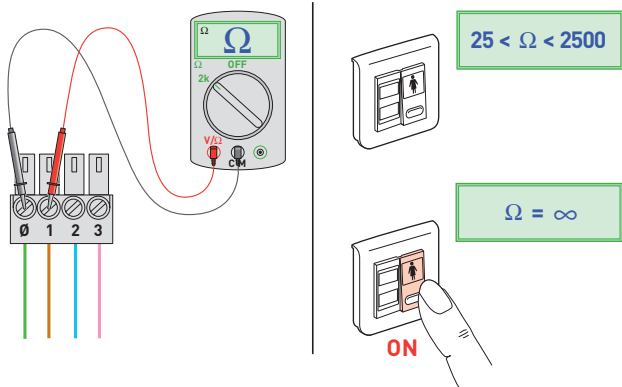
⚠ Test MUST be performed with the power OFF whenever the installation is modified

CHECK BEFORE SWITCH-ON

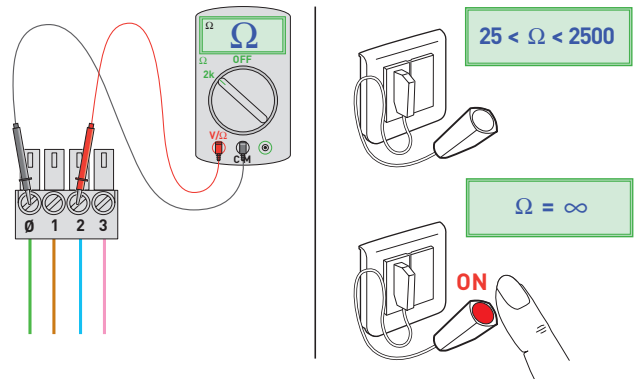
Step 1: Unplug the connector



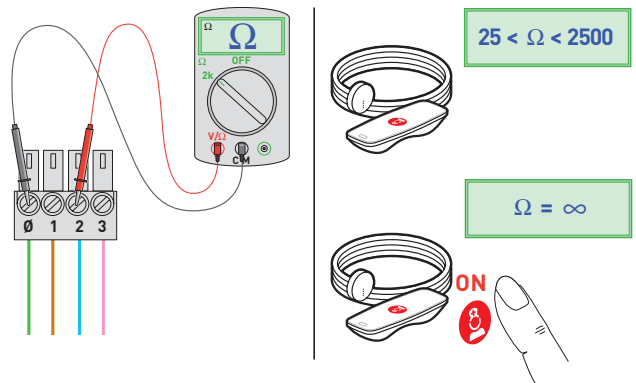
Step 2: Test circuit 1



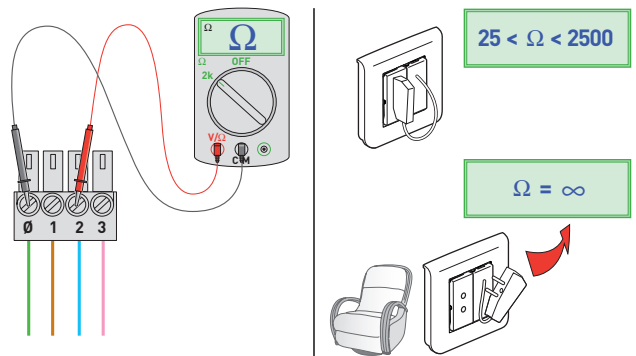
Step 3: Test circuit 2



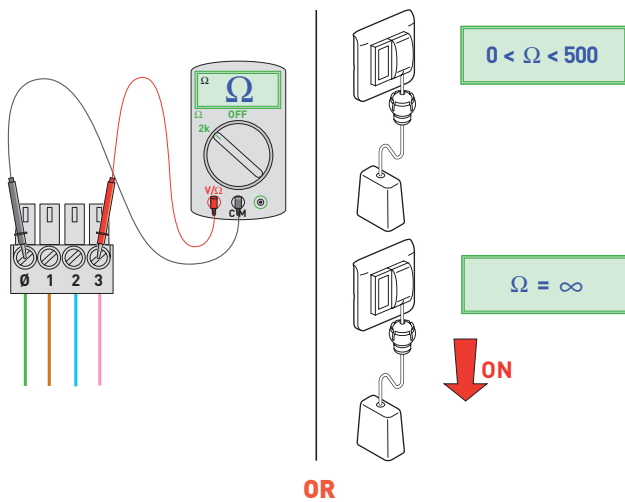
OR



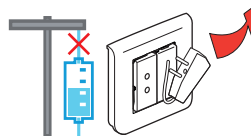
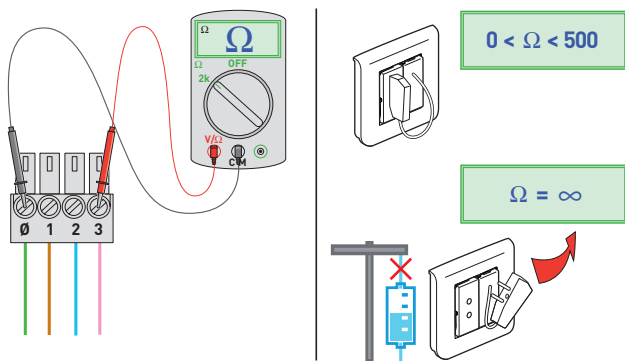
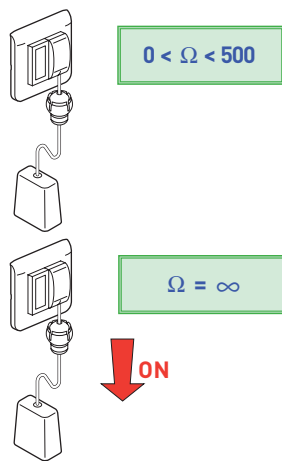
OR



Step 4: Test circuit 3

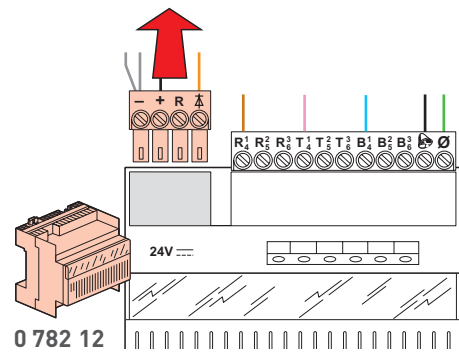


OR

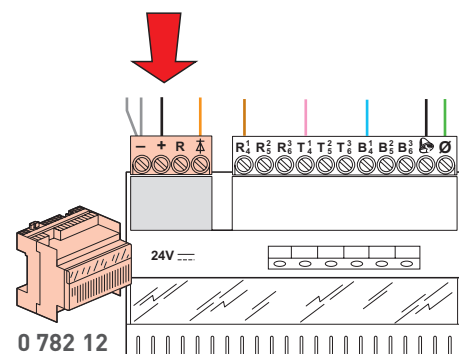


⚠ Repeat the steps for each direction

RESETTING THE MODULE



5 s



TROUBLESHOOTING

FAULT TYPE	DIAGNOSTICS
The corridor overdoor light is flashing white quickly	Door unit Cat. No. 0 782 04 faulty
The corridor overdoor light is flashing red slowly	Corded push-button faulty
The corridor overdoor light is flashing red quickly	Biomedical system or bathroom pull-cord faulty
One of the room LED indicators is faintly lit and never goes out	Management module is damaged and needs to be replaced
The indicator light on hand-held remote control unit 0 782 01/02/03 does not come on	The indicator light polarity on the magnetic socket is undoubtedly the wrong way round



FOLLOW
US ON

- @ www.legrand.com
-  www.youtube.com/legrand
-  www.twitter.com/legrand

LE08358AC - May 2018



Head Office
and International Management
87045 Limoges Cedex - France
Tel: +33(0)5 55 06 87 87
Fax: +33(0)5 55 06 74 55