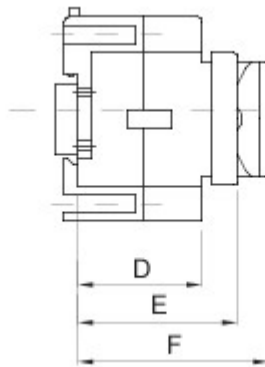
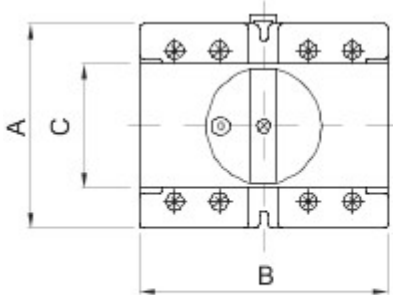


70 RT HP is a new range of 16A to 160A switch disconnecters in insulating material and metal, supplied in a box. Available in control and emergency versions, the range is completed by board versions for front-panel or DIN rail assembly, in 16 to 63A options, all of which can be equipped with auxiliary contacts. These devices have been designed to deliver the ultimate in reliability, functionality and performance. They offer a technologically advanced solution that simplifies installation, reduces wiring times and ensures maximum safety and robustness, even in the most demanding conditions, thanks to the use of high-performance materials.

Curent nominal (A)	32	Nr. poli	3
Nr. module EN 50022	4	Culoare buton	Negru
Versiune	Pentru fixare pe șină DIN	Electrocod	1742
Blocabil	Nu		



### DIMENSIONAL



	A	B	C	D	E	F
16 - 32 A	55	71	45	37	53	68
63A	73	89	45	44	56	68

### TECHNICAL SYMBOLOGY STANDARDS/APPROVALS



GEWISS S.p.A. Via A. Volta, 1  
24069 Cenate Sotto - Bergamo - Italy  
tel. +39 035 94 61 11 fax +39 035 94 69 09

www.gewiss.com  
sat@gewiss.com  
Last update 12/01/2020

Data, measures, designs and pictures are shown only as informativ purposes, and could be changed without previous notice