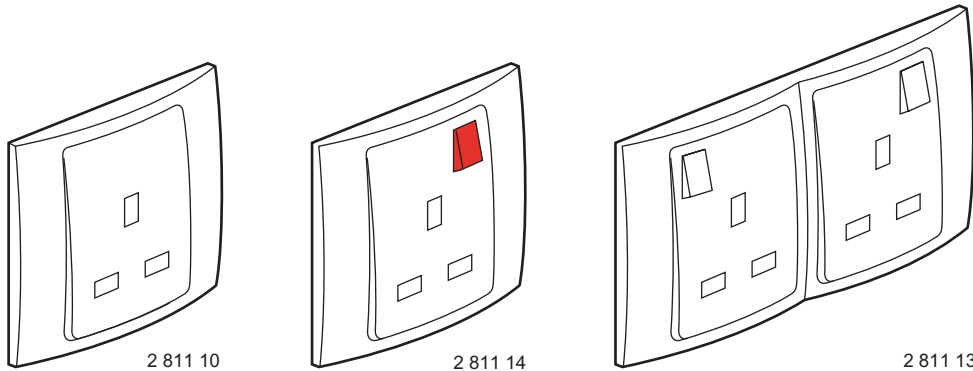


# Mallia™

## 13 A switched & unswitched socket outlets

Cat. No(s): 2 811 10/11/12/13/14/15



CONTENTS	Pages
1. Use .....	1
2. Range .....	1
3. Preparation .....	1-2
4. Overall dimensions .....	2
5. Connection .....	2
6. Operation .....	2
7. Technical characteristics .....	3
8. Cleaning .....	3

### 1. USE

General switched and unswitched 13 A socket outlets for use BS 1363 fused plugs.

### 2. RANGE

	Designation	Cat. No.	Connection method	Weight (g)	Characteristics
	1 gang unswitched socket outlet	2 811 10	with screws	82	13 A - 250 VAC
	1 gang switched socket outlet	2 811 11	with screws	83	13 A - 250 VAC
	2 gang unswitched socket outlet	2 811 12	with screws	133	13 A - 250 VAC
	2 gang switched socket outlet	2 811 13	with screws	139	13 A - 250 VAC
	1 gang switched socket outlet with red indicator	2 811 14	with screws	83	13 A - 250 VAC
	2 gang switched socket outlet with red indicator	2 811 15	with screws	139	13 A - 250 VAC

### 3. PREPARATION

#### Flush-mounting:

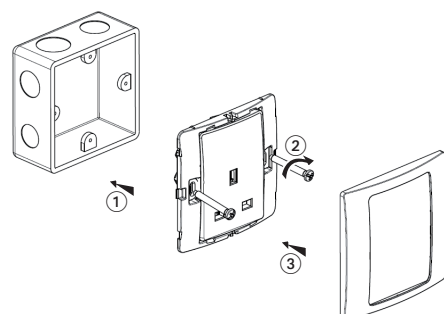
- All products supplied with 2 x M 3.5 fixing screws.
- It is recommended that redundant top and bottom fixing lugs in metal back boxes are bent back to increase room for mechanism and their attendant wiring.
- 25 mm minimum depth back boxes suitable for 13 A sockets.
- 35 mm recommended depth back boxes for extra wiring space.

#### Surface mounting:

- 1 gang 35 mm minimum deep pattress
- 2 gang 35 mm minimum deep pattress

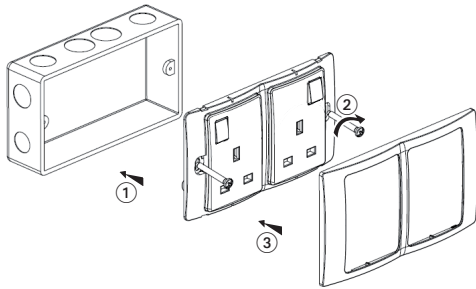
### 3. PREPARATION (continued)

#### 3.1 General preparation for 2 811 10/11/14

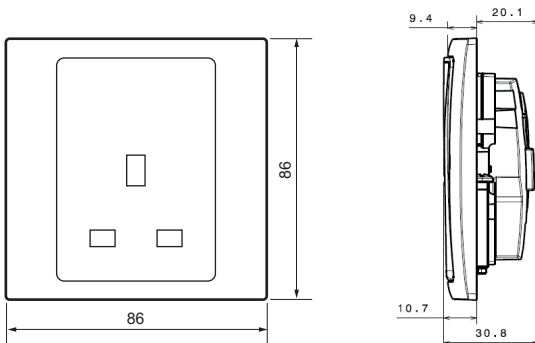


3. PREPARATION (continued)

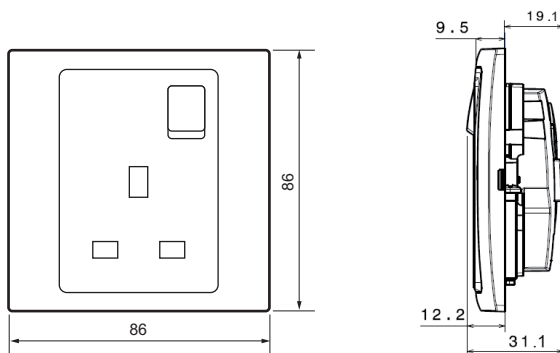
3.2 General preparation for 2 811 12/13/15



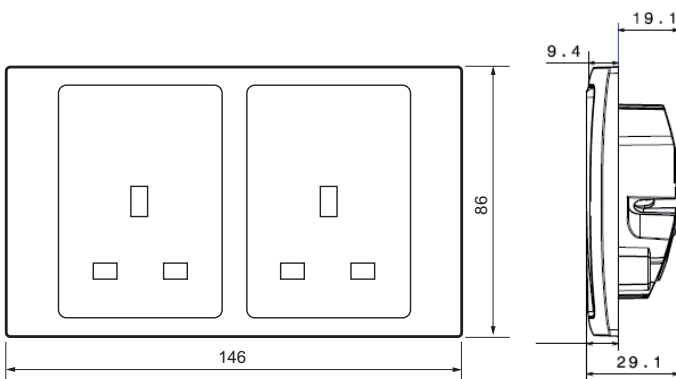
4. OVERALL DIMENSIONS



Profile size: 86 x 86 mm  
Distance of installation hole: 60.3 mm  
Cat. No.: 2 811 10

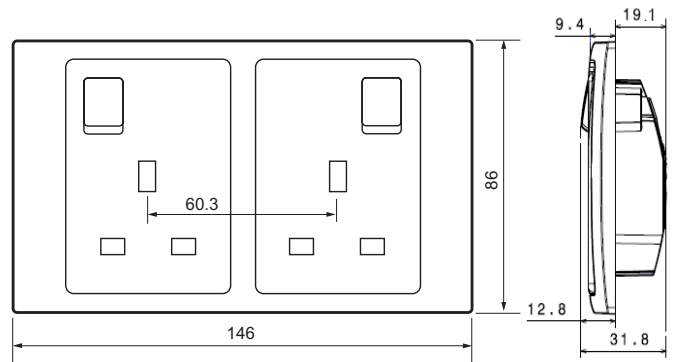


Profile size: 86 x 86 mm  
Distance of installation hole: 60.3 mm  
Cat. No.: 2 811 11/14



Profile size: 146 x 86 mm  
Distance of installation hole: 120.6 mm  
Cat. No.: 2 811 12

4. OVERALL DIMENSIONS (continued)



Profile size: 146 x 86 mm  
Distance of installation hole: 120.6 mm  
Cat. No.: 2 811 13/15

5. CONNECTION

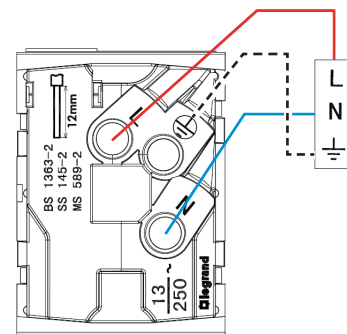
5.1 Terminals

Terminal capacity: 3 x 2.5 mm<sup>2</sup>  
3 x 4.0 mm<sup>2</sup>  
2 x 6.0 mm<sup>2</sup>

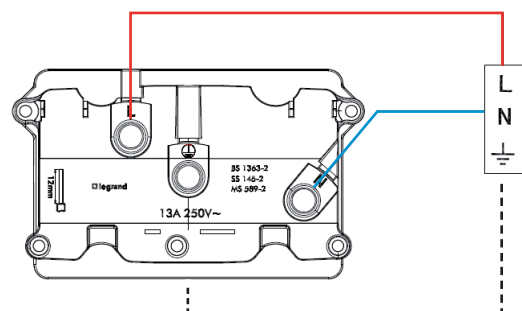
Stripping: 12 mm

The number of terminal earth depends on Cat. No.  
Recommended screwdriver size: 4 mm flat blade  
Recommended terminal tightening torque: 0.8 Nm

5.2 Circuit diagrams



Cat. No.s: 2 811 10/11/14



Cat. No.s: 2 811 12/13/15

6. OPERATION

Standard operation by insertion or withdrawal of a plug to normalized standard

## 13 A switched & unswitched socket outlets

### 7. TECHNICAL CHARACTERISTICS

#### 7.1 Mechanical characteristics

Impact tests: IK04

Protection against liquids: IP41

Patented 3-pin operated shutter mechanism.

Terminals all supplied in backed-off position.

#### 7.2 Material characteristics

Rocker: Polycarbonate

Frame: Polycarbonate

Support: Polycarbonate

Base: Polypropylene

#### 7.3 Electrical characteristics

Self-extinguishing: 650°C / 30 s

Voltage: 250 VAC

Current: 13 A

#### 7.4 Climatic characteristics

Storage temperatures: - 10°C to + 70°C

Operating temperatures: - 5°C to + 50°C

### 8. CLEANING

Surface cleaning with a cloth.

Do not use: acetone, tar remover, trichloroethylene.

Resistance to the following cleaning agents:

Hexane (EN 60669-1), Methylated spirits, Soapy water, Diluted ammonia,

Diluted pure bleach 10 %, Glass cleaning substance, Pre-impregnated

wipes.

**Caution:** a preliminary test should be carried out if other specific cleaning products are to be used.