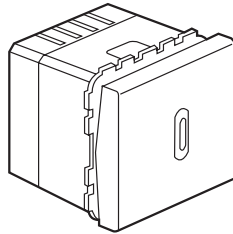


**Arteor™**  
**Time delay switch**

**Cat. No(s): 5 720 55 - 5 740 84  
 5 741 37/38**



5 720 55 - 5 740 84 - 5 741 37/38

**1. USE**

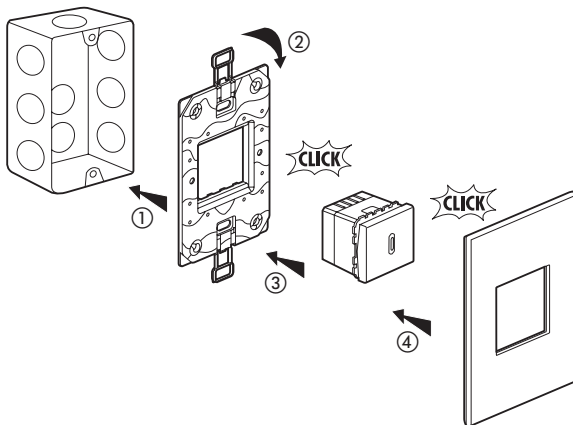
Lighting or heating control with a time delay function when switched off.

**2. RANGE**

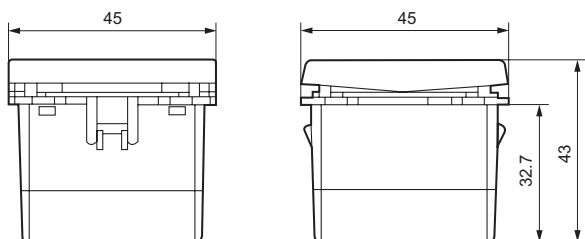
Designation	Finishes				Number of modules	Fixing method	Connection method	Characteristics
	White	Magnesium	Soft Alu	Champagne				
Time delay switch	5 720 55	5 740 84	5 741 37	5 741 38	2	with clips	with screws	250V 50/60 Hz

**3. PREPARATION**

The mechanism can be flush-mounted or surface-mounted.

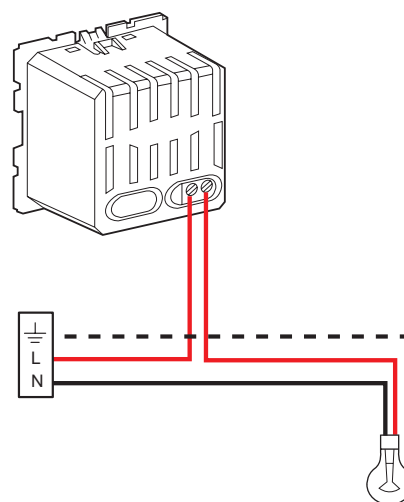


**4. OVERALL DIMENSIONS**



**5. CONNECTION**

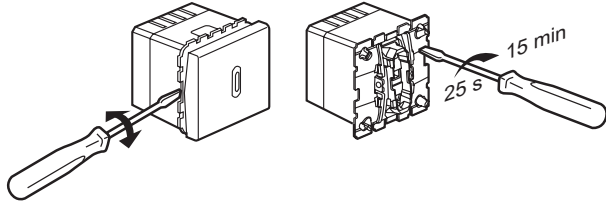
Number of terminals: 2  
 Terminal type: with screws  
 Stripping: 6 mm  
 Terminal capacities: 1 x 2.5 mm<sup>2</sup> flexible or rigid  
 Screwdriver: 3.5 mm flat-blade



## 6. OPERATION

### Adjustment:

Remove the rocker, then use a flat-blade screwdriver to adjust to the desired time delay value (from 25 seconds to 15 minutes).



### Operation:

- Pressing causes switching on time delay period.
- Pressing for < 2 seconds during the time delay period restarts the time delay process.
- Pressing for > 2 seconds during the time delay period stops the time delay process.

The switch has an indicator LED.

## 7. TECHNICAL CHARACTERISTICS

### ■ 7.1 Mechanical characteristics

Impact tests: IK 04

Protection by solid bodies / liquids: IP 41

### ■ 7.2 Material characteristics

Cover plate: ABS (RAL 9003)

Base: Polycarbonate

Drive: Polycarbonate

### ■ 7.3 Electrical characteristics

Self-extinguishing: 650°C/30 s

Voltage: 250 V

Frequency: 50/60 Hz

### Max. power:

①	②	③	④
1840 W	400 VA	2 x 58 W - 14 µF	1000 W
⑤	⑥	⑦	⑧
400 W	250 VA	400 VA	400 VA

1 - Resistive

2 - Non compensated fluo

3 - Compensated fluo

4 - Incandescent

5 - Compact fluorescent and fluo with electronic transformer

6 - Fan drives

7 - ELV halogene with ferromagnetic transformer

8 - ELV halogene with electronic transformer

### ■ 7.4 Climatic characteristics

Storage temperature: - 10°C to + 60°C

Operating temperature: - 5°C to + 50°C

## 8. CLEANING

Surface cleaning with a cloth

Do not use: acetone, tar remover, trichloroethylene

### ■ 8.1 Resistance to cleaning agents

Resistance to the following agents: Hexane (EN-60669-1),

Methylated spirits, Soapy water, diluted ammonia, diluted pure bleach

10%, Glass cleaning substance, Pre-impregnated wipes.

**Caution:** Always test before using other special cleaning products.

## 9. STANDARDS AND APPROVALS

Compliance with installation and manufacturing standards.

Refer to e-catalogue.