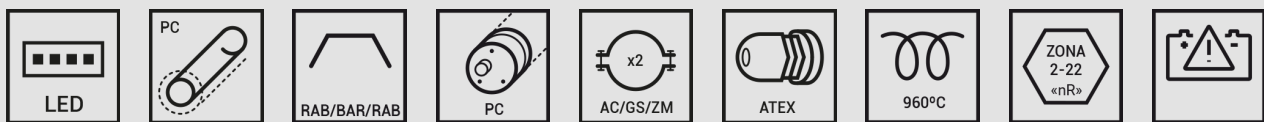
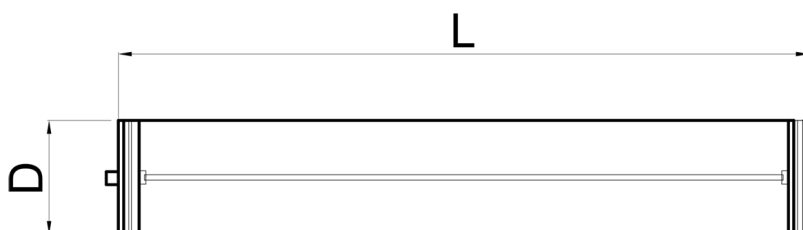
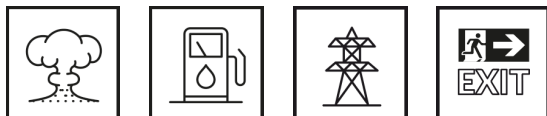



SECURE BLOCK

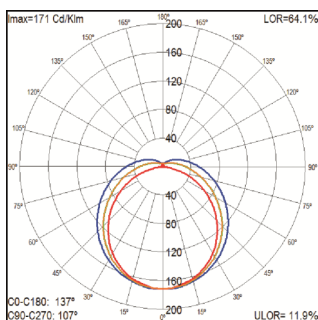
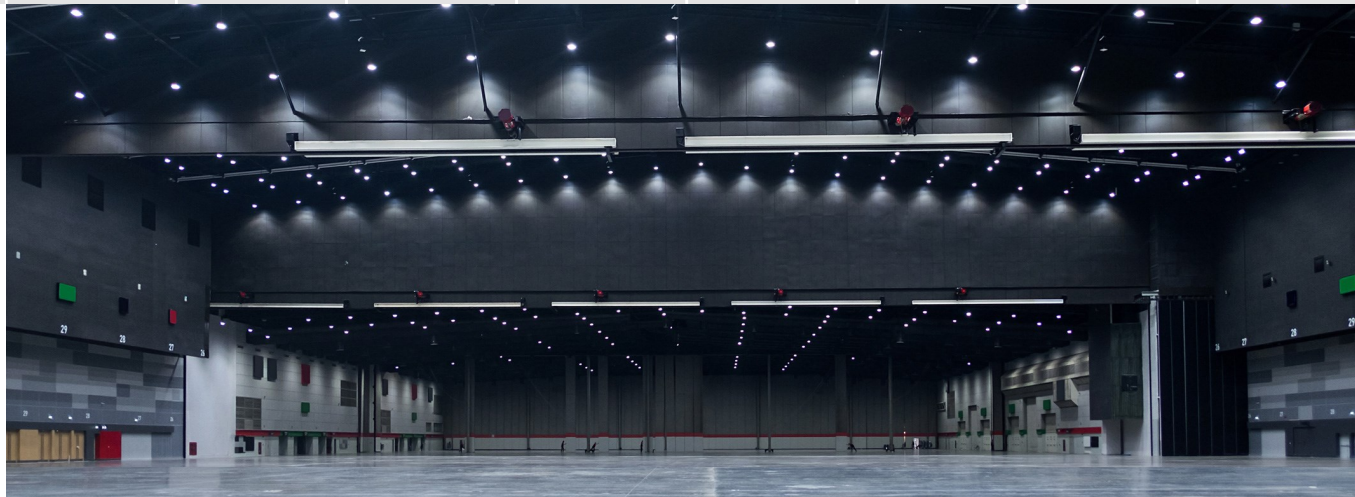


APLICACIONES INDICADAS / SUITABLE APPLICATIONS / APPLICATIONS APPROPRIÉES





RG1	MACADAM 3/4	UGR <19	L70B50 > 50.000	IP68-2	IK10	CE	2014/34/EU  II 3GD Ex nR IIC T6 Gc Ex tc IIIC T85 °C Dc
-----	----------------	------------	-----------------------	--------	------	----	--



- **Permanente** / maintained
- **No permanente** / non-maintained
- **Permanente modo on/off** / Permanent mode switched

Ref.	Emisión Light emission Intensité lum	Modo Mode Mode	Autonomía Autonomy Autonomie	Tª color Tª colour Tª couleur	L	D	Embalaje Packaging Emballage
	(lm)	(W)	(h)		(mm)	(mm)	
EXSB1	100	●	1,5	5.500	415	81	1
EXSB13	100	●	3	5.500	415	81	1
EXSB4	100	●	1,5	5.500	415	81	1
EXSB43	100	●	3	5.500	415	81	1
EXSB7	100	●	1,5	5.500	415	81	1
EXSB73	100	●	3	5.500	415	81	1
EXSB2	200	●	1	5.500	415	81	1
EXSB5	200	●	1	5.500	415	81	1
EXSB8	200	●	1	5.500	415	81	1
EXSB3	300	●	1	5.500	415	81	1
EXSB5	300	●	1	5.500	415	81	1
EXSB9	300	●	1	5.500	415	81	1

ACCESORIOS SECURE BLOCK / SECURE BLOCK ACCESORIES / ACCESSOIRES SECURE BLOCK



VINILO
VINYL
VINYLE

Ref. Q0310