

INSTALLATION MANUAL

67500

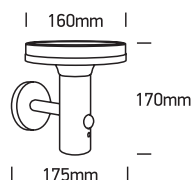
ecolight



80
CRI

CE

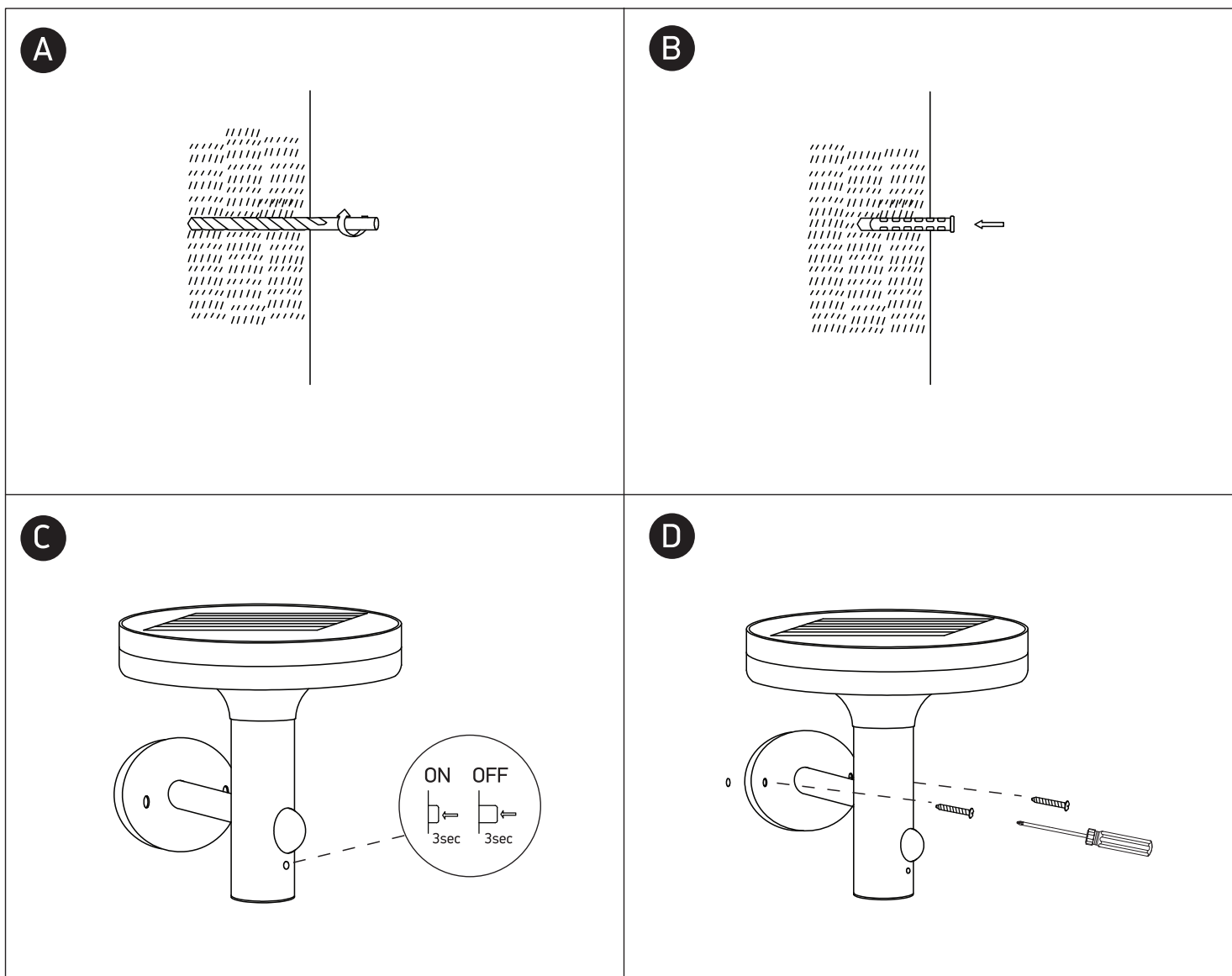
RoHS
COMPLIANT



6W | LED | IP44 | Solar powered | Sensor | Aluminium

1x2200mAh lithium battery / 3 Modes operation

one
LIGHT



PIR Sensor:
Distance less or equal to 8m and within angle 120°

ON/OFF operation:

- Press 3 seconds to turn on/off the light

Change mode:

- Press 1 second

Mode A: • ON 75lm 8hours

Mode B: • ON 75lm
• Detection 400lm

Mode C: • OFF
• Detection 480lm

Warnings:

1. Battery have the function of overcharge and discharge protection.
2. Please do not change anything of Solar panel or battery.
3. Please understand that the work time will be effected when sunshine is not enough (rainy, cloudy or winter).
4. It needs to clean the solar surface periodically.