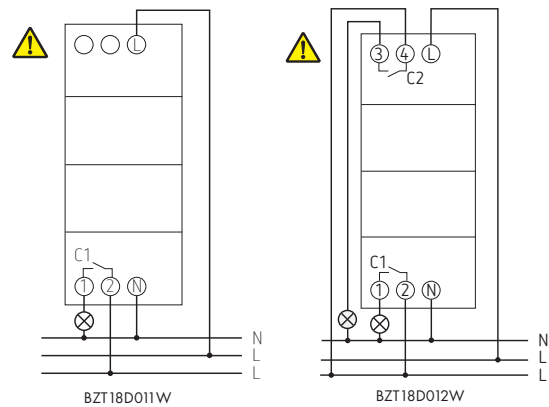


Digital Day-, Week Time Switch, Tempus Digital, 1 Channel (BZT18D011W) and Digital Day-, Week Time Switch, Tempus Digital, 2 Channels (BZT18D012W)



- Mount on DIN top hat rails (as defined in EN 60715)
- Switched voltage-free
- Ensure device cannot be switched on
- Check absence of voltage
- Earth and bypass
- Cover or shield any adjacent live components

Connecting the time switch



1. Basic safety information

WARNING
Danger of death through electric shock or fire!
 ➤ Installation should only be carried out by a qualified electrician!

- The device is designed for installation on DIN top hat rails (in accordance with EN 60715)
- The device corresponds to type 1 STU in accordance with IEC/EN 60730-2-7

2. Proper use

- The time switch is used for lighting, ventilation and flushing applications etc.
- Only for use in closed, dry rooms

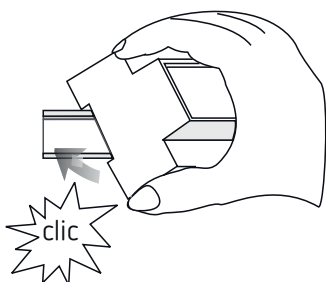
⚠ Do not use on safety devices, e.g. escape route doors, fire safety equipment etc.

Disposal

- Dispose of device in environmentally sound manner

3. Installation and connection

Mounting the time switch



4. Device description

Display & buttons

Programmed switching times: 0 6 12 18 24

Date display: 22 09 19

Channel status: C1 on C2 off

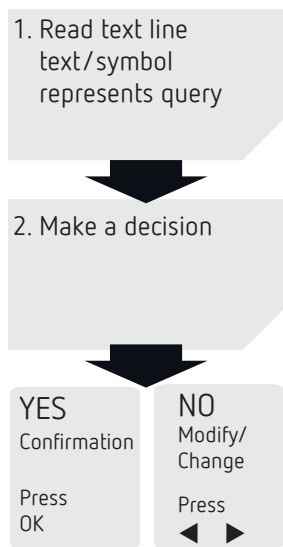
Time display: 8:11:00

Days of the week from 1 to 7: 1 2 3 4 5 6 7

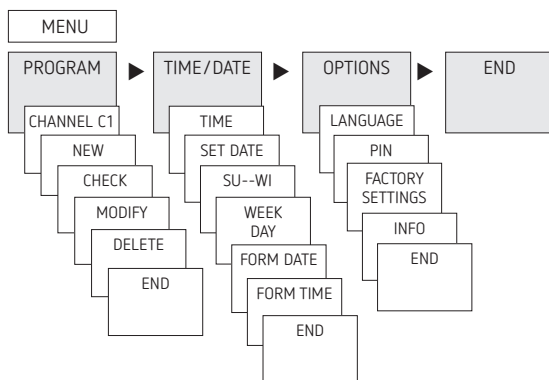
Display of the active buttons with the relevant function

- **MENU**
 - Activate display
 - Open menu
 - Cancel menu
 - ESC (leave menu)
- **OK**
 - Save selection
 - Confirm selection
- **Options are displayed**

Operating instructions

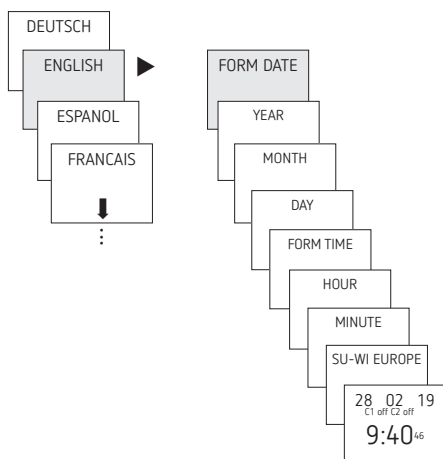


Overview of navigation menu



Initial operation

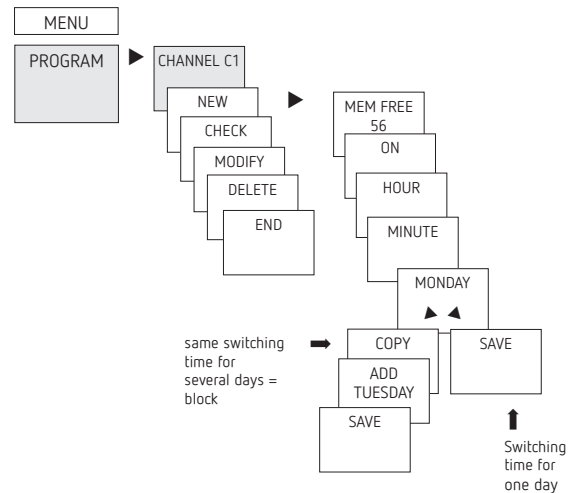
① Since the device does not have a battery, it must be connected to the power supply during start-up, so time and date can be set.



- Set language, date, time as well as summer/winter time (SU-WI)
- Press any button and display follows on screen (see figure)

5. Settings and functions

Set switching time



① A switching time always consists of a start time and an end time

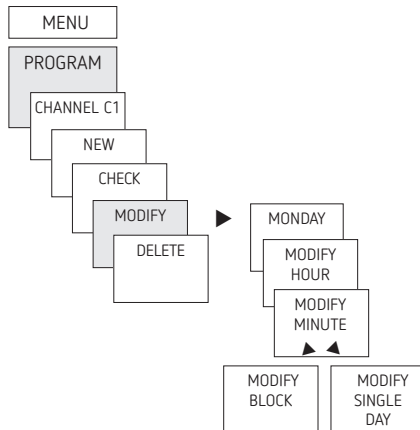
① There are 42 memory cells available

Example: Switch on sports hall lighting from Mon–Fri, 7:30 to 12:00 hrs

- Press MENU
- Select PROGRAM and press OK to confirm
- Select CHANNEL C1 or C2, confirm with OK
- Select NEW and press OK to confirm
- Select ON (for turn-on time) or OFF (for turn-off time), confirm with OK
- Set required turn-on time (Mo–Fr, 7:30), confirm with OK
- Select COPY, confirm with OK
- ADD TUESDAY is displayed, confirm by pressing OK and also confirm the days We, Th, Fr by pressing OK.
- Continue with ► until SAVE is displayed.
- Confirm by pressing OK.

Repeat all steps for the turn-off time, however instead of selecting ON with ► select OFF and enter 12:00 for hour and minute.

Change switching times

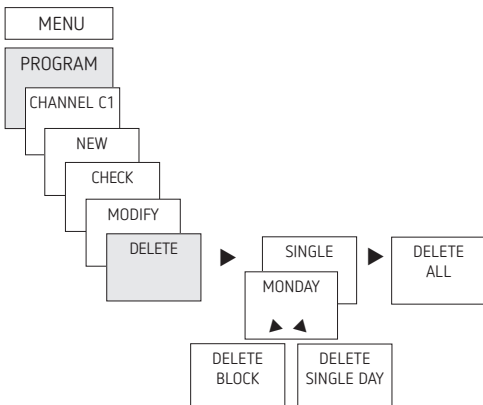


① You can either change or delete a block, i.e. a switching time copied for several days (e.g. Mon-Fri) or a single switching time

Change individual switching times

- Press MENU
- Select PROGRAM and press OK to confirm
- Select CHANNEL C1 or C2, confirm with OK
- Select MODIFY, confirm by pressing OK
- Select day, confirm with OK
- MODIFY HOUR, use the + or – buttons to change hour and minute and confirm with OK.
- To change several switching times, select MODIFY BLOCK, confirm with OK

Delete switching program



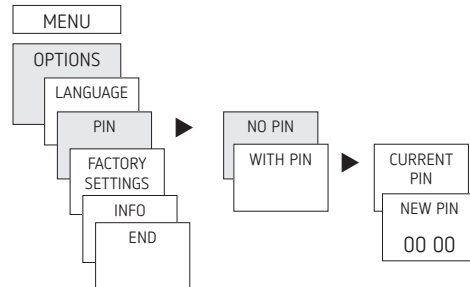
① You can either delete a block, i.e. a switching time copied for several days (e.g. Mon-Fri) or a single switching time

- Press MENU
- Select PROGRAM and confirm with OK
- Select CHANNEL C1 or C2, confirm with OK
- Select DELETE, confirm with OK
- INDIVIDUAL is displayed (with ► DELETE ALL), confirm with OK
- MONDAY is displayed, confirm with OK
- Select DELETE BLOCK, confirm with OK
- With ► DELETE MONDAY etc. individual days can also be cleared.

Activating PIN code

The PIN code is set in OPTIONS via the menu.

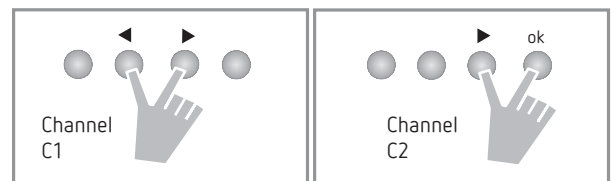
- ① If you have forgotten your PIN, call the Theben Hotline.
- ① Have the serial number ready.



Setting manual or permanent switching

Manual or permanent switching can be set via the automatic screen by button combination (see picture).

- Manual control:
Reversing the channel status to the next automatic or programmed switching.
- Permanent switching:
As long as a permanent switching (on or off) is activated, the programmed switching times are ineffective



Activating manual control

- Briefly press both buttons simultaneously

Activating permanent switching

- Press both buttons simultaneously for 2 seconds

Cancelling manual/permanent switching

- Press both buttons simultaneously

Resetting the time switch

- Press the 4 buttons simultaneously
→ You can choose between KEEP PROGRAM and DELETE PROGRAM

6. Technical data

Operating voltage:	230 V AC +10 % / -15 %
Frequency:	50-60 Hz (6010130), 50 Hz (6020130)
Standby:	0,55 W (6010130), 0,8 W (6020130)
Max switching capacity:	16 A (at 250 V, $\cos \varphi = 1$)
Switching capacity:	2 A (at 250 V, $\cos \varphi = 0,6$)
Min. switching capacity:	10 mA/230 V AC 100mA/24 V AC/DC
Switch output:	switching of any phase is permitted
Shortest switching time:	1 min
Switching accuracy:	accurate to the second
Protection rating:	IP 20 in accordance with EN 60529
Protection class:	II in accordance with EN 60730-1 subject to designated installation
Operating temperature:	-30 °C ... +55 °C 6020130: > 50 °C (10 A)
Power reserve:	48 hours, rechargeable
Time accuracy (typical):	$\pm 0,5$ s/day (25 °C)
Rated impulse withstand voltage:	4 kV
Pollution degree:	2
Software:	class A
Contact:	NO contact
Glow lamp load:	2600 W
Halogen lamp load:	2600 W
Fluorescent lamp load: uncorrected:	2600 VA
Series corrected:	2600 VA
parallel-corrected:	650 VA (72 μ F)
Compact fluorescent tubes (EVG):	600 W
LED lamps (< 2 W):	30 W
LED lamps (> 2 W):	300 W

ⓘ The time switch display is only fully functional at temperatures from +5 °C - +55 °C.