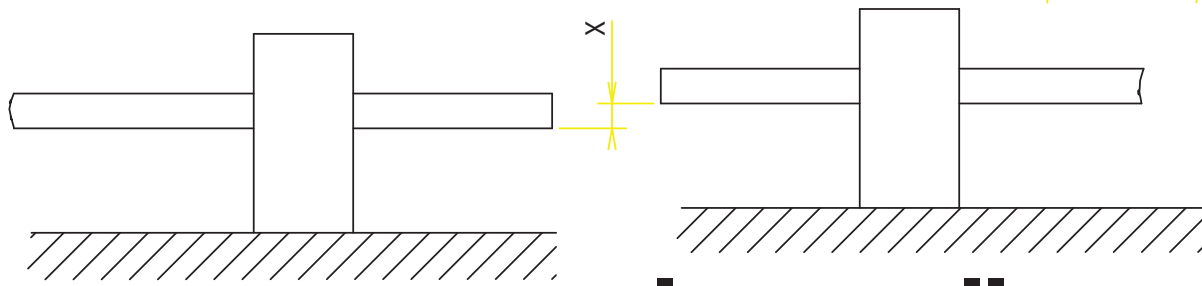
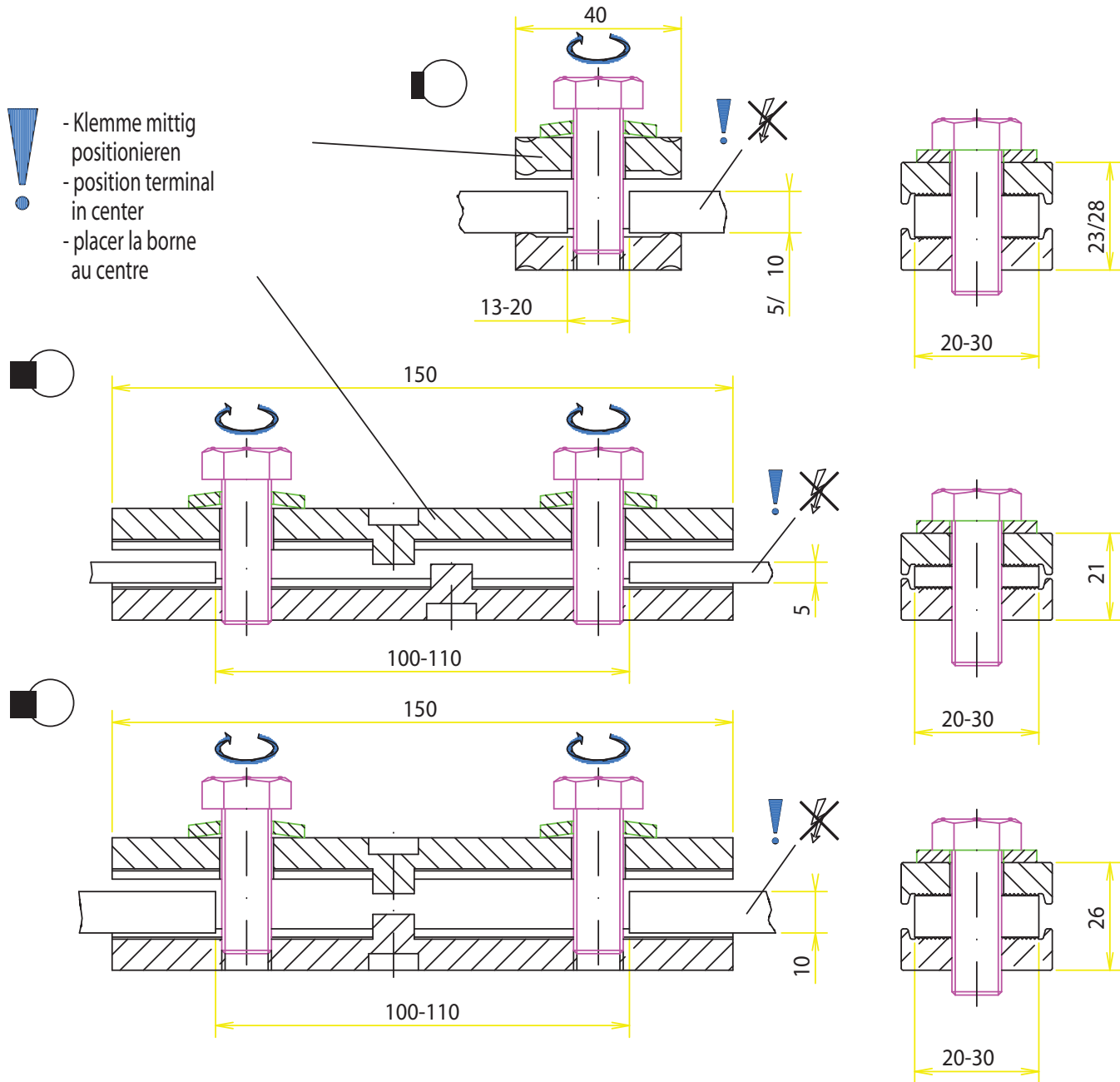


Verbindungsklemmen bis 630A
 Connecting terminals up to 630A
 Bornes de raccordement jusqu'a 630A

-Anzugsdrehmoment 30Nm
 -tightening torque 30Nm/270lb.in.
 -couple de serrage 30Nm

Montage - Assembling - Montage

- Klemme mittig positionieren
- position terminal in center
- placer la borne au centre



- max. Schienenversatz
- maximum mismatch of busbars
- déplacement maximum des barres

X

< 2mm

< 5mm