

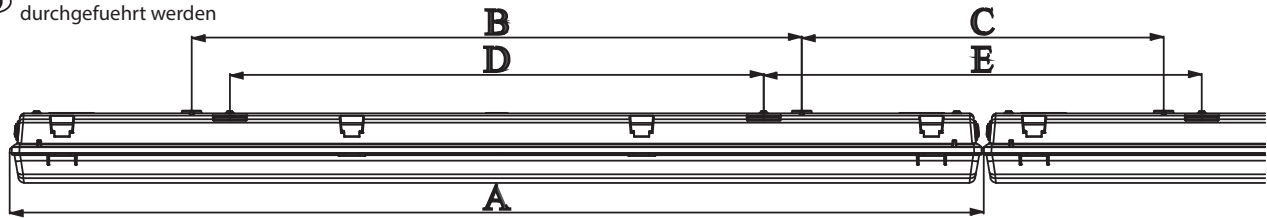


Installation instructions / Montageanweisung

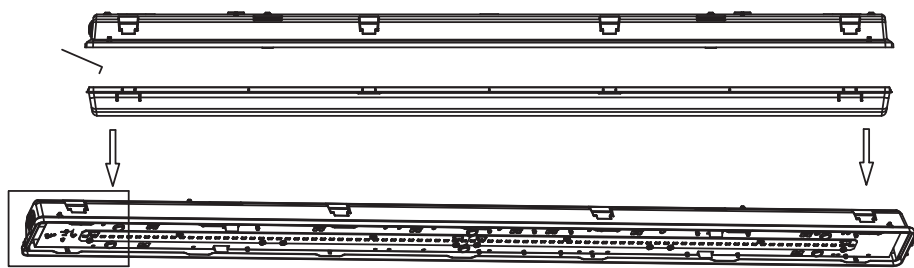
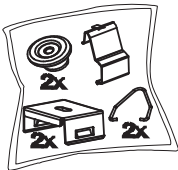
	A	B	C	D	E
LVB0001	669	435	252	360	307
LVB0002	1277	800	475	700	575
LVB0003	1577	1100	475	1000	575
LVB0004	1277	800	476	700	575
LVB0005	1577	1100	476	1000	575

GB The installation has to be carried out by an electrician or by any similarly qualified person

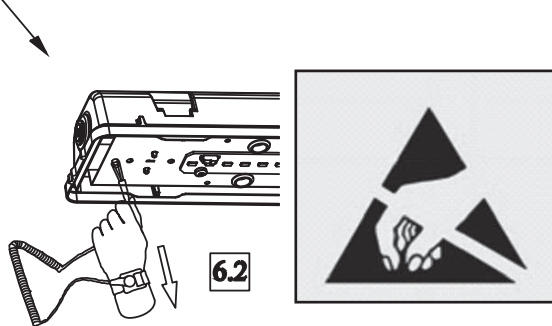
D Die Installation muss durch eine Elektrofachkraft durchgeführt werden



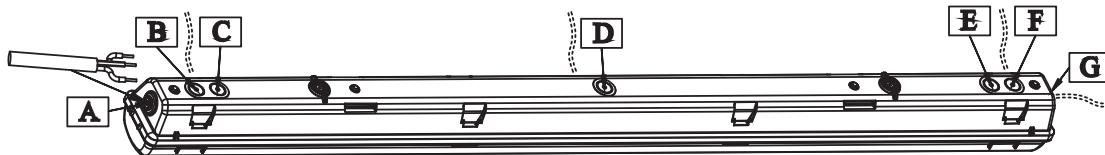
1



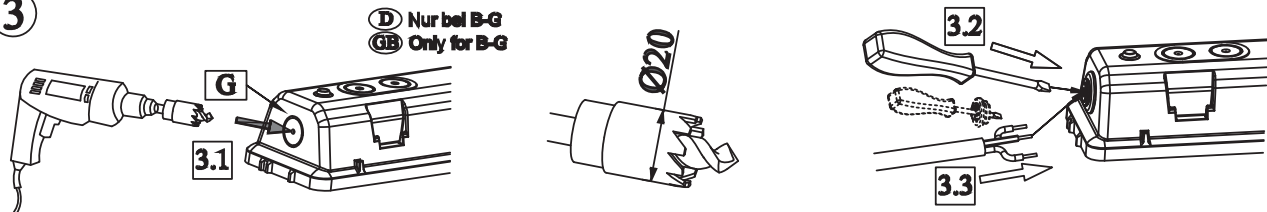
L=669mm / 6 x
L=1277mm / 8 x
L=1577mm / 10 x



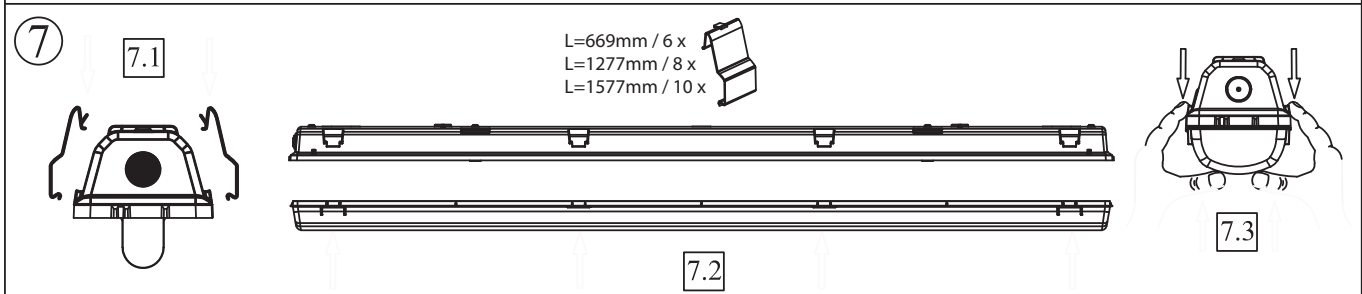
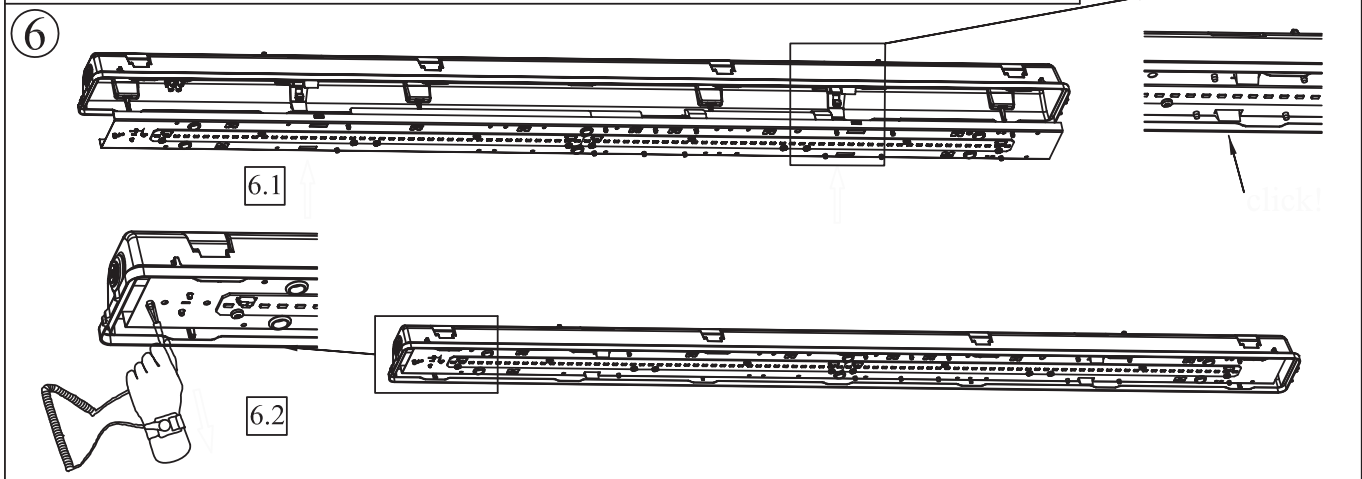
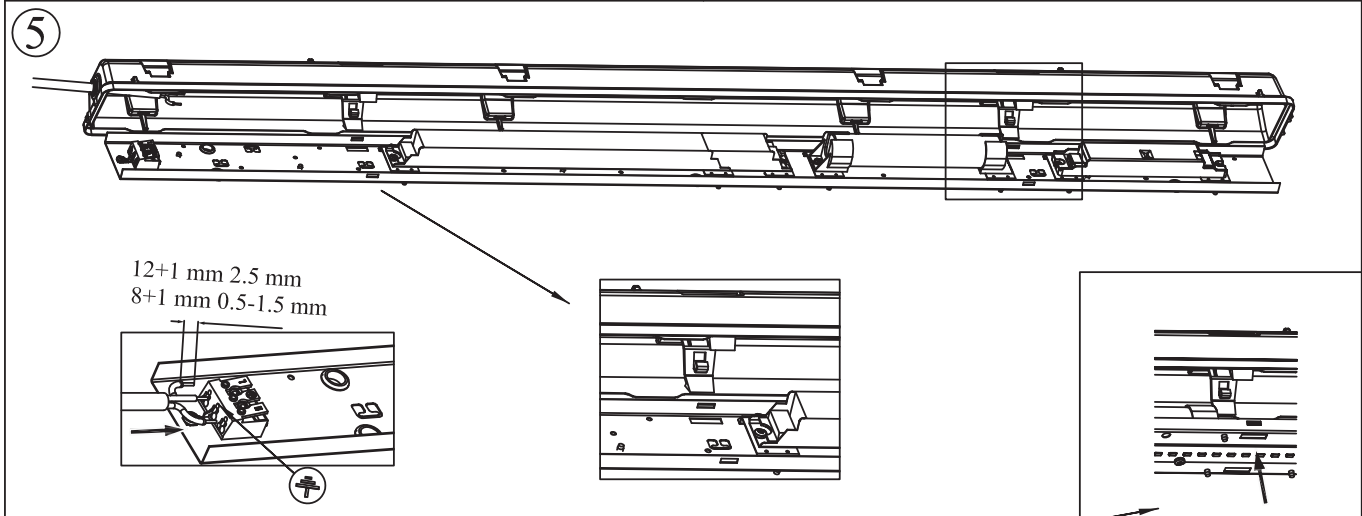
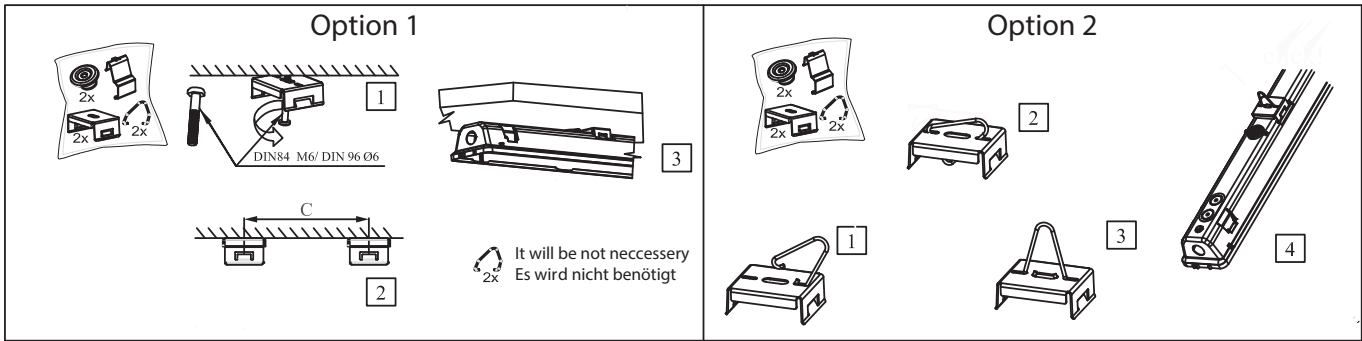
2



3



D Nur bei B-G
GB Only for B-G



Materialhinweis
Chemische Einflüsse durch Kontakt oder durch in der Atmosphäre schwebende Stoffe und ungeeignete Reinigungsmethoden können zu einer Beschädigung der Leuchte führen! Verwenden Sie keine laugen- und säurehaltigen Stoffe und keine Lösungsmittel oder Reinigungsmittel, welche Kunststoffe angreifen.

Luminaire materials
Aggressive chemicals, in direct contact with the luminaire or in the form of airborne substances can damage the fitting. So can unsuitable cleaning agents. Do not use any alkaline or acidic solution nor any solvents. Do not use any cleansing agents that are aggressive on plastics.

VORSICHT
Trennen Sie die Leuchte vom Netz, bevor Sie diese öffnen.
CAUTION
Disconnect supply before opening.

Schrack Technik GmbH
Seybelgasse 13
AT-1230 Vienna