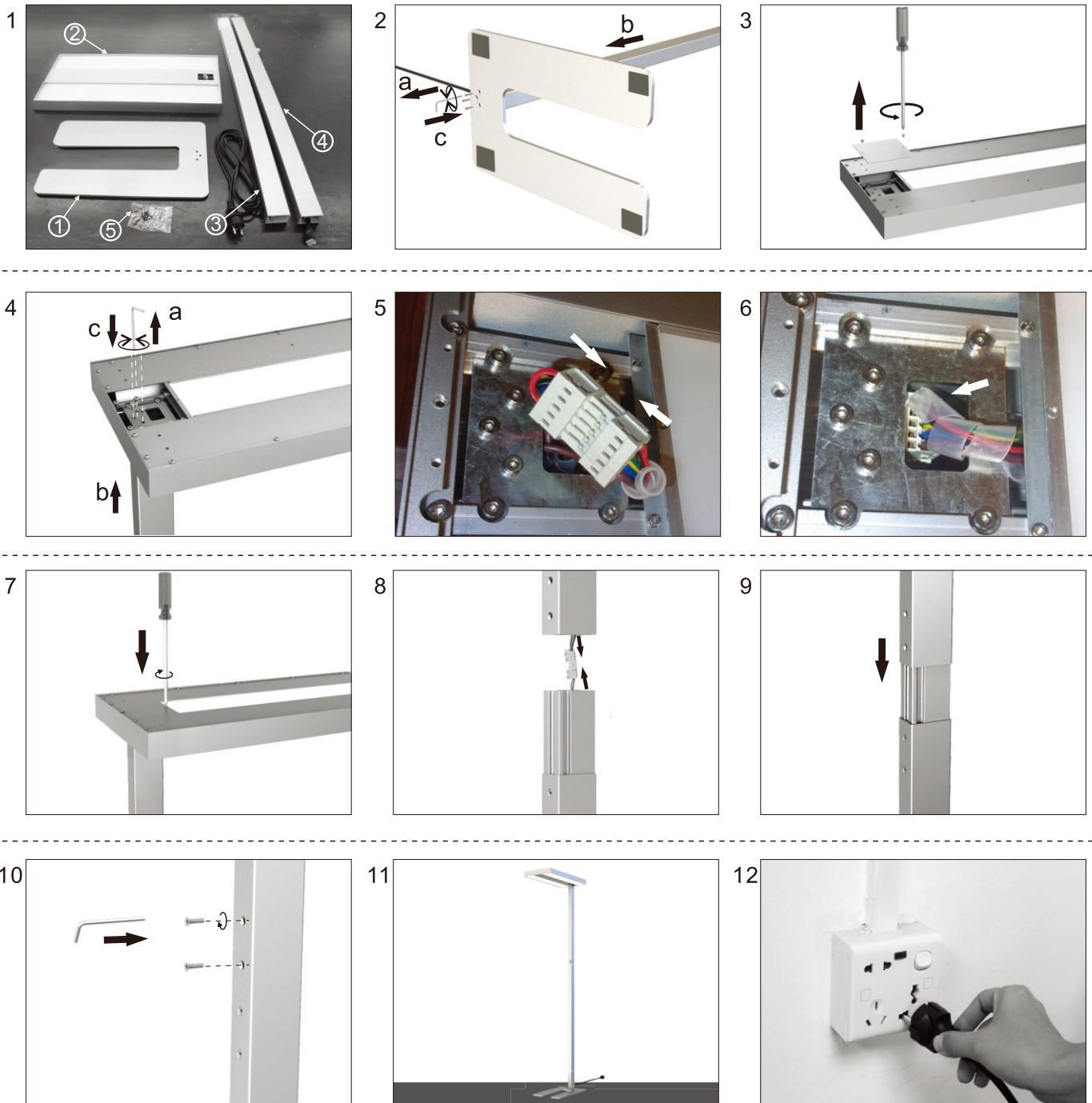


# Installation instruction

67117, 67118, 67117W, 67118W  
67331, 67332, 67331W, 67332W



## Switch:

Short press (> 50-600ms):	ON/OFF
Long press (> 600ms):	Dim up/down A change in the light value deactivates lighting regulation only temporarily. As soon as the luminaire has been automatically switched on again (motion detection) or manually switched off and on again, regulation is activated again.
2 x short press	The overwritten setpoint light value is stored (luminaire acknowledges by flashing twice). Function is lockable via the DSI programmer.

## Status LED on SENSOR:

STATUS	EVENT
-	Normal operation mode
Green flashing (2 s on, every 3 s)	Bright-out state active
One red flash	Motion detected
Two red flashes	Received infrared command
Three red flashes	Programmer communication running
Red flashing (1 s on, every 2 s)	PTM short circuit