

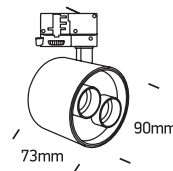
INSTALLATION MANUAL

65656BT

eco trackspot



DARK LIGHT

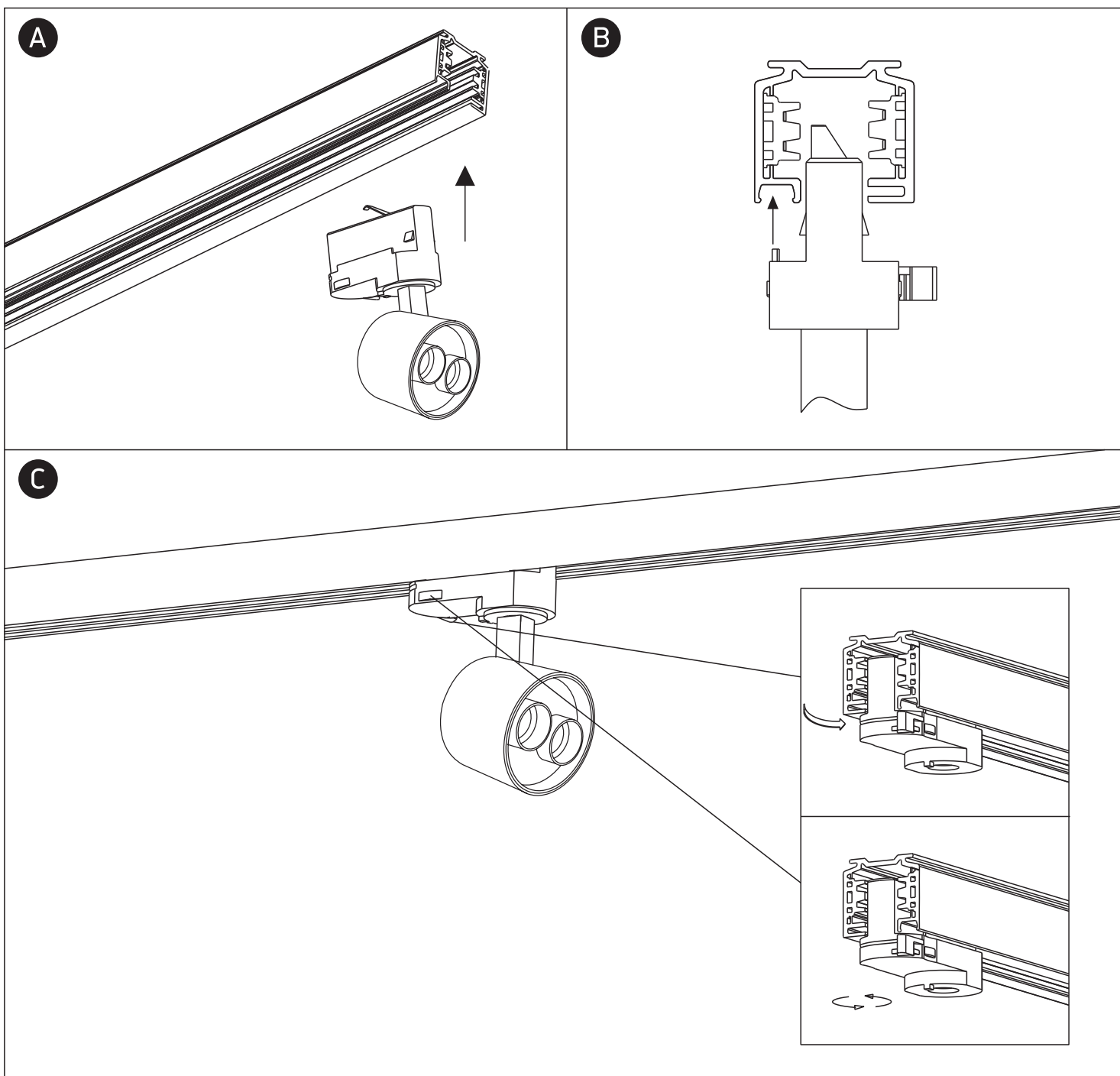


230V | SMD 5050 | 12W | IP20 | Aluminium | Adjustable

Complete with 350mA driver.

90 CRI

one
LIGHT



Warnings:

1. Make sure that the product is installed properly before connecting to electricity.
2. Do not cover the fitting.
3. Maintenance and installation should only be carried out by a professional electrician.