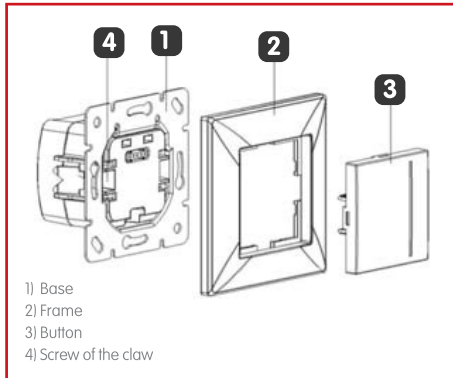


## USER MANUAL FOR RLC DIMMER EV103006








### ASSEMBLY

1-The cable connect should be done as shown in the connection diagram.  
2-Place the base (1) in the mounting box and tighten the screws of the claws(4) with an appropriate screwdriver.  
3-Place the frame (2) to the base and then place the button (3) to the frame (the terminals are fulfilled each other taht's placed button and base.

### TECHNICAL SPECIFICATIONS

- Class : RLC,2 Wire, 300W
- Load Type

R type load 	Incandescent Lighting Halogen/Dichroic 240V Lamps	Leading Edge/Forward Phase 
L type load 	Low Voltage Halogen/Dichroic Lighting with Iron-Core Transformers	Treatling Edge/Reverse Phase 
C type load 	Low Voltage Halogen/Dichroic Lighting with Electronic Transformers	

- Nominal voltage : 230 V ~ ± 10%, 50 Hz
- Max.Output Power : 300 W (23 °C± 2 °C)
- Min.Output Power : 60W

• **Calibration:** Dimmer first energized, the lamp will dim and turn off level.(max. 2 second) .Dimmer recognizes what is the load and adjust the load according to the shape of the switching. If the dimmer does not correctly complete the calibration, cable connection can be a problem or more load can be connected to the dimmer.

• **Over Current Protect:** In case of a brief over current protect of the load, the dimmer disconnects the connected loads and and re-connects them afterwards .In case of a permanent over current protect, the dimmer switches off completely. The supply voltage must be disconnected prior to remedying faults. After the fault has been remedied, the dimmer is again ready for operation

• **Over Load Protect:** The maximum connected load should not exceed 300W/300VA. The dimmer heats up during

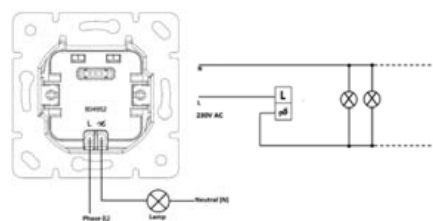
operation.When the temperature rises above the allowed limit (e.g. in case of overload), the RLC dimmer automatically goes off. When the temperature came back to the allowed limit, the dimmer works again. If the temperature rises above the allowed limit, the dimmer will goes off again. To resume its normal function, switch off the dimmer. If the thermal error persist, thermal switch will turn on and the dimmer will not work.

- **Certificates :** CE

### IMPORTANT INTRODUCTION

- Product should be used within 43 mm deep junction box.

### CONNECTION DIAGRAM



#### CAUTION

- The unit will heat up during operation.The specified rated power is designed for installation in a solid masonry wall.When installing the unit in a wall made of gas concrete ,wood or plasterboard,the maximum connected load must be reduced by 30% min.Otherwise the unit may be destroyed!
- Please clean the button ,cover and the frame of the products with dry or lightly damp cloth.Do never use chemicals like alcohol,cologne,detergent,etc.
- While having your house painted,please demount and store the cover and frames of yur switches.
- Alarm systems are not suitable for.
- Heaters,air conditioners and air turbulences caused by sudden temperature increases do not install near any of these devices is affected.