

# INSTALLATION MANUAL

10112BTR

**ecolight**

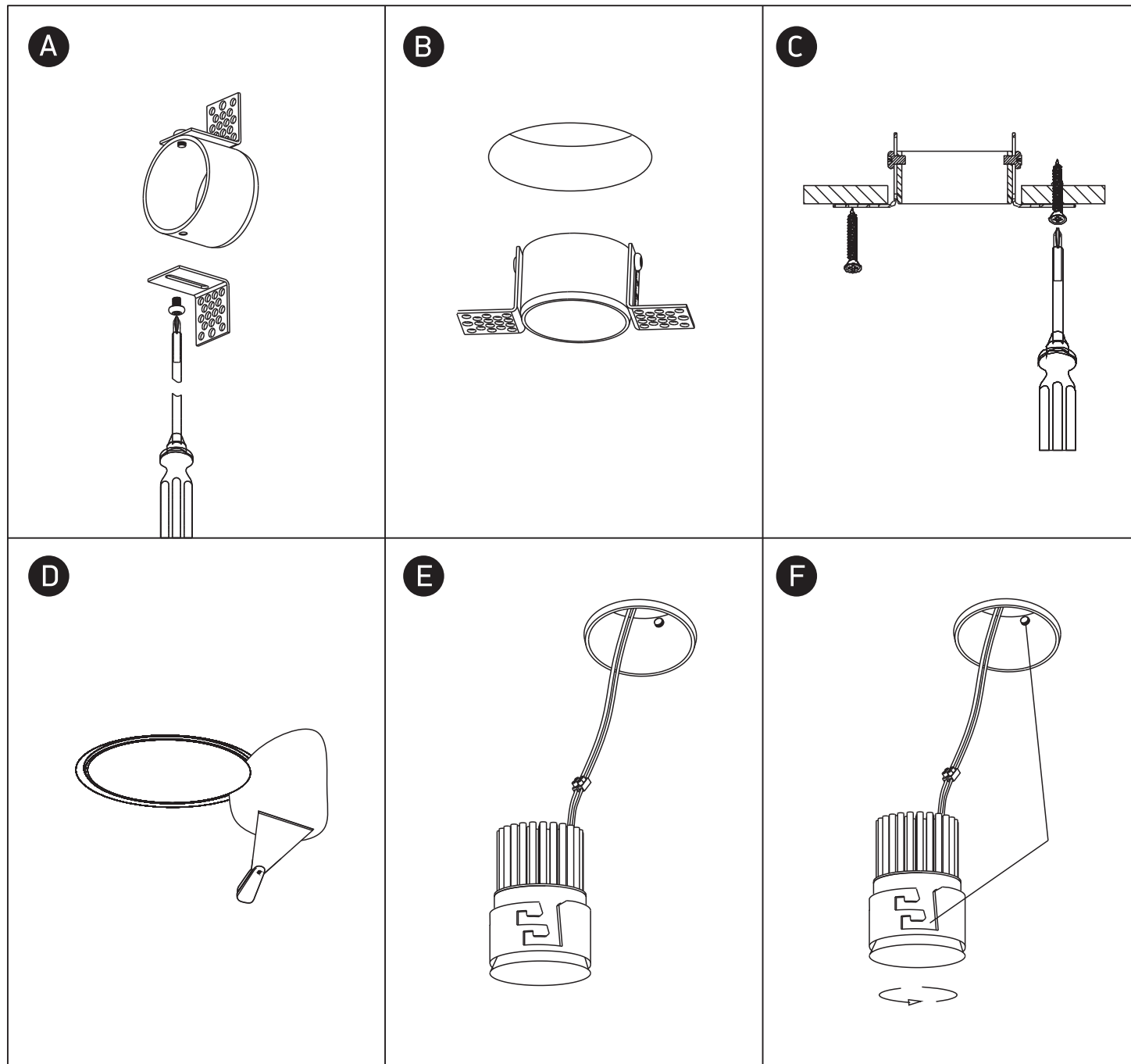
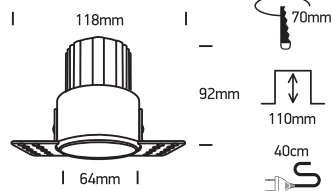


DARK LIGHT



700mA | 12W | IP20 | Trimless | Aluminium  
Requires 700mA driver.

90 CRI



## Warnings:

1. Make sure that the product is installed properly before connecting to electricity.
2. Do not cover the fitting.
3. Maintenance and installation should only be carried out by a professional electrician.