

Superkurzschlußschutz TYTAN II

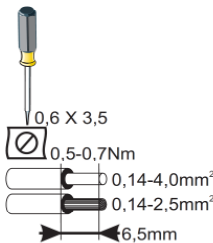
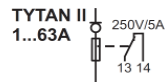
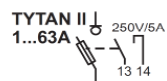
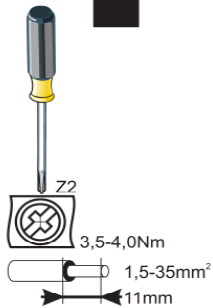
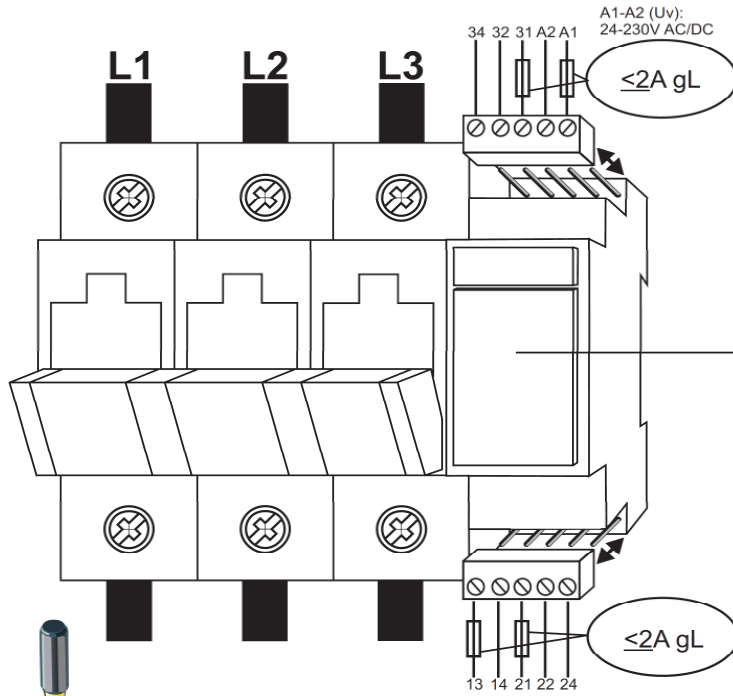
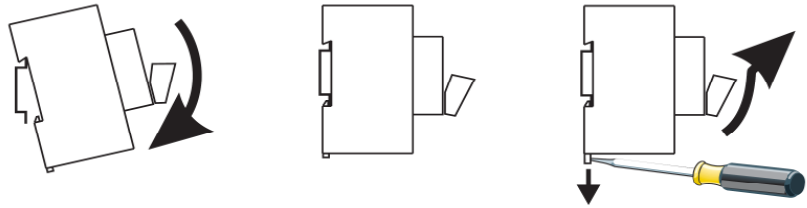
KOMPETENZ VERBINDET.



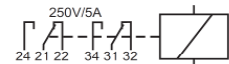
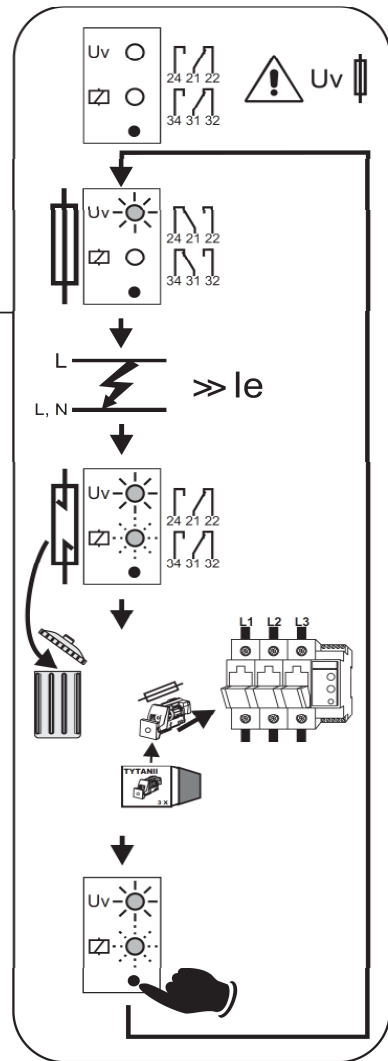
Montageanweisung
Assembly instructions
Instructions de montage

Lebensgefahr
Danger
Danger de mort

Montage nur durch Elektrofachkräfte
Installation by electricians only
Montage uniquement par un électricien



Ihr Ansprechpartner:



Satz-, Druckfehler und technische Änderungen vorbehalten / subject to technical changes and misprints

SCHRACK TECHNIK GMBH
Seybelgasse 13, A-1230 WIEN, TEL: +43(0)1/86685-0
EMAIL: info@schrack.com, INTERNET: www.Schrack.com

last update: 08/2010
ma_hs_10342