


55503470	DATA SHEET	
Valid from: 03.07.2018	SILVYN® LCS-M	

The SILVYN® LCS-M is a conduit fitting for swivel applications, which forms a liquid-tight and easy to install unit in conjunction with the protective conduit SILVYN® LCC-2 or LCCH-2 and has an continuous grounding.



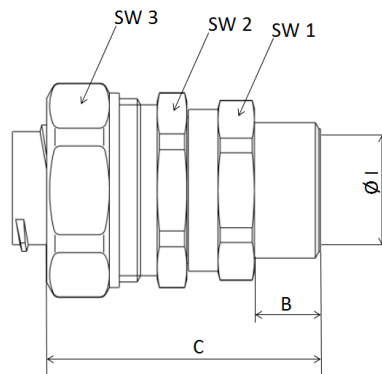
Material: Gland – Brass, nickel plated
Sealing – PA

Features: High tensile strength
Oil resistant
Corrosion resistant
UV resistant
Free of halogen, sulphur and phosphorous
Vibration and shock resistant

Temperature range: -50°C up to +135°C

Norm Reference: 
DIN EN 61386

Protection class: IP 65



Dimension table:

Part No.	Description	NW	Thread	Inner Diameter Ø I mm	Thread length B mm	Length C mm	SW 1	SW 2	SW 3
5550 3470	SILVYN LCS-M 16x1,5/1	12	M16x1,5	8,6	10,0	39,0	20	20	22
5550 3471	SILVYN LCS-M 16x1,5/2	16	M16x1,5	11,5	10,0	40,9	24	24	26
5550 3472	SILVYN LCS-M 20x1,5/1	16	M20x1,5	11,5	10,0	41,0	24	24	26
5550 3473	SILVYN LCS-M 20x1,5/2	20	M20x1,5	15,3	10,0	41,8	26	26	29
5550 3474	SILVYN LCS-M 25x1,5	25	M25x1,5	19,1	12,0	50,7	29	33	35
5550 3475	SILVYN LCS-M 32x1,5	32	M32x1,5	26,0	13,0	56,9	38	40	42

Suitable Conduit: SILVYN® LCC-2
SILVYN® LCCH-2

Accessories: SKINDICHT® SM-M

For more information please see our current catalogue. Please do not hesitate to contact our laboratory if there are any questions regarding resistance against aggressive agents and special oil.

Creator: M. Wegerer /PDP Released: DAMU1/PDP	Document: DB55503470EN Version: 01	Page 1 of 1
-------------------------------------------------	---------------------------------------	-------------