

10486100	DATA SHEET	
Valid from: 21.09.2021	EPIC® STA 6 SS / STA 6 FS	

Description

- The proven STA inserts for screw termination and solder termination.
- STA inserts - proven by the strong contact springs.



Male

General Characteristics

Series	STA 6
Version	Male (Article 10486100)/Spring(Article 10488100)
Number of Contacts	6
Termination Methods	Screw termination: 0.5 - 1.5 mm ²
Temperature Range	-40°C to +80°C

Mechanical Characteristics

Cycle of mechanical operation	100
-------------------------------	-----

Electrical Characteristics

Rated Voltage, IEC	24 V AC, 60 V DC
Rated Voltage, UL	48 V
Rated Current, IEC	10 A
Rated Current, UL	10 A
Contact Resistance	< 3 mOhm
Degree of Soiling	2

Materials and Surfaces

Contacts	Copper alloy, tinned
Insulating Body	PC
Flammability Class according to UL 94	V0


Approvals

UL-Approval, E-File-Number	E75770
----------------------------	--------

Standard

Safety Standard	IEC 61984, UL 1977
-----------------	--------------------

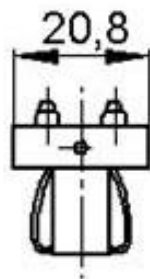
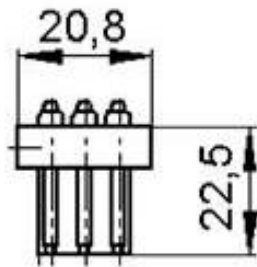
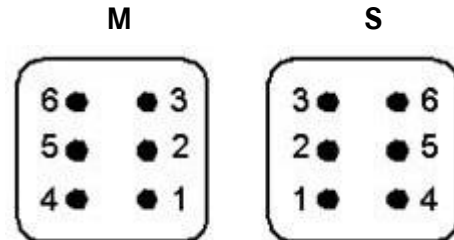
Creator: JOKR1/PDP Released: IVSE1/PDP	Document: DB10486100EN Version: 04	Page 1 of 2
---	---------------------------------------	-------------

10486100	DATA SHEET	
Valid from: 21.09.2021	EPIC® STA 6 SS / STA 6 FS	

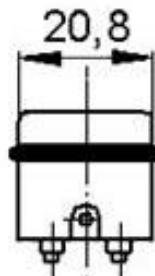
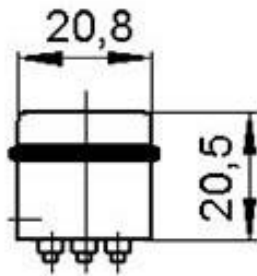
Technical Drawings



Spring



S



M



Industrial machinery and plant engineering

Application range

- Control systems
- Rack technology
- Electronic laboratory

Remark

Photographs are not to scale and do not represent detailed images of the respective products.

Creator: JOKR1/PDP Released: IVSE1/PDP	Document: DB10486100EN Version: 04	Page 2 of 2
---	---------------------------------------	-------------