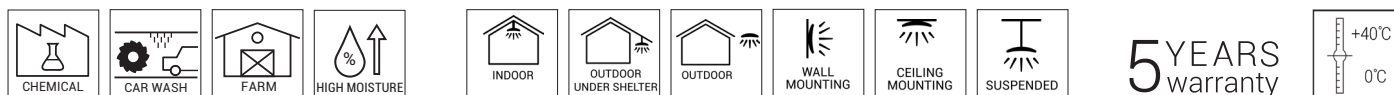
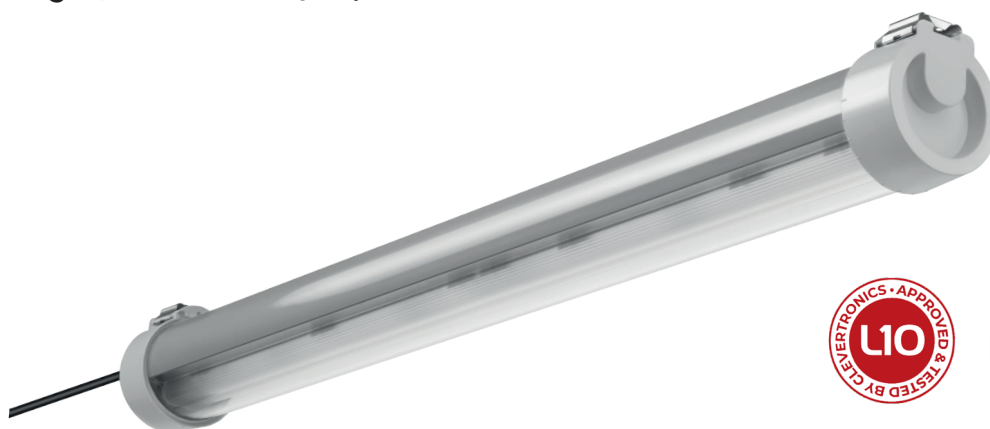


# STRONGERTUBE | G2 L10

Fit and forget, even with emergency kit



## Benefits

- Specific potting for a full tight sealing to avoid the penetration of gases and water.
- Safe against the corrosion of LED modules and electronic components
- High thickness PMMA resistant to chemicals and robust for a durable use in outdoor
- Internal emergency kit with a extended warranty of 7 years.
- Specific 316L stainless steel fixing brackets which allows luminaire rotation

## Characteristics



### Mechanical characteristics

Profile	PMMA
End caps	Acrylonitrile styrene acrylate (ASA)
Gasket	Polyurethane
Gear tray	White laquered steel plate
Cable entry	Cable gland 3m external cable included
Fixing clips	Specific stainless steel fixing brackets



Stainless steel fixing bracket

### Electrical characteristics

Connection	5 - pole screwless connector
Power factor	> 0.95 full load
THD	< 10% full load
Flicker factor	< 1%

### Functional characteristics

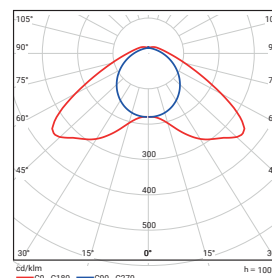
Lifetime	Up to L80 100.000 h
Fire protection	Flammability (UL94): HB Glow wire test (EN 60595-2-11): 650°C

Compliance



### Photometrical characteristics

SDCM	< 3
Photobiological risk	RG1



## STRONGERTUBE | G2 L10

### Description

FAMILY	VERSION	LUMINOUS FLUX (lm)	CRI + LIGHT COLOUR	DRIVER	PROFILE	CONNECTION	THROUGH WIRING
> STRONGERTUBE	> G2 L10	> 40: 4000 >65: 6500	> 840: CRI>80   4000K	> ET: non dimmable > ETDD: DALI	> PMMA	3 m cable included	

#### Special options under request

Ask our Sales Team for more details	> 2000 to 8000	> 830: CRI>80   4000K > 850: CRI>80   5000K >865: CRI>80   6500K >827-865: CRI>80   2700 K - 6500K	5x1,5 mm <sup>2</sup> 3x2,5 mm <sup>2</sup>
-------------------------------------	----------------	---	--

### Operational data

Description	Order number	Luminous flux (lm)	Luminous flux emergency (lm)	Power (W)	Efficiency (lm/W)	Colour temperature (K)	CRI	Temperature range
StrongerTube G2 L10 B 65-840 ET PMMA ZB	10254109	6500	350	43	150	4000	> 80	0°C - +40°C
StrongerTube G2 L10 B 65-840 ETDD PMMA ZB	10253420	6500	350	43	150	4000	> 80	0°C - +40°C

In emergency versions maximum power consumption increases in 4W during battery charging, which is approximately 5% of the time that luminaire is on. The rest of the time power consumption is as indicated.

### Dimensions and logistics

Description	X	Xm	Y	Z					
	mm	mm	mm	mm	L x W x H mm	Item	Pcs./Box	Box	Groupage Pcs./Euro pallet
StrongerTube G2 L10 B 65-840 ET PMMA ZB	1340	1205	112	112	1350 x 112 x 112	5.1	1	5.3	54
StrongerTube G2 L10 B 65-840 ETDD PMMA ZB	1340	1205	112	112	1350 x 112 x 112	5.1	1	5.3	54

Please check with our Back Office to confirm logistic data

