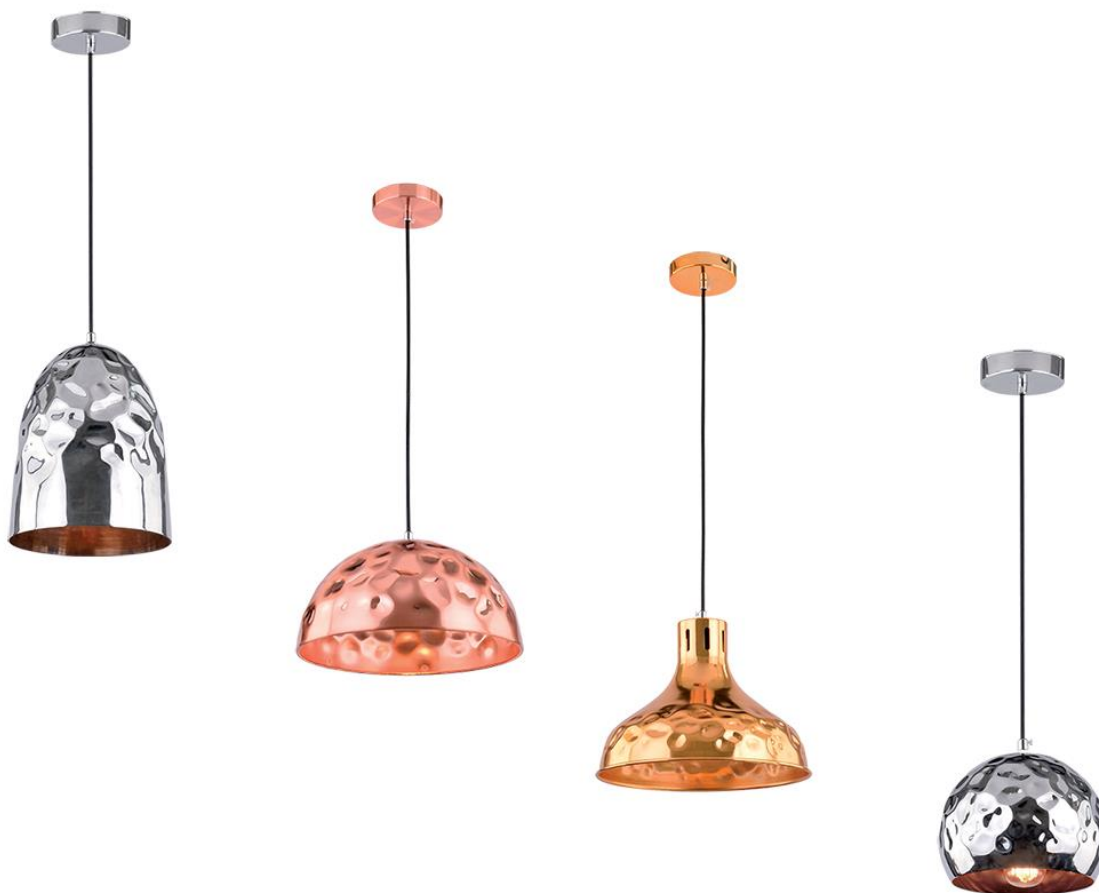


DECOR VINTAGE HAMMER



Technical data

Nominal voltage:	230V/ 50-60Hz
Lamp holder:	E27
Colour body:	Copper; Gold; Chrome
Material:	Metal

Features

- o *Resistant to shock and vibration stable body*
- o *Attractive design*
- o *Best effect with Vintage lamp*
- o *Environmentally Friendly – does not emit Mercury and Lead (by RoHS Directive)*
- o *No ultraviolet and infrared rays*
- o *Low heat emission*

Area of application

- o *General illumination*
- o *Domestic applications*
- o *Home interior*

Variants and Dimensions

<i>Description</i>	<i>Lamp holder</i>	<i>Colour body</i>	<i>Size (mm)</i>			<i>Catalogue number</i>
			<i>Diameter</i>	<i>Length</i>	<i>Height</i>	
Pendant	1xE27	Copper	300	-	-	955HAMMER1C/CU
Pendant	1xE27	Gold	290	-	220	955HAMMER1A/G
Pendant	1xE27	Chrome	180	-	-	955HAMMER1B/CH
Pendant	1xE27	Chrome	190	-	250	955HAMMER1D/CH

Barcodes

3800131200297	955HAMMER1A/G
3800131200310	955HAMMER1C/CU
3800131200303	955HAMMER1B/CH
3800131200327	955HAMMER1D/CH

Energy efficiency

E
ELMARK
lighting

955HAMMER1D/CH

This luminaire is compatible with bulbs of the energy classes:

A++
A+
A
B
C
D
E

874/2012

Standards

- EN 55015 • EN 60598-1 • EN 60598-2-1 • EN 61547 •

