

ELMARK[®]

The Brand of Electricity

AL EMERGENCY LIGHT



TECHNICAL SPECIFICATION

INDOOR-EMERGENCY LIGHTS

ELMARK[®]

The Brand of Electricity

Technical data:

- Rated voltage: 230V/ 50-60Hz
- Power: 1.5W;
- LED type: 8 pieces D5 LED
- Charge time: 8-12h
- Discharge time: 3h
- Battery: 1,2V/800mAh
- Conversation time: < 0.2s
- Frame: Aluminium alloy
- Long life: 20 000h
- Ambient temperature: -10+40°
- Protection against dust and moisture: IP21
- Mounting: Plasterboard

Features:

- Clearly indicates directions to emergency exits in panic situations
- Automatic switch-on in case of power failure
- Low power consumption

Area of application:

- Public buildings
- Commercial buildings
- Administrative buildings
- Residential buildings
- Banks
- Hospitals
- Schools

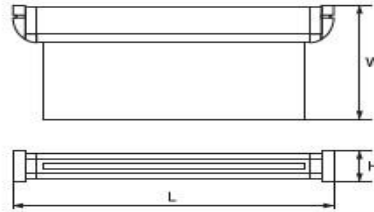
TECHNICAL SPECIFICATION

INDOOR-EMERGENCY LIGHTS

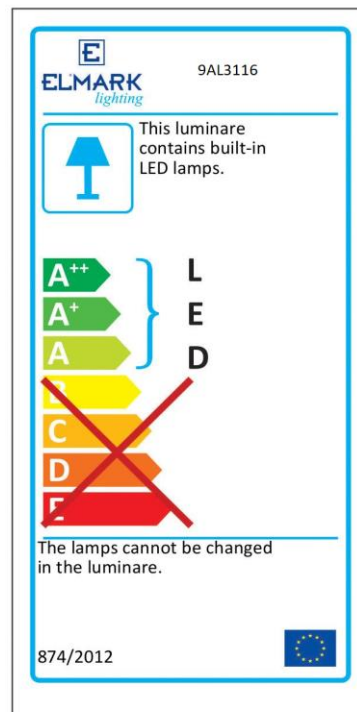
ELMARK[®]

The Brand of Electricity

Variants and Dimensions:



Model	LED type	Discharge time	Size (mm)			Catalogue number
			Length	Height	Width	
		(h)				
AL3116 PLASTERBOARD- DOWN ARROW	8 pieces D5 LED	3	380	50	210	9AL3116
AL3117 PLASTERBOARD-SIDE ARROW	8 pieces D5 LED	3	380	50	210	9AL3117



EN 55015 • EN 61000-3-2 • EN 61000-3-3 • EN 61547 • EN 60598-1 • EN 60598-2-22 • EN 61347-1 •

EN 61347-2-13 • EN 13032-4 • EN 50581:2012



www.elmarkholding.eu