

EL[®]MARK

The Brand of Electricity

RECESSED LED

FIXTURE

BRILLIANCE



TECHNICAL SPECIFICATION

INDOOR- LED FIXTURES

ELMARK[®]

The Brand of Electricity

Technical data:

- Nominal voltage: 230V/ 50-60Hz
- Power: 24W;
- LED driver: control gear, DC device – driver
- Light source: Sanan SMD2835
- Colour temperature: 6500K
- Colour body: White
- Long life: 30 000h
- Body: Alluminium
- Reflector: Polycarbonate (PC)
- Colour rendering index: Ra≥80
- Starting time: <0.5s
- Switch on/off: <20 000
- Protection against dust and moisture: IP20
- Easy installation due to handy clips
- Recessed mounted luminaire.

Features:

- Completely replace traditional lighting fixtures
- Pleasant and uniform light distribution
- Modern and elegant design
- Low power consumption
- Repeated switch on/off does not affect the lifespan
- Safety, low voltage operation
- Instant light with maximum luminous flux
- Environmentally friendly - no mercury and lead
- No ultraviolet and infrared rays

TECHNICAL SPECIFICATION

INDOOR- LED FIXTURES

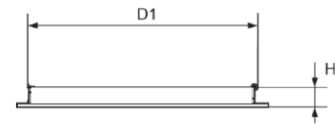
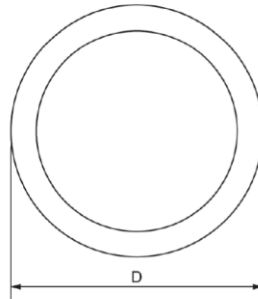
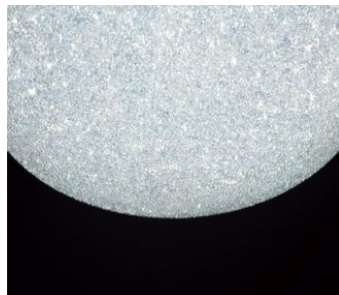
ELMARK[®]

The Brand of Electricity

Area of application:

- Residential buildings
- Commercial buildings
- Administrative buildings
- Banks
- Shopping malls

Variants and Dimensions:



Watt	Whole fixture lumens	Colour temp.	Colour body	IP code	Size (mm)			Catalogue number
					Diameter	Height	Diameter1	
(W)	(lm)	(K)						
24	1800	6500	White	IP20	220	20	205	95BRILLIANCE24

Barcodes:

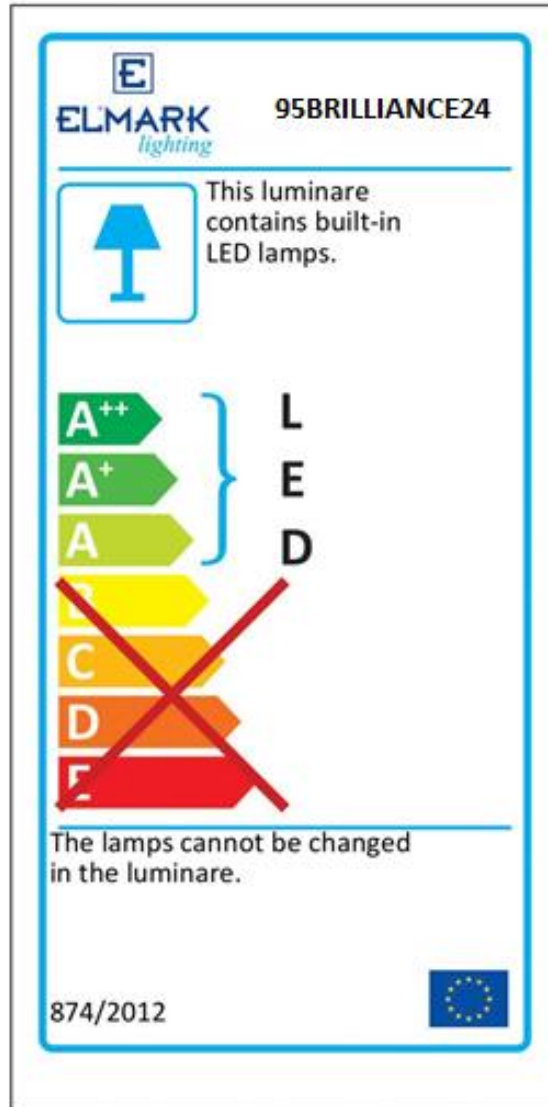
3800131214300	95BRILLIANCE24
---------------	----------------

TECHNICAL SPECIFICATION

INDOOR- LED FIXTURES

ELMARK[®]

The Brand of Electricity



EN 55015 • EN 61000-3-2 • EN 61000-3-3 • EN 61547 • EN 60598-1 • EN 60598-2-2 • EN 61347-1 • EN 61347-2-13 • EN 13032-4 • EN 50581:2012

CE RoHS COMPLIANT 

www.elmarkholding.eu