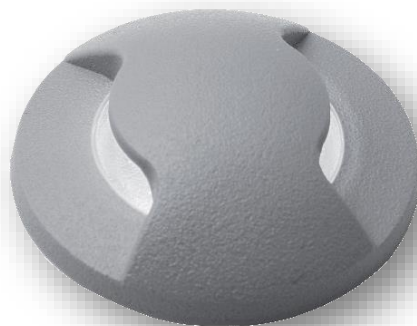


EL[®]MARK

The Brand of Electricity

TERESA LED IN-GROUND FIXTURE



GENERAL INFORMATION »

- ∴ Rated voltage: 100-240V/ 50-60Hz
- ∴ Power: 1.7W
- ∴ Colour temperature: 4000K
- ∴ Colour: Black; Grey
- ∴ Body: Resin with frosted diffuser
- ∴ UV resistant
- ∴ Lamp holder: G9
- ∴ Lamp included
- ∴ Insulation class II
- ∴ Protective low voltage class III
- ∴ Protection against dust and moisture: IP67

FEATURES »

- ∴ LED downlight lamp with no visible screws
- ∴ Made of shockproof resin material
- ∴ UV-rays stabilized, rust and corrosion-free.

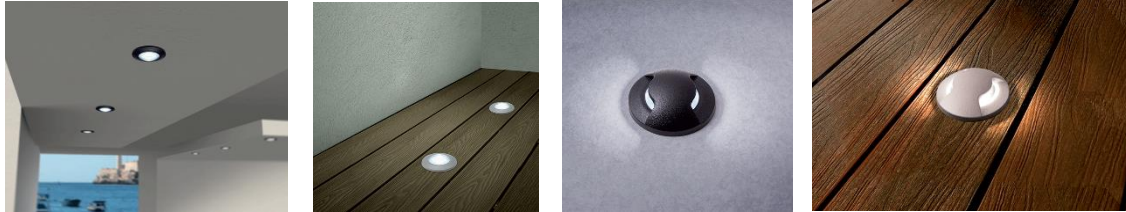
AREAS OF APPLICATION »

- ∴ Suitable for outdoor installations
- ∴ Ground mounting
- ∴ Mounting on the normal flammable base

TECHNICAL SPECIFICATION SHEET

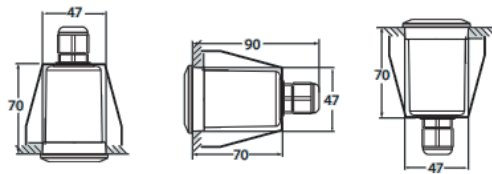
PRODUCT DETAILS »

Catalogue number	Watt (W)	Whole fixture lumens (lm)	Colour temp. (K)	Lamp holder	Colour body
96TERESA/BL	1.7	170	4000	G9	Black
96TERESA/GR	1.7	170	4000	G9	Grey
96TERESA2L/BL	1.7	170	4000	G9	Black
96TERESA2L/GR	1.7	170	4000	G9	Grey

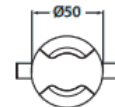
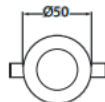
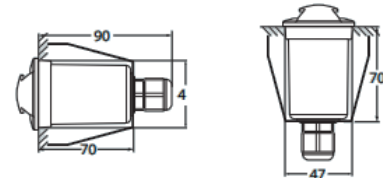


DIMENSIONS »

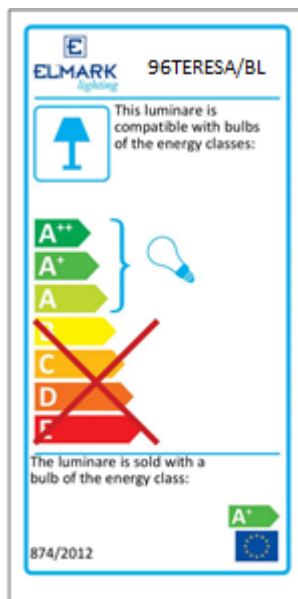
96TERESA



96TERESA2L



ADDITIONAL INFORMATION »



Catalogue number	Barcode	Packing /Box (pcs)
96TERESA/BL	8031874220029	1/75
96TERESA/GR	8031874220821	1/75
96TERESA2L/BL	8031874221019	1/75
96TERESA2L/GR	8031874221057	1/75

