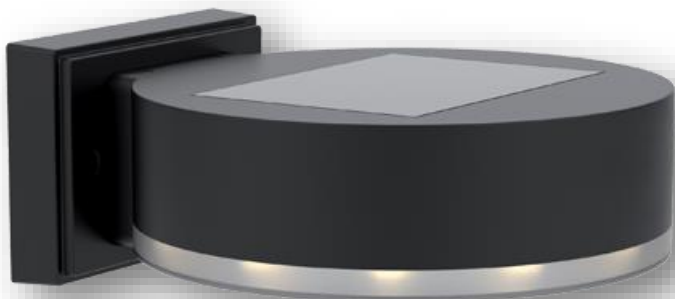


EL[®]MARK

The Brand of Electricity

SOLAR WALL & DRIVEWAY LIGHTS



GENERAL INFORMATION »

- ∴ Power: 0.8W; 0.3W; 0.24W
- ∴ Material: plastic, aluminium
- ∴ Colour body: black, grey
- ∴ Protection against dust and moisture: IP44

FEATURES »

- ∴ High quality, integrated flexible and outstanding design
- ∴ Durable & Waterproof
- ∴ Solar power supply and environment-friendly
- ∴ Energy-saving- ZERO electricity cost.
- ∴ Easy to install.
- ∴ Very flexible and functional- it can be used as wall light, flood light, driveway light, portable and work light etc.
- ∴ Applications: all the area inconvenient in electricity but full of sunshine, such as gardens, buildings, parking lot, entrance, courtyard, road, street, hotel etc



TECHNICAL SPECIFICATION SHEET

PRODUCT DETAILS »

Catalogue number	Power (W)	Whole fixtures lumens (lm)	Solar panel	Battery (V/mAh)	Working Time (h)	Material	Colour
98SOL23423	0.8	30	mono	LiFePO4/800mAh 18500 4.5V	8h	plastic	Black
98SOL23428	0.3	10	mono	Ni-Mh/ 900mAh 2V	8h	plastic	Black
98SOL41029	0.24	6	poly	Ni-Mh/ 600mAh	8h	aluminium	Grey

DIMENSIONS »

Catalogue number	Size (mm)		
	Length	Width	Height
98SOL23423	100	100	100
98SOL23428	145	145	55
98SOL41029	69	26	100

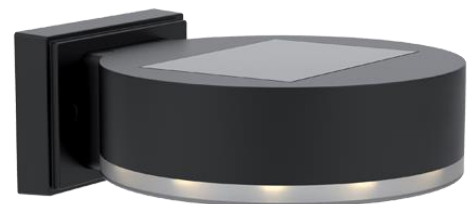
98SOL41029




98SOL23423




98SOL23428



ADDITIONAL INFORMATION »



98SOL41029



This luminaire contains built-in LED lamps.

A ⁺⁺	}	L E D
A ⁺		
A		
B		
C		
D		
E		

The lamps cannot be changed in the luminaire.

874/2012


Catalogue number	Barcode	Packing/Box (pcs)
98SOL23423	3800131231994	1/24
98SOL23428	3800131232007	1/24
98SOL41029	3800131232014	1/24

