

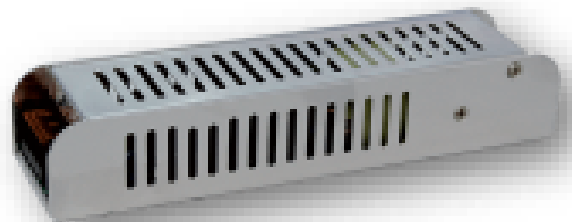
EL[®]MARK

The Brand of Electricity

DRIVERS FOR MAGNET

TRACK LIGHT

48V CONSTANT VOLTAGE



Technical data:

- Input voltage: 176-240V AC
- Output voltage: 48V DC
- Power options: 50W; 100W; 150W; 200W;
- Protection against dust and moisture: IP20

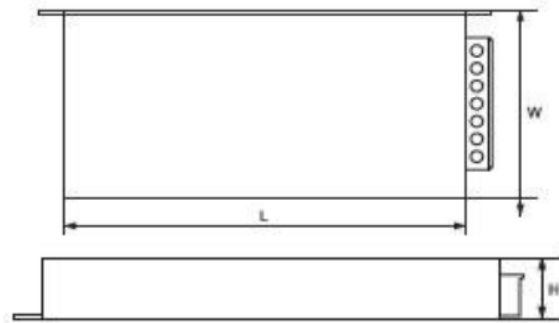
Features:

- Universal AC input / Full range
- Protection: Short circuit/Over load/Over voltage
- Cooling by free air convection
- High efficiency and reliability

Area of application:

- For LED magnet track light systems

Variants and Dimensions:



TECHNICAL SPECIFICATION

LAMPS AND COMPONENTS

ELMARK[®]

The Brand of Electricity



Model	Watt (W)	IP code	Voltage Uin / Uout	Size (mm)			Catalogue number
				Length	Width	Height	
SETDC5048	50	IP20	176-240V AC/48V DC	120	40	30	99SETDC5048IP20



Model	Watt (W)	IP code	Voltage Uin / Uout	Size (mm)			Catalogue number
				Length	Width	Height	
SETDC10048	100	IP20	176-240V AC/48V DC	160	40	32	99SETDC10048IP20



Model	Watt (W)	IP code	Voltage Uin / Uout	Size (mm)			Catalogue number
				Length	Width	Height	
SETDC15048	150	IP20	176-240V AC/48V DC	188	45	35	99SETDC15048IP20

TECHNICAL SPECIFICATION

LAMPS AND COMPONENTS

ELMARK[®]

The Brand of Electricity



Model	Watt (W)	IP code	Voltage Uin / Uout	Size (mm)			Catalogue number
				Length	Width	Height	
SETDC20048	200	IP20	176-240V AC/48V DC	200	60	40	99SETDC20048IP20

Additional information:

Catalogue number	Barcodes	Packing/Box (pcs)
99SETDC5048IP20	3800131237132	1/100
99SETDC10048IP20	3800131237149	1/60
99SETDC15048IP20	3800131237156	1/50
99SETDC20048IP20	3800131237163	1/36

