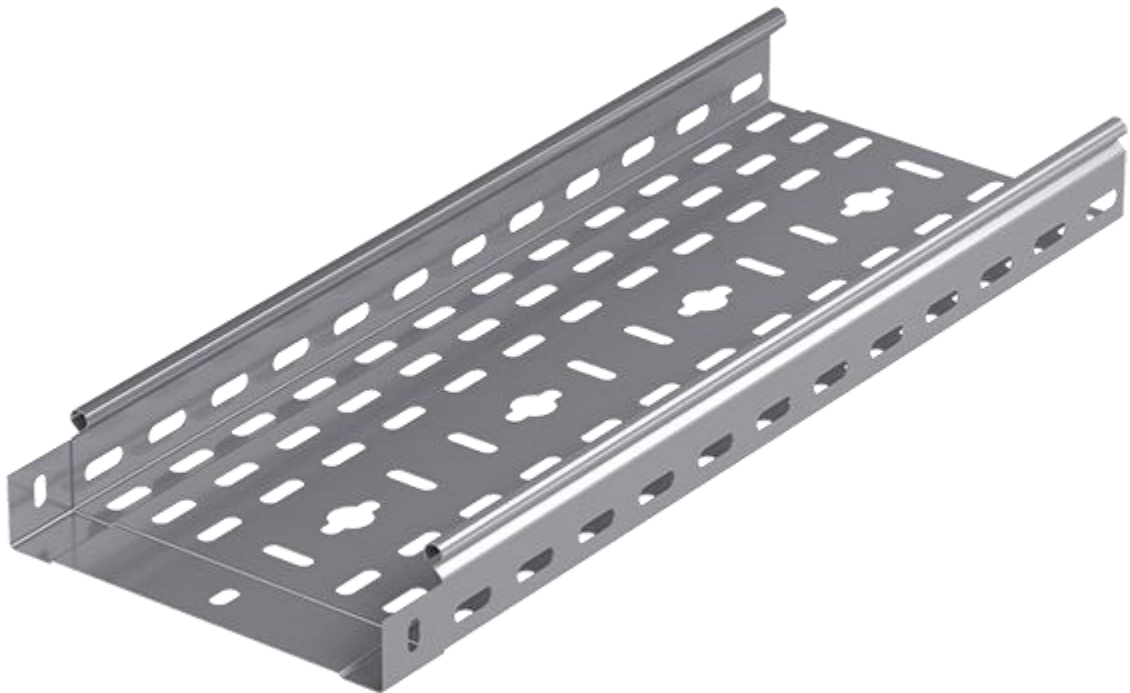


EL[®]MARK

The Brand of Electricity

**METAL CABLE TRAYS AND
ACCESSORIES**



TECHNICAL SPECIFICATION

CABLE SUPPORT SYSTEMS

ELMARK

The Brand of Electricity

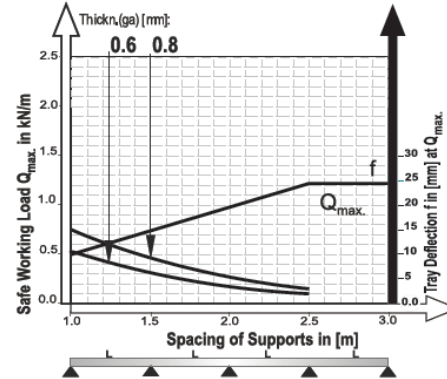
Description:

The universal cable support systems are used for construction of cable link in closed production premises for direct mounting on even vertical surfaces. They are perforated metal grates and accessories with standard lengths and sizes. They allow quick construction of cable systems with many angles and derivations.

Mounting:

Horizontally or vertically to a flat surface

Hanging installation



This diagram comply with IEC 61537 with connection to 1/5 of the span and the end span = 0,8x the span
 Q = max. admissible load (kg/m)
 L = support distance (m)
 f = Deflection (mm) / Max. deflection = $L/100$
 Safety co-efficient = 1.5

Variants:

∴ Cable tray



Type	Size (mm)	Thickness (mm)	Length (mm)	Packing/Box (pcs)	Catalogue number
CT1 UT CABLE TRAY	40x50	0,6	2500	1	56050825U
CT1 UT CABLE TRAY	40x100	0,6	2500	1	56100825U
CT1 UT CABLE TRAY	40x150	0,7	2500	1	56150825U
CT1 UT CABLE TRAY	40x200	0,7	2500	1	56200825U
CT1 UT CABLE TRAY	40x300	0,8	2500	1	56300825U
CT1 UT CABLE TRAY	60x200	0,8	2500	1	56200826U

* For joining cable tray section together use screw SET M8 with catalogue number: **568SET** or M6 SET with catalogue number **566SET**. Recommended quantities of bolt and nut sets for cable trays connection are: 2 sets for 50mm cable trays and 3 sets for everyone else.

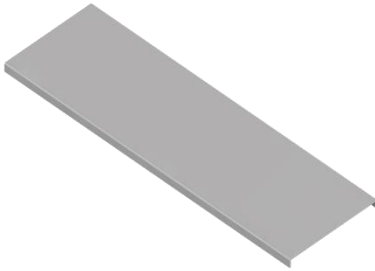
TECHNICAL SPECIFICATION

CABLE SUPPORT SYSTEMS

ELMARK[®]

The Brand of Electricity

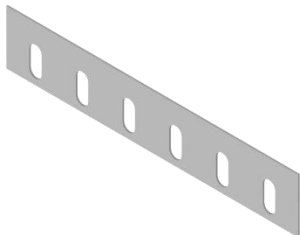
∴ Cable tray cover



Type	Size (mm)	Thickness	Length (mm)	Packing/Box (pcs)	Catalogue number
CT1 CABLE TRAY COVER	15x50	0,6	2500	1	56050825C
CT1 CABLE TRAY COVER	15x100	0,6	2500	1	56100825C
CT1 CABLE TRAY COVER	15x150	0,6	2500	1	56150825C
CT1 CABLE TRAY COVER	15x200	0,6	2500	1	56200825C
CT1 CABLE TRAY COVER	15x300	0,7	2500	1	56300825C

* For joining cable covers section together use screw SET M8 with catalogue number: **568SET** or M6 SET with catalogue number **566SET**. Recommended quantities of bolt and nut sets for cable trays connection are: 2 sets for 50mm cable trays and 3 sets for everyone else.

∴ Coupler for trays



Type	Size (mm)	Thickness (mm)	Length (mm)	Packing/Box (pcs)	Catalogue number
CT1 COUPLER FOR TRAYS WITH THE SAME SIZE	40	1,2	175	1	56250C

* To install 2 trays use 2pcs 56250C and 8 SETs of bolt and nuts with catalogue numbers: 566SET or 568SET

TECHNICAL SPECIFICATION

CABLE SUPPORT SYSTEMS

ELMARK[®]

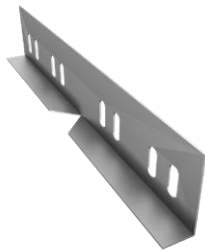
The Brand of Electricity

∴ Connectors



Type	Length (mm)	Height (mm)	Thickness (mm)	Packing/Box (pcs)	Catalogue number
CT1 ADJUSTABLE VERTICAL CONNECTOR SET (2pcs)	300	40	1,2	1	56300LC

* To install 2 trays use 1 SET 56300LC and 10 SETs of bolt and nuts with catalogue number: 566SET and 568SET



Type	Length (mm)	Height (mm)	Thickness (mm)	Packing/Box (pcs)	Catalogue number
CT1 ADJUSTABLE HORIZONTAL CONNECTOR	175	40	1,2	1	56301LC

* To install 2 trays use 2pcs 56301LC and 8 SETs of bolt and nuts with catalogue number: 566SET and 568SET

∴ Hanging support



Type	Length (mm)	Size (mm)	Thickness (mm)	Packing/Box (pcs)	Catalogue number
CT1 HANGING C RAIL	2000	27x18	1,2	1	5690106

* Slotted hole size: 8,5x20 mm | Round hole size: D-11 mm | Mounting: with threaded rod and nuts

TECHNICAL SPECIFICATION

CABLE SUPPORT SYSTEMS

ELMARK[®]

The Brand of Electricity

∴ Angles



Type	Height (mm)	Thickness (mm)	Packing/Box (pcs)	Catalogue number
CT1 ADD ON 90° HORIZONTAL CORNER BEND	40	1	1	5690101

* To install 2 trays use bolt and nuts with catalogue number: 566SET and 568SET



Type	Thickness	Length (mm)	Packing /Box (pcs)	Catalogue number
ANGLE 90D	0,8	100X100	1	5690100
ANGLE 90D	0,8	150X150	1	5690150
ANGLE 90D	0,8	200X200	1	5690200
ANGLE 90D	1	300X300	1	5690300

∴ Angle cover 90D



Type	Metric bolt diameters	Length (mm)	Packing/Box (pcs)	Catalogue number
ANGLE COVER 90D	1.5	100x100	1	5690100C
ANGLE COVER 90D	1.5	150x150	1	5690150C
ANGLE COVER 90D	1.5	200x200	1	5690200C
ANGLE COVER 90D	1.5	300x300	1	5690300C

TECHNICAL SPECIFICATION

CABLE SUPPORT SYSTEMS

ELMARK[®]

The Brand of Electricity

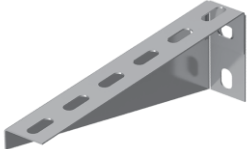
∴ Horizontal bend



Type	Width (mm)	Height (mm)	Thickness (mm)	Packing/Box (pcs)	Catalogue number
CT1 ADD ON TEE HORIZONTAL BEND	100	40	1	1	5690102
CT1 ADD ON TEE HORIZONTAL BEND	150	40	1	1	5690103
CT1 ADD ON TEE HORIZONTAL BEND	200	40	1	1	5690104
CT1 ADD ON TEE HORIZONTAL BEND	300	40	1,2	1	5690105

* To install 2 trays use bolt and nuts with catalogue number: 566SET and 568SET

∴ Wall/Ceiling brackets



Type	Tray width (mm)	Length (mm)	Packing/Box (pcs)	Catalogue number
CT1 WALL BRACKET	50	60	1	56050S
CT1 WALL BRACKET	100	110	1	56100S
CT1 WALL BRACKET	150	160	1	56150S
CT1 WALL BRACKET	200	210	1	56200S
CT1 WALL BRACKET	300	310	1	56300S

* Slotted hole size: 8,5x23 mm



Type	Length (mm)	Height (mm)	Packing/Box (pcs)	Catalogue number
CT1 OMEGA CEILING/WALL BRACKET	145	200	1	56100OB
CT1 OMEGA CEILING/WALL BRACKET	245	200	1	56200OB
CT1 OMEGA CEILING/WALL BRACKET	345	200	1	56300OB

TECHNICAL SPECIFICATION

CABLE SUPPORT SYSTEMS

ELMARK[®]

The Brand of Electricity

∴ Threaded hanging rod



Type	Thread	Length (mm)	Grade	Packing/ Box (pcs)	Catalogue number
THREADED HANGING ROD	M6	1000	4.8	100	M517079
THREADED HANGING ROD	M8	1000	4.8	50	M517080
THREADED HANGING ROD	M10	1000	4.8	40	M517078

* Application: Suitable for fixing skirting, stud battens to wall and long runs of shelf support

∴ Bolt and nuts



Type	Thread metric (mm)	Length (mm)	Packing/B ox (pcs)	Catalogue number
CT1 BOLT AND NUTS, SET	M6	15	1/500	566SET
CT1 BOLT AND NUTS, SET	M8	15	1/500	568SET



www.elmarkholding.eu