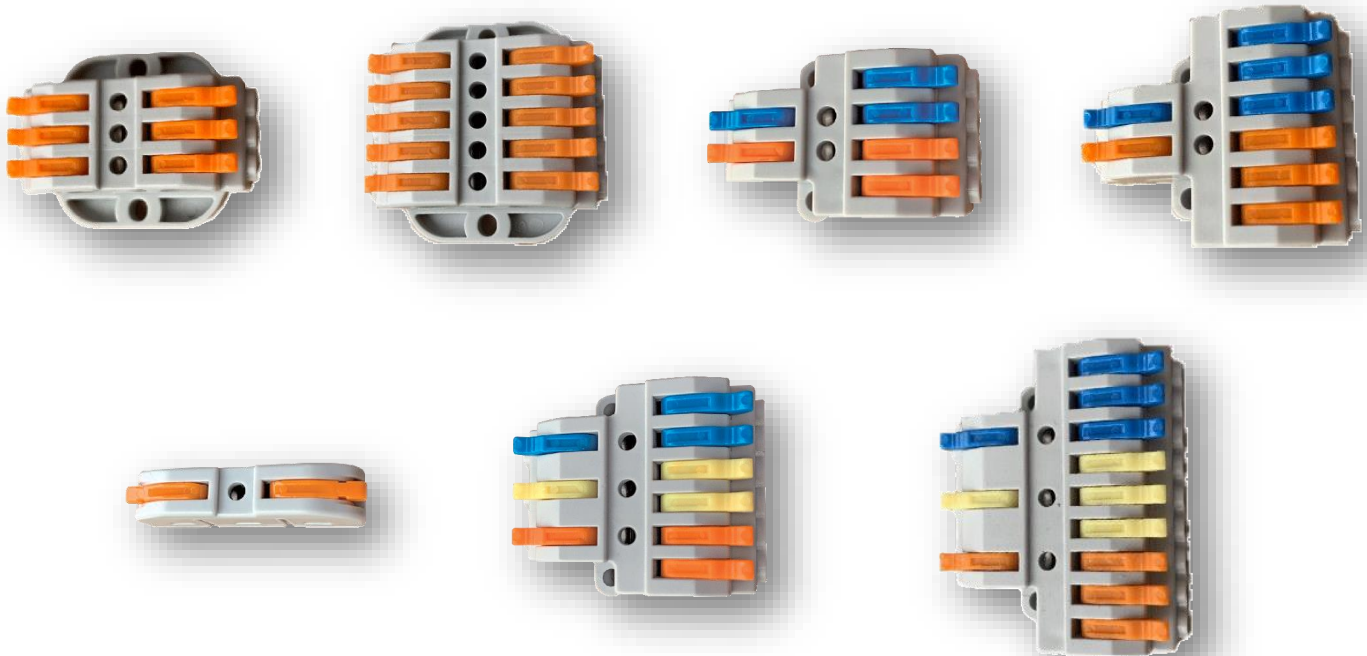


ELMARK[®]

The Brand of Electricity

QUICK CONNECTION TERMINAL BLOCKS

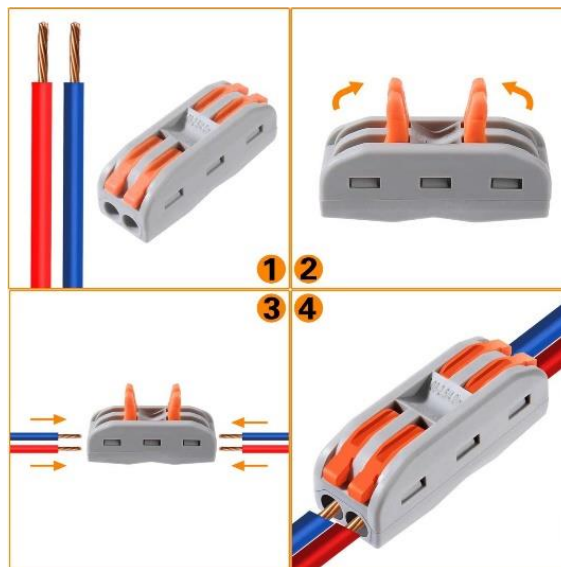


Product details:

- Rated voltage: 250V
- Rated current: 32A
- Type of wiring: Side-entry wiring
- Available in 1, 2, 3 and 5 poles
- Pieces in a terminal: 2, 4, 6, 8, 9, 10, 12
- Section of the conductor: 0,75mm²- 4mm²
- Fast and safe connections- plug in.
- A reusable connector
- Perfect for distribution applications
- Easily to operate without tool.

Installation:

- Open the clamping unit using the integrated orange lever actuator so that the lever engages and keeps the clamp in its opened position.
- The conductor can now be inserted, then the lever can be returned to its rest position, flush with the connector housing



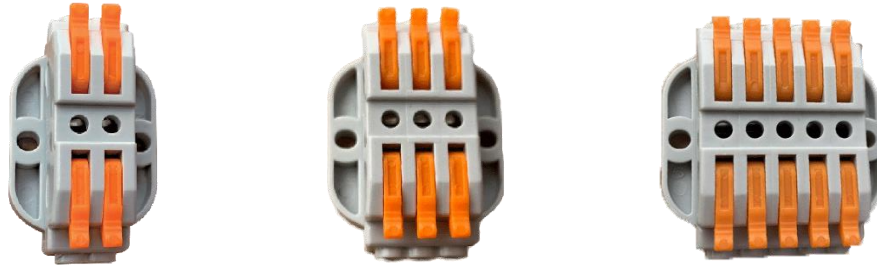
TECHNICAL SPECIFICATION

CABLE TERMINALS

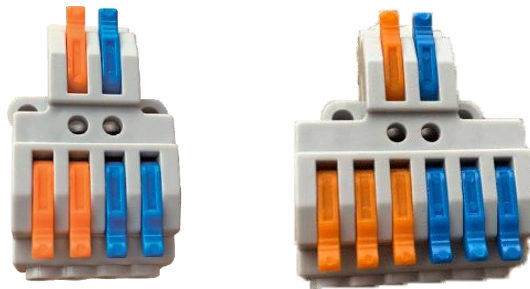
ELMARK[®]

The Brand of Electricity

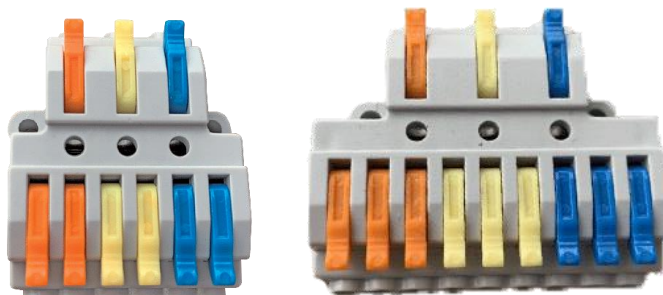
Variants:



Type	Pieces in a terminal	Section of the conductor (mm ²)	Rated current (A)	Rated voltage (V)	Catalogue number
2P- 2 in/ 2 out	4	0,75mm ² - 4mm ²	32	250	31026
3P- 3 in/ 3 out	6	0,75mm ² - 4mm ²	32	250	31027
5P- 5 in/ 5 out	10	0,75mm ² - 4mm ²	32	250	31028



Type	Pieces in a terminal	Section of the conductor (mm ²)	Rated current (A)	Rated voltage (V)	Catalogue number
2P- 2 in/ 4 out	6	0,75mm ² - 4mm ²	32	250	31029
2P- 2 in/ 6 out	8	0,75mm ² - 4mm ²	32	250	31030



Type	Pieces in a terminal	Section of the conductor (mm ²)	Rated current (A)	Rated voltage (V)	Catalogue number
3P- 3 in/ 6 out	9	0,75mm ² - 4mm ²	32	250	31034
3P- 3 in/ 9 out	12	0,75mm ² - 4mm ²	32	250	31036

TECHNICAL SPECIFICATION

CABLE TERMINALS

ELMARK[®]

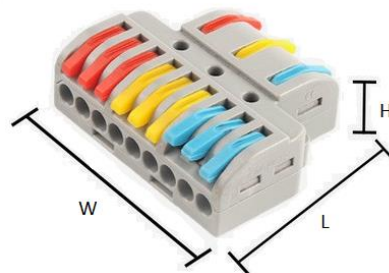
The Brand of Electricity

MODULE TERMINAL BLOCK FOR QUICK CABLE CONNECTION



Type	Pieces in a terminal	Section of the conductor (mm ²)	Rated current (A)	Rated voltage (V)	Catalogue number
1P- 1 in/ 1 out	2	0,75mm ² - 4mm ²	32	250	31037

Dimensions and additional information:



Type	Dimensions (mm)			Packing (pcs)	Catalogue number	Barcodes
	L	W	H			
2P- 2 in/ 2 out	41.4	25.5	14.4	1/50	31026	3800131235787
3P- 3 in/ 3 out	41.4	30.5	14.4	1/50	31027	3800131235794
5P- 5 in/ 5 out	41.4	40.5	14.4	1/50	31028	3800131235800
2P- 2 in/ 4 out	41.4	25.9	14.55	1/50	31029	3800131235817
2P- 2 in/ 6 out	41.4	35.9	14.55	1/50	31030	3800131235824
3P- 3 in/ 6 out	41.4	35.9	14.6	1/50	31034	3800131235831
3P- 3 in/ 9 out	41.4	48.5	14.6	1/50	31036	3800131235848
1P- 1 in/ 1 out	39.3	8.5	14.5	1/100	31037	3800131235855

