

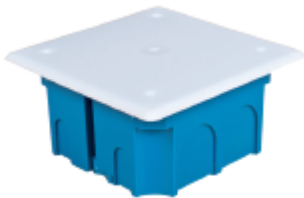
TECHNICAL SPECIFICATION

Distribution boxes square type



Type	Size			Packing (pcs)	Catalogue number
	L	W	H		
Distribution Box 80/80/50	80	80	50	100	1927402
Distribution Box 100/100/50	100	100	50	100	1927401

- Distribution boxes for plasterboard-square type



Type	Size			Packing (pcs)	Catalogue number
	L	W	H		
Distribution Box 80/80/50	80	80	45	100	1927405
Distribution Box 100/100/50	100	100	45	100	1927404

Standard: EN 60670-1:2005

EN 60670-22:2006

