

EL[®]MARK

The Brand of Electricity

SOLAR SANDWICH ROOF MOUNTING STRUCTURE FOR PITCHED ROOF



Since solar panels are designed for outdoor installation and are subject to continuous weather conditions, the type of material that makes the structure is important for the reliability of the entire system. Due to the envisaged long service life of more than 25 years, the construction and attachment of the panels to it must be secure. The mounting structure are available for ground and in different variants according to the type of the roof - metal, bitumen or tile, flat or pitched.

TECHNICAL SPECIFICATION

SOLAR MOUNTING STRUCTURE

ELMARK[®]

The Brand of Electricity

SANDWICH ROOF MOUNTING STRUCTURE FOR PITCHED ROOF, SET:

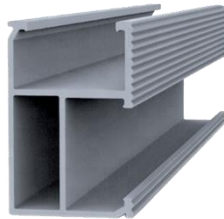
TECHNICAL DATA:

- Installation: tin roof mounting brackets
- Panel type: framed
- Panel orientation: landscape or portrait
- Roof slope: up to 60 degree
- Max wind speed: up to 60 m/s
- Snow load: 1.4 KN/m²

FEATURES:

- Universal roof brackets for different tin roofs
- Suitable for all framed PV modules
- Easy and fast installation
- Pre-assembled components save the installation time and cost

SUITABLE COMPONENTS FOR PITCHED SANDWICH ROOF:



Description	Material	Catalogue number	Barcodes
Rails- 2100mm	Aluminium 6005-T5	423200	3800131233684



Description	Material	Catalogue number	Barcodes
Rail connector- 140mm	Aluminium 6005-T5	423201	3800131233691

TECHNICAL SPECIFICATION

SOLAR MOUNTING STRUCTURE

ELMARK[®]

The Brand of Electricity



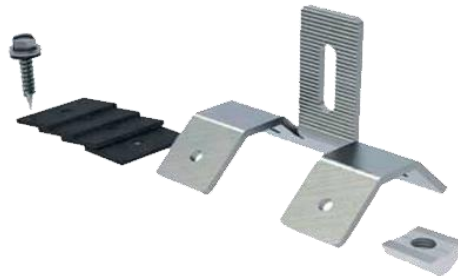
Description	Material	Catalogue number	Barcodes
Mid clamp for framed panel 30-50mm	Aluminium 6005-T5	423202	3800131234032



Description	Material	Catalogue number	Barcodes
End clamp for framed panel 30-50mm	Aluminium 6005-T5	423203	3800131234049



Description	Material	Catalogue number	Barcodes
L-feet for tin roof	stainless steel	423216	3800131234179



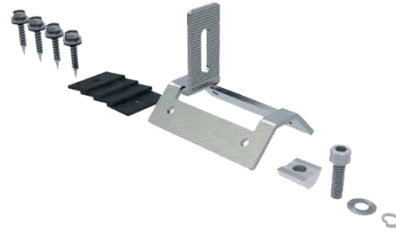
Description	Material	Catalogue number	Barcodes
Tin Roof Hook 2	stainless steel	423217	3800131234186

TECHNICAL SPECIFICATION

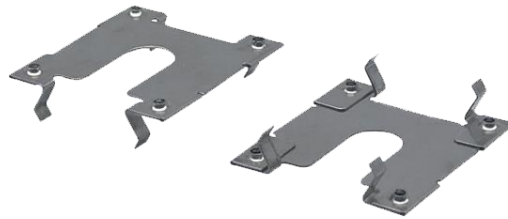
SOLAR MOUNTING STRUCTURE

ELMARK[®]

The Brand of Electricity



Description	Material	Catalogue number	Barcodes
Tin Roof Hook 3	stainless steel	423218	3800131234193



Description	Material	Catalogue number	Barcodes
Grounding Clip	stainless steel	423208	3800131234094



Description	Material	Catalogue number	Barcodes
Earth lug	Aluminium	423209	3800131234100



Description	Material	Catalogue number	Barcodes
Cable clip 1- 2x4/6mm ²	stainless steel	423210	3800131234117

TECHNICAL SPECIFICATION

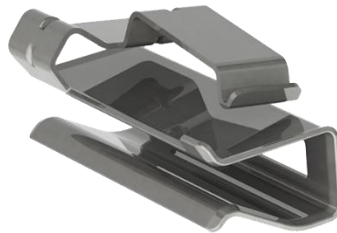
SOLAR MOUNTING STRUCTURE

ELMARK[®]

The Brand of Electricity



Description	Material	Catalogue number	Barcodes
Cable clip 2- 4x90°4/6mm ² /3x90°10mm ²	stainless steel	423211	3800131234124



Description	Material	Catalogue number	Barcodes
Cable clip 8- 2x90°4/6mm ²	stainless steel	423212	3800131234131



Description	Material	Catalogue number	Barcodes
Cable clip 9- 2x90°4/6mm ²	stainless steel	423213	3800131234148

TECHNICAL SPECIFICATION

SOLAR MOUNTING STRUCTURE

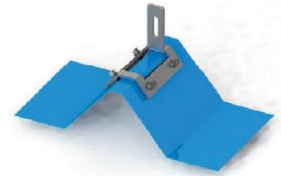
ELMARK®

The Brand of Electricity

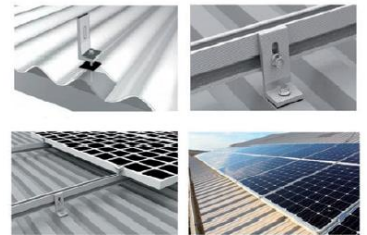
BASIC ELEMENTS QUANTITY CALCULATION FOR EACH SOLAR POWER SYSTEMS STRUCTURE SETS FROM 3.6 TO 30kW:

Quantity from each elements are calculated for solar panel with dimensions 1689x996x35mm and peak power 340W with catalogue number 98SOL380M.

ELEMENT		ELEMENT QTY					
Description	Catalogue number	at 3.6 kW	at 5 kW	at 10 kW	at 15 kW	at 20 kW	at 30 kW
Rails- 2100mm	423200	12	16	30	46	60	90
Rail connector- 140mm	423201	8	12	22	34	45	67
Mid clamp for framed panel 30-50mm	423202	18	26	66	78	102	154
End clamp for framed panel 30-50mm	423203	24	32	60	92	120	180
L-feet for tin roof	423216	26	34	64	98	126	190
Grounding Clip	423208	18	26	66	78	102	154
Earth lug	423209	12	16	32	48	60	92



SANDWICH ROOF MOUNTING OPTION 1

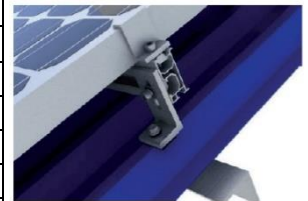


SANDWICH ROOF MOUNTING OPTION 2

SETS CATALOGUE NUMBERS:

The quantity elements for each structure set is to described in the table upper.

Solar power systems (kW)	Catalogue number
3.6	423270P/DR
5	423271P/DR
10	423272P/DR
15	423273P/DR
20	423274P/DR
30	423275P/DR



SANDWICH ROOF MOUNTING STRUCTURE FOR PITCHED ROOF

