

# EL<sup>®</sup>MARK

The Brand of Electricity

## SOLAR SHINGLE ROOF MOUNTING STRUCTURE FOR PITCHED ROOF



Since solar panels are designed for outdoor installation and are subject to continuous weather conditions, the type of material that makes the structure is important for the reliability of the entire system. Due to the envisaged long service life of more than 25 years, the construction and attachment of the panels to it must be secure. The mounting structure are available for ground and in different variants according to the type of the roof - metal, bitumen or tile, flat or pitched.

# TECHNICAL SPECIFICATION

## SOLAR MOUNTING STRUCTURE

**ELMARK**<sup>®</sup>

The Brand of Electricity

### SHINGLE ROOF MOUNTING STRUCTURE FOR PITCHED ROOF, SET:

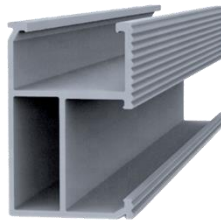
#### TECHNICAL DATA:

- Installation Site: shingle roof
- Panel type: framed
- Roof Slope: Up to 60 degree
- Wind Speed: Up to 60 m/s
- Snow load: 1.4 KN/m<sup>2</sup>

#### FEATURES:

- Suitable for all framed PV modules
- Easy and fast installation
- Pre-assembled components save the installation time and cost

### SUITABLE COMPONENTS FOR PITCHED SHINGLE ROOF:



Description	Material	Catalogue number	Barcodes
Rails- 2100mm	Aluminium 6005-T5	423200	3800131233684



Description	Material	Catalogue number	Barcodes
Rail connector- 140mm	Aluminium 6005-T5	423201	3800131233691

# TECHNICAL SPECIFICATION

## SOLAR MOUNTING STRUCTURE

**ELMARK**<sup>®</sup>

The Brand of Electricity



Description	Material	Catalogue number	Barcodes
Mid clamp for framed panel 30-50mm	Aluminium 6005-T5	423202	3800131234032



Description	Material	Catalogue number	Barcodes
End clamp for framed panel 30-50mm	Aluminium 6005-T5	423203	3800131234049



Description	Material	Catalogue number	Barcodes
L-feet with cone hole	stainless steel	423214	3800131234155

# TECHNICAL SPECIFICATION

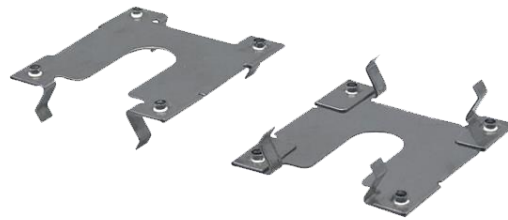
## SOLAR MOUNTING STRUCTURE

**ELMARK**<sup>®</sup>

The Brand of Electricity



Description	Material	Catalogue number	Barcodes
Flashing plate 280x280	stainless steel	423215	3800131234162



Description	Material	Catalogue number	Barcodes
Grounding Clip	stainless steel	423208	3800131234094



Description	Material	Catalogue number	Barcodes
Earth lug	Aluminium	423209	3800131234100



Description	Material	Catalogue number	Barcodes
Cable clip 1- 2x4/6mm <sup>2</sup>	stainless steel	423210	3800131234117

# TECHNICAL SPECIFICATION

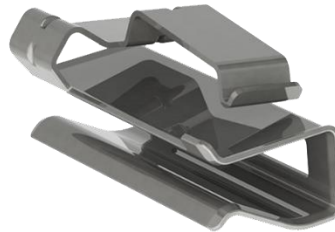
## SOLAR MOUNTING STRUCTURE

**ELMARK**<sup>®</sup>

The Brand of Electricity



Description	Material	Catalogue number	Barcodes
Cable clip 2- 4x90°4/6mm <sup>2</sup> /3x90°10mm <sup>2</sup>	stainless steel	423211	3800131234124



Description	Material	Catalogue number	Barcodes
Cable clip 8- 2x90°4/6mm <sup>2</sup>	stainless steel	423212	3800131234131



Description	Material	Catalogue number	Barcodes
Cable clip 9- 2x90°4/6mm <sup>2</sup>	stainless steel	423213	3800131234148

# TECHNICAL SPECIFICATION

## SOLAR MOUNTING STRUCTURE

# ELMARK®

The Brand of Electricity

### BASIC ELEMENTS QUANTITY CALCULATION FOR EACH SOLAR POWER SYSTEMS STRUCTURE SETS FROM 3.6 TO 30kW:

Quantity from each elements are calculated for solar panel with dimensions 1689x996x35mm and peak power 340W with catalogue number 98SOL380M.

ELEMENT		ELEMENT QTY					
Description	Catalogue number	at 3.6 kW	at 5 kW	at 10 kW	at 15 kW	at 20 kW	at 30 kW
Rails- 2100mm	423200	12	16	30	46	60	90
Rail connector- 140mm	423201	8	12	22	34	45	67
Mid clamp for framed panel 30-50mm	423202	18	26	66	78	102	154
End clamp for framed panel 30-50mm	423203	24	32	60	92	120	180
L-feet with cone hole	423214	26	34	64	98	126	190
Flashing plate 280x280	423215	26	34	64	98	126	190
Grounding Clip	423208	18	26	66	78	102	154
Earth lug	423209	12	16	32	48	60	92



SHINGLE ROOF MOUNTING STRUCTURE FOR PITCHED ROOF

### SETS CATALOGUE NUMBERS:

The quantity elements for each structure set is to described in the table upper.

Solar power systems (kW)	Catalogue number
3.6	423270P/SR
5	423271P/SR
10	423272P/SR
15	423273P/SR
20	423274P/SR
30	423275P/SR

