

# EL<sup>®</sup>MARK

The Brand of Electricity

## SOLAR TRIANGULAR MOUNTING STRUCTURE FOR GROUND AND FLAT ROOF



Since solar panels are designed for outdoor installation and are subject to continuous weather conditions, the type of material that makes the structure is important for the reliability of the entire system. Due to the envisaged long service life of more than 25 years, the construction and attachment of the panels to it must be secure. The mounting structure are available for ground and in different variants according to the type of the roof - metal, bitumen or tile, flat or pitched.

# TECHNICAL SPECIFICATION

## SOLAR MOUNTING STRUCTURE

**ELMARK**<sup>®</sup>

The Brand of Electricity

### TRIANGULAR MOUNTING STRUCTURE FOR GROUND AND FLAT ROOF, SET:

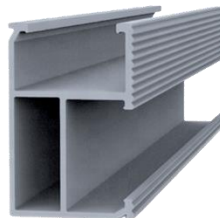
#### TECHNICAL DATA:

- Installation Site: flat roof
- Panel type: framed
- Wind Speed: Up to 60 m/s
- Snow load: 1.4 KN/m<sup>2</sup>

#### FEATURES:

- Triangular mounting brackets with stable structure, it can be installed directly on rooftop, ground or premade cement blocks as your option
- Suitable for all framed PV modules
- Easy and fast installation
- Pre-assembled components save the installation time and cost

### SUITABLE COMPONENTS FOR TRIANGULAR MOUNTING STRUCTURE FOR GROUND AND FLAT ROOF:



Description	Material	Catalogue number	Barcodes
Rails- 2100mm	Aluminium 6005-T5	423200	3800131233684



Description	Material	Catalogue number	Barcodes
Rail connector- 140mm	Aluminium 6005-T5	423201	3800131233691

# TECHNICAL SPECIFICATION

## SOLAR MOUNTING STRUCTURE

**ELMARK**<sup>®</sup>

The Brand of Electricity



Description	Material	Catalogue number	Barcodes
Mid clamp for framed panel 30-50mm	Aluminium 6005-T5	423202	3800131234032



Description	Material	Catalogue number	Barcodes
End clamp for framed panel 30-50mm	Aluminium 6005-T5	423203	3800131234049



Description	Material	Catalogue number	Barcodes
15° Triangular mounts	Aluminium 6005-T5	423223	3800131233820



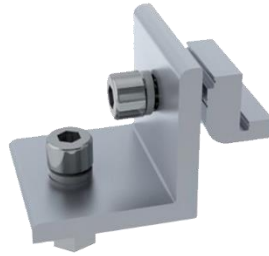
Description	Material	Catalogue number	Barcodes
30° Triangular mounts	Aluminium 6005-T5	423227	3800131234223

# TECHNICAL SPECIFICATION

## SOLAR MOUNTING STRUCTURE

**ELMARK**<sup>®</sup>

The Brand of Electricity



Description	Material	Catalogue number	Barcodes
L-connector for rail	stainless steel	423224	3800131234209



Description	Material	Catalogue number	Barcodes
Hex nut anchor	Galvanized steel	M517215	3800131224835



Description	Material	Catalogue number	Barcodes
Grounding Clip	stainless steel	423208	3800131234094



Description	Material	Catalogue number	Barcodes
Earth lug	Aluminium	423209	3800131234100

# TECHNICAL SPECIFICATION

## SOLAR MOUNTING STRUCTURE

**ELMARK**<sup>®</sup>

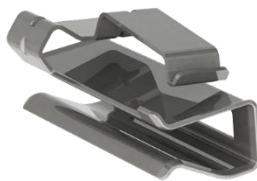
The Brand of Electricity



Description	Material	Catalogue number	Barcodes
Cable clip 1- 2x4/6mm <sup>2</sup>	stainless steel	423210	3800131234117



Description	Material	Catalogue number	Barcodes
Cable clip 2- 4x90°4/6mm <sup>2</sup> /3x90°10mm <sup>2</sup>	stainless steel	423211	3800131234124



Description	Material	Catalogue number	Barcodes
Cable clip 8- 2x90°4/6mm <sup>2</sup>	stainless steel	423212	3800131234131



Description	Material	Catalogue number	Barcodes
Cable clip 9- 2x90°4/6mm <sup>2</sup>	stainless steel	423213	3800131234148

# TECHNICAL SPECIFICATION

## SOLAR MOUNTING STRUCTURE

# ELMARK®

The Brand of Electricity

### BASIC ELEMENTS QUANTITY CALCULATION FOR EACH SOLAR POWER SYSTEMS STRUCTURE SETS FROM 3.6 TO 30KW:

Quantity from each elements are calculated for solar panel with dimensions 1689x996x35mm and peak power 340W with catalogue number 98SOL380M.

ELEMENT		ELEMENT QTY					
Description	Catalogue number	at 3.6 kW	at 5 kW	at 10 kW	at 15 kW	at 20 kW	at 30 kW
Rails- 2100mm	423200	12	16	30	46	60	90
Rail connector- 140mm	423201	8	12	22	34	45	67
Mid clamp for framed panel 30-50mm	423202	18	26	66	78	102	154
End clamp for framed panel 30-50mm	423203	24	32	60	92	120	180
30° Triangular mounts	423227	12	16	30	46	60	90
L-connector for rail	423224	24	32	60	92	120	180
Hex nut anchor	M517215	26	34	64	98	126	190
Grounding Clip	423208	18	26	66	78	102	154
Earth lug	423209	12	16	32	48	60	92



TRIANGULAR MOUNTING STRUCTURE FOR GROUND AND FLAT ROOF

### SETS CATALOGUE NUMBERS:

The quantity elements for each structure set is to described in the table upper.

Solar power systems (kW)	Catalogue number
3.6	423270F/TR
5	423271F/TR
10	423272F/TR
15	423273F/TR
20	423274F/TR
30	423275F/TR

