

## Technical data

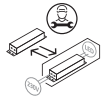
Supply Voltage: 220-240 V~, 50 Hz

Bulb Type:	78560	:	24.5W	LED module, 4000K
	78561	:	41W	LED module, 4000K
	78562	:	52W	LED module, 4000K
	78563	:	42.5W	LED module, 4000K
	78564	:	65.5W	LED module, 4000K
	78565	:	68.5W	LED module, 4000K

Duration: 3 hours (180 Minutes)  
Operating Temperature: 0°C-50°C  
Mains input current: 35mA±10%  
input power in mains operation: 4.5W±10%  
Emergency power: 1.8W-2.5W  
Battery Specification: LiFePO4 6.4V 1500mAH  
Battery Charge Time: 24 Hours  
Battery charge current: 250-300mA  
Battery warranty: 2 years

These products contain a light source of energy efficiency class **D**.

  Non-replaceable light source



Replaceable control gear by a professional



Conformity with all relevant UKCA Directive requirements.



Conformity with all relevant EC Directive requirements.



This product is Class 1, must be connected to earth.



Waste electrical products should not be disposed of with household waste. Please recycle where facilities exist. Check with your Local Authority or local store for recycling advice.



This product is not suitable for dimming.

## Care and Safety

Live Voltages may be present in this unit even when turned off or when completely disconnected.

We recommend cleaning with a soft dry cloth. Do not use solvents or abrasive cleaners as these could damage the finish.

For your safety, always switch off the power supply before cleaning.

Instruction manual

# Rular Batten EM

78560, 78561, 78562, 78563, 78564, 78565



For further information, please visit <https://www.lighting-info.co.uk/78560>

V4 06/04/2022

UK Manufacturer: BH17 7BY

EU Manufacturer: Brilliant AG,  
Brilliantstrasse 1, D-27442 Gnarrenburg

saxby  
lighting

[www.saxbylighting.com](http://www.saxbylighting.com)

saxby  
lighting

Thank you for purchasing this light fitting. Please read the instructions carefully before use to ensure safe and satisfactory operation of this product. Please retain these instructions for future reference.

## Warning

This is a Class 1 product and must be earthed.

Please read these instructions carefully before commencing any work.

This unit must be fitted by a competent and qualified electrician.

Check the pack and make sure you have all the parts listed.

Install in accordance with the IEE Wiring regulations and current Building Regulations.

To prevent electrocution switch off at mains supply before installing or maintaining this fitting. Ensure other persons cannot restore the electrical supply without your knowledge. If you are in any doubt, please consult a qualified electrician.

This light fitting should be connected to a fused circuit.

If replacing an existing fitting, make a careful note of the connections.

This product contains non-replaceable parts and cannot be serviced. If damage occurs the part should be scrapped.

Waste electrical products should not be disposed of with household waste. Please recycle where facilities exist. Check with your local authority or retailer for recycling advice.

## Layout

Plan the desired layout of these fittings carefully, ensuring the cables will reach the distance between the junction box and the light fitting.

Avoid locating any cables in positions that would cause a hazard. Position cables away from areas where they may be at risk from being cut, trapped or damaged.

The mains supply cable must have a minimum cross sectional area of 1.0mm<sup>2</sup>.

Cables must be protected using suitable conduit or plastic trunking.

This product can be installed on the ceiling or wall.

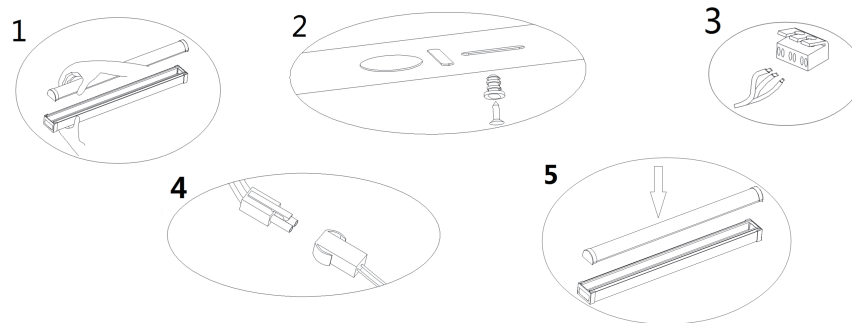
## Installation

Existing fittings must be completely removed before installation of a new product. Before removing the existing fitting, carefully note the position of each set of wires.

Note that the switch is turned off before installation.

The mounting surface must be flat and smooth to ensure a good fit.

- Starting from one end and working along, remove the LED diffuser unit by gently squeezing the sides of the metal body and lifting off the diffuser unit to one side.
- Hold the product in place and mark the position of the fixing holes. This may require the help of an assistant. If wall mounting, ensure that the product is level.
- Ensure the ceiling or wall is capable of holding the weight of the product and then fix brackets in place.
- Take care to avoid damaging any concealed wiring and pipes. The correct fixings should be used for brick, cavity walls or plasterboard.
- Feed the supply cable through the centre hole and fix the light fitting into position.
- Connect the supply cable to the quick fit terminal block as detailed wiring diagram.



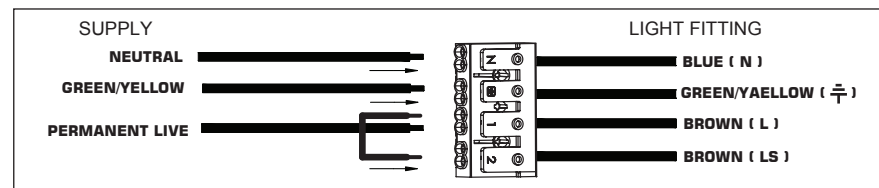
## Wiring

This product is Class I product must be earthed. They must be joined together and well insulated with good quality insulation tape. This is to ensure earth continuity throughout your property.

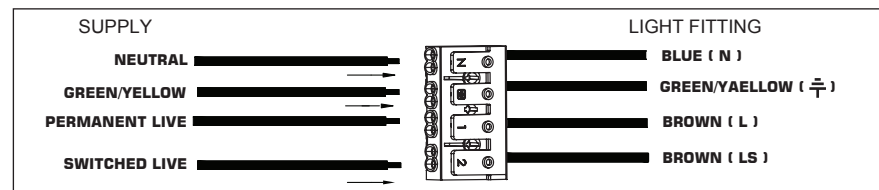
Having correctly identified the wiring from your existing light fitting and connect to the connection block inside the product in the following way:



**Non-Maintained Wiring:** The product is normally off and comes on during a power failure.



**Maintained (Switched) Wiring:** The product is used as a normal light - switch on/off, light turns on/off. Comes on during a power failure.



## Check that...

- You have correctly identified the wires.
- The connections are tight.
- No loose strands have been left out of the connection block.

## Commissioning

- Connect the LED driver output cable to the LED diffuser unit, connect the battery output cable to EM driver. ensuring they are securely clipped together
- Refit the LED diffuser unit by clipping it into place ensuring the sides are aligned with the body. Take care not to trap any cables.
- Replace fuse or circuit breaker and switch on. Your light is now ready for use.