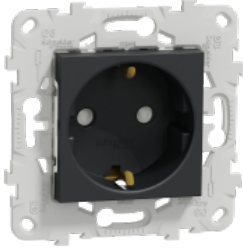


Product data sheet

Specifications



Socket-outlet, New Unica, mechanism with fixing frame, 2P + E, 16A, Schuko, with shutter, painted, anthracite

NU503754

Main

Range	New Unica
Product or component type	Socket-outlet
Device presentation	Mechanism with zamak fixing frame
Device mounting	Flush
Socket number	1
Outlet poles configuration	2P + E
Outlet standard	Schuko
Outlet standard description	Side earth
Rated current	16 A

Complementary

Device application	Power supply
Cover type	With shutter
[Ue] rated operational voltage	250 V
Network type	AC
Network frequency	50/60 Hz
Number of modules	2 modules
Fixing mode	Screws or claws
Colour tint	Anthracite (RAL 7021)
Connections - terminals	Screw terminals
Cable cross section	0...4 mm ² cable(s), 2 - cable stiffness: flexible 0...4 mm ² cable(s), 2 - cable stiffness: rigid
Minimum load breaking capacity	100 operations 1.25 I _n and 1.1 I _{un} , cos phi = 0.6
Electrical durability	10000 cycles, cos phi = 0.8
Insulation resistance	> 5 MOhm at 500 V
Dielectric strength	2000 V
Material	PC: mechanism cover PC (polycarbonate) GF10 FR: casing Zamak: fixing frame
Surface finish	Painted
Quantity per set	Set of 1 flow-pack

Standards	IEC 60884-1 UNE 20315-1-1 UNE 20315-1-2 DIN VDE 0620-1
Product certifications	AENOR EAC
Embedding depth	30.5 mm
Depth	40 mm
Width	74.5 mm
Height	74.5 mm
Net weight	0.0665 kg
Surface treatment	Painted
Resistance to chemical agents	Resistant to alcohol (70 %) Resistant to alcohol (96 %) Resistant to A-Lactic Acid Resistant to diluted quaternary ammonium Resistant to diluted bleach Resistant to diluted ammonia Resistant to soapy water Resistant to crystal cleaner Resistant to hydrogen peroxide 10 volumes Resistant to hexane

Environment

Ambient air temperature for operation	-5...35 °C
Ambient air temperature for storage	-5...50 °C
IK degree of protection	IK04
IP degree of protection	IP21D
Environmental characteristic	Acetone Bleach UV resistant Petrol Oil Alcohol Window-cleaning fluid Liquid soap

Packing Units

Unit Type of Package 1	PCE
Number of Units in Package 1	1
Package 1 Height	4.5 cm
Package 1 Width	4.5 cm
Package 1 Length	4 cm
Package 1 Weight	33 g
Unit Type of Package 2	CAR
Number of Units in Package 2	10
Package 2 Height	8.2 cm
Package 2 Width	19.7 cm
Package 2 Length	22.6 cm
Package 2 Weight	435 g
Unit Type of Package 3	S03
Number of Units in Package 3	50
Package 3 Height	30 cm

Package 3 Width	30 cm
Package 3 Length	40 cm
Package 3 Weight	2.613 kg

Offer Sustainability

REACH Regulation	REACH Declaration
REACH free of SVHC	Yes
EU RoHS Directive	Compliant EU RoHS Declaration
China RoHS Regulation	China RoHS declaration Pro-active China RoHS declaration (out of China RoHS legal scope)
Circularity Profile	No need of specific recycling operations
WEEE	The product must be disposed on European Union markets following specific waste collection and never end up in rubbish bins
Minimum percentage of recycled plastic content	56

Recommended replacement(s)