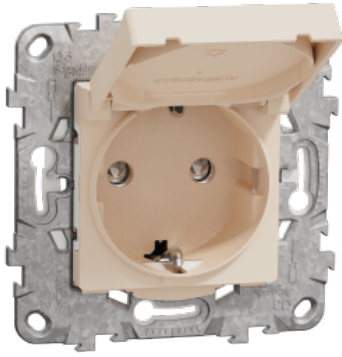


Product data sheet

Specifications



Socket outlet, New Unica, Schuko, with shutter, 2P+E, 16A, 2 modules, IP44, beige

NU508244

Main

Range	New Unica
Product or component type	Socket-outlet
Device presentation	Mechanism with central plate
Device mounting	Flush
Socket number	1
Outlet poles configuration	2P + E
Outlet standard	Schuko
Outlet standard description	Side earth
Socket additional information	With hinged lid
Ground lug position	90° ground lug
Rated current	16 A

Complementary

Device application	Power supply
Cover type	With shutter
[Ue] rated operational voltage	250 V
Network type	AC
Network frequency	50/60 Hz
Number of modules	2 modules
Fixing mode	4 fixing points
Colour tint	Beige (RAL 1013)
Connections - terminals	Screwless terminals
Cable cross section	0...2.5 mm ² cable(s), 2 - cable stiffness: flexible 0...2.5 mm ² cable(s), 2 - cable stiffness: rigid
Minimum load breaking capacity	100 operations 1.25 I _n and 1.1 I _{un} , cos phi = 0.6
Electrical durability	10000 cycles, cos phi = 0.8
Insulation resistance	> 5 MOhm at 500 V
Dielectric strength	2000 V
Material	PC: mechanism cover PC (polycarbonate) GF10 FR: casing

Surface finish	Glossy
Quantity per set	Set of 1 flow-pack
Standards	IEC 60884-1 UNE 20315-1-1 UNE 20315-1-2
Product certifications	AENOR EAC
Embedding depth	30 mm
Depth	48 mm
Width	74.5 mm
Height	74.5 mm
Net weight	0.0712 kg
Surface treatment	Untreated
Resistance to chemical agents	Resistant to alcohol (70 %) Resistant to alcohol (96 %) Resistant to A-Lactic Acid Resistant to diluted quaternary ammonium Resistant to diluted bleach Resistant to diluted ammonia Resistant to soapy water Resistant to crystal cleaner Resistant to hydrogen peroxide 10 volumes Resistant to hexane

Environment

Ambient air temperature for operation	-5...35 °C
Ambient air temperature for storage	-5...50 °C
IK degree of protection	IK01
IP degree of protection	IP44
Environmental characteristic	Acetone Bleach UV resistant Petrol Oil Alcohol Window-cleaning fluid Liquid soap

Packing Units

Unit Type of Package 1	PCE
Number of Units in Package 1	1
Package 1 Height	4.500 cm
Package 1 Width	7.000 cm
Package 1 Length	7.000 cm
Package 1 Weight	75.000 g
Unit Type of Package 2	S02
Number of Units in Package 2	10
Package 2 Height	15.000 cm
Package 2 Width	30.000 cm
Package 2 Length	40.000 cm
Package 2 Weight	861.000 g
Unit Type of Package 3	P06
Number of Units in Package 3	160

Package 3 Height	75.000 cm
Package 3 Width	80.000 cm
Package 3 Length	60.000 cm
Package 3 Weight	21.776 kg

Offer Sustainability

REACH Regulation	REACH Declaration
REACH free of SVHC	Yes
EU RoHS Directive	Compliant EU RoHS Declaration
Toxic heavy metal free	Yes
Mercury free	Yes
China RoHS Regulation	China RoHS declaration Pro-active China RoHS declaration (out of China RoHS legal scope)
RoHS exemption information	Yes
Circularity Profile	No need of specific recycling operations
Minimum percentage of recycled plastic content	29

Recommended replacement(s)