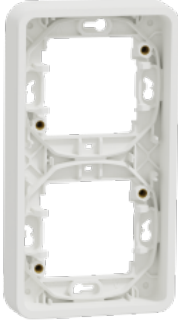


# Product data sheet

Specifications



## Mureva Styl - fixing frame - 2 gangs - vertical - white

MUR39151

### Main

Range of product	Mureva Styl
Product or component type	Fixing frame
Range compatibility	Mureva Styl
Colour tint	White (RAL 9003)

### Complementary

Device mounting	Flush
Number of gangs	2 gangs
Installation direction	Vertical
Condition of use	Indoor/outdoor
Material	PC
Distance between centers	71 mm
Length	84 mm
Height	23 mm
Width	155 mm
Projecting depth	19 mm
Chemical and detergent products resistance	Resistant to alcohol (70 %) Resistant to alcohol (96 %) Resistant to A-Lactic Acid Resistant to diluted quaternary ammonium Resistant to diluted bleach Resistant to diluted ammonia Resistant to soapy water Resistant to crystal cleaner Resistant to hydrogen peroxide 10 volumes Resistant to hexane

### Environment

Quality labels	NF AENOR
IP degree of protection	IP55
IK degree of protection	IK08
Flame retardance	Self-extinguishing 650 °C conforming to IEC 60695-2-1
Ambient air temperature for operation	-5...40 °C

---

Ambient air temperature for storage -25...55 °C

## Packing Units

---

Unit Type of Package 1	PCE
Number of Units in Package 1	1
Package 1 Height	2 cm
Package 1 Width	8.1 cm
Package 1 Length	15.4 cm
Package 1 Weight	64 g
Unit Type of Package 2	P12
Number of Units in Package 2	120
Package 2 Height	45 cm
Package 2 Width	80 cm
Package 2 Length	120 cm
Package 2 Weight	36.736 kg

## Offer Sustainability

---

REACH Regulation	<a href="#">REACH Declaration</a>
EU RoHS Directive	Pro-active compliance (Product out of EU RoHS legal scope)
Mercury free	Yes
China RoHS Regulation	<a href="#">China RoHS declaration</a> Product out of China RoHS scope. Substance declaration for your information
RoHS exemption information	<a href="#">Yes</a>

## Recommended replacement(s)