

ELMARK[®]

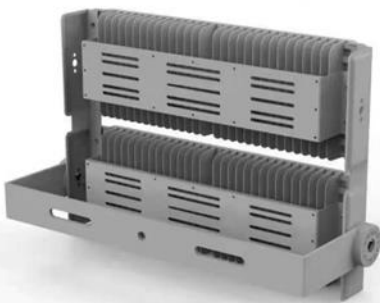
The Brand of Electricity

MARS LED FLOODLIGHTS

GENERAL INFORMATION »



- ∴ Rated voltage: AC 85-265V/ 50-60Hz
- ∴ Power: 200W; 400W; 600W; 800W; 1200W; 1600W
- ∴ LED source: SMD3030
- ∴ Lumen efficiency: 140lm/W
- ∴ Color temperature: 5500K
- ∴ Color: Gray
- ∴ Material: Aluminum + PC
- ∴ Surge protection: 6kV
- ∴ Beam angle: 90°; 30°; 60°
- ∴ Colour rendering index: Ra > 70
- ∴ Power factor: >0.95
- ∴ Protection against dust and moisture: IP65



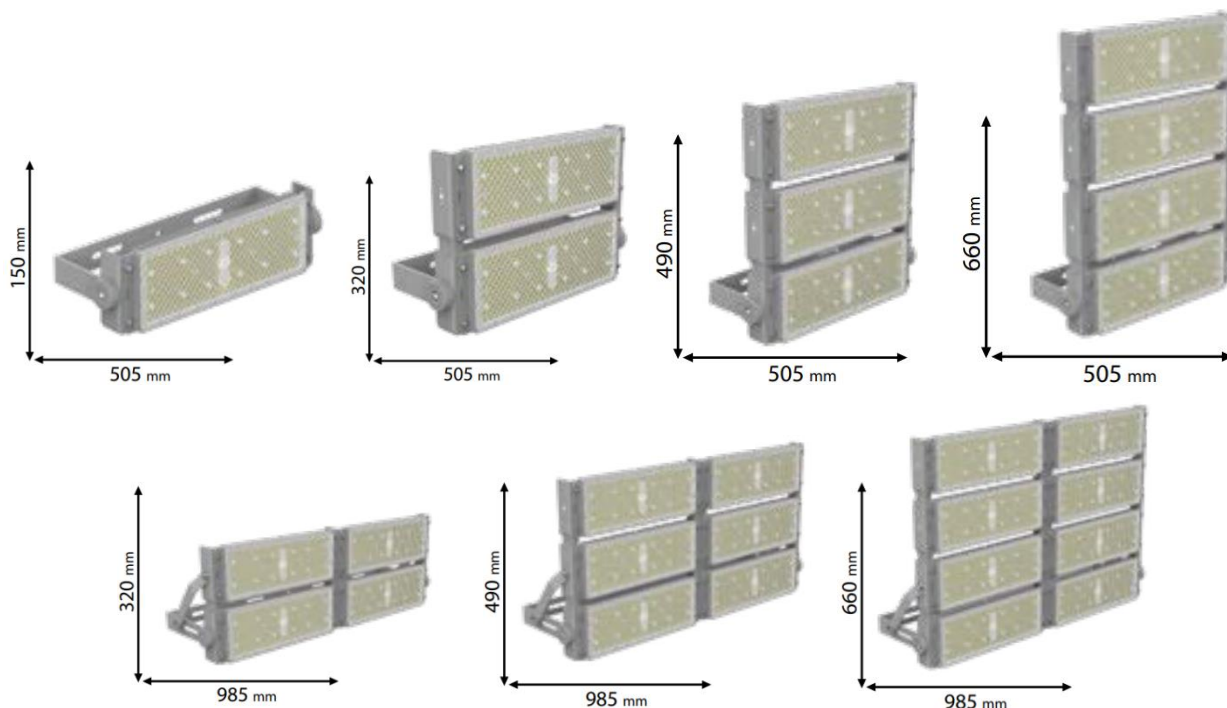
FEATURES »

- ∴ Efficient replacement of traditional halogen and metal-halide floodlights
- ∴ Wide distribution of even and stable light
- ∴ Economic - low power consumption
- ∴ Repeated switch on/off does not affect the fixture lifespan
- ∴ Instant light at maximum luminous flux
- ∴ Environmentally friendly - no mercury and lead
- ∴ No ultraviolet and infrared rays
- ∴ Resistant to shock and vibration stable body
- ∴ Voltage supply fluctuations do not affect the normal operation of the floodlights

TECHNICAL SPECIFICATION SHEET

[PRODUCT DETAILS »](#)

Catalogue number	Watt (W)	Whole fixture lumens (lm)	Lumens efficiency (lm/W)	Beam angle	Colour temp (K)	Colour body
98MARS20090CW	200	28000	140lm/W	90°	5500K	Grey
98MARS20030CW	200	28000	140lm/W	30°	5500K	Grey
98MARS20060CW	200	28000	140lm/W	60°	5500K	Grey
98MARS40090CW	400	56000	140lm/W	90°	5500K	Grey
98MARS40030CW	400	56000	140lm/W	30°	5500K	Grey
98MARS40060CW	400	56000	140lm/W	60°	5500K	Grey
98MARS60090CW	600	84000	140lm/W	90°	5500K	Grey
98MARS60030CW	600	84000	140lm/W	30°	5500K	Grey
98MARS60060CW	600	84000	140lm/W	60°	5500K	Grey
98MARS80090CW1	800	112000	140lm/W	90°	5500K	Grey
98MARS80030CW1	800	112000	140lm/W	30°	5500K	Grey
98MARS80060CW1	800	112000	140lm/W	60°	5500K	Grey
98MARS80090CW2	800	112000	140lm/W	90°	5500K	Grey
98MARS80030CW2	800	112000	140lm/W	30°	5500K	Grey
98MARS80060CW2	800	112000	140lm/W	60°	5500K	Grey
98MARS120090CW	1200	168000	140lm/W	90°	5500K	Grey
98MARS120030CW	1200	168000	140lm/W	30°	5500K	Grey
98MARS120060CW	1200	168000	140lm/W	60°	5500K	Grey
98MARS160090CW	1600	224000	140lm/W	90°	5500K	Grey
98MARS160030CW	1600	224000	140lm/W	30°	5500K	Grey
98MARS160060CW	1600	224000	140lm/W	60°	5500K	Grey



DIMENSIONS »

Catalogue number	Length (mm)	Hight (mm)	Width (mm)
98MARS20090CW	505	150	75
98MARS20030CW	505	150	75
98MARS20060CW	505	150	75
98MARS40090CW	505	320	75
98MARS40030CW	505	320	75
98MARS40060CW	505	320	75
98MARS60090CW	505	490	75
98MARS60030CW	505	490	75
98MARS60060CW	505	490	75
98MARS80090CW1	505	660	75
98MARS80030CW1	505	660	75
98MARS80060CW1	505	660	75
98MARS80090CW2	985	320	75
98MARS80030CW2	985	320	75
98MARS80060CW2	985	320	75
98MARS120090CW	985	490	75
98MARS120030CW	985	490	75
98MARS120060CW	985	490	75
98MARS160090CW	985	660	75
98MARS160030CW	985	660	75
98MARS160060CW	985	660	75

Driver technical information »

Uin	220-240VAC
Uout	21-71VDC
Pout	200W
Iin	0.9-1.1Aac
Iout	2.8-5.6Adc
PF	0.95
Ta	-40 -50C
Tc	90°C

