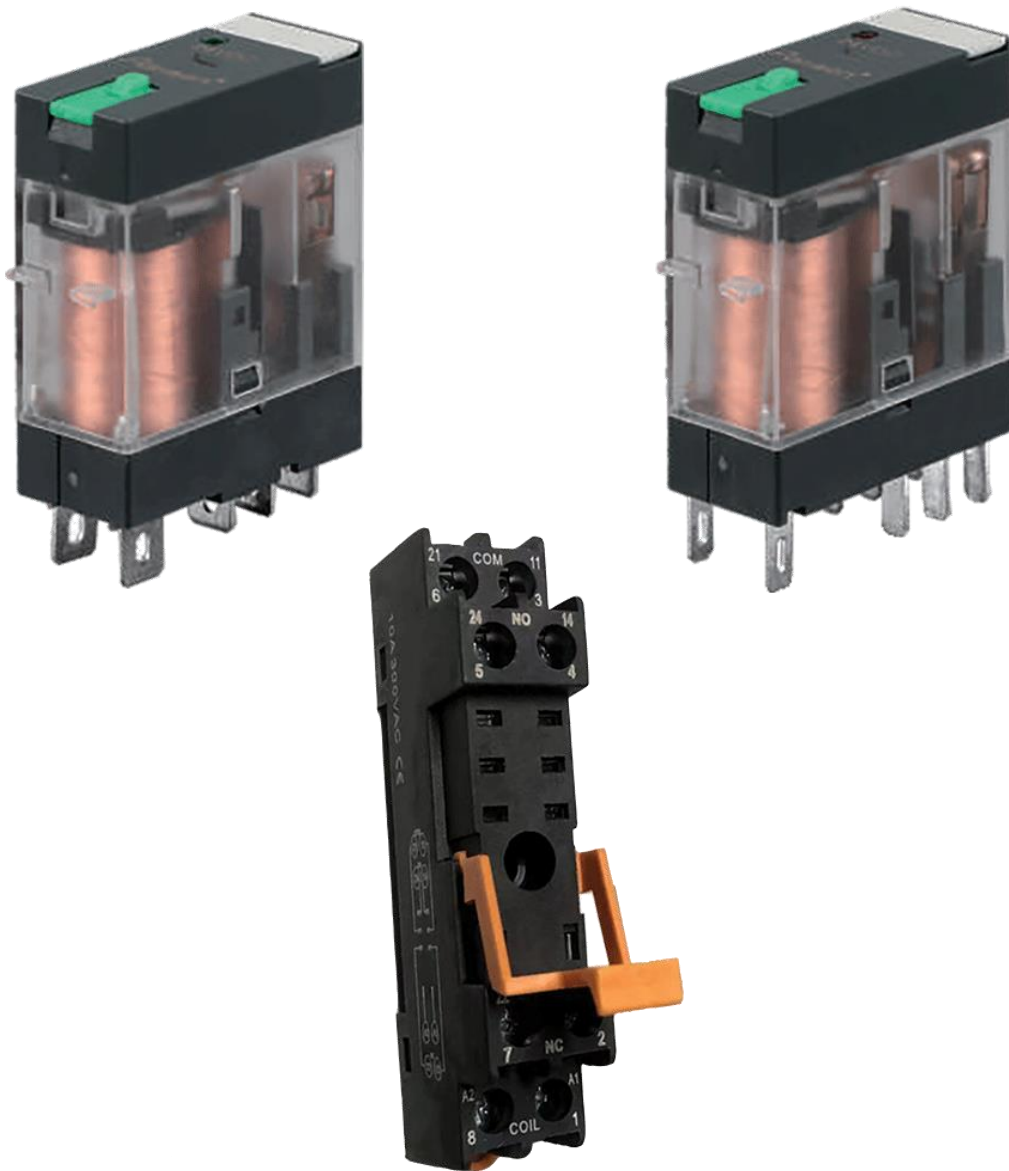


EL[®]MARK

The Brand of Electricity

INTERFACE RELAYS EL-14F-LS and
BASES



INTERFACE RELAYS EL-14F-LS SERIES

Functions:

ELMARK interface relays provide reliable voltage conversion in control systems. Our relays ensure reliable signal switching and provide electrical isolation for sensitive electronics in all kinds of machinery in industry.

Technical data:

- Rated load: 1Z-12A; 2Z-8A
 - Rated voltage: 12V DC; 24V DC; 230V AC
 - Insulation resistance: $\leq 500\text{M}\Omega$
 - Operating power: 0.53W/0.9VA
 - Dielectric strength
 - $\frac{3}{4}$ Between open contacts: $\geq 1000\text{V AC}/1\text{ min}$
 - $\frac{3}{4}$ Between poles: $\geq 1500\text{V AC}/1\text{ min}$
 - $\frac{3}{4}$ Between contact and coil: $\geq 4000\text{V AC}/1\text{ min}$
 - Operate/ release time: $\leq 15\text{ms}/15\text{ms}$
 - Terminal type: Plug-in
 - Contact material: AgSnO₂
 - Electrical life: 10^5 times
 - Mechanical life: 10^7 times
 - Size LxHxD: 28.8 x 34.2 x 12.6 mm
-

Features:

- Good response control
- Slim size
- With LED indicator
- With lockable test button and inspection window
- High rated load

TECHNICAL SPECIFICATION

AUTOMATION

ELMARK[®]

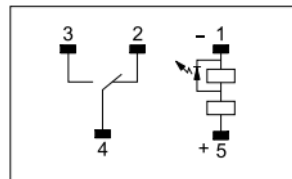
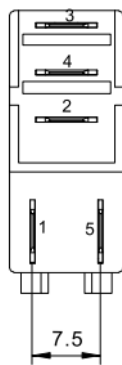
The Brand of Electricity

Variants:



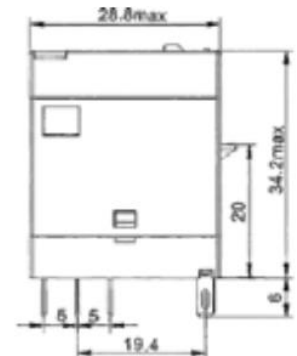
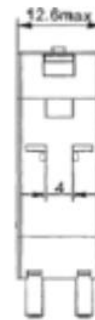
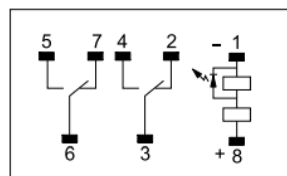
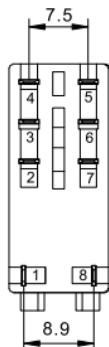
Type EL-14F-LS/ 1Z

Catalogue number	Relay type	Voltage of the coil (V)	Drop out voltage	Resistance of the coil (Ω)	Socket type	Contact form	Packing/ Box (pcs)
57100	EL-14F-LS	12V DC	1.2	270	EL05A-E	1Z	20/300
57101	EL-14F-LS	24V DC	2.4	1100	EL05A-E	1Z	20/300
57102	EL-14F-LS	230V AC	69.0	23000	EL05A-E	1Z	20/300



Type EL-14F-LS/ 2Z

Catalogue number	Relay type	Voltage of the coil (V)	Drop out voltage	Resistance of the coil (Ω)	Socket type	Contact form	Packing/ Box (pcs)
57103	EL-14F-LS	12V DC	1.2	270	EL08A-E	2Z	20/300
57104	EL-14F-LS	24V DC	2.4	1100	EL08A-E	2Z	20/300
57105	EL-14F-LS	230V AC	69.0	23000	EL08A-E	2Z	20/300



TECHNICAL SPECIFICATION

AUTOMATION

ELMARK[®]

The Brand of Electricity

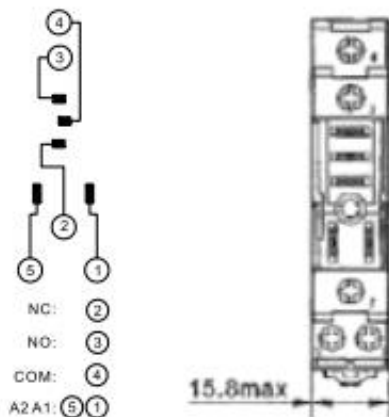
BASES FOR INTERFACE RELAYS EL-14F-LS SERIES

Technical data:

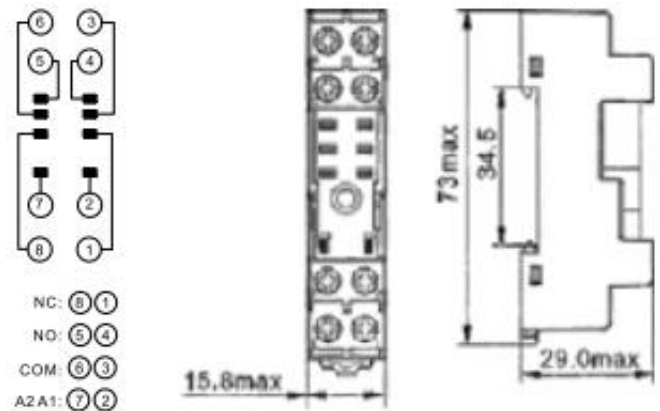
- Rated load:
 - ¼ EL05A-E: 10A
 - ¼ EL08A-E: 16A
- Rated voltage: 300V AC
- Wire size: 0.5-2.5mm²
- Tightening torque: 0.8Nm

Variants:

Catalogue number	Socket type	Dimensions (mm)	Number of terminals (pcs.)	Number of contacts	Packing/Box (pcs)
57106	EL05A-E	15.8x73x29	1NO+1NC	5	10/240
57107	EL08A-E	15.8x73x29	2NO+2NC	8	10/240



Type EL05A-E/ 5



Type EL05A-E/ 8