

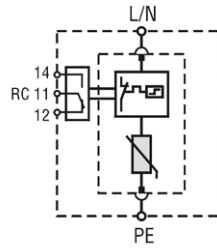
Surge arrester ETITEC group B T12 EN/IEC/VDE: T1,T2 /I,II/B,C

ETITEC B T12	
Type	275/7
In accordance with	IEC/EN 61643-11
Category IEC/EN/VDE	I, II / T1,T2 / B,C
Max. continuous operating voltage (AC) U_c	275
Nominal AC voltage U_o	230V 50-60 Hz
TOV immunity U_T (AC)	335 V/5s withstand
	440 V/120 min safe disconnection
Impulse current (10/350) I_{imp}	7 kA
Nominal discharge current (8/20) I_n	25 kA
Max. discharge current (8/20) I_{max}	50 kA
Charge	
Protection level U_p - at I_n (8/20)	< 1,5 kV
Follow current I_n	x
Response time t_A	< 25 ns
Residual current I_{pe} at U_{ref}	< 0,2 mA
Thermal decoupler	✓
Torque	3,0 Nm
Back-up fuse (if mains > 125A)	125 A gG
Short-circuit current rating I_{SCCR}	25 kA / 50 Hz
Temperature range	- 40°C ... +70°C
Cross-section of connection wire	min. 6mm ² , max. single strand 35mm ² , multi-strand 25mm ²
Mounting	indoors on top hat fixing rail 35 mm (EN 60715)
Degree of protection	IP 20
Casing material	thermoplastic; extinguishing degree UL 94 V-0
Dimensions	1 TE ... 4 TE
Indication of disconnecter operation	red flag
Permissible humidity	5% - 95%
Additional data for ETITEC B-RC	
Remote signalisation (RC)	✓
Switching capability (RC)	AC: 250V/0.5A; 125V/3A
Cross-section of connection wire (RC)	max. 1.5 mm ²
Torque (RC)	0,25 Nm

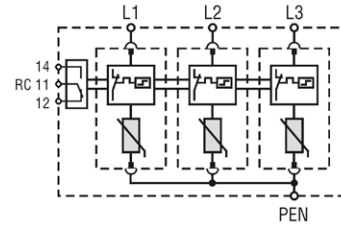
Type of network and nr. of SPD poles

Network	Nr of poles (SPD configuration)
TNC 1 phase	1+0
TNC 3 phase	3+0
TNS 1 phase	2+0 / 1+1
TNS 3 phase	4+0 / 3+1
TT 1 phase	1+1
TT 3 phase	3+1
IT 1 phase	2+0
IT 3 phase	4+0

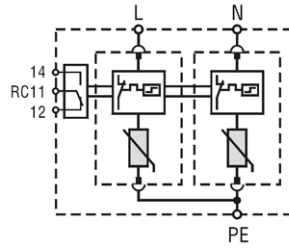
At TNC, TNS, TT systems with $U_n=230V$, recommended U_c value of SPD is 275V.
At IT system, recommended U_c value of SPD is 440V.



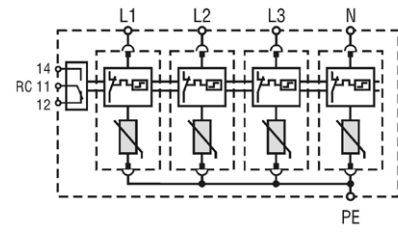
ETITEC B T12 275/7 1+0 RC



ETITEC B T12 275/7 3+0 RC

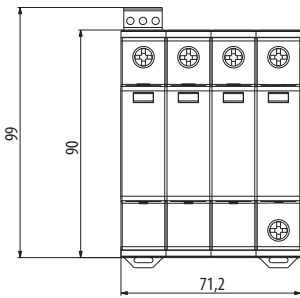


ETITEC B T12 275/7 2+0 RC

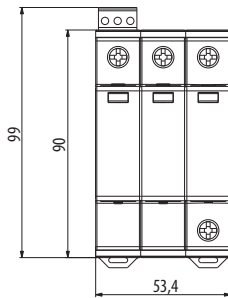


ETITEC B T12 275/7 4+0 RC

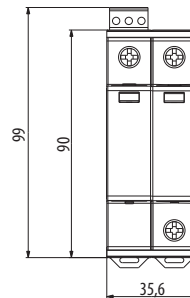
ETITEC B T12 275/7 4+0 RC



ETITEC B T12 275/7 3+0 RC



ETITEC B T12 275/7 2+0 RC



ETITEC B T12 275/7 1+0 RC

