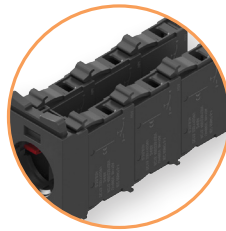


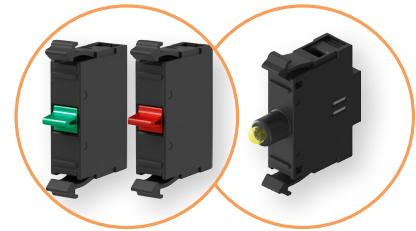
Push-buttons actuators, selector switches, lights and control stations



→ Standard device includes: the module itself, rubber seal, nut

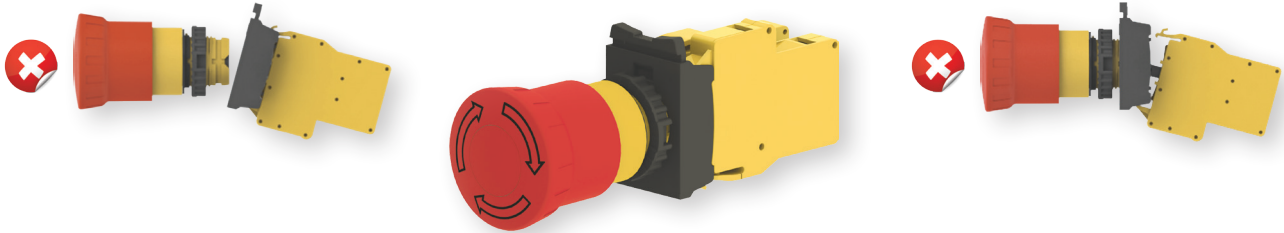


→ Cascade installation option for up to three levels

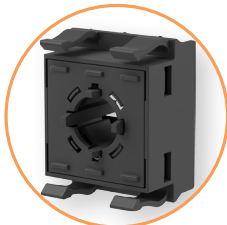


→ Possibility to mount contact blocks as well as "LED" module

Emergency stop button with monitoring contact block



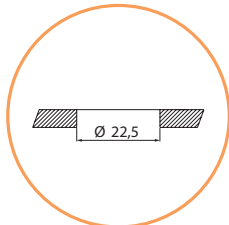
→ The module for fixing the position of the contact blocks: Changes the position of the contact block by pressing once - latch



→ Protection against accidental emergency button



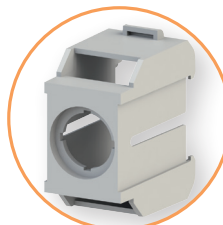
→ Standard mounting diameter Ø22.5mm



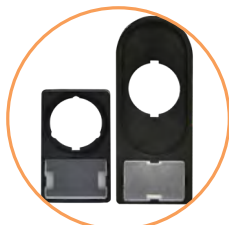
→ Silicone cap for extra protection against dust and moisture



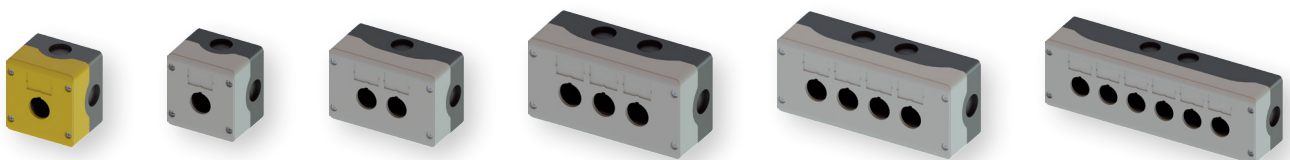
→ Adapter for mounting buttons or lamps on the din rail



→ Marking plate holder



Empty control stations enclosures



→ for installation of push buttons, selector switches, pilot lights

Push buttons , selector switches, pilot lights and control stations

| Buttons, switches and signal lamps | |
|------------------------------------|--|
| Compliance with standards | IEC 60947-5-1, ISO 13850 (EN 418), IEC 60947-5-5 |
| Certify | CE |
| Base material | Polyamide (PA66) or polycarbonate (PC) |
| Degree of protection IP | IP66 and IP52 (PB2I-F/RG) according to IEC 60529 |
| Mechanical life | |
| Buttons | 3 x 10 ⁶ triggers |
| Buttons double | 2 x 10 ⁶ triggers |
| Buttons mushroom | 3 x 10 ⁵ triggers |
| Buttons mushroom-emerg | 1 x 10 ⁵ triggers |
| Switchesency | 1 x 10 ⁶ triggers |
| Applications | Outside or inside |

| Contact blocks | |
|---|--|
| Rated insulation voltage U _i | 690 V |
| Rated insulation voltage pulse U _{imp} | 4 kV |
| IP degree of protection (IEC 60529) | IP20 |
| Conventional thermal current I _{th} | 10 A |
| Conformity to standards | IEC 60947-5-1, ISO 13850 (EN 418), IEC 60947-5-5 |
| Certifications | CE |

| Electrical characteristics according to IEC 60947-5-1 | | | | |
|---|--|--------------------|-----------------------|--------------------|
| | BC...CS-NO/NC | | BC-NC-PBM | |
| | U _e (V AC) | I _e (A) | U _e (V AC) | I _e (A) |
| Application Category AC-15 | 24 | 10 | 24 | 6 |
| | 48 | 10 | 48 | 6 |
| | 60 | 10 | 60 | 6 |
| | 110 | 6 | 110 | 6 |
| | 220 | 3 | 220 | 3 |
| | 380 | 2 | 380 | 2 |
| | 500 | 1,5 | 500 | 1,5 |
| | 600 | 1,2 | 600 | 1,2 |
| Category of DC-13 application | U _e (V DC) | I _e (A) | U _e (V DC) | I _e (A) |
| | 24 | 2,5 | 24 | 2,5 |
| | 48 | 1,4 | 48 | 1,4 |
| | 60 | 1 | 60 | 1 |
| | 110 | 0,55 | 110 | 0,55 |
| | 220 | 0,27 | 220 | 0,27 |
| | 300 | 0,2 | 300 | 0,2 |
| | 600 | 0,1 | 600 | 0,1 |
| UL and CSA compliant design | AC/Heavy duty mode (A600) and DC/Standard mode (Q600) | | - | |
| Contact resistance (IEC 60255) | ≤ 25m Ω | | | |
| Protection against electric shock (IEC 60536) | Class II | | | |
| Cross-section of connectable conductors | from 1x0,5 mm ² to 2x2,5 mm ² | | | |
| Terminal torque | 0,8 Nm | | | |
| Operational temperature | -25°C to 70°C | | | |
| Vibration resistance (IEC 60068-2-6) | 16 g for a frequency range of 40 to 500 Hz. Maximum gap of 0.75 mm (peak to peak) | | | |
| Mechanical life | 1 x 10 ⁶ cycles | | | |

| LED module "LED" | |
|---|---|
| Conformity with standards | IEC 60947-5-1 |
| Operating voltage range | 0,85...1,10 x U _e |
| Degree of protection IP (IEC 60529) | IP20 |
| Consumption (V AC/V DC) | 10 mA |
| Rated insulation voltage U _i (IEC 60947-1) | 2,5 kV |
| Operational temperature range | from -25°C to 70°C |
| Lifetime | at least 100,000 hours |
| The power of light | Red 70 mcd |
| | Yellow 115 mcd |
| | White 275 mcd |
| | Blue 64 mcd |
| | Green 150 mcd |
| Cross-section of conductors to be connected | from 1 x 0,5 mm ² to 2 x 2,5 mm ² |
| Terminal torque | 0,8 Nm |

Features:

- modular design,
- standard mounting diameter Ø22.5mm,
- snap fastening system,
- cascade installation possibility,
- IP66 degree of protection,
- silicone antidust covers.

Flush head pushbuttons, selector switches, non illuminated



Flush head pushbutton (spring return, non illuminated)

| Type | Colour | Code number | Dimensions | Weight (kg) | Packaging (pcs) |
|-----------|----------|-------------|------------|-------------|-----------------|
| NSE-PBF-W | ○ White | 004774000 | | 0,021 | 1/10 |
| NSE-PBF-R | ● Red | 004774001 | | 0,021 | 1/10 |
| NSE-PBF-G | ● Green | 004774002 | | 0,021 | 1/10 |
| NSE-PBF-Y | ● Yellow | 004774003 | | 0,021 | 1/10 |
| NSE-PBF-B | ● Blue | 004774004 | | 0,021 | 1/10 |
| NSE-PBF-C | ● Black | 004774005 | | 0,021 | 1/10 |

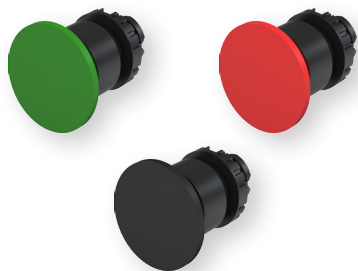
* Important: The holder and contact block are not included in the scope of delivery.



Extended head pushbutton (spring return, non illuminated)

| Type | Colour | Code number | Dimensions | Weight (kg) | Packaging (pcs) |
|-----------|----------|-------------|------------|-------------|-----------------|
| NSE-PBP-W | ○ White | 004774010 | | 0,021 | 1/10 |
| NSE-PBP-R | ● Red | 004774011 | | 0,021 | 1/10 |
| NSE-PBP-G | ● Green | 004774012 | | 0,021 | 1/10 |
| NSE-PBP-Y | ● Yellow | 004774013 | | 0,021 | 1/10 |
| NSE-PBP-B | ● Blue | 004774014 | | 0,021 | 1/10 |
| NSE-PBP-C | ● Black | 004774015 | | 0,021 | 1/10 |

* Important: The holder and contact block are not included in the scope of delivery.



Mushroom pushbutton Ø 40mm (spring return, non illuminated)

| Type | Colour | Code number | Dimensions | Weight (kg) | Packaging (pcs) |
|-----------|---------|-------------|------------|-------------|-----------------|
| NSE-PBM-R | ● Red | 004774020 | | 0,024 | 1/10 |
| NSE-PBM-G | ● Green | 004774021 | | 0,024 | 1/10 |
| NSE-PBM-C | ● Black | 004774022 | | 0,024 | 1/10 |

* Important: The holder and contact block are not included in the scope of delivery.



Mushroom pushbutton Ø 40mm (latch, with key to release, non illuminated)

| Type | Colour/description | Code number | Dimensions | Weight (kg) | Packaging (pcs) |
|-------------|--|-------------|------------|-------------|-----------------|
| NSE-PBM-R-K | ● Red mushroom pushbutton (latch, with key to release) | 004774023 | | 0,09 | 1/10 |

* Important: The holder and contact block are not included in the scope of delivery.



Twin pushbutton (spring return, non illuminated)

| Type | Colour/description | Code number | Dimensions | Weight (kg) | Packaging (pcs) |
|-----------------|----------------------------|-------------|------------|-------------|-----------------|
| NSE-PB2/RG-IO | ● Green/Red (I/O) | 004774030 | | 0,025 | 1/25 |
| NSE-PB2/RG-STSP | ● Green/Red (START/STOP) | 004774031 | | 0,025 | 1/25 |
| NSE-PB2/RG | ● Green/Red | 004774032 | | 0,025 | 1/25 |
| NSE-PB2/WC-IO | ○ White/Black (I/O) | 004774033 | | 0,025 | 1/25 |
| NSE-PB2/WC-STSP | ○ White/Black (START/STOP) | 004774034 | | 0,025 | 1/25 |
| NSE-PB2/WC | ○ White/Black | 004774035 | | 0,025 | 1/25 |
| NSE-PB2/CC-PN | ● Black/Black (+/-) | 004774036 | | 0,025 | 1/25 |
| NSE-PB2/CC-FR | ● Black/Black (1/↓) | 004774037 | | 0,025 | 1/25 |

* Important: The holder and contact block are not included in the scope of delivery.

Push mushroom actuators for emergency stop

| Emergency stop mushroom pushbutton Ø 42 mm (latch, non illuminated) | | | | | | |
|---|--|-------------|------------|-------------|-----------------|--|
| Type | Colour/description | Code number | Dimensions | Weight (kg) | Packaging (pcs) | |
| NSE-PBM-T-R | Red (turn to release) | 004774040 | | 0,049 | 1/10 | |
| NSE-PBM-T-RG | Red (turn to release, with indication) | 004774042 | | | | |
| NSE-PBM-P-R | Red (pull to release) | 004774041 | | | | |
| NSE-PBM-P-RG | Red (pull to release, with indication) | 004774043 | | | | |

* **Important:** The holder and contact block are not included in the scope of delivery.

| Two-position switch selector "0-1" (non illuminated) | | | | | | |
|--|---------------------------|--------|-------------|------------|-------------|-----------------|
| Type | Colour/description | Scheme | Code number | Dimensions | Weight (kg) | Packaging (pcs) |
| NSE-S2-F45 | Black 45° (latch) | | 004774080 | | 0,025 | 1/10 |
| NSE-S2-F90 | Black 90° (latch) | | 004774081 | | 0,025 | |
| NSE-S2-R45 | Black 45° (spring return) | | 004774082 | | 0,025 | |
| NSE-S2-R90 | Black 90° (spring return) | | 004774083 | | 0,025 | |

* **Important:** The holder and contact block are not included in the scope of delivery.

| Switch key selector "0-1" (latch, non illuminated) | | | | | | |
|--|--------------------|--------|-------------|------------|-------------|-----------------|
| Type | Colour/description | Scheme | Code number | Dimensions | Weight (kg) | Packaging (pcs) |
| NSE-S2K-F45 | Black 45° (latch) | | 004774088 | | 0,087 | 1/10 |

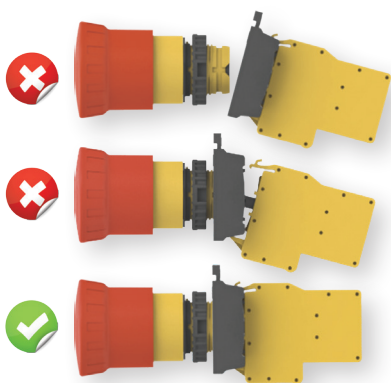
* **Important:** The holder and contact block are not included in the scope of delivery.

CSW-CK2 / CK3
NSE-S2 / S3

| Three-position switch selector "1-0-2" (non illuminated) | | | | | | |
|--|---------------------------------------|--------|-------------|------------|-------------|-----------------|
| Type | Colour/description | Scheme | Code number | Dimensions | Weight (kg) | Packaging (pcs) |
| NSE-S3-F45 | Black 45° (latch) | | 004774084 | | 0,025 | 1/10 |
| NSE-S3-R45 | Black 45° (return) | | 004774085 | | 0,025 | |
| NSE-S3-RL45 | Black, 45° (spring return left side) | | 004774086 | | 0,025 | |
| NSE-S3-RR45 | Black, 45° (spring return right side) | | 004774087 | | 0,025 | |

* **Important:** The holder and contact block are not included in the scope of delivery.

Mushroom actuators for emergency stop with monitoring function



Application - metering and signalling panels, control panels.

Emergency mushroom actuators are one of the most common and important devices for emergency shutdown and indication in case of emergency situations arising in electrical equipment circuits and control panels.

Warning: if the components are not installed correctly, the function of the appliance may be impaired. This can result in an emergency shutdown blockage, exposing users to additional risks.

- The NSE-BC-NC-PB self-monitoring contact block is designed to provide a higher level of installation safety and control. Its use with the NSE-PBM-T-RGM/NSE-PBM-P-RGM range of Emergency Stop pushbuttons provides electrical interlocking in the event of incomplete or incorrectly assembled Emergency Stop button components.

- Developed in accordance with international standards IEC 60947-5-5 and UL 508

Emergency stop pushbutton Ø 42 mm, with self-monitoring function (latch, non illuminated)

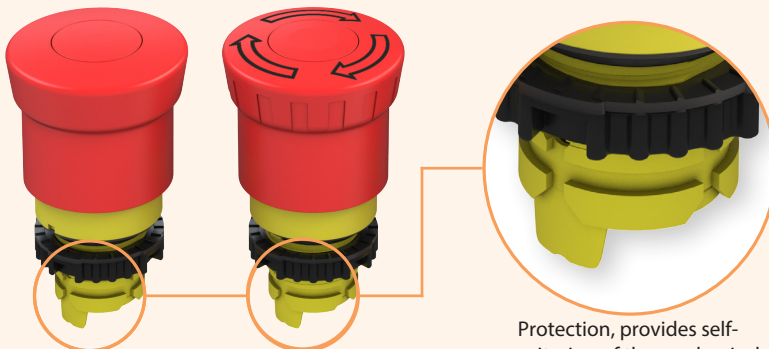
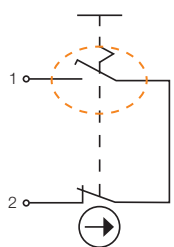
| Type | Colour/ scription | Code number | Dimensions | Weight (kg) | Packaging (pcs) |
|---------------|---|-------------|------------|-------------|-----------------|
| NSE-PBM-T-RGM | Red ● (turn to release, with indication, self monitoring option) | 004774044 | | 0,058 | 1/10 |
| NSE-PBM-P-RGM | Red ● (pull-out to release, with indication, self monitoring option) | 004774045 | | 0,058 | 1/10 |

* **Important:** The holder and contact block are not included in the scope of delivery.

Contact block with monitoring function

| Type | Description | Code number | Dimensions | Weight (kg) | Packaging (pcs) |
|---------------|-------------------|-------------|------------|-------------|-----------------|
| NSE-BC-NC-PBM | 1NC contact block | 004774114 | | 0,023 | 1/10 |

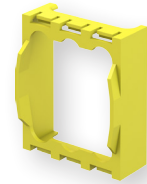
Circuit diagram



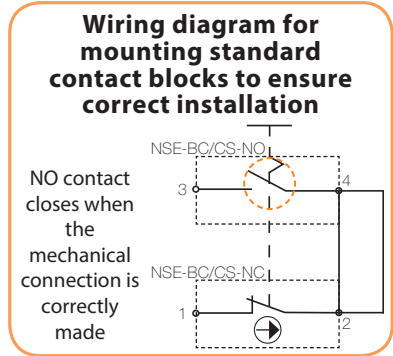
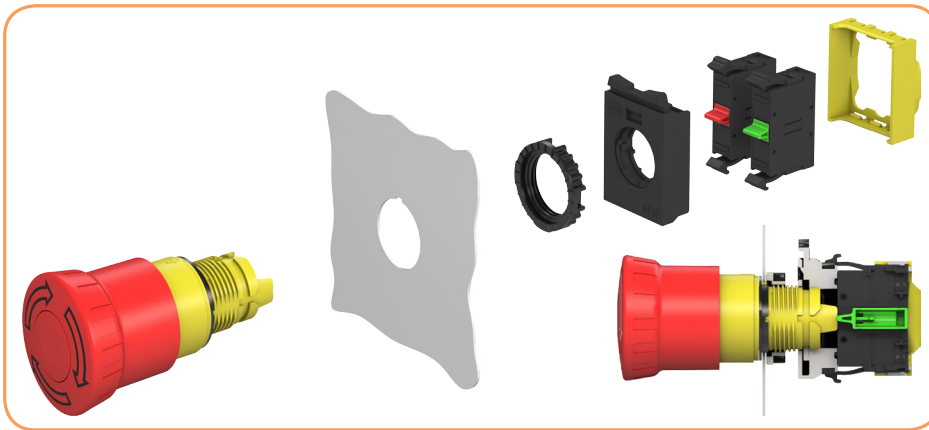
Protection, provides self-monitoring of the mechanical assembly.

When using standard contact blocks, the NSE-PBMH retainer must be used. The contact block retainer allows all elements to be assembled into a single unit, provides greater safety and reduces the possibility of operating errors.

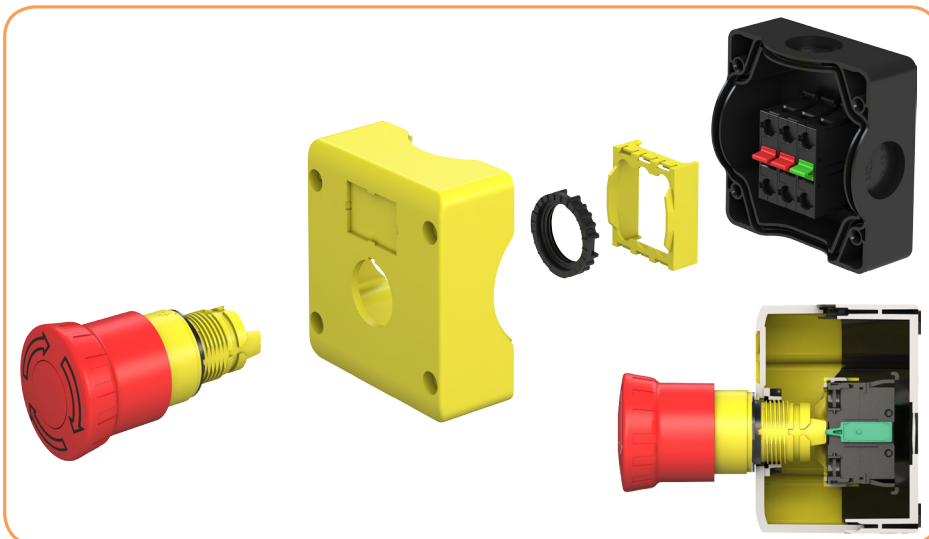
| Pin block retainer | | | | | |
|--------------------|--|-------------|---|-------------|-----------------|
| Type | Description | Code number | Compatibility | Weight (kg) | Packaging (pcs) |
| NSE-PBMH | Contact block retainer for checking the mechanical assembly. | 004774046 | Max number of conduit blocks: 3 NSE-BC/CS-NO/NC blocks. Note: Does not allow overlapping of contacts. | 0,002 | 1/1 |



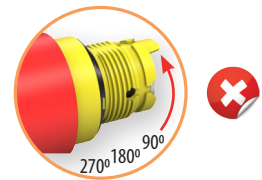
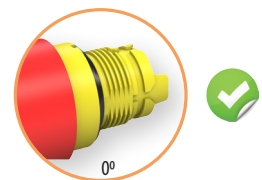
Installation of standard contact blocks when panel mounting



Installation of standard contact blocks for enclosure mounting



When installing the Emergency Stop pushbuttons
When installing the emergency stop pushbuttons, this installation makes it possible to check the correct assembly



Flush head pushbuttons, selector switches, illuminated



| Flush head pushbutton (spring return, illuminated) | | | | | |
|--|----------|-------------|------------|-------------|-----------------|
| Type | Colour | Code number | Dimensions | Weight (kg) | Packaging (pcs) |
| NSE-PBFI-W | ○ White | 004774050 | | 0,021 | 1/10 |
| NSE-PBFI-R | ● Red | 004774051 | | 0,022 | 1/10 |
| NSE-PBFI-G | ● Green | 004774052 | | 0,022 | 1/10 |
| NSE-PBFI-Y | ● Yellow | 004774053 | | 0,022 | 1/10 |
| NSE-PBFI-B | ● Blue | 004774054 | | 0,022 | 1/10 |

Important: The holder and contact block are not included in the scope of delivery.



| Extended head pushbutton (spring return, illuminated) | | | | | |
|---|---------|-------------|------------|-------------|-----------|
| Type | Colour | Code number | Dimensions | Weight (kg) | Packaging |
| NSE-PBPI-R | ● Red | 004774060 | | 0,021 | 1/10 |
| NSE-PBPI-G | ● Green | 004774061 | | 0,021 | 1/10 |

Important: The holder and contact block are not included in the scope of delivery.



| Mushroom pushbutton Ø 40mm (spring return, illuminated) | | | | | |
|---|--------|-------------|------------|-------------|-----------------|
| Type | Colour | Code number | Dimensions | Weight (kg) | Packaging (pcs) |
| NSE-PBMI-R | ● Red | 004774062 | | 0,026 | 1/10 |

Important: The holder and contact block are not included in the scope of delivery.



| Twin pushbutton (spring return, illuminated) | | | | | |
|--|----------------------------|-------------|------------|-------------|-----------------|
| Type | Colour/description | Code number | Dimensions | Weight (kg) | Packaging (pcs) |
| NSE-PB2I/RG-I/O | ● Green/Red (I/O) | 004774070 | | 0,025 | 1/25 |
| NSE-PB2I/RG-STSP | ● Green/Red (START/STOP) | 004774071 | | 0,025 | 1/25 |
| NSE-PB2I/RG | ● Green/Red | 004774072 | | 0,025 | 1/25 |
| NSE-PB2I/WC-I/O | ○ White/Black (I/O) | 004774073 | | 0,025 | 1/25 |
| NSE-PB2I/WC-STSP | ○ White/Black (START/STOP) | 004774074 | | 0,025 | 1/25 |
| NSE-PB2I/WC | ○ White/Black | 004774075 | | 0,025 | 1/25 |
| NSE-PB2I/CC-PN | ● Black/Black (+/-) | 004774076 | | 0,025 | 1/25 |
| NSE-PB2I/CC-FR | ● Black/Black(↑/↓) | 004774077 | | 0,025 | 1/25 |

Important: The holder and contact block are not included in the scope of delivery.



| Twin pushbutton (spring return, illuminated), IP52 | | | | | |
|--|--------------------|-------------|------------|-------------|-----------------|
| Type | Colour/description | Code number | Dimensions | Weight (kg) | Packaging (pcs) |
| NSE-PB2I-F/RG-I/O | ● Green/Red (I/O) | 004774078 | | 0,025 | 1/10 |

Important: The holder and contact block are not included in the scope of delivery.



| Two-position switch selector "0-1" (illuminated) | | | | | | |
|--|---------------------|--------|-------------|------------|-------------|-----------------|
| Type | Colour/description | Scheme | Code number | Dimensions | Weight (kg) | Packaging (pcs) |
| NSE-S2I-F90-R | ● Red 90° (latch) | | 004774090 | | 0,02 | 1/10 |
| NSE-S2I-F90-G | ● Green 90° (latch) | | 004774091 | | 0,02 | |

Important: The holder and contact block are not included in the scope of delivery.

module "1-0-2"



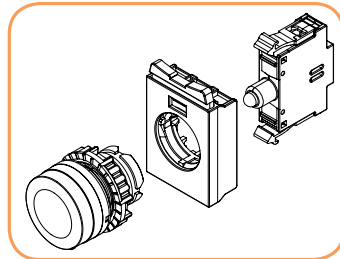
| Three-position switch selector "1-0-2" (illuminated) | | | | | | |
|--|----------------------|--------|-------------|------------|-------------|-----------------|
| Type | Colour/description | Scheme | Code number | Dimensions | Weight (kg) | Packaging (pcs) |
| NSE-S3I-F45-R | ● Red 45° (latch) | | 004774092 | | 0,02 | 1/10 |
| NSE-S3I-F45-G | ● Green 45° (latch) | | 004774093 | | 0,02 | |
| NSE-S3I-F45-Y | ● Yellow 45° (latch) | | 004774094 | | 0,02 | |

Important: The holder and contact block are not included in the scope of delivery.

Caps for LED module

| Caps for LED module | | | | | | |
|---------------------|----------|-------------|------------|-------------|----------------|--|
| Type | Colour | Code number | Dimensions | Weight (kg) | Packaging (kg) | |
| NSE-ILM-HD-W | ○ White | 004774130 | | 0,016 | 1/10 | |
| NSE-ILM-HD-R | ● Red | 004774131 | | 0,016 | 1/10 | |
| NSE-ILM-HD-G | ● Green | 004774132 | | 0,016 | 1/10 | |
| NSE-ILM-HD-Y | ● Yellow | 004774133 | | 0,016 | 1/10 | |
| NSE-ILM-HD-B | ● Blue | 004774134 | | 0,016 | 1/10 | |
| NSE-ILM-HD-O | ● Orange | 004774135 | | 0,016 | 1/10 | |

* **Important:** The holder and LED module are not included.



Accessories

| Holder for contact and LED modules | | | | | |
|------------------------------------|---------------------------|-------------|------------|-------------|-----------------|
| Type | Description | Code number | Dimensions | Weight (kg) | Packaging (pcs) |
| NSE-FL3/10 | 3 module holder (10 pcs.) | 004774100 | | 0,013 | 10 |
| NSE-FL3 | 3 module holder (1 pc.) | 004774101 | | 0,013 | 1/25 |
| NSE-FL5/5 | 5 module holder (5 pcs.) | 004774102 | | 0,02 | 5 |
| NSE-FL5 | 5 module holder (1 pc.) | 004774103 | | 0,02 | 1 |



| Contacts module with screw terminals | | | | | |
|--------------------------------------|-----------------------------|-------------|------------|-------------|-----------------|
| Type | Description | Code number | Dimensions | Weight (kg) | Packaging (pcs) |
| NSE-BC-NO/10 | 1NO contact module (10 pcs) | 004774110 | | 0,015 | 10 |
| NSE-BC-NO | 1NO contact module (1 pc) | 004774111 | | 0,015 | 1/25 |
| NSE-BC-NC/10 | 1NC contact module (10 pcs) | 004774112 | | 0,015 | 10 |
| NSE-BC-NC | 1NC contact module (1pc) | 004774113 | | 0,015 | 1/25 |



| LED module "LED" | | | | | | |
|------------------|----------|-----------|-------------|------------|-------------|-----------------|
| Type | Colour | Voltage | Code number | Dimensions | Weight (kg) | Packaging (pcs) |
| NSE-ILM-024U-W | ○ White | 24V AC/DC | 004774120 | | 0,016 | 1/10 |
| NSE-ILM-024U-R | ● Red | 24V AC/DC | 004774121 | | | |
| NSE-ILM-024U-G | ● Green | 24V AC/DC | 004774122 | | | |
| NSE-ILM-024U-Y | ● Yellow | 24V AC/DC | 004774123 | | | |
| NSE-ILM-024U-B | ● Blue | 24V AC/DC | 004774124 | | | |
| NSE-ILM-240V-W | ○ White | 240 V AC | 004774125 | | | |
| NSE-ILM-240V-R | ● Red | 240 V AC | 004774126 | | | |
| NSE-ILM-240V-G | ● Green | 240 V AC | 004774127 | | | |
| NSE-ILM-240V-Y | ● Yellow | 240 V AC | 004774128 | | | |
| NSE-ILM-240V-B | ● Blue | 240 V AC | 004774129 | | | |



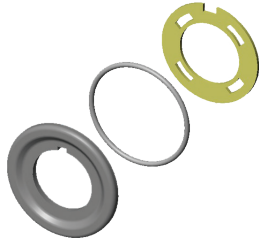


| Latch module for spring return module | | | | | |
|---------------------------------------|--|-------------|------------|-------------|------------------|
| Type | Description | Code number | Dimensions | Weight (kg) | Packaging (pcs.) |
| NSE-BC-LF | Changes the position of the contact module by pressing once - latch funktion | 004774115 | | 0,019 | 1 |

*** Important:**

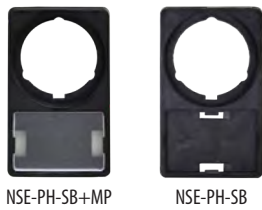
Mechanical push-on/push-off block for contact blocks mounted on buttons: CSW-BF, CSW-BFI, CSW-BS, CSW-BSI, CSW-BGA, CSW-BC, CSW-BCI

Note: use ONLY with contact block BC01F (1NC) and NOT with NO contact block!!!



| Adaptor ring | | | | | |
|--------------|-----------------------|-------------|------------|-------------|----------------|
| Type | Description | Code number | Dimensions | Weight (kg) | Packaging (kg) |
| NSE-RR-30/22 | From Ø30mm to Ø22.5mm | 004774140 | | 0,006 | 1 |

Label plates



NSE-PH-SB+MP

NSE-PH-SB

| Type | Description/Compatibility | Code number | Dimensions | Weight (kg) | Packaging (kg) |
|--------------|---|-------------|------------|-------------|----------------|
| NSE-PH-SB+MP | Label + marking plate 27 x 18 mm with transparent cover | 004774141 | | 0,004 | 5 |
| NSE-PH-SB | Label without transparent cover | 004774143 | | | |



NSE-PH-DB+MP

NSE-PH-DB

| | | | | | |
|--------------|---|-----------|--|-------|---|
| NSE-PH-DB+MP | Label + marking plate 27 x 18 mm with transparent cover, for twin push button modul | 004774142 | | 0,004 | 5 |
| NSE-PH-DB | Label without transparent cover | 004774144 | | | |

Nameplate ring



| Type | Description/Compatibility | Code number | Dimensions | Weight (kg) | Packaging (kg) |
|------------|---------------------------|-------------|------------|-------------|----------------|
| NSE-PL-EMG | ● Emergency Stop | 004774145 | | 0,009 | 5 |

Accessories

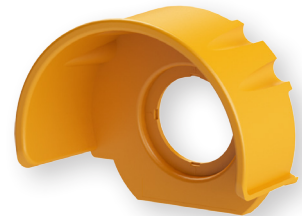
| Protective silicone cap | | | | | |
|-------------------------|--|-------------|------------|-------------|-----------------|
| Type | Compatibility | Code number | Dimensions | Weight (kg) | Packaging (pcs) |
| NSE-SPC-PBF | Flush head buttons and signal lamps | 004774170 | | 0,005 | 5 |
| NSE-SPC-PBP | Extended head pushbuttons and signal lamps | 004774171 | | 0,005 | 5 |
| NSE-SPC-PB2* | Twinhead pushbuttons | 004774172 | | 0,005 | 5 |
| NSE-SPC-PB2-F* | IP52 twin pushbutton | 004774173 | | 0,006 | 5 |

* **Important:** Not compatible with push-button posts



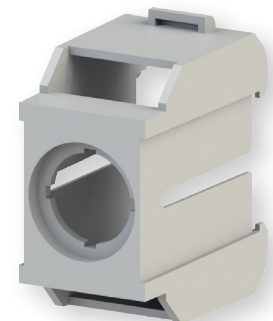
| Plug | | | | | |
|--------|----------------|-------------|------------|-------------|-----------------|
| Type | Description | Code number | Dimensions | Weight (kg) | Packaging (pcs) |
| NSE-HP | Plug Ø 22.5 mm | 004774174 | | 0,008 | 5 |

| ES protection | | | | | |
|---------------|--|-------------|------------|-------------|-----------------|
| Type | Description | Code number | Dimensions | Weight (kg) | Packaging (pcs) |
| NSE-PC-PBM | Protection against accidental pressing of the emergency button | 004774175 | | 0,027 | 1 |



* **Important:** Only applicable for NSE-CS1-Y. You could install this accessory with other control stations models but you will need to disenable one hole closer this accessory

| Adapter for mounting buttons and lamps actuators on din rail | | | | | |
|--|---|-------------|------------|-------------|-----------------|
| Type | Description | Code number | Dimensions | Weight (kg) | Packaging (pcs) |
| NSE-ADR-1M | Allows the button/signal lamp/switch to be mounted on a 35mm DIN rail. Note: Does not allow the following accessories to be used: - Self-monitoring contact block (BCM01F-CSW); - 5-module contact block holder. | 004774176 | | 0,033 | 1 |

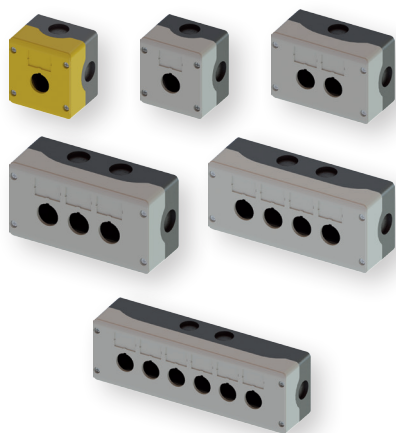


* **Important!** Not compatible with the 5 module contact block holder.

| Assembly tool | | | | | |
|---------------|------------------------|-------------|-------------|-----------------|--|
| Type | Description | Code number | Weight (kg) | Packaging (pcs) | |
| NSE-FRT | Assembly tool for ring | 004774177 | 0,025 | 1 | |



Enclosures for push-button control stations



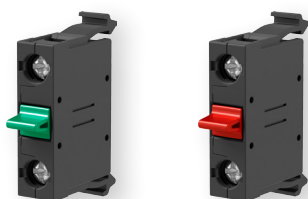
Push-button stations

| | |
|-------------------------------------|--|
| Conformity to standards | IEC 60947-5-1, IEC 50102, IEC 60529, UL 508, UL 50 |
| Certificates | CE |
| Degree of protection IP (IEC 60529) | IP66 (NEMA 4X) |
| Operating temperature | -25°C to 70°C |
| Material | Polycarbonate (cover and base) |
| Colour | Grey (RAL 7035) or yellow (RAL 1003) |
| Base colour | Black (RAL 9005) |
| Cable entry | ØM20 / PG13,5 / 1/2" e ØM16 / 3/8" |
| Application | External/internal |

Empty button control station

| Type | Description | Colour of enclosure | Code number | Weight (kg) | Packaging (pcs) |
|------------|--------------------------------|---------------------|-------------|-------------|-----------------|
| NSE-CS1-Y | Housing with 1 hole, emergency | Yellow-black | 004774150 | 0,13 | 1 |
| NSE-CS1-GR | 1-hole housing | Grey-black | 004774151 | 0,13 | 1 |
| NSE-CS2-GR | 2-holes housing | Grey-black | 004774152 | 0,17 | 1 |
| NSE-CS3-GR | 3-holes housing | Grey-black | 004774153 | 0,2 | 1 |
| NSE-CS4-GR | 4-holes housing | Grey-black | 004774154 | 0,25 | 1 |
| NSE-CS6-GR | 6-holes housing | Grey-black | 004774155 | 0,32 | 1 |

Accessories for enclosures



Contact block for enclosure mounting

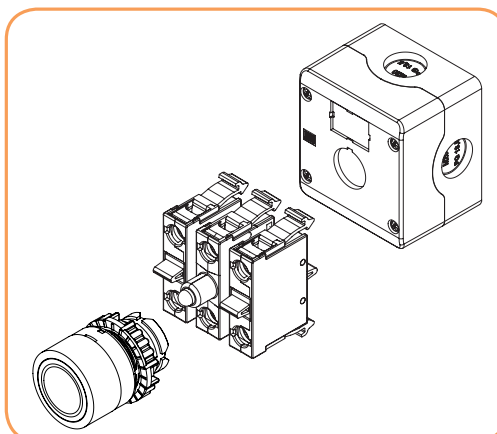
| Type | Description | Code number | Dimensions | Weight (kg) | Packaging (pcs) |
|--------------|-------------------|-------------|------------|-------------|-----------------|
| NSE-BC/CS-NO | 1NO contact block | 004774156 | | 0,15 | 1 |
| | | | | | |
| NSE-BC/CS-NC | 1NC contact block | 004774157 | | 0,15 | 1 |

*** Important:** The contact blocks do not require a contact block holder to be mounted in the enclosure. The contact blocks are fixed into the base of the enclosure.

LED module for enclosure mounting

| Type | Colour | Voltage | Code number | Dimensions | Weight (kg) | Packaging (pcs) |
|-------------------|--------|-----------|-------------|------------|-------------|-----------------|
| NSE-ILM-CS-024U-W | White | 24V AC/DC | 004774158 | | 0,016 | 1/10 |
| NSE-ILM-CS-024U-R | Red | 24V AC/DC | 004774159 | | | |
| NSE-ILM-CS-024U-G | Green | 24V AC/DC | 004774160 | | | |
| NSE-ILM-CS-024U-Y | Yellow | 24V AC/DC | 004774161 | | | |
| NSE-ILM-CS-024U-B | Blue | 24V AC/DC | 004774162 | | | |
| NSE-ILM-CS-240V-W | White | 240V AC | 004774163 | | | |
| NSE-ILM-CS-240V-R | Red | 240V AC | 004774164 | | | |
| NSE-ILM-CS-240V-G | Green | 240V AC | 004774165 | | | |
| NSE-ILM-CS-240V-Y | Yellow | 240V AC | 004774166 | | | |
| NSE-ILM-CS-240V-B | Blue | 240V AC | 004774167 | | | |

*** Important:** The LED module holder is not required for fitting the LED modules into the enclosure. The LED modules are fixed into the base of the enclosure.



Assembly configurations

| Assembly configurations | | | | |
|---|----------------------------------|--|---------------------|---------------------------------------|
| Type | Illuminate switches and switches | Switches and switches without illumination | Illuminated buttons | |
| | NSE-S2I / S3I | NSE-S2 / S3 / S2K | NSE-PB2I | NSE-PBM, NSE-PB2I-F, NSE-PBF, NSE-PBI |
| Max. number of contacts | Max. 4 | Max. 6 | Max. 4 | Max. 6 |
| 3-module holder NSE-FL3 | | | | |
| Max. number of contacts | Max. 4 | Max. 6 | Max. 4 | Max. 6 |
| 5 module holder ¹ NSE-FL5 | | | | |
| Type | Buttons without Illumination | | | |
| | NSE-PBM-T/P | NSE-PB2 | NSE-PBF | NSE-PBM, NSE-PBP |
| Max. number of contacts | Max. 4 | Max. 4 | Max. 6 | Max. 6 |
| 3 module holder NSE-FL3 | | | | |
| Max. number of contacts | - | Max. 4 | Max. 6 | Max. 6 |
| 5 module holder ² NSE-FL5 | - | | | |

1 Only use illumination blocks in the middle position of the NSE-FL5 holder

2 Do not use self-controlling contact blocks with the NSE-FL5 holder;

2 Do not use emergency buttons with the NSE-FL5 flange

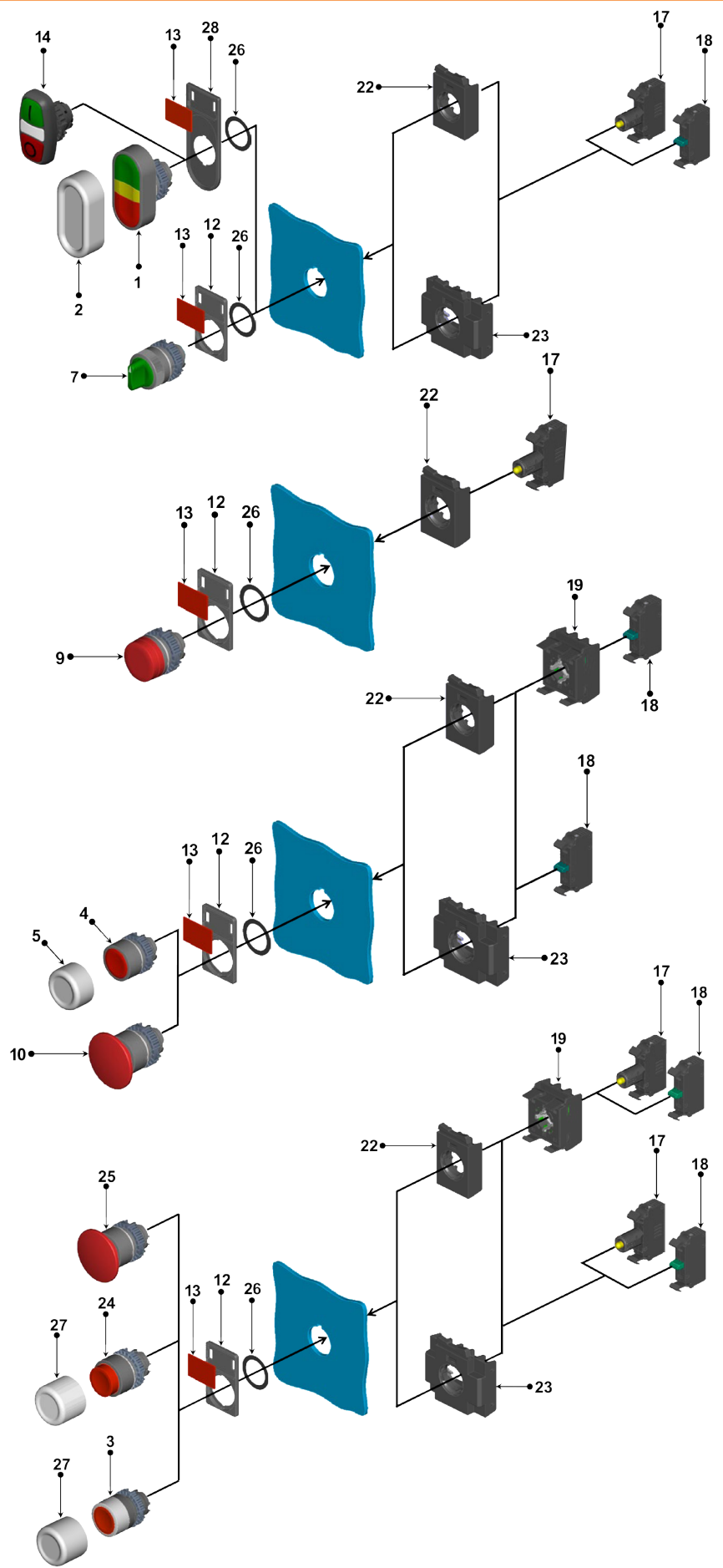
| | | | |
|--|--------------------------|--|---|
| | NSE-BC contact blocks | | Mushroom button contact block with self-monitoring function NSE-BC-NC-PBM |
| | LED module "LED" NSE-ILM | | Pin block retainer |
| | | | Installation is not allowed |

Mounting

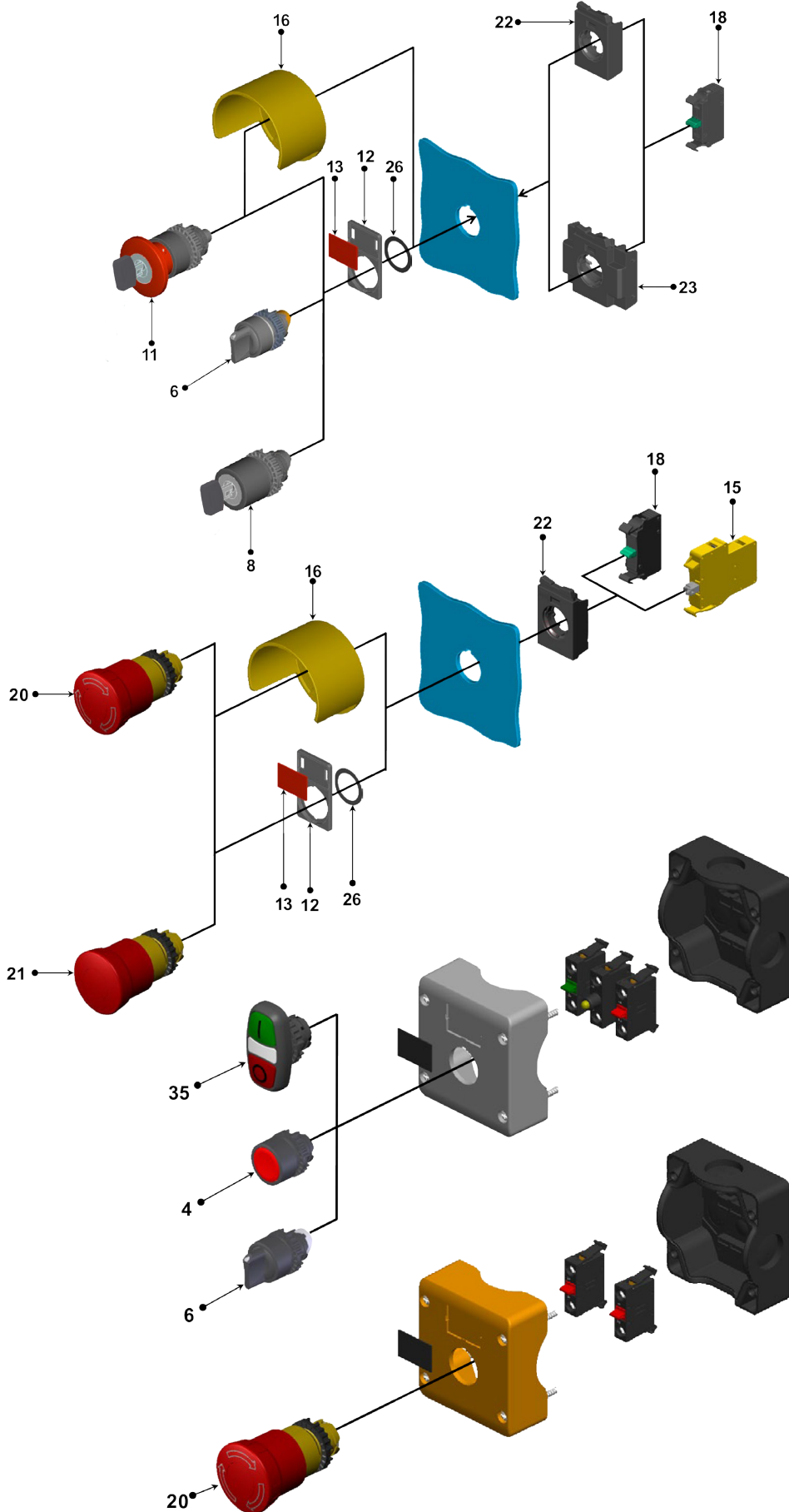
ETISIG

Legend

| Nº | Descriptiona |
|----|--|
| 1 | Twin IP52 push button actuator |
| 2 | Protective silicone cap for dual button |
| 3 | Button module with illumination |
| 4 | Flush head actuator |
| 5 | Protective silicone cap for flush-mounted button actuator |
| 6 | Switch/switch actuator |
| 7 | Illuminated switch/switch actuator |
| 8 | Switch/Key-operated switch actuator |
| 9 | Signal lamp actuator |
| 10 | Mushroom actuator |
| 11 | Mushroom actuator with key |
| 12 | Button key module badge |
| 13 | Marking plate 27x18mm |
| 14 | IP66 twin push button actuator |
| 15 | Mushroom actuator contact block with self-monitoring function |
| 16 | Protection against accidental pressing of the emergency button |
| 17 | LED module "LED" |
| 18 | Contact block |
| 19 | Position locking module for contact blocks |
| 20 | Mushroom actuator, twist-off |
| 21 | Mushroom actuator, retractable |
| 22 | 3 module holder for contact blocks and LED modules |
| 23 | 5 Modular contact blocks and LED module holder |
| 24 | Illuminated raishead actuator |
| 25 | Mushroom actuator |
| 26 | Sealing ring |
| 27 | Protective silicone cap for illuminated flushhead and raisedhead actuator. |
| 28 | Marking plate for twin button module |

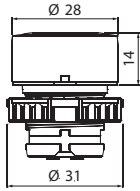


Mounting

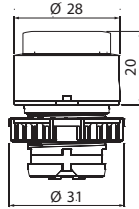


Dimensions, mounting

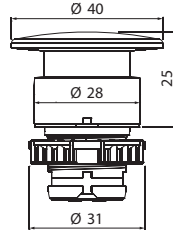
Flush head pushbutton



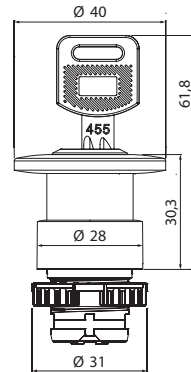
Raishead pushbutton



Mushroom button (Ø40 mm)



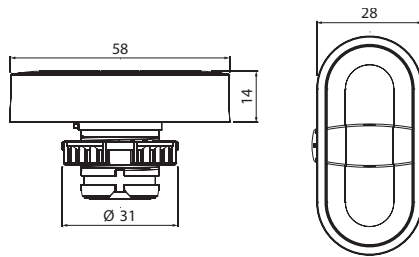
Mushroom button Ø40 mm (with key)



Twin pushbutton actuator



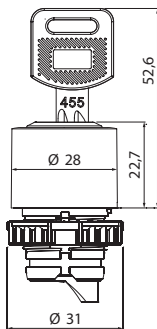
Twin IP52 illuminated pushbutton actuator



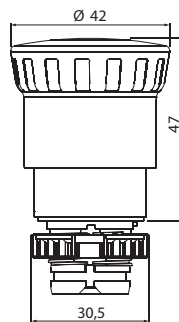
Switch key selector Two-position "0-1", Three-position "1-0-2"



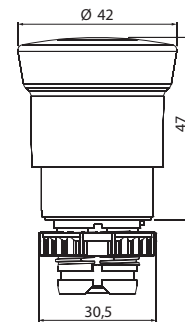
Two-position switch key selector "0-1",



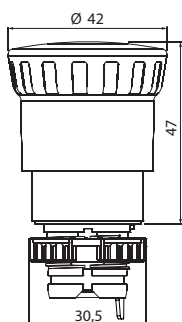
Emergency mushroom push-button actuator Ø42 mm (turn to release)



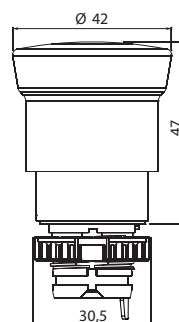
Mushroom emergency actuator Ø42m (pull-out to release)



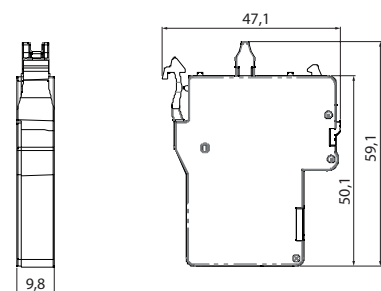
Mushroom actuator Ø42mm, self-monitoring function by turn to release)



Mushroom actuator Ø42 mm, self-monitoring function (pull-out to release)



Contact block for mushroom actuator with self-monitoring function

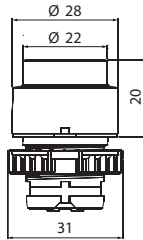


Dimensions, mounting

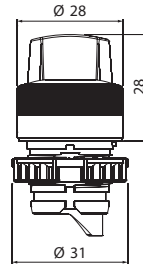
Illuminated flush head actuator



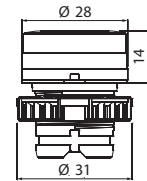
Illuminated raised head actuator



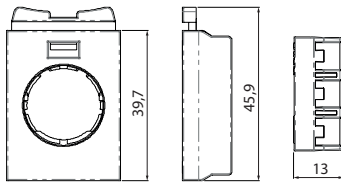
Illuminated two/three-position selector



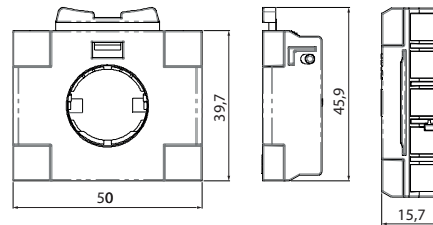
Indicator lights for LED modules



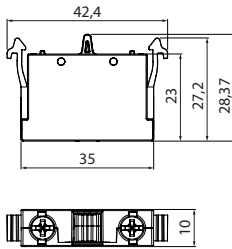
3 Modular LED actuator and contact block holder



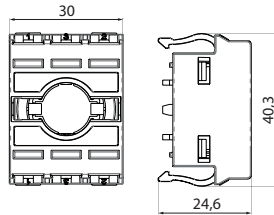
5 Modular LED actuator and contact block holder



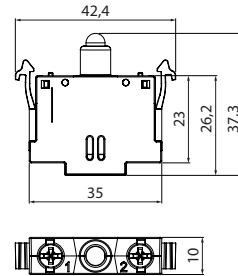
Contacts module with screw terminals



Latch module for spring return module

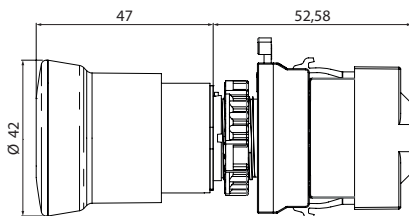


LED module

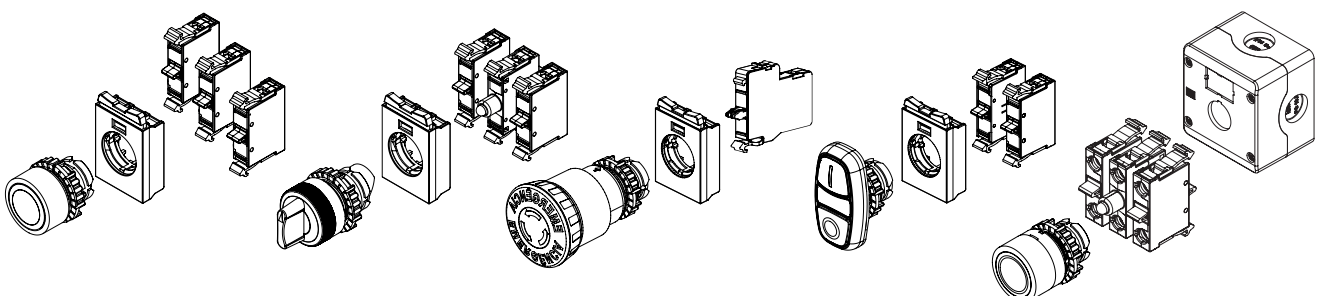
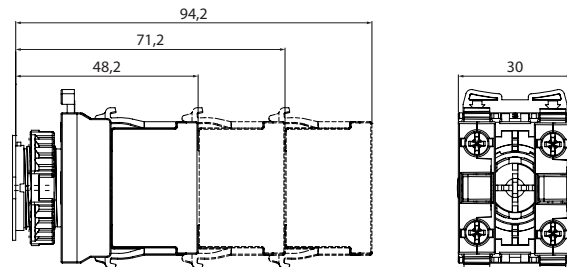


Mushroom emergency button kit:

- Mushroom emergency button
- 3 modular contact block holder
- Contact blocks
- Modul retainer

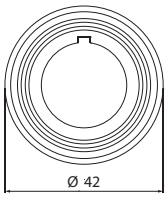


Installation of contact blocks 1, 2, 3 level

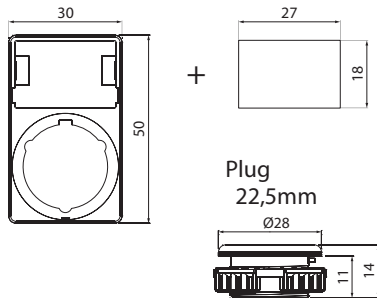


Dimensions, mounting

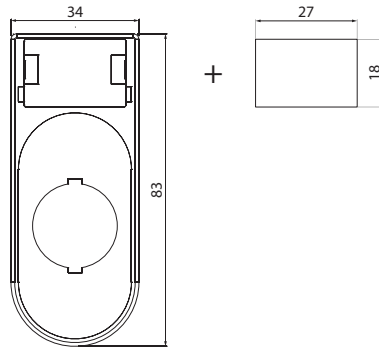
Adapter ring



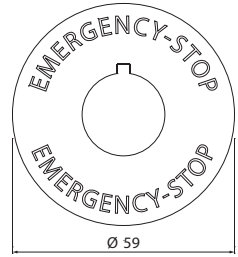
Label plate holder + label plate



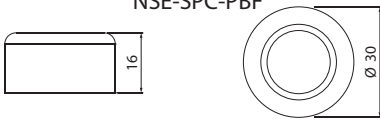
Label plate holder for twin button + IP52 label plate



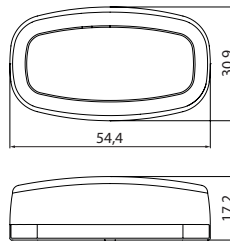
Name plate ring



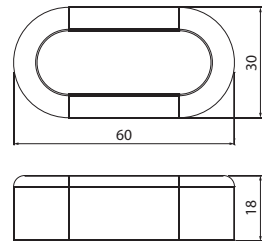
Protective silicone cap NSE-SPC-PBF



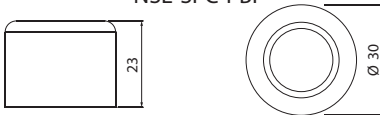
Protective silicone cap NSE-SPC-PB2



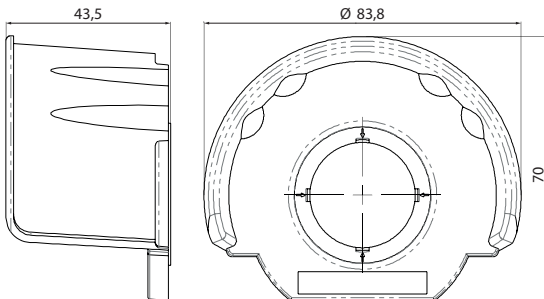
Protective silicone cap NSE-SPC-PB2-F



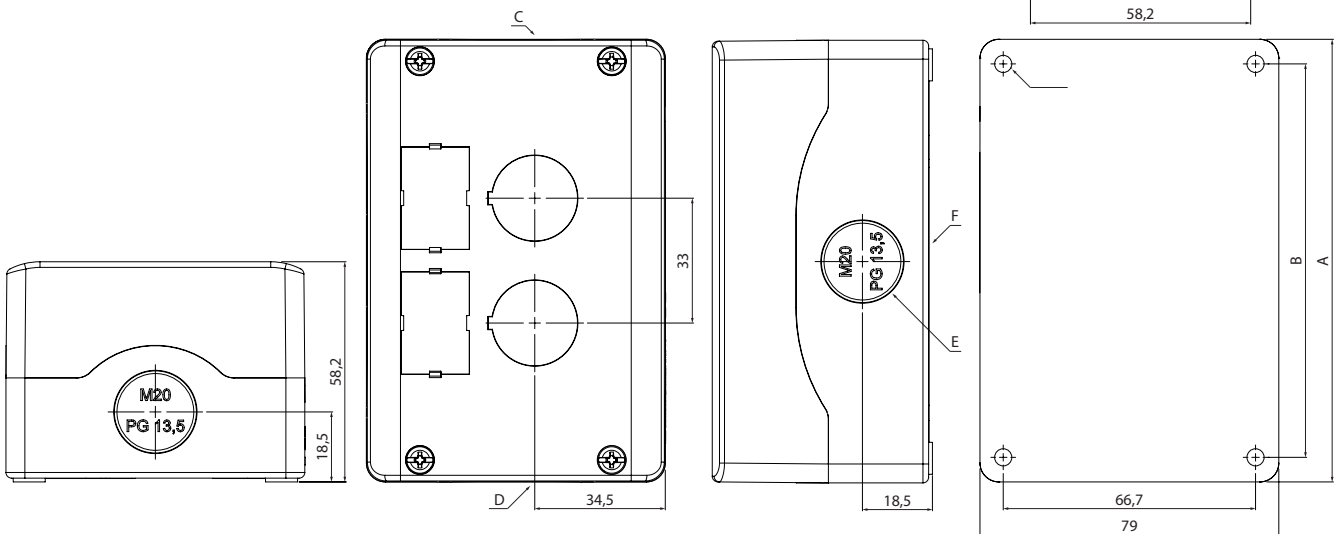
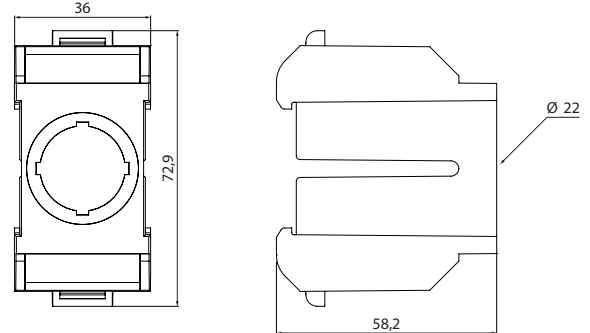
Protective silicone cap NSE-SPC-PBP



Protection against accidental pressing of the emergency button



Adapter for mounting buttons actuator and lamps on din rail



Cases

| No. of holes | A | B | Cable entry | | | |
|--------------|-----|------|----------------|----------------|----------------|---------------|
| | | | C (bottom) | D (above) | E (sideways) | F (with base) |
| 1 | 74 | 66,7 | 1x ØM20/PG13,5 | 1x ØM20/PG13,5 | 1x ØM20/PG13,5 | 2x ØM16 |
| 2 | 117 | 104 | 1x ØM20/PG13,5 | 1x ØM20/PG13,5 | 1x ØM20/PG13,5 | 2x ØM16 |
| 3 | 150 | 137 | 1x ØM20/PG13,5 | 1x ØM20/PG13,5 | 2x ØM20/PG13,5 | 2x ØM16 |
| 4 | 183 | 170 | 1x ØM20/PG13,5 | 1x ØM20/PG13,5 | 2x ØM20/PG13,5 | 2x ØM16 |
| 6 | 249 | 236 | 1x ØM20/PG13,5 | 1x ØM20/PG13,5 | 2x ØM20/PG13,5 | 2x ØM16 |