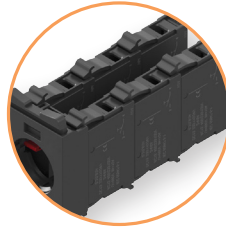


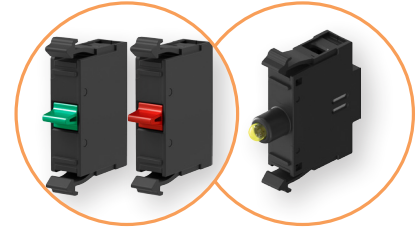
Push buttons, selector switches, pilot lights and control stations



→ Standard device includes: the module itself, rubber seal, nut

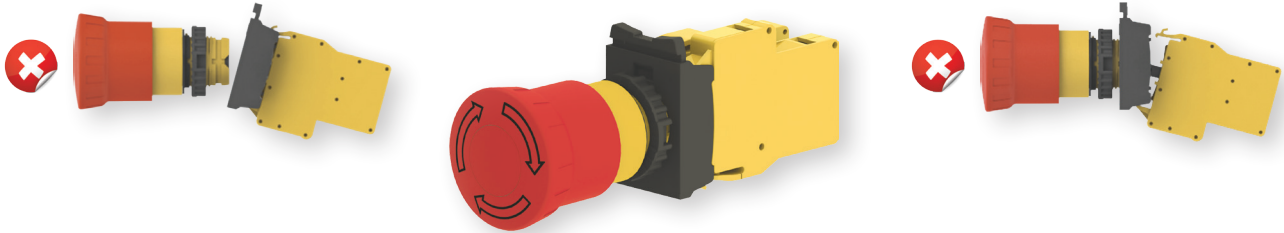


→ Cascade installation option for up to three levels



→ Possibility to mount contact blocks as well as "LED" module

Emergency stop button with monitoring contact block



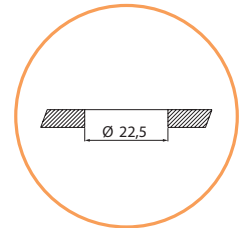
→ The module for fixing the position of the contact blocks: Changes the position of the contact block by pressing once



→ Protection against accidental pressing of the emergency button



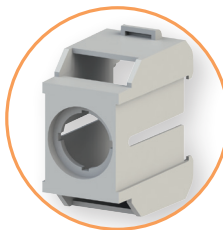
→ Standard mounting diameter Ø22.5mm



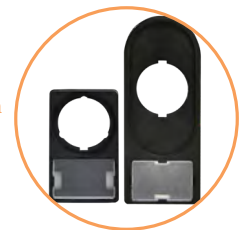
→ Silicone cap for extra protection against dust and moisture



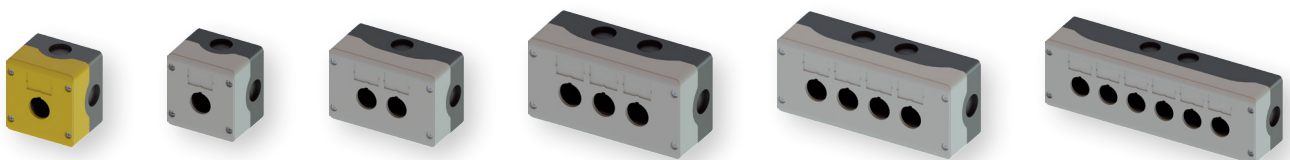
→ Adapter for mounting buttons or lamps on the din rail



→ Marking plate holder 27x18 mm



Empty control stations enclosures



→ for installation of push buttons, selectors switches, pilot lights

## Push buttons, selector switches, pilot lights and control stations

**Buttons, switches and signal lamps**

Compliance with standards	IEC 60947-5-1, ISO 13850 (EN 418), IEC 60947-5-5
Certify	CE
Base material	Polyamide (PA66) or polycarbonate (PC)
Degree of protection IP	IP66 and IP52 (PB2I-F/RG) according to IEC 60529

**Mechanical life**

Buttons	3 x 10 <sup>6</sup> triggers
Buttons double	2 x 10 <sup>6</sup> triggers
Buttons mushroom	3 x 10 <sup>5</sup> triggers
Buttons mushroom-emerg	1 x 10 <sup>5</sup> triggers
Switchesency	1 x 10 <sup>6</sup> triggers
Applications	Outside or inside

**Contact blocks**

Rated insulation voltage U <sub>i</sub>	690 V
Rated insulation voltage pulse U <sub>imp</sub>	4 kV
IP degree of protection (IEC 60529)	IP20
Conventional thermal current I <sub>th</sub>	10 A
Conformity to standards	IEC 60947-5-1, ISO 13850 (EN 418), IEC 60947-5-5
Certifications	CE

**Electrical characteristics according to IEC 60947-5-1**

	BC...CS-NO/NC		BC-NC-PBM	
	U <sub>e</sub> (V AC)	I <sub>e</sub> (A)	U <sub>e</sub> (V AC)	I <sub>e</sub> (A)
Application Category AC-15	24	10	24	6
	48	10	48	6
	60	10	60	6
	110	6	110	6
	220	3	220	3
	380	2	380	2
	500	1,5	500	1,5
	600	1,2	600	1,2
Category of DC-13 application	U <sub>e</sub> (V DC)	I <sub>e</sub> (A)	U <sub>e</sub> (V DC)	I <sub>e</sub> (A)
	24	2,5	24	2,5
	48	1,4	48	1,4
	60	1	60	1
	110	0,55	110	0,55
	220	0,27	220	0,27
	300	0,2	300	0,2
	600	0,1	600	0,1
UL and CSA compliant design	AC/Heavy duty mode (A600) and DC/Standard mode (Q600)		-	
Contact resistance (IEC 60255)	≤ 25m Ω			
Protection against electric shock (IEC 60536)	Class II			
Cross-section of connectable conductors	from 1x0,5 mm <sup>2</sup> to 2x2,5 mm <sup>2</sup>			
Terminal torque	0,8 Nm			
Operational temperature	-25°C to 70°C			
Vibration resistance (IEC 60068-2-6)	16 g for a frequency range of 40 to 500 Hz. Maximum gap of 0.75 mm (peak to peak)			
Mechanical life	1 x 10 <sup>6</sup> cycles			

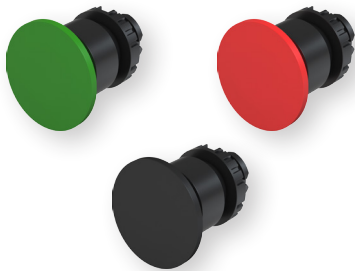
**LED module "LED"**

Conformity with standards	IEC 60947-5-1
Operating voltage range	0,85...1,10 x U <sub>e</sub>
Degree of protection IP (IEC 60529)	IP20
Consumption (V AC/V DC)	10 mA
Rated insulation voltage U <sub>i</sub> (IEC 60947-1)	2,5 kV
Operational temperature range	from -25°C to 70°C
Lifetime	at least 100,000 hours
The power of light	Red 70 mcd
	Yellow 115 mcd
	White 275 mcd
	Blue 64 mcd
	Green 150 mcd
Cross-section of conductors to be connected	from 1 x 0,5 mm <sup>2</sup> to 2 x 2,5 mm <sup>2</sup>
Terminal torque	0,8 Nm

**Features:**

- modular design,
- standard mounting diameter Ø22.5mm,
- snap fastening system,
- cascade installation possibility,
- IP66 degree of protection.

Push buttons, selector switches, pilot lights and control stations



Flush button (non-locking)

Type	Colour	Code number	Dimensions	Weight (kg)	Packaging (pcs)
NSE-PBF-W	○ White	004774000		0,021	1/10
NSE-PBF-R	● Red	004774001		0,021	1/10
NSE-PBF-G	● Green	004774002		0,021	1/10
NSE-PBF-Y	● Yellow	004774003		0,021	1/10
NSE-PBF-B	● Blue	004774004		0,021	1/10
NSE-PBF-C	● Black	004774005		0,021	1/10

\* Important: The holder and contact block are not included in the scope of delivery.

Button module protruding (non-locking)

Type	Colour	Code number	Dimensions	Weight (kg)	Packaging (pcs)
NSE-PBP-W	○ White	004774010		0,021	1/10
NSE-PBP-R	● Red	004774011		0,021	1/10
NSE-PBP-G	● Green	004774012		0,021	1/10
NSE-PBP-Y	● Yellow	004774013		0,021	1/10
NSE-PBP-B	● Blue	004774014		0,021	1/10
NSE-PBP-C	● Black	004774015		0,021	1/10

\* Important: The holder and contact block are not included in the scope of delivery.

Mushroom button module Ø 40 mm (non-locking)

Type	Colour	Code number	Dimensions	Weight (kg)	Packaging (pcs)
NSE-PBM-R	● Red	004774020		0,024	1/10
NSE-PBM-G	● Green	004774021		0,024	1/10
NSE-PBM-C	● Black	004774022		0,024	1/10

\* Important: The holder and contact block are not included in the scope of delivery.

Mushroom button module Ø 40 mm (with key)

Type	Colour/description	Code number	Dimensions	Weight (kg)	Packaging (pcs)
NSE-PBM-R-K	● Red (key switch off)	004774023		0,09	1/10

\* Important: The holder and contact block are not included in the scope of delivery.

Double push-button module (non-locking)

Type	Colour/description	Code number	Dimensions	Weight (kg)	Packaging (pcs)
NSE-PB2/RG-IO	● Green/Red (I/O)	004774030		0,025	1/25
NSE-PB2/RG-STSP	● Green/Red (START/STOP)	004774031		0,025	1/25
NSE-PB2/RG	● Green/Red	004774032		0,025	1/25
NSE-PB2/WC-IO	○ White/Black (I/O)	004774033		0,025	1/25
NSE-PB2/WC-STSP	○ White/Black (START/STOP)	004774034		0,025	1/25
NSE-PB2/WC	○ White/Black	004774035		0,025	1/25
NSE-PB2/CC-PN	● Black/Black (+/-)	004774036		0,025	1/25
NSE-PB2/CC-FR	● Black/Black (↑/↓)	004774037		0,025	1/25

\* Important: The holder and contact block are not included in the scope of delivery.

Stop buttons for emergency stop

Emergency stop button Ø 40 mm (lockable)						
Type	Colour/description	Code number	Dimensions	Weight (kg)	Packaging (pcs)	
NSE-PBM-T-R	Red (turn off by turning)	004774040		0,049	1/10	
NSE-PBM-T-RG	Red (turning off, with indication)	004774042				
NSE-PBM-P-R	Red (pull out disconnection)	004774041				
NSE-PBM-P-RG	Red (pull-out disconnection, with indication)	004774043				

\* **Important:** The holder and contact block are not included in the scope of delivery.

Two-position switch "0-1"						
Type	Colour/description	Scheme	Code number	Dimensions	Weight (kg)	Packaging (pcs)
NSE-S2-F45	Black 45° (lockable)		004774080		0,025	1/10
NSE-S2-F90	Black 90° (lockable)		004774081		0,025	
NSE-S2-R45	Black 45° (no locking)		004774082		0,025	
NSE-S2-R90	Black 90° (no locking)		004774083		0,025	

\* **Important:** The holder and contact block are not included in the scope of delivery.

DIP switch "0-1", (with key)						
Type	Colour/description	Scheme	Code number	Dimensions	Weight (kg)	Packaging (pcs)
NSE-S2K-F45	Black 45° (lockable)		004774088		0,087	1/10

\* **Important:** The holder and contact block are not included in the scope of delivery.

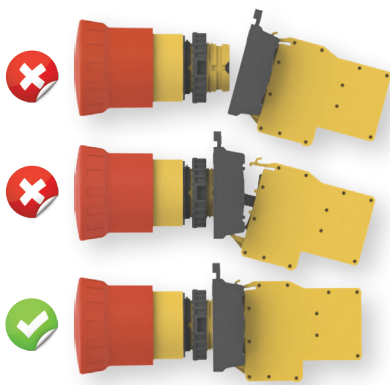
CSW-CK2 / CK3  
NSE-S2 / S3

Three position switch "1-0-2"						
Type	Colour/description	Scheme	Code number	Dimensions	Weight (kg)	Packaging (pcs)
NSE-S3-F45	Black 45° (lockable)		004774084		0,025	1/10
NSE-S3-R45	Black 45° (no locking)		004774085		0,025	
NSE-S3-RL45	Black, 45° (no locking on left side)		004774086		0,025	
NSE-S3-RR45	Black, 45° (no-locking right)		004774087		0,025	

\* **Important:** The holder and contact block are not included in the scope of delivery.



Stop buttons for emergency stop with monitoring function



**Application** - metering and signalling panels, control panels.

Emergency mushroom buttons are one of the most common and important devices for emergency shutdown and indication in case of emergency situations arising in electrical equipment circuits and control panels.

**Warning:** if the components are not installed correctly, the function of the appliance may be impaired. This can result in an emergency shutdown blockage, exposing users to additional risks.

- The NSE-BC-NC-PB self-monitoring contact block is designed to provide a higher level of installation safety and control. Its use with the NSE-PBM-T-RGM/NSE-PBM-P-RGM range of Emergency Stop pushbuttons provides electrical interlocking in the event of incomplete or incorrectly assembled Emergency Stop button components.

- Developed in accordance with international standards IEC 60947-5-5 and UL 508

**Emergency stop button Ø 42 mm, with self-monitoring function (lockable)**

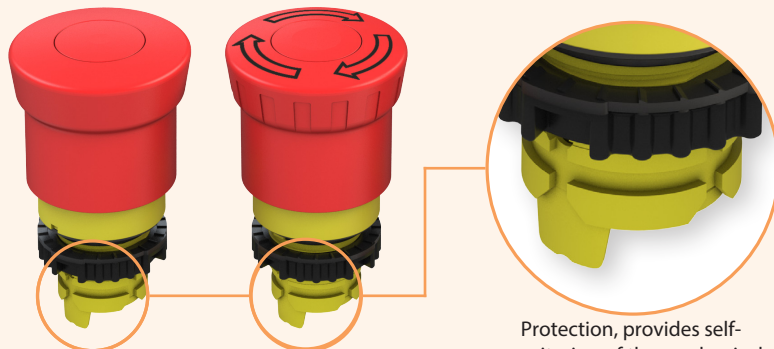
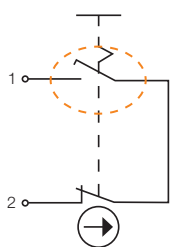
Type	Colour/ scription	Code number	Dimensions	Weight (kg)	Packaging (pcs)
NSE-PBM-T-RGM	Red ● (turning off, with indication)	004774044		0,058	1/10
NSE-PBM-P-RGM	Red ● (pull-out disconnection, with indication)	004774045		0,058	1/10

**\* Important:** The holder and contact block are not included in the scope of delivery.

**Contact block with monitoring function**

Type	Description	Code number	Dimensions	Weight (kg)	Packaging (pcs)
NSE-BC-NC-PBM	1NC contact block	004774114		0,023	1/10

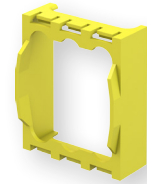
**Circuit diagram**



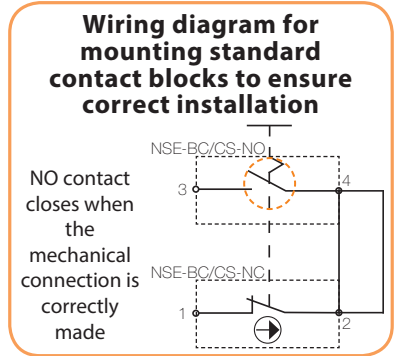
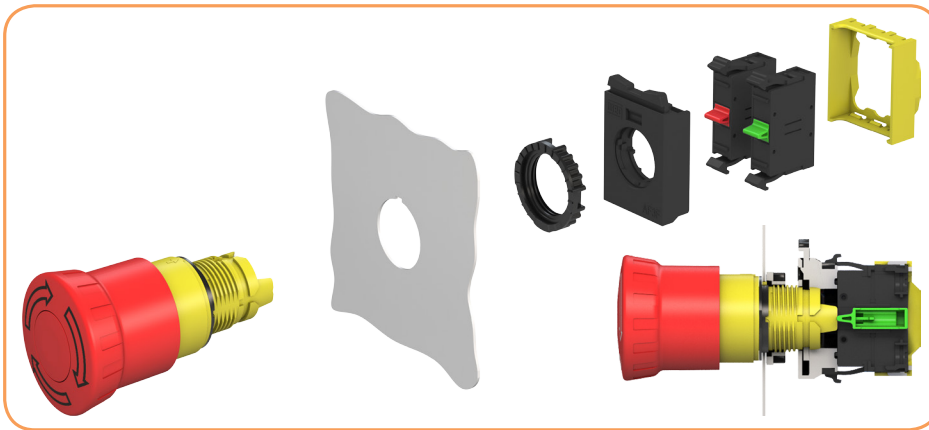
Protection, provides self-monitoring of the mechanical assembly.

When using standard contact blocks, the NSE-PBMH retainer must be used. The contact block retainer allows all elements to be assembled into a single unit, provides greater safety and reduces the possibility of operating errors.

Pin block retainer					
Type	Description	Code number	Compatibility	Weight (kg)	Packaging (pcs)
NSE-PBMH	Contact block retainer for checking the mechanical assembly.	004774046	Max number of conduit blocks: 3 NSE-BC/CS-NO/NC blocks. <b>Note:</b> Does not allow overlapping of contacts.	0,002	1/1



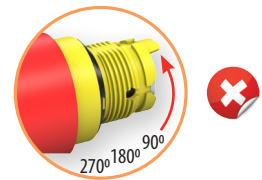
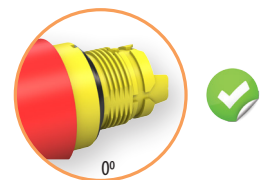
Installation of standard contact blocks when panel mounting



Installation of standard contact blocks for enclosure mounting



When installing the Emergency Stop pushbuttons  
When installing the emergency stop pushbuttons, this installation makes it possible to check the correct assembly



Backlit buttons and switches



Flush-module button with backlight (non-latching)

Type	Colour	Code number	Dimensions	Weight (kg)	Packaging (pcs)
NSE-PBFI-W	White	004774050		0,021	1/10
NSE-PBFI-R	Red	004774051		0,022	1/10
NSE-PBFI-G	Green	004774052		0,022	1/10
NSE-PBFI-Y	Yellow	004774053		0,022	1/10
NSE-PBFI-B	Blue	004774054		0,022	1/10

**Important:** The holder and contact block are not included in the scope of delivery.

Illuminated protruding module button (non-locking)

Type	Colour	Code number	Dimensions	Weight (kg)	Packaging (pcs)
NSE-PBPI-R	Red	004774060		0,021	1/10
NSE-PBPI-G	Green	004774061		0,021	1/10

**Important:** The holder and contact block are not included in the scope of delivery.

Mushroom button module Ø 40 mm, illuminated (non-locking)

Type	Colour	Code number	Dimensions	Weight (kg)	Packaging (pcs)
NSE-PBMI-R	Red	004774062		0,026	1/10

**Important:** The holder and contact block are not included in the scope of delivery.

Illuminated twin push-button module (non-locking)

Type	Colour/description	Code number	Dimensions	Weight (kg)	Packaging (pcs)
NSE-PB2I/RG-I/O	Green/Red (I/O)	004774070		0,025	1/25
NSE-PB2I/RG-STSP	Green/Red (START/STOP)	004774071		0,025	1/25
NSE-PB2I/RG	Green/Red	004774072		0,025	1/25
NSE-PB2I/WC-I/O	White/Black (I/O)	004774073		0,025	1/25
NSE-PB2I/WC-STSP	White/Black (START/STOP)	004774074		0,025	1/25
NSE-PB2I/WC	White/Black	004774075		0,025	1/25
NSE-PB2I/CC-PN	Black/Black (+/-)	004774076		0,025	1/25
NSE-PB2I/CC-FR	Black/Black(1/1)	004774077		0,025	1/25

**Important:** The holder and contact block are not included in the scope of delivery.

Illuminated twin push-button module (non-latching) IP52

Type	Colour/description	Code number	Dimensions	Weight (kg)	Packaging (pcs)
NSE-PB2I-F/RG-I/O	Green/Red (I/O)	004774078		0,025	1/10

**Important:** The holder and contact block are not included in the scope of delivery.

Illuminated two-position "0-1" module switch

Type	Colour/description	Scheme	Code number	Dimensions	Weight (kg)	Packaging (pcs)
NSE-S2I-F90-R	Red 90° (lockable)		004774090		0,02	1/10
NSE-S2I-F90-G	Green 90° (lockable)		004774091		0,02	

**Important:** The holder and contact block are not included in the scope of delivery.

Illuminated three-position switch module "1-0-2"

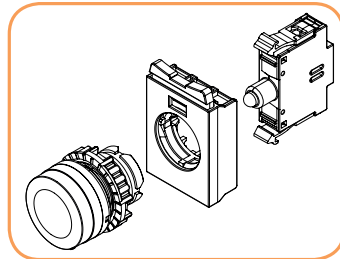
Type	Colour/description	Scheme	Code number	Dimensions	Weight (kg)	Packaging (pcs)
NSE-S3I-F45-R	Red 45° (with lock)		004774092		0,02	1/10
NSE-S3I-F45-G	Green 45° (with lock)		004774093		0,02	
NSE-S3I-F45-Y	Yellow 45° (with lock)		004774094		0,02	

**Important:** The holder and contact block are not included in the scope of delivery.

Signal module lamps

Signal module lamp						
Type	Colour	Code number	Dimensions	Weight (kg)	Packaging (kg)	
NSE-ILM-HD-W	○ White	004774130		0,016	1/10	
NSE-ILM-HD-R	● Red	004774131		0,016	1/10	
NSE-ILM-HD-G	● Green	004774132		0,016	1/10	
NSE-ILM-HD-Y	● Yellow	004774133		0,016	1/10	
NSE-ILM-HD-B	● Blue	004774134		0,016	1/10	
NSE-ILM-HD-O	● Orange	004774135		0,016	1/10	

\* Important: The holder and LED module are not included.

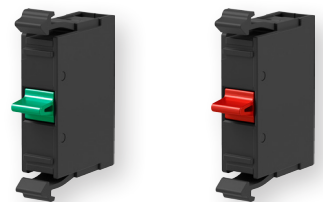


Accessories

Holder for contact blocks and LED modules					
Type	Description	Code number	Dimensions	Weight (kg)	Packaging (pcs)
NSE-FL3/10	3 module holder (10 pcs.)	004774100		0,013	10
NSE-FL3	3 module holder (1 pc.)	004774101		0,013	1/25
NSE-FL5/5	5 modular holder (5 pcs.)	004774102		0,02	5
NSE-FL5	5 module holder (1 pc.)	004774103		0,02	1



Additional contacts with screw terminals					
Type	Description	Code number	Dimensions	Weight (kg)	Packaging (pcs)
NSE-BC-NO/10	1NO contact block (10 pcs)	004774110		0,015	10
NSE-BC-NO	1NO contact block (1 pc)	004774111		0,015	1/25
NSE-BC-NC/10	1NC contact block (10 pcs)	004774112		0,015	10
NSE-BC-NC	1NC contact block (1pc)	004774113		0,015	1/25



LED module "LED"						
Type	Colour	Voltage	Code number	Dimensions	Weight (kg)	Packaging (pcs)
NSE-ILM-024U-W	○ White	24V AC/DC	004774120		0,016	1/10
NSE-ILM-024U-R	● Red	24V AC/DC	004774121			
NSE-ILM-024U-G	● Green	24V AC/DC	004774122			
NSE-ILM-024U-Y	● Yellow	24V AC/DC	004774123			
NSE-ILM-024U-B	● Blue	24V AC/DC	004774124			
NSE-ILM-240V-W	○ White	240 V AC	004774125			
NSE-ILM-240V-R	● Red	240 V AC	004774126			
NSE-ILM-240V-G	● Green	240 V AC	004774127			
NSE-ILM-240V-Y	● Yellow	240 V AC	004774128			
NSE-ILM-240V-B	● Blue	240 V AC	004774129			





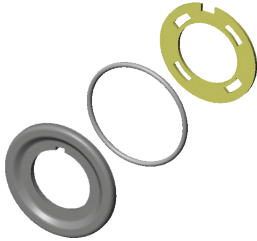
Position locking module for contact blocks					
Type	Description	Code number	Dimensions	Weight (kg)	Packaging (pcs.)
NSE-BC-LF	Changes the position of the contact block by pressing once	004774115		0,019	1

**\* Important:**

Mechanical push-on/push-off block for contact blocks mounted on buttons: CSW-BF, CSW-BFI, CSW-BS, CSW-BSI, CSW-BGA, CSW-BC, CSW-BCI

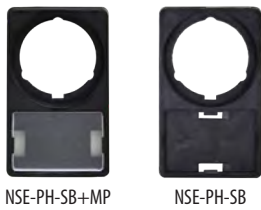
Note: use only with the following contact blocks:

- BC01F (1NC) and - BCA10F (1NOa - advanced)



Adaptor ring					
Type	Description	Code number	Dimensions	Weight (kg)	Packaging (kg)
NSE-RR-30/22	From Ø30mm to Ø22.5mm	004774140		0,006	1

**Label plate underneath**



NSE-PH-SB+MP

NSE-PH-SB

Type	Description/Compatibility	Code number	Dimensions	Weight (kg)	Packaging (kg)
NSE-PH-SB+MP	Plaque + marking plate 27 x 18 mm white Buttons, switches and indicator lights	004774141		0,004	5
NSE-PH-SB	Plaque Buttons, switches and indicator lights	004774143			



NSE-PH-DB+MP

NSE-PH-DB

NSE-PH-DB+MP	Label + marking plate 27 x 18 mm white IP52 dual buttons NSE-PB2I-F/RG-IO (4774078)	004774142		0,004	5
NSE-PH-DB	Label IP52 dual buttons NSE-PB2I-F/RG-IO (4774078)	004774144			

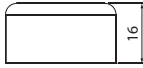
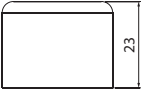
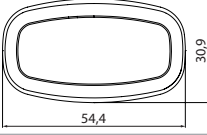
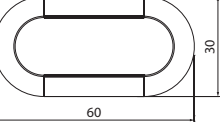
**Ring with inscription (for panel only)**



Type	Description/Compatibility	Code number	Dimensions	Weight (kg)	Packaging (kg)
NSE-PL-EMG	● Emergency Stop	004774145		0,009	5




Accessories

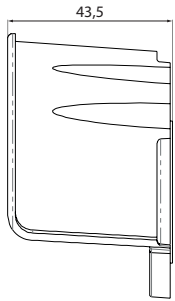
Protective silicone cap					
Type	Compatibility	Code number	Dimensions	Weight (kg)	Packaging (pcs)
NSE-SPC-PBF	Buttons recessed, signal lamps	004774170		0,005	5
NSE-SPC-PBP	Buttons recessed and backlit, Buttons protruding, Buttons with backlighting	004774171		0,005	5
NSE-SPC-PB2*	Buttons double, illuminated double pushbuttons	004774172		0,005	5
NSE-SPC-PB2-F*	IP52 backlit twin pushbuttons, to provide IP66	004774173		0,006	5

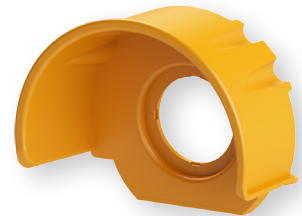
\* **Important:** Not compatible with push-button posts



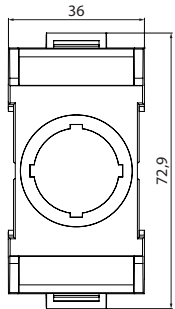
Plug					
Type	Description	Code number	Dimensions	Weight (kg)	Packaging (pcs)
NSE-HP	Plug Ø 22.5 mm	004774174		0,008	5

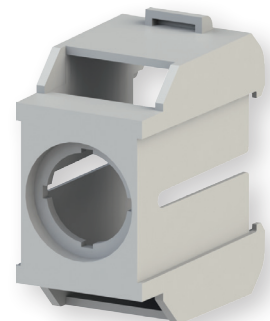


ES protection					
Type	Description	Code number	Dimensions	Weight (kg)	Packaging (pcs)
NSE-PC-PBM	Protection against accidental pressing of the emergency button	004774175		0,027	1



\* **Important:** Only applicable for NSE-CS1-Y. You could install this accessory with other control stations models but you will need to disenable one hole closer this accessory

Adapter for mounting buttons and lamps on din rail					
Type	Description	Code number	Dimensions	Weight (kg)	Packaging (pcs)
NSE-ADR-1M	Allows the button/signal lamp/switch to be mounted on a 35mm DIN rail. Note: Does not allow the following accessories to be used: - Self-monitoring contact block (BCM01F-CSW); - 5-module contact block holder.	004774176		0,033	1



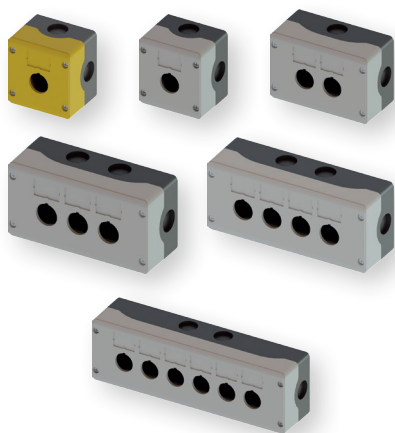
\* **Important:** Not compatible with the Heavy Duty contact block.

\* **Important!** Not compatible with the 5 module contact block holder.

Assembly tool					
Type	Description	Code number	Weight (kg)	Packaging (pcs)	
NSE-FRT	Assembly tool	004774177	0,025	1	



Enclosures for push-button stations



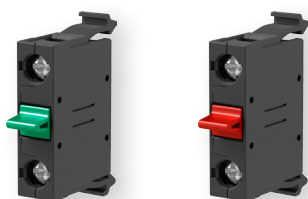
Control stations

Conformity to standards	IEC 60947-5-1, IEC 50102, IEC 60529, UL 508, UL 50
Certificates	CE
Degree of protection IP (IEC 60529)	IP66 (NEMA 4X)
Operating temperature	-25°C to 70°C
Material	Polycarbonate (cover and base)
Colour	Grey (RAL 7035) or yellow (RAL 1003)
Base colour	Black (RAL 9005)
Cable entry	ØM20 / PG13,5 / 1/2" e ØM16 / 3/8"
Application	External/internal

Empty control station

Type	Description	Colour of enclosure	Code number	Weight (kg)	Packaging (pcs)
NSE-CS1-Y	Housing with 1 hole, emergency	Yellow-black	004774150	0,13	1
NSE-CS1-GR	1-hole housing	Grey-black	004774151	0,13	1
NSE-CS2-GR	2-holes housing	Grey-black	004774152	0,17	1
NSE-CS3-GR	3-holes housing	Grey-black	004774153	0,2	1
NSE-CS4-GR	4-holes housing	Grey-black	004774154	0,25	1
NSE-CS6-GR	6-holes housing	Grey-black	004774155	0,32	1

Accessories for enclosures



Contact block for enclosure mounting

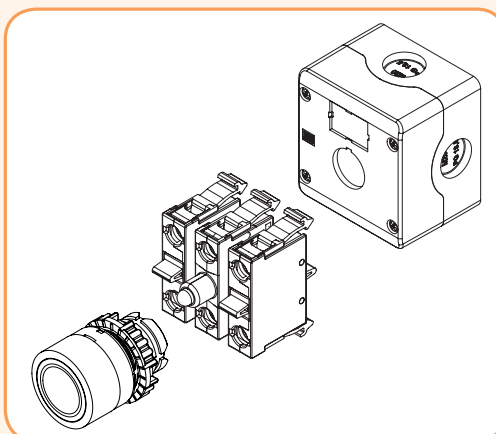
Type	Description	Code number	Dimensions	Weight (kg)	Packaging (pcs)
NSE-BC/CS-NO	1NO contact block	004774156		0,15	1
NSE-BC/CS-NC	1NC contact block	004774157		0,15	1

\* **Important:** The contact blocks do not require a contact block holder to be mounted in the enclosure. The contact blocks are fixed into the base of the enclosure.

LED module for enclosure mounting

Type	Colour	Voltage	Code number	Dimensions	Weight (kg)	Packaging (pcs)
NSE-ILM-CS-024U-W	White	24V AC/DC	004774158		0,016	1/10
NSE-ILM-CS-024U-R	Red	24V AC/DC	004774159			
NSE-ILM-CS-024U-G	Green	24V AC/DC	004774160			
NSE-ILM-CS-024U-Y	Yellow	24V AC/DC	004774161			
NSE-ILM-CS-024U-B	Blue	24V AC/DC	004774162			
NSE-ILM-CS-240V-W	White	240V AC	004774163			
NSE-ILM-CS-240V-R	Red	240V AC	004774164			
NSE-ILM-CS-240V-G	Green	240V AC	004774165			
NSE-ILM-CS-240V-Y	Yellow	240V AC	004774166			
NSE-ILM-CS-240V-B	Blue	240V AC	004774167			

\* **Important:** The LED module holder is not required for fitting the LED modules into the enclosure. The LED modules are fixed into the base of the enclosure.



## Assembly configurations

Assembly configurations				
Type	Backlit switches and switches	Switches and switches without illumination	Backlit buttons	
	NSE-S2I / S3I	NSE-S2 / S3 / S2K	NSE-PB2I	NSE-PBM, NSE-PB2I-F, NSE-PBF, NSE-PBI
Max. number of contacts	Max. 4	Max. 6	Max. 4	Max. 6
3-module holder NSE-FL3				
Max. number of contacts	Max. 4	Max. 6	Max. 4	Max. 6
5 module holder <sup>1</sup> NSE-FL5				
Type	Buttons without backlight			
Max. number of contacts	NSE-PBM-T/P Max. 4	NSE-PB2 Max. 4	NSE-PBF Max. 6	NSE-PBM, NSE-PBP Max. 6
3 module holder NSE-FL3				
Max. number of contacts	-	Max. 4	Max. 6	Max. 6
5 module holder <sup>2</sup> NSE-FL5	-			

1 Only use illumination blocks in the middle position of the NSE-FL5 holder

2 Do not use self-controlling contact blocks with the NSE-FL5 holder;

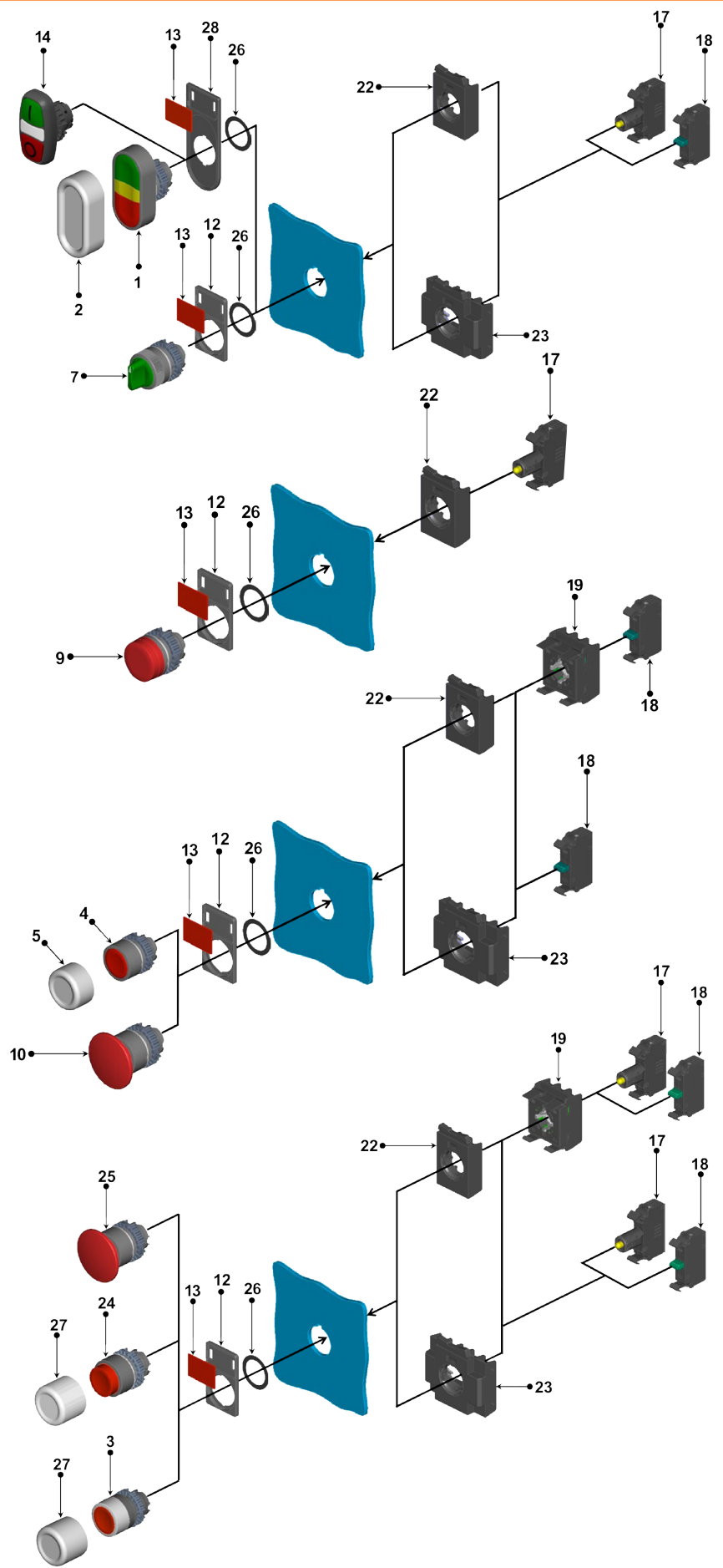
2 Do not use emergency buttons with the NSE-FL5 flange

	NSE-BC contact blocks		Mushroom button contact block with self-monitoring function NSE-BC-NC-PBM
	LED module "LED" NSE-ILM		Pin block retainer
			Installation is not allowed

Mounting

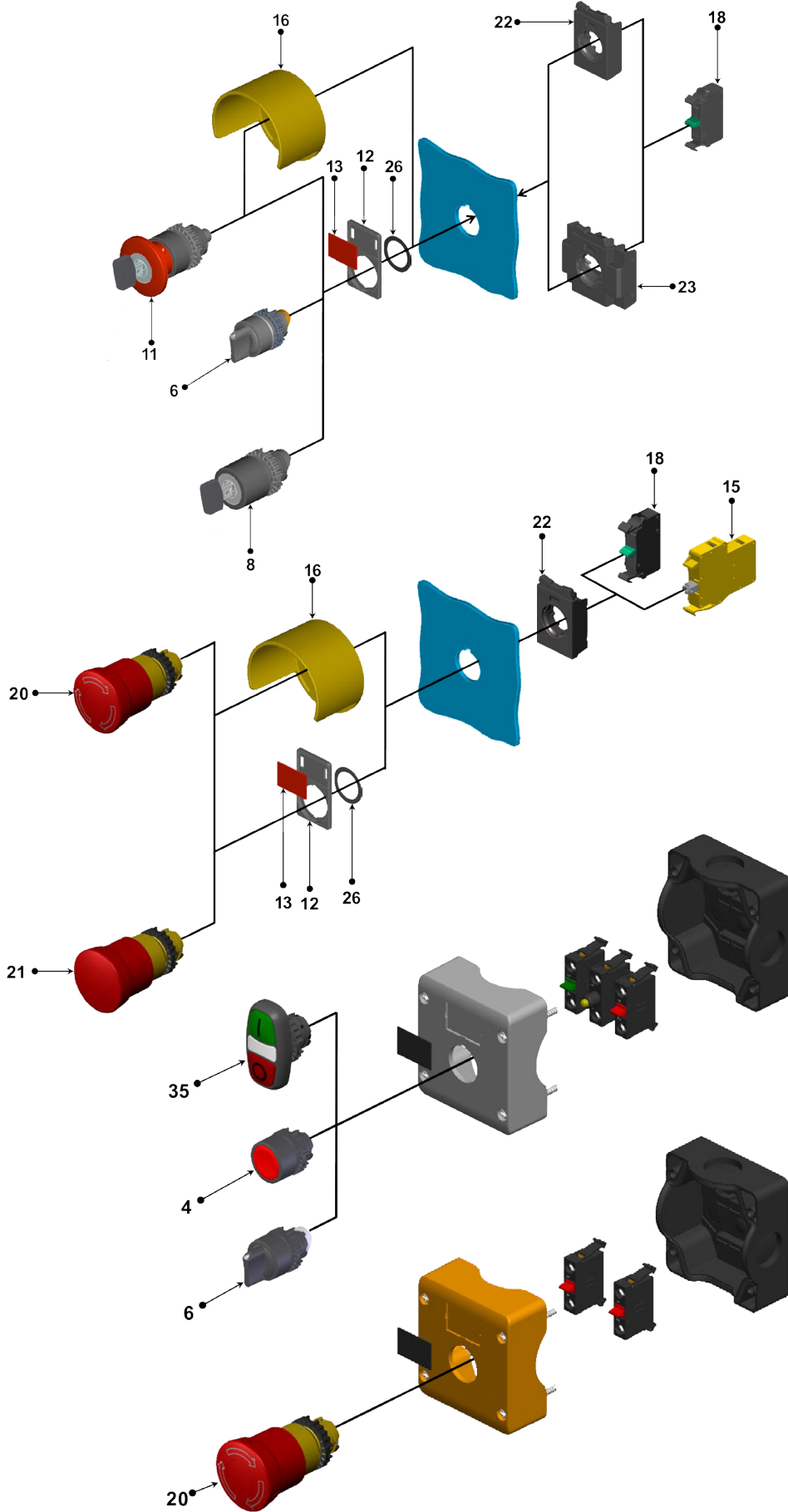
**Legend**

Nº	Descriptiona
1	Dual IP52 push button module
2	Protective silicone cap for dual button
3	Button module with backlight
4	Flush plate button
5	Protective silicone cap for flush-mounted button
6	Switch / switch - module
7	Lighted switch/switch module
8	Switch/Key-operated switch-module
9	Signal lamp module
10	Mushroom button module
11	Mushroom button with key
12	Button key module badge
13	Marking plate 27x18mm
14	IP66 twin push button module
15	Mushroom button-module contact block with self-monitoring function
16	Protection against accidental pressing of the emergency button
17	LED module "LED"
18	Contact block
19	Position locking module for contact blocks
20	Mushroom emergency button, twist-off
21	Mushroom emergency button, retractable
22	3 module holder for contact blocks and LED modules
23	5 Modular contact blocks and LED module holder
24	Button module protruding with backlight
25	Mushroom button module with backlight
26	Sealing ring
27	Protective silicone cap for illuminated recessed button module, protruding button module, illuminated push-button module protruding
28	Plaque for twin button module



ETISIG

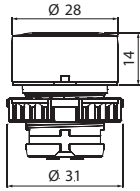
Mounting



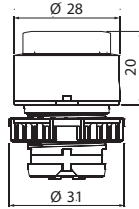


Dimensions, mounting

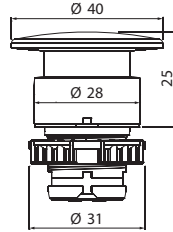
Button module recessed



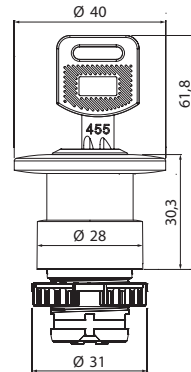
Button module protruding



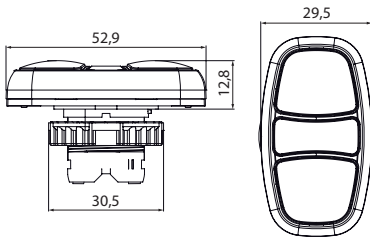
Mushroom button module Ø40 mm (backlit)



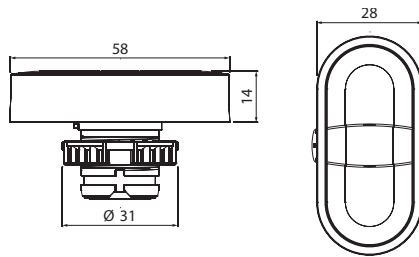
Mushroom button module Ø40 mm (with key)



Double button module (backlit)



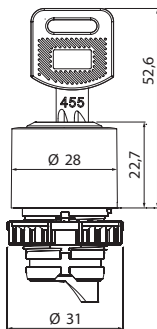
Dual IP52 illuminated push-button module



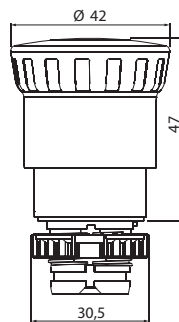
Switch module Two-position "0-1", Three-position "1-0-2"



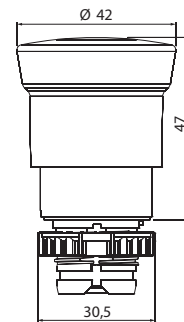
Two-position switch module "0-1", (with key)



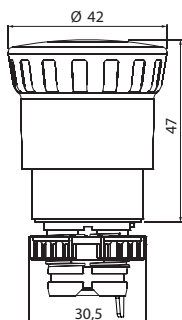
Emergency mushroom push-button Ø42 mm (turn-off)



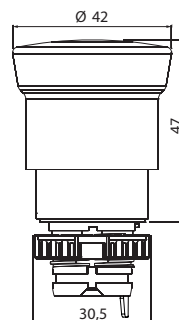
Mushroom emergency button Ø42m (pull-out disconnection)



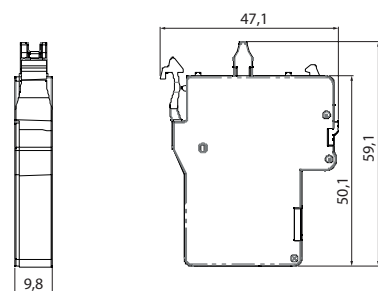
Mushroom emergency button Ø42mm, self-monitoring function (switch-off by turning)



Mushroom emergency button Ø42 mm, self-monitoring function (switch-off by pulling out)

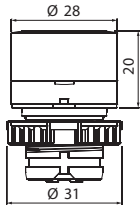


Contact block for mushroom button with self-monitoring function

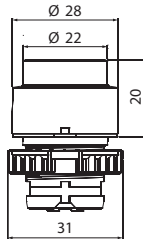


Dimensions, mounting

Flush-module button with backlight



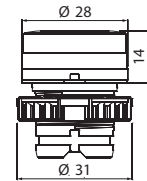
Button module protruding with backlight



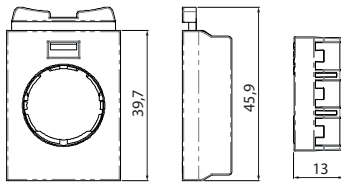
Illuminated module switch, two-position "0-1", three-position "1-0-2"



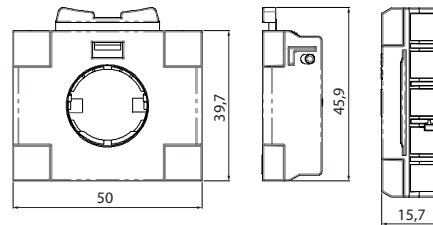
Signal lamp module



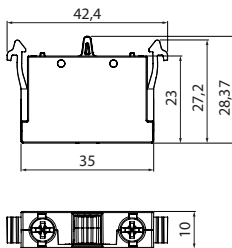
3 Modular LED module and contact block holder



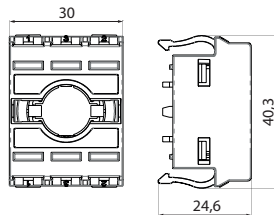
5 Modular LED module and contact block holder



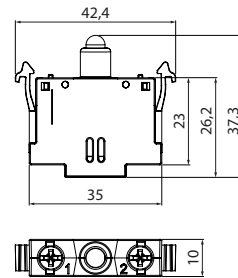
Locking block  
Блок контактов



Locking block



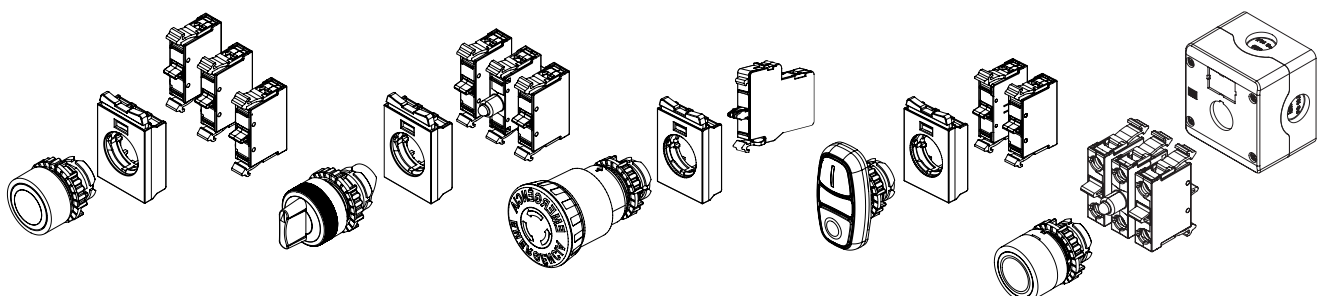
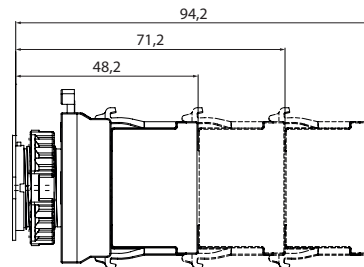
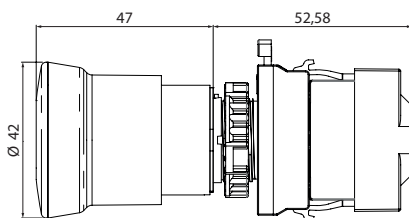
LED module "LED"



Mushroom emergency button kit:

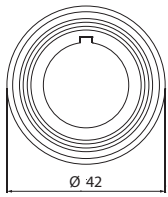
- Mushroom emergency button
- 3 modular contact block holder
- Contact blocks
- Contact block retainer

Installation of contact blocks  
1, 2, 3 level

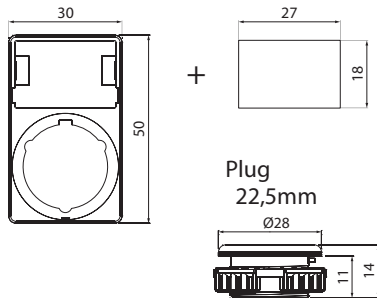


Dimensions, mounting

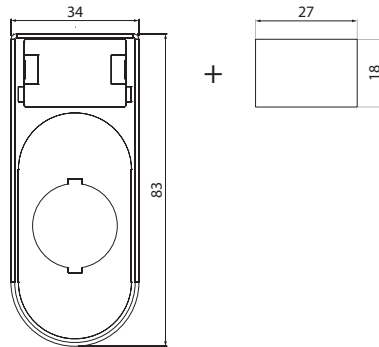
Adapter ring



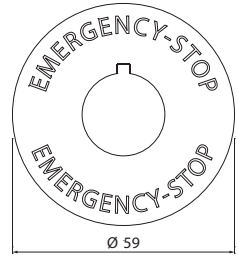
Marking plate holder + marking plate



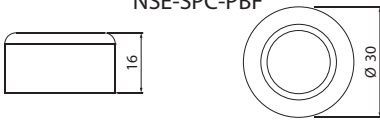
Marking plate holder for double button IP52 + marking plate



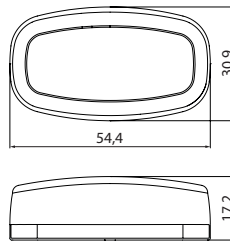
Ring with inscription



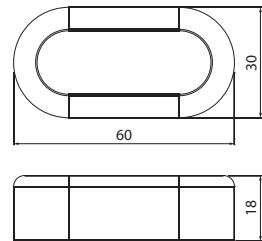
Protective silicone cap NSE-SPC-PBF



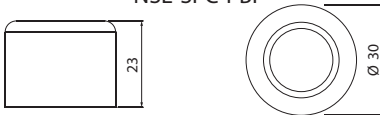
Protective silicone cap NSE-SPC-PB2



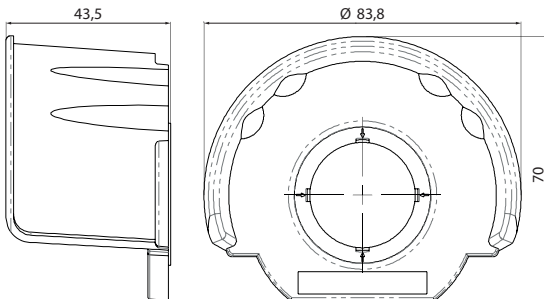
Protective silicone cap NSE-SPC-PB2-F



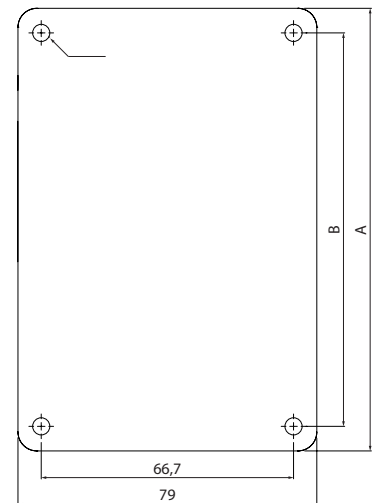
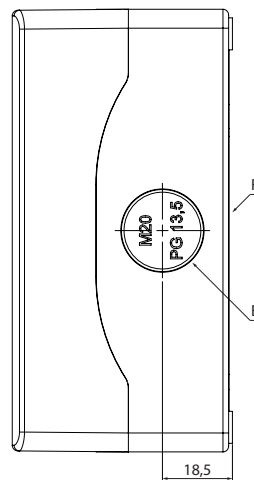
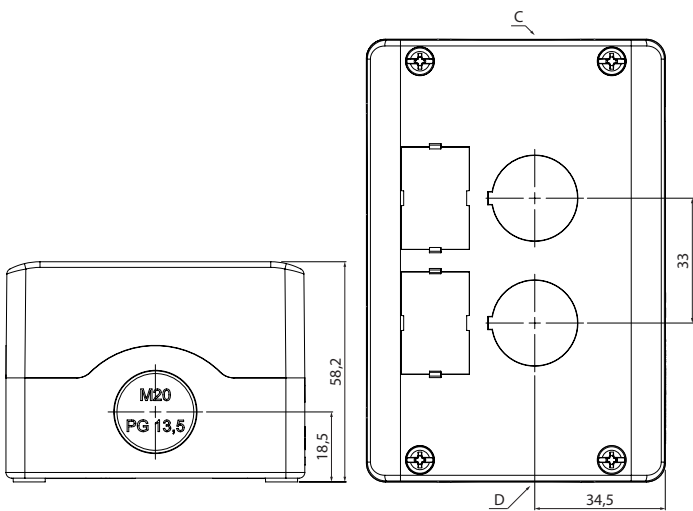
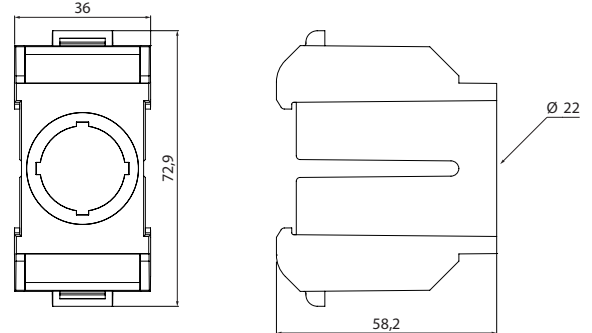
Protective silicone cap NSE-SPC-PBP



Protection against accidental pressing of the emergency button



Adapter for mounting buttons and lamps on din rail



Cases

No. of holes	A	B	Cable entry			
			C (bottom)	D (above)	E (sideways)	F (with base)
1	74	66,7	1x ØM20/PG13,5	1x ØM20/PG13,5	1x ØM20/PG13,5	2x ØM16
2	117	104	1x ØM20/PG13,5	1x ØM20/PG13,5	1x ØM20/PG13,5	2x ØM16
3	150	137	1x ØM20/PG13,5	1x ØM20/PG13,5	2x ØM20/PG13,5	2x ØM16
4	183	170	1x ØM20/PG13,5	1x ØM20/PG13,5	2x ØM20/PG13,5	2x ØM16
6	249	236	1x ØM20/PG13,5	1x ØM20/PG13,5	2x ØM20/PG13,5	2x ØM16