

NEO KOMÜTATÖR

NEO DOUBLE ONE WAY SWITCH



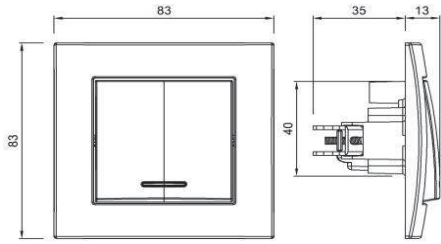
TR

- * 10 AX, 250 V~
- * Bir kutuplu, iki yönlü.
- * Vida bağlantılı montaj.
- * Sıva altı montaja uygun.

EN

- * Rated voltage: 250 V~
- * Rated current: 10 AX
- * 1 gang 2 way
- * Installation with screw connection
- * For flush-mounted installation.

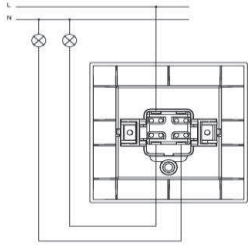
ÖLÇÜLER/ DIMENSIONS



RENK SEÇENEKLERİ / COLOR OPTIONS

513-000200-202 BEYAZ WHITE

BAĞLANTI ŞEMASI/ WIRING DIAGRAM



DEVRE ŞEMASI/ CIRCUIT DIAGRAM

