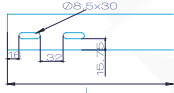
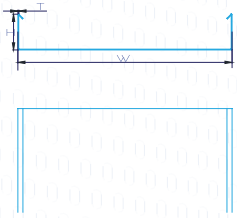
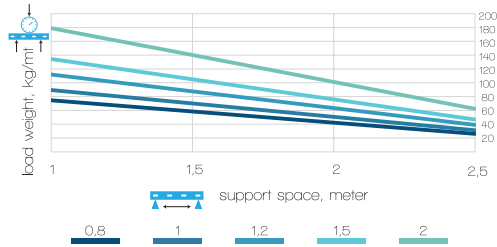


Standart Deliksiz Kablo Kanalı



Model	Width (W) (mm)	pregalvanised steel			hot dip galvanised finish		
		Thickness (T) (mm)	Weight (kg/m)	Order Code (PG)	Thickness (T) (mm)	Weight (kg/m)	Order Code (HDG)
ADK 505	50	0,80	1,07	1300 50 050 08 1	1,00	1,33	1300 50 050 10 2
ADK 510	100	0,80	1,38	1300 50 100 08 1	1,00	1,73	1300 50 100 10 2
ADK 515	150	1,00	2,12	1300 50 150 10 1	1,20	2,54	1300 50 150 12 2
ADK 520	200	1,00	2,51	1300 50 200 10 1	1,20	3,01	1300 50 200 12 2
ADK 525	250	1,00	2,90	1300 50 250 10 1	1,20	3,49	1300 50 250 12 2
ADK 530	300	1,20	3,96	1300 50 300 12 1	1,50	4,95	1300 50 300 15 2
ADK 540	400	1,20	4,90	1300 50 400 12 1	1,50	6,12	1300 50 400 15 2
ADK 550	500	1,50	7,30	1300 50 500 15 1	2,00	9,73	1300 50 500 20 2
ADK 560	600	1,50	8,48	1300 50 600 15 1	2,00	11,30	1300 50 600 20 2
ADK 575	750	2,00	13,66	1300 50 750 20 1	2,00	13,66	1300 50 750 20 2
ADK 590	900	2,00	16,01	1300 50 900 20 1	2,00	16,01	1300 50 900 20 2

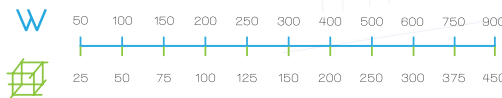
H: 50 - Non Perforated Cable Tray Load Graph



Permissible loads for a maximum deflection of 1/100th of the span, with coupling positioned at 1/5th of the span from support. The coefficient applied to the load for coupling in the middle of the span = 0.7

Safety co-efficient: 1.7

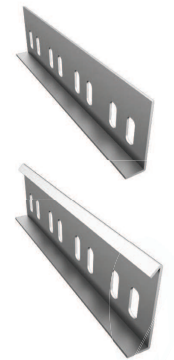
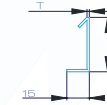
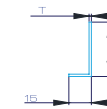
Recommended support distance : 1.5mt



Material & Finish Options:

- PG : pregalvanised steel EN 10142
- HDG : hot dip galvanised EN ISO 1461
- SS : stainless steel AISI 304
- AL : aluminum
- EP : epoxy painted - RAL

Birleştirme ve Bağlantı Elemanları



Material & Finish Options:

PG HDG SS

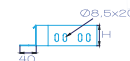
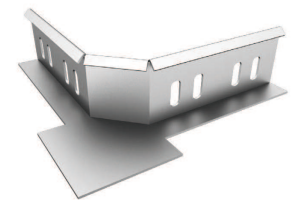
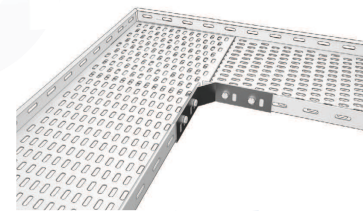
Model Number	Width (W) (mm)	Plate Thick. (T) (mm)	Weight (kg/pcs)	Order Code (PG)	Order Code (HDG)
KBE 250	130	1,20	0,08	8002 50 130 12 1	8002 50 130 12 2
BE 250	210	1,50	0,16	8002 50 210 15 1	8002 50 210 15 2
KBE 350	130	1,20	0,09	8003 50 130 12 1	8003 50 130 12 2
BE 350	210	1,50	0,19	8003 50 210 15 1	8003 50 210 15 2



Model Number	Width (W) (mm)	In Pack set	Weight (kg/pcs)	Order Code (EG)	Order Code (DACROMET)
CS M8	M8x15	200	0,012	9000 08 015 00 7	9000 08 015 00 2

Add on 90° Horizontal Corner Bend

90° Köşe yatay kanal dönüş eki



Model Number	Width (W) (mm)	Plate Thick. (T) (mm)	Weight (kg/pcs)	Order Code (PG)	Order Code (HDG)
KA90E 5	50	1,50	0,348	1215 50 000 15 1	1215 50 000 15 2
KA90ER1 5	150	1,50	0,486	1211 50 000 15 1	1211 50 000 15 2
KA90ER2 5	300	1,50	0,932	1212 50 000 15 1	1212 50 000 15 2
KA90ER3 5	450	1,50	1,561	1213 50 000 15 1	1213 50 000 15 2
KA90ER4 5	600	1,50	2,371	1214 50 000 15 1	1214 50 000 15 2

Used with 4 sets of CS M8 -Bolt & Nuts each

Material & Finish Options:

PG HDG SS AL EP

Cable Trays

50

Side Height

45° Horizontal Bend

45° yatay kanal dönüş elemanı

metaksan

metaksan

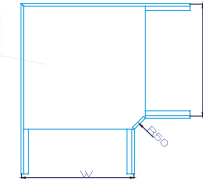
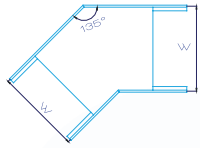
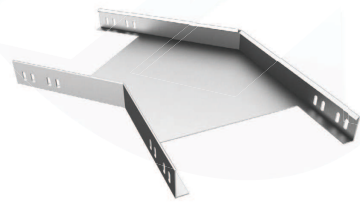
Cable Trays

50

Side Height

90° Horizontal Bend

90° yatay kanal dönüş elemanı



Model Number	Width (W) (mm)	Plate Thick. (T) (mm)	Weight (kg/pcs)	Order Code (PG)	Order Code (HDG)
KA45 505	50	1,20	0,884	1210 50 050 12 1	1210 50 050 12 2
KA45 510	100	1,20	1,067	1210 50 100 12 1	1210 50 100 12 2
KA45 515	150	1,20	1,283	1210 50 150 12 1	1210 50 150 12 2
KA45 520	200	1,50	1,916	1210 50 200 15 1	1210 50 200 15 2
KA45 525	250	1,50	2,269	1210 50 250 15 1	1210 50 250 15 2
KA45 530	300	1,50	2,665	1210 50 300 15 1	1210 50 300 15 2
KA45 540	400	2,00	4,773	1210 50 400 20 1	1210 50 400 20 2
KA45 550	500	2,00	6,215	1210 50 500 20 1	1210 50 500 20 2
KA45 560	600	2,00	7,880	1210 50 600 20 1	1210 50 600 20 2

Model Number	Width (W) (mm)	Plate Thick. (T) (mm)	Weight (kg/pcs)	Order Code (PG)	Order Code (HDG)
KA90 505	50	1,20	0,623	1220 50 050 12 1	1220 50 050 12 2
KA90 510	100	1,20	0,811	1220 50 100 12 1	1220 50 100 12 2
KA90 515	150	1,20	1,046	1220 50 150 12 1	1220 50 150 12 2
KA90 520	200	1,50	1,660	1220 50 200 15 1	1220 50 200 15 2
KA90 525	250	1,50	2,072	1220 50 250 15 1	1220 50 250 15 2
KA90 530	300	1,50	2,542	1220 50 300 15 1	1220 50 300 15 2
KA90 540	400	2,00	4,880	1220 50 400 20 1	1220 50 400 20 2
KA90 550	500	2,00	6,683	1220 50 500 20 1	1220 50 500 20 2
KA90 560	600	2,00	8,801	1220 50 600 20 1	1220 50 600 20 2

Used with 8 sets of CS M8 -Bolt & Nuts each

Material & Finish Options:
PG HDG SS AL EP

Used with 8 sets of CS M8 -Bolt & Nuts each

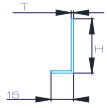
Standard production: radius 50

Unequal bends: A and B dimensions may be different

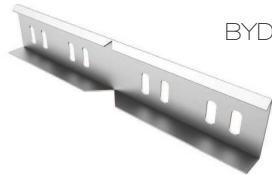
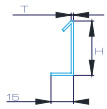
Material & Finish Options:
PG HDG SS

Adjustable Horizontal Connector

Yatay seviye değiştirme eki



BYD 1



BYD 2

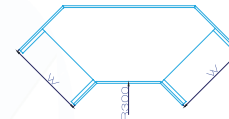
Model Number	Width (W) (mm)	Plate Thick. (T) (mm)	Weight (kg/pcs)	Order Code (PG)	Order Code (HDG)
BYD 150 10	250	1,00	0,128	8311 50 250 10 1	
BYD 150 12	250	1,20	0,153	8311 50 250 12 1	8311 50 250 12 2
BYD 150 15	250	1,50	0,191	8311 50 250 15 1	8311 50 250 15 2
BYD 250 10	250	1,00	0,147	8312 50 250 10 1	
BYD 250 12	250	1,20	0,177	8312 50 250 12 1	8312 50 250 12 2
BYD 250 15	250	1,50	0,221	8312 50 250 15 1	8312 50 250 15 2

For short L:125mm connectors :2 sets;
for L:250mm connectors : 4 sets

Material & Finish Options:
PG HDG SS

90° Horizontal Bend, radius 300

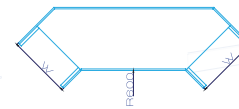
90° yatay kanal dönüş elemanı, radius 300



Model Number	Width (W) (mm)	Plate Thick. (T) (mm)	Weight (kg/pcs)	Order Code (PG)	Order Code (HDG)
KA90R2 505	50	1,20	1,316	1222 50 050 12 1	1222 50 050 12 2
KA90R2 510	100	1,20	1,623	1222 50 100 12 1	1222 50 100 12 2
KA90R2 515	150	1,20	1,977	1222 50 150 12 1	1222 50 150 12 2
KA90R2 520	200	1,50	2,973	1222 50 200 15 1	1222 50 200 15 2
KA90R2 525	250	1,50	3,534	1222 50 250 15 1	1222 50 250 15 2
KA90R2 530	300	1,50	4,154	1222 50 300 15 1	1222 50 300 15 2
KA90R2 540	400	2,00	7,426	1222 50 400 20 1	1222 50 400 20 2
KA90R2 550	500	2,00	9,627	1222 50 500 20 1	1222 50 500 20 2
KA90R2 560	600	2,00	12,142	1222 50 600 20 1	1222 50 600 20 2

90° Horizontal Bend, radius 600

90° yatay kanal dönüş elemanı, radius 600



Model Number	Width (W) (mm)	Plate Thick. (T) (mm)	Weight (kg/pcs)	Order Code (PG)	Order Code (HDG)
KA90R4 505	50	1,20	2,782	1224 50 050 12 1	1224 50 050 12 2
KA90R4 510	100	1,20	3,255	1224 50 100 12 1	1224 50 100 12 2
KA90R4 515	150	1,20	3,775	1224 50 150 12 1	1224 50 150 12 2
KA90R4 520	200	1,50	5,428	1224 50 200 15 1	1224 50 200 15 2
KA90R4 525	250	1,50	6,196	1224 50 250 15 1	1224 50 250 15 2
KA90R4 530	300	1,50	7,022	1224 50 300 15 1	1224 50 300 15 2
KA90R4 540	400	2,00	11,803	1224 50 400 20 1	1224 50 400 20 2
KA90R4 550	500	2,00	14,557	1224 50 500 20 1	1224 50 500 20 2
KA90R4 560	600	2,00	17,626	1224 50 600 20 1	1224 50 600 20 2

Other Radius Options

Diğer Radyüs Opsiyonları

Different radius options may be ordered

Farklı radyüs opsiyonları sipariş verilebilir.

Radius	Model Number	Order Code (PG)	Order Code (HDG)
R:150	KA90R1 ...	1221 50 ... 1	1221 50 ... 2
R:450	KA90R3 ...	1223 50 ... 1	1223 50 ... 2