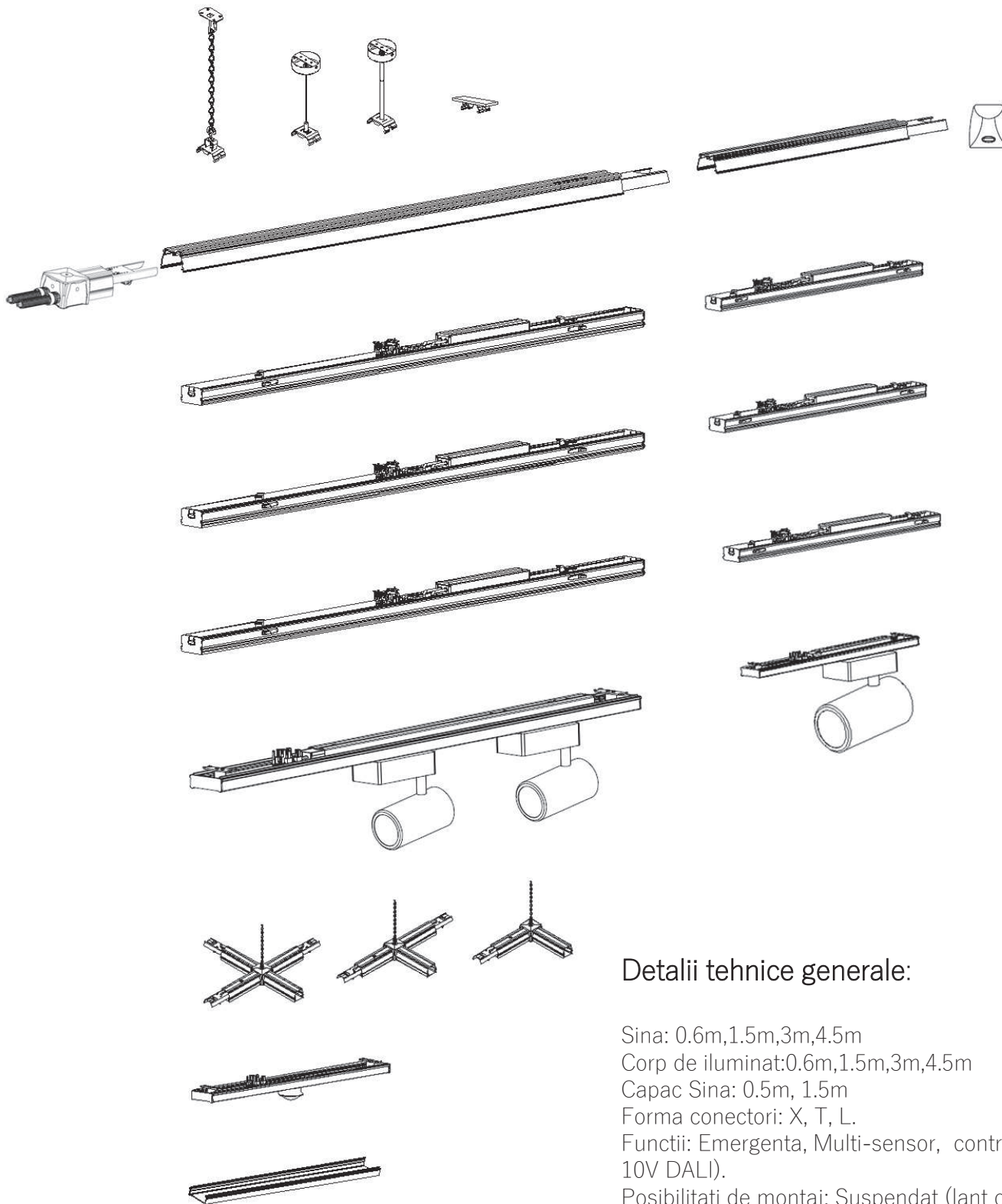


Ansamblu sistem:



Detalii tehnice generale:

Sina: 0.6m,1.5m,3m,4.5m

Corp de iluminat:0.6m,1.5m,3m,4.5m

Capac Sina: 0.5m, 1.5m

Forma conectori: X, T, L.

Functii: Emergenta, Multi-sensor, control (1-10V DALI).

Posibilitati de montaj: Suspendat (lant cordon otelit, tija), montaj aplicat