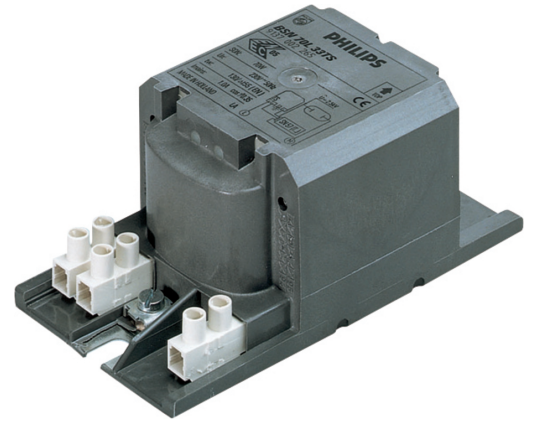


# PHILIPS

## Lighting



# HID-HeavyDuty BSN semi-parallel for SON/CDO/MH/HPI

## BSN 250 L33-TS 230V 50Hz HD2-151

Encapsulated electromagnetic copper/iron ballasts for use with an external semi-parallel ignitor for CDM, CDO, MH, HPI (Plus) and SON lamps

### Product data

General Information	
Application Code	L33-TS
Design	HD2-151
Lamp Type	SON/HPI/CDM
Number of Lamps	1 piece/unit

Operating and Electrical	
Input Voltage	230 V
Input Frequency	50 Hz
Power Factor 100% Load (Nom)	0.87
Mains Voltage Performance (AC)	-8%+6%
Mains Voltage Safety (AC)	-10%+10%
Input Current with PF Correction	1.40 A
Input Current without PF Correction	3.00 A
Power Factor without PF Compensation (Nom)	0.40
Power Losses (Nom)	29.0 W

Wiring	
Wire Striplength	7.0 mm

Ballast Contact Wire Cross Section	0.70-6.00 mm <sup>2</sup>
Connector Type	Screw

System characteristics	
Capacitor	32µF/250V
Rated Ballast-Lamp Power	250 W
Recommended Ignitor	for SON/CDO lamps ignitor SN 58 (913619579966) OR SND 58 (913700185166)

Temperature	
T-Storage (Max)	130 °C
T-Storage (Min)	-30 °C
T-Winding (Max)	130 °C
Delta-T Normal Conditions	80 °C

Approval and Application	
Active Temperature Protection	Yes
Approval Marks	CE marking ENEC certificate

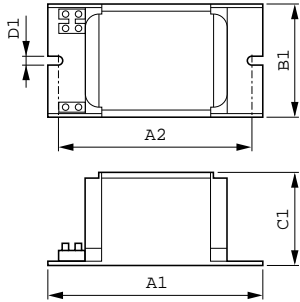
## HID-HeavyDuty BSN semi-parallel for SON/CDO/MH/HPI

### Product Data

Full product code	871150005964230
Order product name	BSN 250 L33-TS 230V 50Hz HD2-151
EAN/UPC - Product	8711500059642
Order code	913700226326
Numerator - Quantity Per Pack	1

Numerator - Packs per outer box	6
Material Nr. (12NC)	913700226326
Net Weight (Piece)	2.700 kg

### Dimensional drawing



Product	D1	C1	A1	A2	B1
BSN 250 L33-TS 230V 50Hz HD2-151	6.2 mm	66.0 mm	151.0 mm	132.5 mm	81.0 mm

BSN 250 L33-TS 230V 50Hz HD2-151

