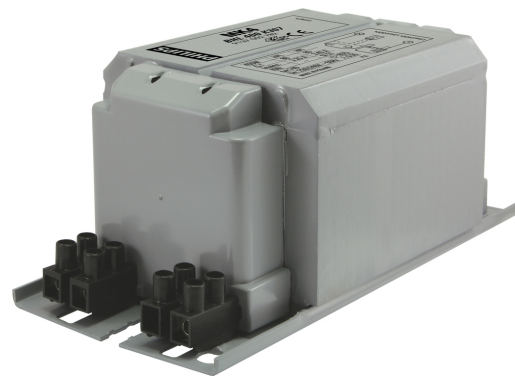


PHILIPS

Lighting



HID-Basic BHL for HPL/HPI

BHL 400 K202-A2 230V 50Hz BC2-151

Impregnated electromagnetic copper/iron ballasts for HPL, HPI (Plus) and SON-H lamps

Product data

General Information

Application Code	K202-A2
Design	BC2-151
Lamp Type	HPL/HPI
Number of Lamps	1 piece/unit

Operating and Electrical

Input Voltage	230 V
Input Frequency	50 Hz
Power Factor 100% Load (Nom)	2.15
Mains Voltage Performance (AC)	-8%~+6%
Mains Voltage Safety (AC)	-10%~+10%
Input Current with PF Correction	2.15 A
Input Current without PF Correction	3.25/3.40 A
Power Factor without PF Compensation (Nom)	3.25

Wiring

Wire Striplength	7.0 mm
Ballast Contact Wire Cross Section	2.5 mm ²
Connector Type	Screw

System characteristics

Capacitor	25 μ F/28 μ F/250V (230V/240V)
Rated Ballast-Lamp Power	400 W
Recommended Ignitor	no ignitor for HPL-N for HPI-T ignitor SI51 (913619519966)

Temperature

T-Storage (Max)	130 °C
T-Storage (Min)	-30 °C
T-Winding (Max)	130 °C
Delta-T Normal Conditions	80/85 °C

Approval and Application

Approval Marks	CE marking ENEC certificate
----------------	-----------------------------

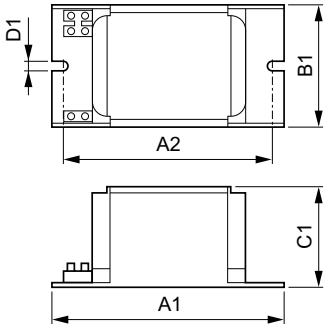
Product Data

Full product code	872790094076300
Order product name	BHL 400 K202-A2 230V 50Hz BC2-151
EAN/UPC - Product	8727900940763
Order code	913700284626
Numerator - Quantity Per Pack	1
Numerator - Packs per outer box	6

HID-Basic BHL for HPL/HPI

Material Nr. (12NC)	913700284626
Net Weight (Piece)	2.998 kg

Dimensional drawing



BHL 400 K202 230V 50Hz BC2-151

Product	D1	C1	A1	A2	B1
BHL 400 K202-A2 230V 50Hz	6.2 mm	65.0 mm	150.0 mm	129.0 mm	76.0 mm
BC2-151					

