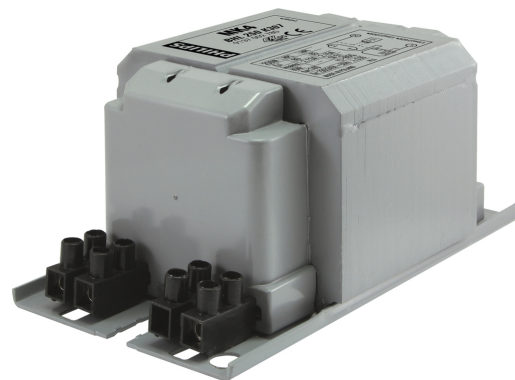


# PHILIPS

## Lighting



# HID-Basic BHL for HPL/HPI

## BHL 250 K202-A2 230V 50Hz BC2-126

Impregnated electromagnetic copper/iron ballasts for HPL, HPI (Plus) and SON-H lamps

### Product data

#### General Information

Application Code	K202-A2
Design	BC2-126
Lamp Type	HPL/HPI
Number of Lamps	1 piece/unit

#### Operating and Electrical

Input Voltage	230 V
Input Frequency	50 Hz
Power Factor 100% Load (Nom)	0.55
Mains Voltage Performance (AC)	-8%~+6%
Mains Voltage Safety (AC)	-10%~+10%
Input Current with PF Correction	0.85 A
Power Factor without PF Compensation (Nom)	0.85

#### Wiring

Wire Striplength	7.0 mm
Ballast Contact Wire Cross Section	2.5 mm <sup>2</sup>
Connector Type	Screw

#### System characteristics

Capacitor	18µF/250V
-----------	-----------

Rated Ballast-Lamp Power	250 W
Recommended Ignitor	no ignitor for HPL-N for HPI-T ignitor SI51 (913619519966)

#### Temperature

T-Storage (Max)	130 °C
T-Storage (Min)	-30 °C
T-Winding (Max)	130 °C
Delta-T Normal Conditions	85 °C

#### Approval and Application

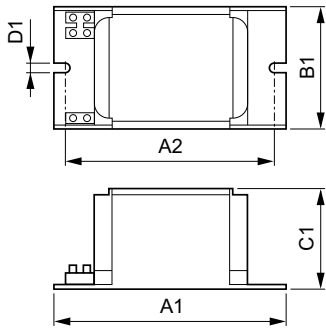
Approval Marks	CE marking ENEC certificate
----------------	-----------------------------

#### Product Data

Full product code	872790094064000
Order product name	BHL 250 K202-A2 230V 50Hz BC2-126
EAN/UPC - Product	8727900940640
Order code	913700283226
Numerator - Quantity Per Pack	1
Numerator - Packs per outer box	6
Material Nr. (12NC)	913700283226
Net Weight (Piece)	2.020 kg

## HID-Basic BHL for HPL/HPI

### Dimensional drawing



BHL 250 K202 230V 50Hz BC2-126

Product	D1	C1	A1	A2	B1
BHL 250 K202-A2 230V 50Hz	6.2 mm	65.0 mm	126.0 mm	104.0 mm	76.0 mm
BC2-126					

