



Limitatoare de cursă tip LS15 2



Limitatoare de cursă, tip LS7 5



Limitatoare de cursă, tip LSME... 8



Limitatoare de cursă, tip VP... 12



Limitatoare de cursă, tip VT... 16



Limitatoare de cursă, tip VM 20



Limitatoare de cursă KW (micro-interrupătoare) 24



Butoane simple 26



Butoane în relief 26



Butoane cu semnalizare luminoasă 28



Butoane inscripționate 28



Butoane tip ciupercă 29



Butoane duble, pornit/oprit 30



Comutatoare cu braț 30



Comutatoare cu braț luminos 31



Comutatoare cu cheie 31



Elemente de contact 32



Carcase 32



Accesorii 34



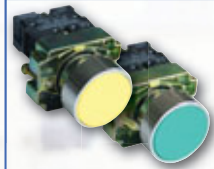
Indicatoare de tensiune, curent, sonerii 35



Coloane de semnalizare luminoasă 35



Lămpi de semnalizare cu LED, tip L.JL... 36



Butoane simple 37



Butoane inscripționate 38



Butoane de avarie tip ciupercă, cu cheie 39



Butoane duble, pornit/oprit 40



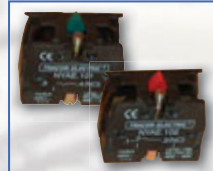
Comutatoare cu braț 42



Comutatoare cu cheie 43



Recuri de semnalizare 44



Elemente de contact 44



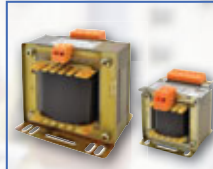
Carcase 45



Înterupătoare de siguranță cu releu 46



Înterupătoare pentru aparate 48



Transformatoare de separație monofazate TVTR 52



Transformatoare monofazate de siguranță și izolare TVTRB 54

Pictogramele capului de tabel

Um Tensiunea nominală de acționare	P_n Putere nominală	Putere nominală	Note, completări
U_{pr} Tensiunea primară	U_{sec} Tensiune secundară	I_{sec} Curent secundar	P_{sec} Putere secundară
Două poziții	Trei poziții	Poziție scoatere cheie (stânga)	Poziție scoatere cheie (stânga sau dreapta)
Poziție scoatere cheie (central)	Poziție scoatere cheie	REL-ON Deblocare prin rotire	REL-ON Deblocare cu cheie
NC NO Date electrice contacte	Unități de semnalizare luminoasă	Dimensiuni	Tipul soclului
Nm Moment de strângere	M Filet	Fișe și mufe glisante	Presetupe
Varianta de bază	IP44 În carcasă IP 44	IP Grad de protecție	Culoare
m Masa	Sonerie	IP 65 Grad de protecție dinspre partea frontală	

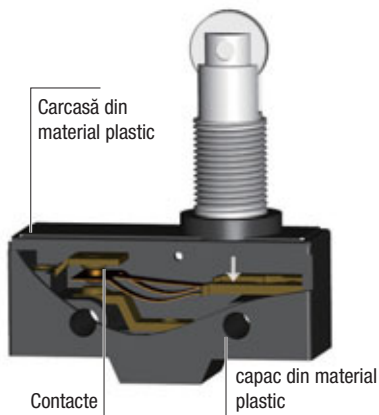
Pictogramele datelor tehnice

230/400 V AC Tensiune nominală (V)	Um max. 400 V Tensiunea nominală de acționare	Ui 660 V Tensiunea nominală de izolare	U_{imp} 6 kV Tensiune nominală de țineră la impuls
I_e (AC 1, 230 V) 15 A Curent nominal de lucru	50/60 Hz Frecvența nominală	10 A G Siguranța din amonte recomandată	0,5-2,5 Secțiunea conductorului de racord
Capul de acționare poate fi rotit în trepte de 90°!	Capul și brațul de acționare pot fi rotite în trepte de 90°!	F_{on} max. 20 N Forța de acționare la închidere	F_{off} max. 15 N Forța de acționare la deschidere
Durata de viață mecanică ×10⁶	E +120 °C Clasa de temperatură	Clasa I de protecție la atingere	ON-OFF-ON... sc/h ×3.600 Frecvența de conectare (comutări/oră)
IP 42 Gradul de protecție instalat, la panoul frontal	IP 20 Gradul de protecție a bornelor (bază)	IP 55 Grad de protecție	Rezistență la vibrații
max. 95 Umiditate relativă	T_a -25..+55°C Temperatura mediului ambiant	22 mm Dimensiunea decupării	

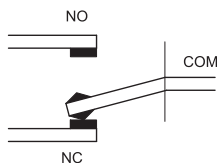


Limitatoare de cursă tip LS15

I_{th} 15 A	I_e (AC 1, 230 V) 5 A	I_e (AC 15, 230 V) 2 A	I_e (DC 13, 230 V) 0,3 A	U_i 500 V	mm² 0,5-1,5	×10⁶ x1.800	T_a -25...+55°C	IP 00
-------------------------------	---	--	--	-------------------------------	----------------------------------	----------------------------------	-------------------------------------	-----------------



Tipul contactelor: C



RELEVANT STANDARD
EN 60947-1

RELEVANT STANDARD
EN 60947-5-1

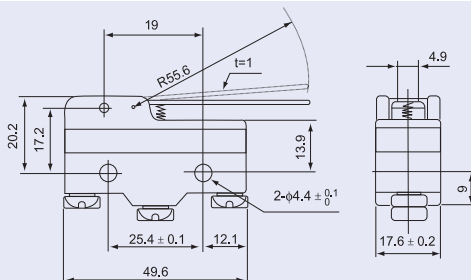
- carcasă solidă
- contact alternant
- punct de conexiune cu papuci inelari
- cablare ușoară
- mai multe mecanisme de comutare

Varianta cu tijă și arc

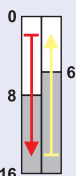


Cursa de acțiune (mm)

TRACON LS15GM-B

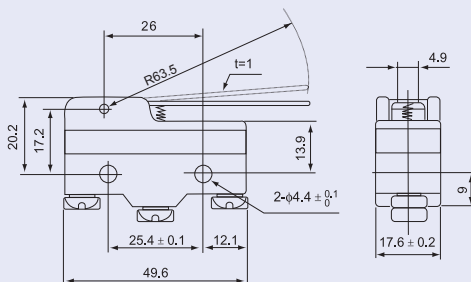


Varianta cu tijă și arc

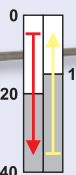


Cursa de acțiune (mm)

TRACON LS15GW-B

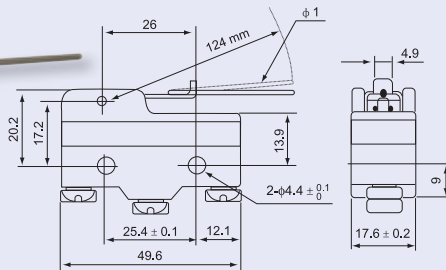


Varianta cu tijă și arc

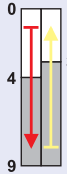


Cursa de acțiune (mm)

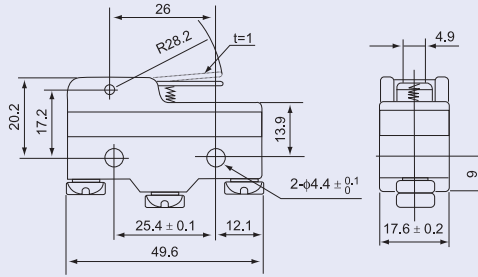
TRACON LS15HW24-B



Varianta cu tijă și arc

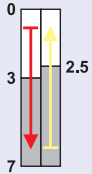


Cursa de acționare (mm)

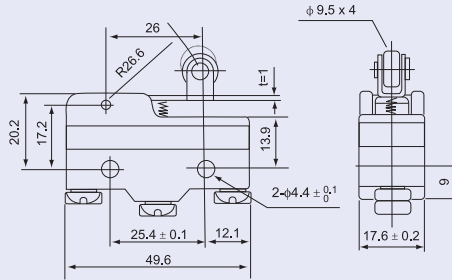


TRACON LS15GW21-B

Varianta cu tijă, arc și rolă

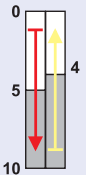


Cursa de acționare (mm)

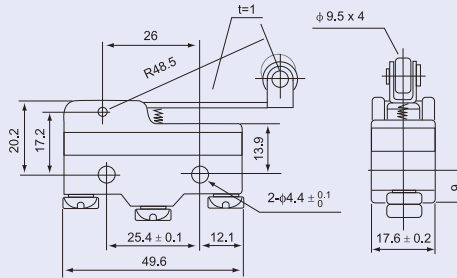


TRACON LS15GW22-B

Varianta cu tijă, arc și rolă

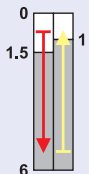


Cursa de acționare (mm)

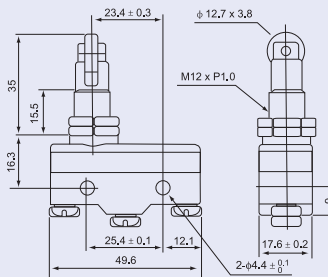


TRACON LS15GW2-B

Varianta cu rolă la 90°

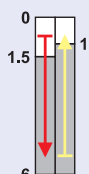


Cursa de acționare (mm)

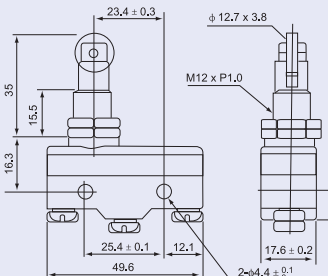


TRACON LS15GQ21-B

Varianta cu rolă

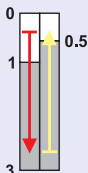


Cursa de acționare (mm)



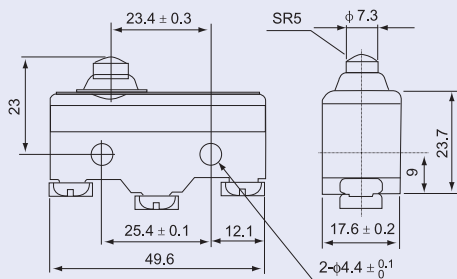
TRACON LS15GQ22-B

Varianta cu tampon conic

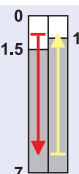


Cursa de acționare (mm)

TRACON LS15GD-B

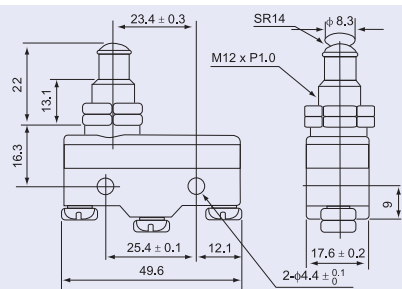


Varianta cu tampon conic lung

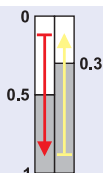


Cursa de acționare (mm)

TRACON LS15GQ-B

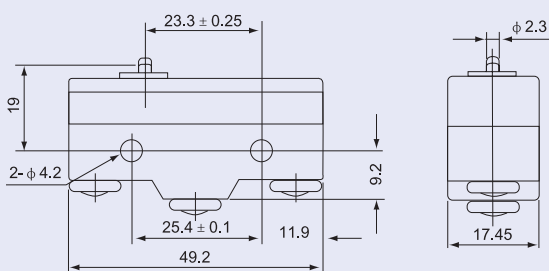


Varianta cu tampon



Cursa de acționare (mm)

TRACON LS15G-B



Carcasă limitator LS15



IP 40



TRACON LS15-C0V



Relee



J/2-J/9

Limitatoare de cursă, tip LS7...

I_{th} 10 A	I_e (AC 1, 230 V) 5 A	I_e (AC 16, 230 V) 2 A	I_e (DC 13, 250 V) 0,3 A	U_i 500 V	mm² 0,5-1,5	× 10 ⁶	ON-OFF-ON ↑ sc/h x1.800	T_a -25...+55°C	IP 40	Legendă pictograme	K/0
-------------------------------	---	--	--	-------------------------------	----------------------------------	-----------------------------	--	-------------------------------------	-----------------	---------------------------	------------

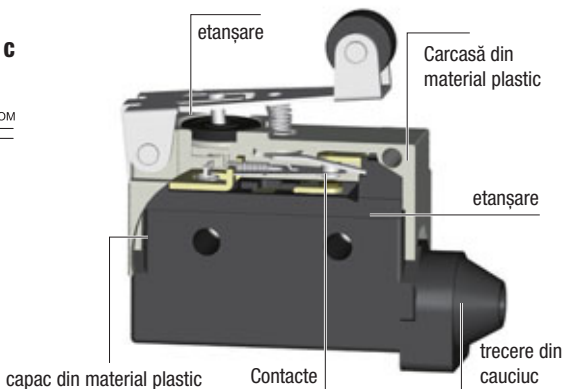
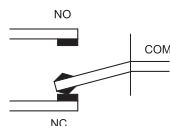
**RELEVANT STANDARD
EN 60947-1**

**RELEVANT STANDARD
EN 60947-5-1**

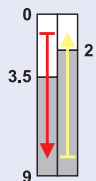
- carcasă solidă
- contact alternant
- punct de conexiune cu papuci inelari
- cablare ușoară
- mai multe mecanisme de comutare



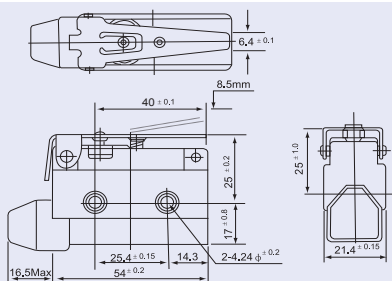
Tipul contactelor: C



Varianta cu tijă și arc

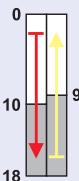


Cursa de acționare (mm)

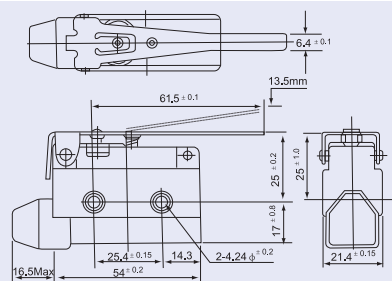


TRACON LS7140

Varianta cu tijă și arc

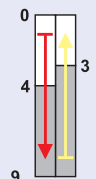


Cursa de acționare (mm)

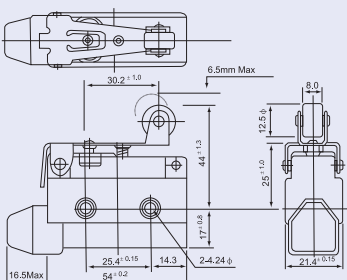


TRACON LS7120

Varianta cu tijă, arc și rolă

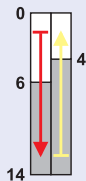


Cursa de acționare (mm)



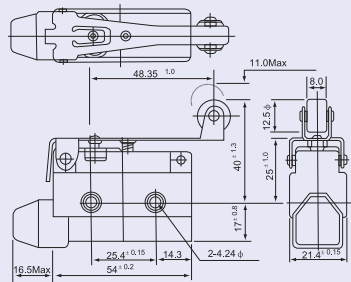
TRACON LS7141

Varianta cu tijă, arc și rolă

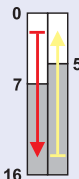


Cursa de acționare (mm)

TRACON LS7121

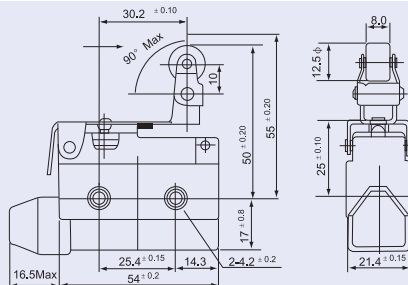


Varianta cu tijă, arc și rolă articulată

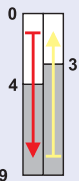


Cursa de acționare (mm)

TRACON LS7144

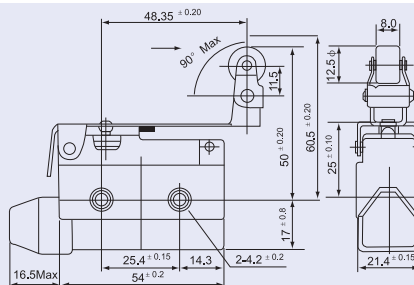


Varianta cu tijă, arc și rolă articulată

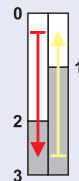


Cursa de acționare (mm)

TRACON LS7124

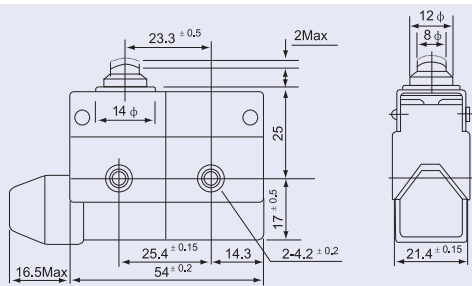


Varianta cu tampon

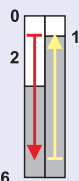


Cursa de acționare (mm)

TRACON LS7100

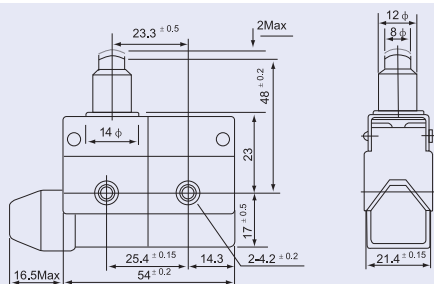


Varianta cu tampon conic

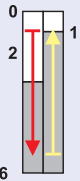


Cursa de acționare (mm)

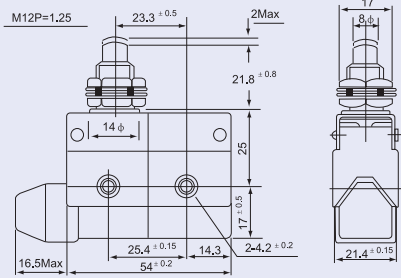
TRACON LS7110



Varianta cu tampon conic

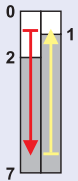


Cursa de acționare (mm)

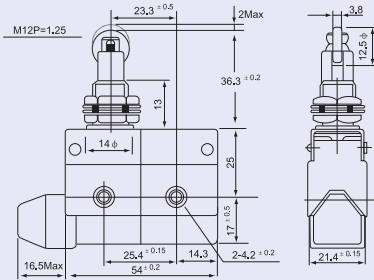


TRACON LS7310

Varianta cu rolă

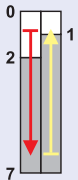


Cursa de acționare (mm)

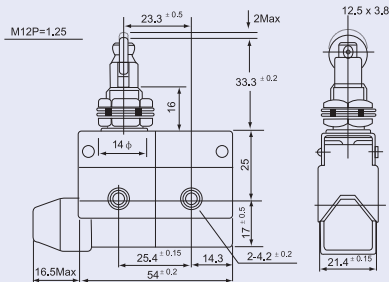


TRACON LS7311

Varianta cu rolă la 90°

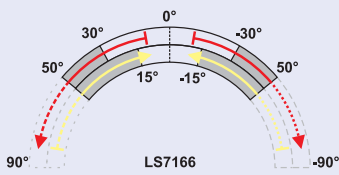


Cursa de acționare (mm)

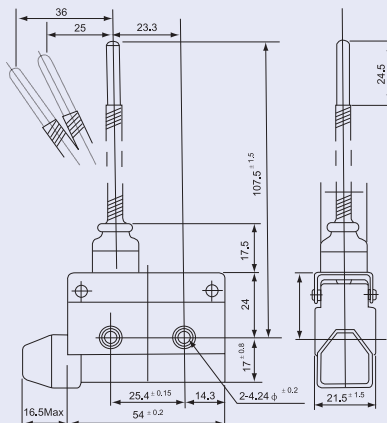


TRACON LS7312

Varianta cu arc și tijă



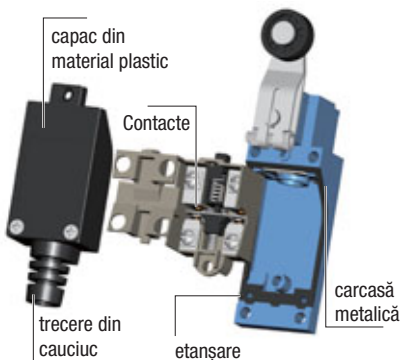
Cursa de acționare (°)



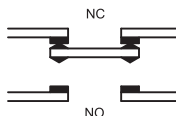
TRACON LS7166

Limitatoare de cursă, tip LSME...

I_{th} 10 A	I_e (AC 1, 230 V) 5 A	I_e (AC 15, 230 V) 2 A	I_e (DC 13, 230V) 0,3 A	U_i 500 V	mm² 0,5-1,5	ON-OFF-ON... sc/h ×1.800	T_a -25...+55°C	IP 65
-------------------------------	---	--	---	-------------------------------	----------------------------------	--	-------------------------------------	-----------------



Tipul contactelor: Za



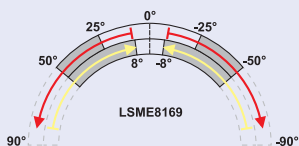
**RELEVANT STANDARD
EN 60947-1**

**RELEVANT STANDARD
EN 60947-5-1**

- contacte duble
- construcție masivă
- carcasă turnată din aluminiu și material plastic

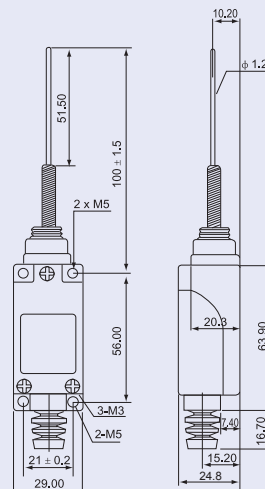
- rezistent la apă și uleiuri
- mecanism cu arc dublu
- durată lungă de viață
- cablare ușoară

Varianta cu arc și tijă

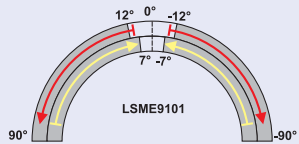


Cursa de acțiune (grade)

TRACON LSME8169

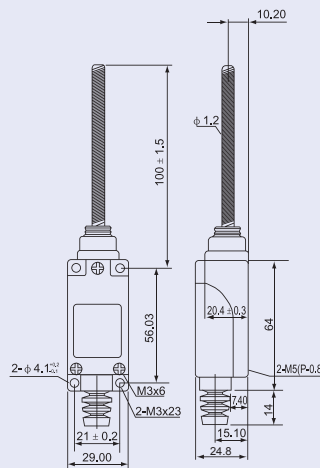


Varianta cu arc și tijă

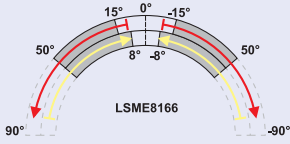


Cursa de acțiune (grade)

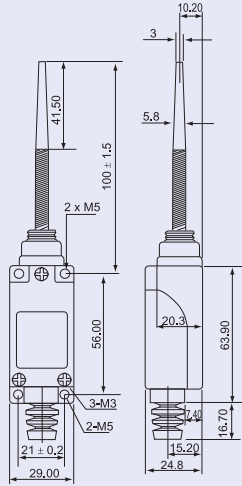
TRACON LSME9101



Varianta cu arc și tijă

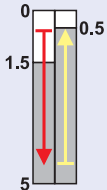


Cursa de acționare (grade)

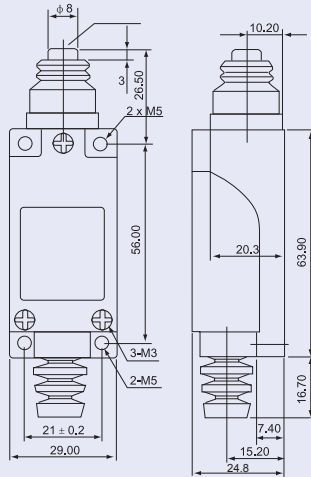


TRACON LSME8166

Varianta cu tampon conic

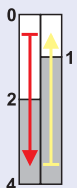


Cursa de acționare (mm)

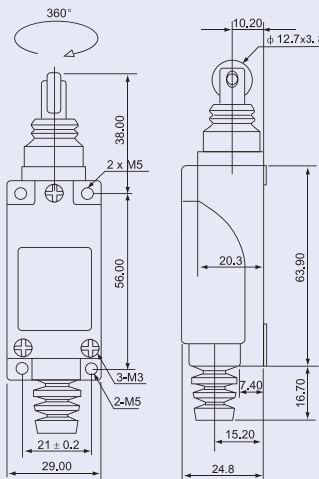


TRACON LSME8111

Varianta cu rolă la 90°

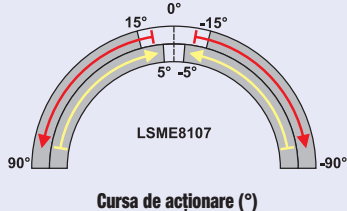


Cursa de acționare (mm)

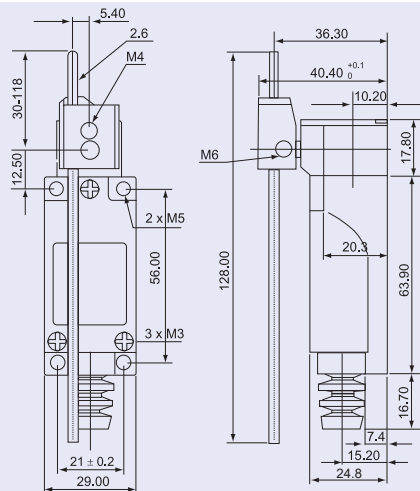


TRACON LSME8122

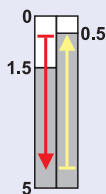
Varianta cu braț balansier și tijă



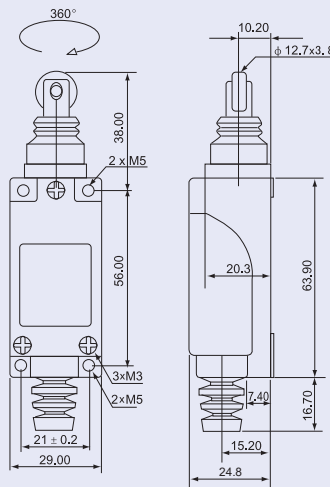
TRACON LSME8107



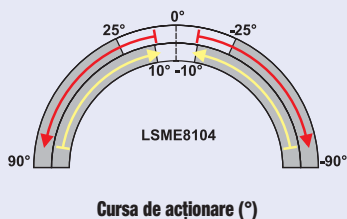
Varianta cu roță



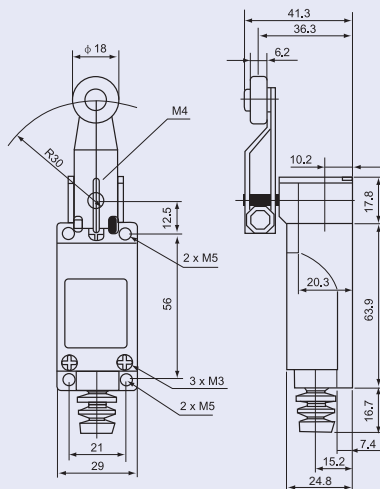
TRACON LSME8112



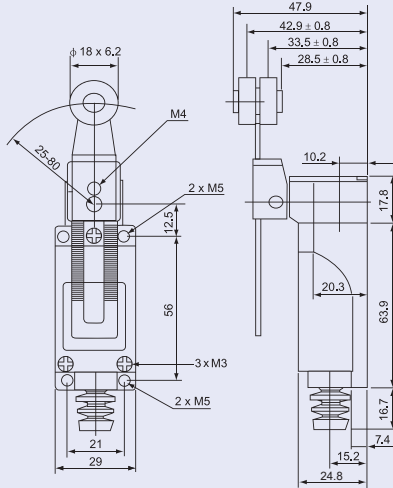
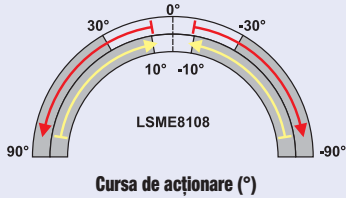
Varianta cu braț balansier



TRACON LSME8104



Varianta cu braț reglabil și rolă



TRACON LSME8108

DACĂ TREBUIE SĂ LIPEASCĂ CU ADEVĂRAT

Gamă largă de culori

Lungimea 10 și 20 de metri

Lățimea de la 15 mm la 50 mm

Aderență bună

Calitate verificată

TRACON
.....ELECTRIC®

M/2



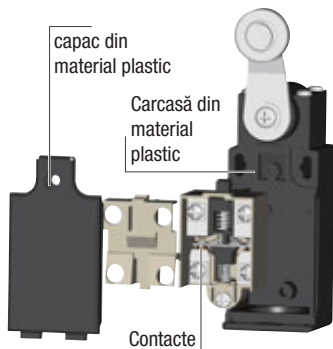
CITIȚI CODUL !

- Vezi noutățile noastre
- Fiți informat

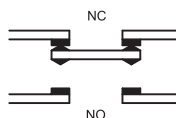
Gama de produse se dezvoltă continuu și rapid!
Catalogul nostru reflectă situația din Aprilie 2019.
Pentru informații actualizate vizitați pagina
noastră de internet!

Limitatoare de cursă, tip VP...

I_{th} 10 A	I_e (AC 1, 230 V) 5 A	I_e (AC 15, 230 V) 2 A	I_e (DC 13, 230 V) 0,3 A	U_i 500 V	mm² 0,75-1,5	5x10⁶	ON-OFF-ON... sc/h x1.800	T_a -25...+55°C	IP 65
-------------------------------	---	--	--	-------------------------------	-----------------------------------	-------------------------	--	-------------------------------------	-----------------



Tipul contactelor: Za

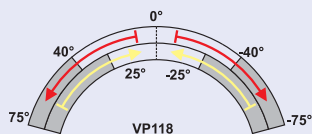
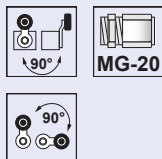


- contacte duble
- carcasă din material plastic solidă
- construcție masivă
- comutare precisă
- durată lungă de viață
- cablare ușoară

RELEVANT STANDARD
EN 60947-5-1

RELEVANT STANDARD
EN 60947-1

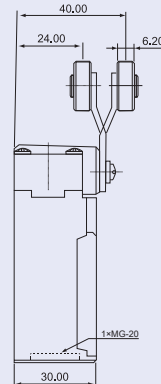
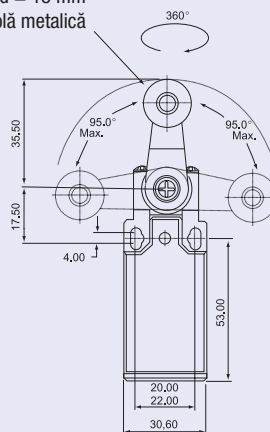
Varianta cu braț balansier



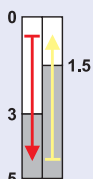
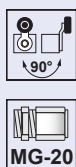
Cursa de acționare (°)

TRACON VP118

d = 18 mm
rolă metalică



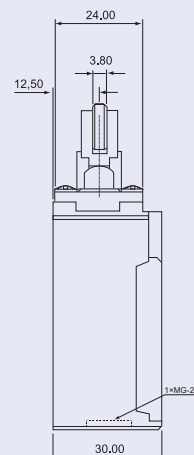
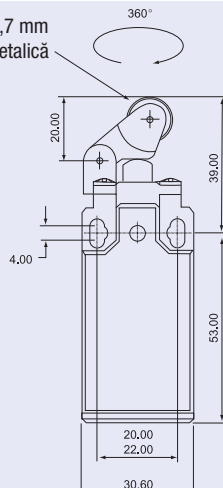
Varianta cu rolă și tampon



Cursa de acționare (mm)

TRACON VP121

d = 12,7 mm
rolă metalică

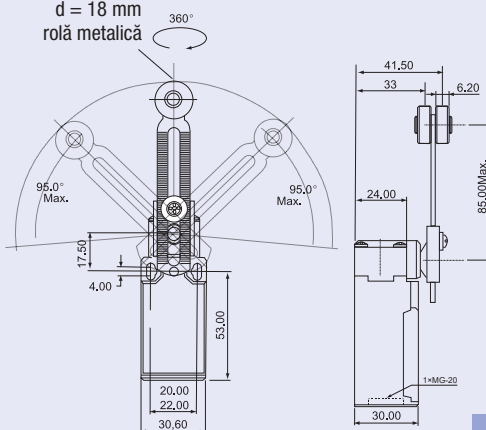


Varianta cu braț reglabil și rolă



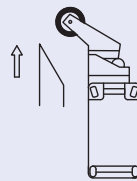
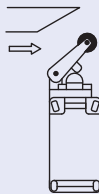
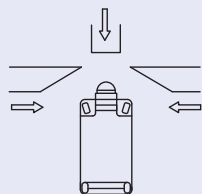
Cursa de acționare (°)

d = 18 mm
rolă metalică



TRACON VP145

Direcții de acționare



VARIANTA ADECVATĂ PENTRU FIECARE APLICAȚIE !

Material plastic / metalic

4-64 module

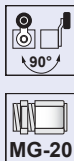
Varianta constructivă ST și PT

TRACON
ELECTRIC®

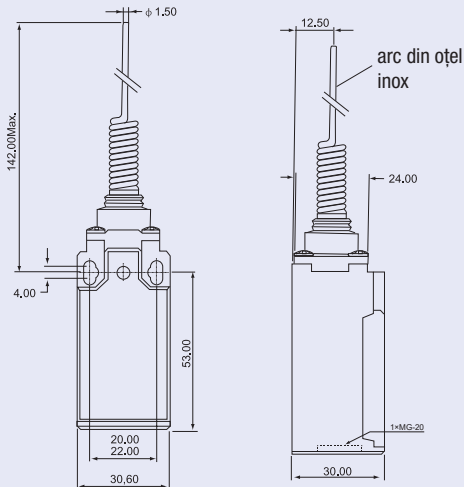
H/9



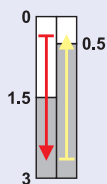
Varianta cu arc



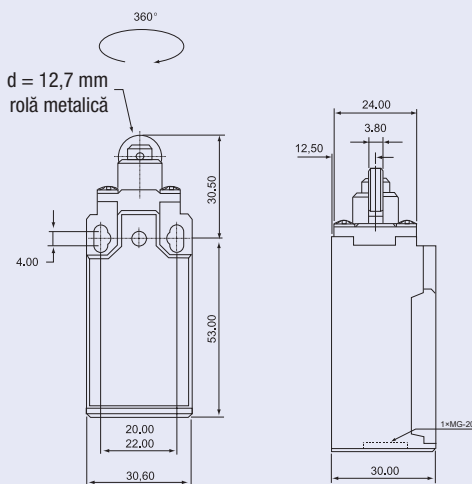
TRACON VP106



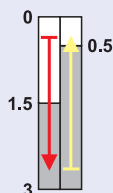
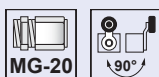
Varianta cu rolă



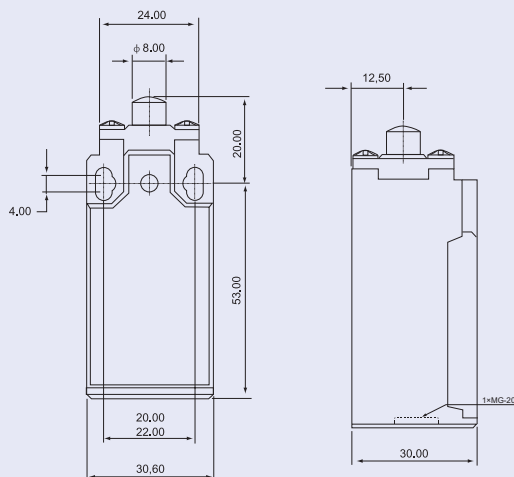
TRACON VP102



Varianta cu tampon conic

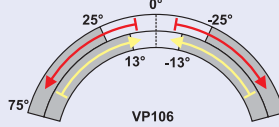
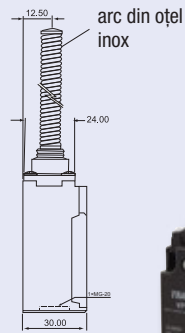
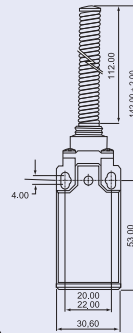
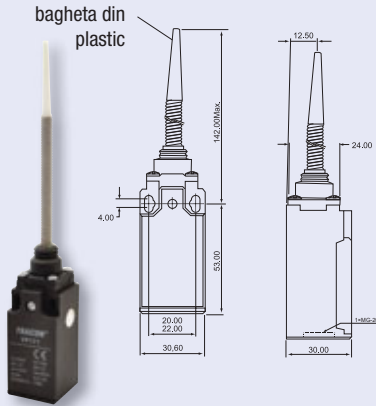


TRACON VP110



Varianta cu arc și tijă

Varianta cu arc

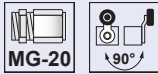


Cursa de acționare (mm)

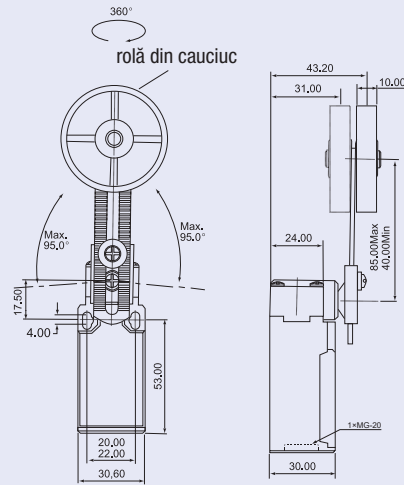
TRACON VP171

TRACON VP181

Varianta cu rolă

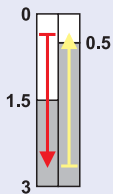
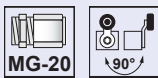


Cursa de acționare (°)

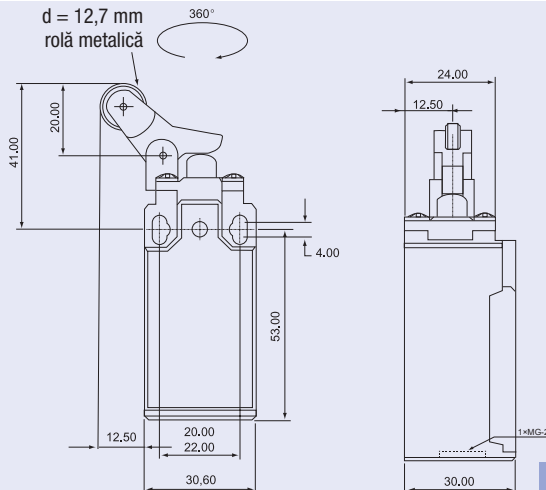


TRACON VP191

Varianta cu rolă și tampon



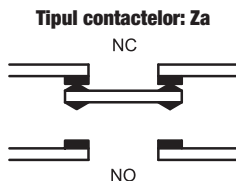
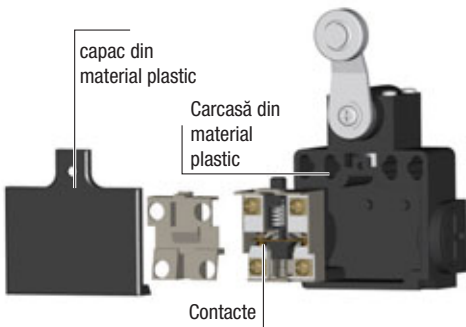
Cursa de acționare (mm)



TRACON VP127

Limitatoare de cursă, tip VT...

I_{th} 10 A	I_e (AC 1, 230 V) 5 A	I_e (AC 15, 230 V) 2 A	I_e (DC 13, 230 V) 0,3 A	U_i 500 V	mm² 0,75-1,5	ON-OFF-ON... sc/h ×1.800	T_a -25...+55°C	IP 65
-------------------------------	---	--	--	-------------------------------	-----------------------------------	--	-------------------------------------	-----------------

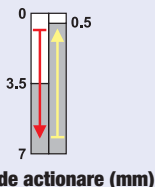


RELEVANT STANDARD
EN 60947-1

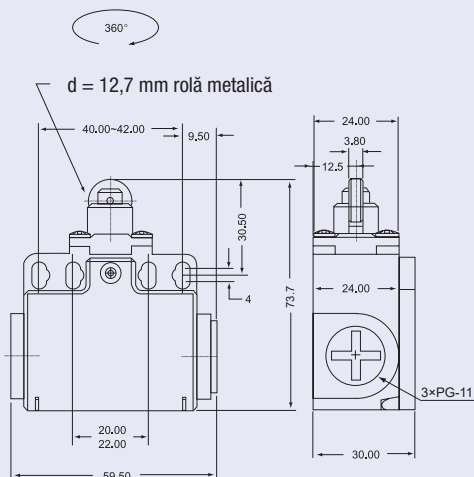
RELEVANT STANDARD
EN 60947-5-1

- contacte duble
- carcasă din material plastic solidă
- construcție masivă
- comutare precisă
- durată lungă de viață

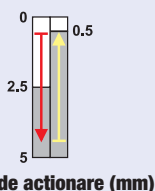
Varianta cu rolă



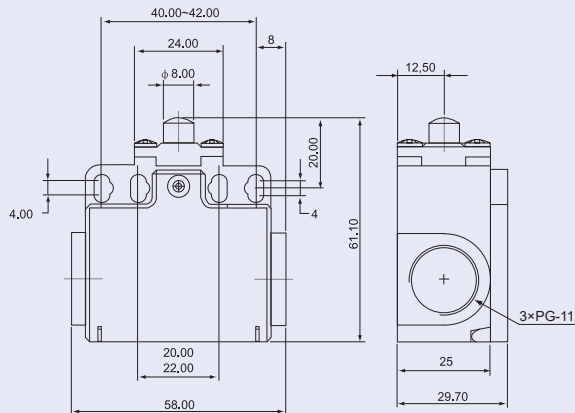
TRACON VT102



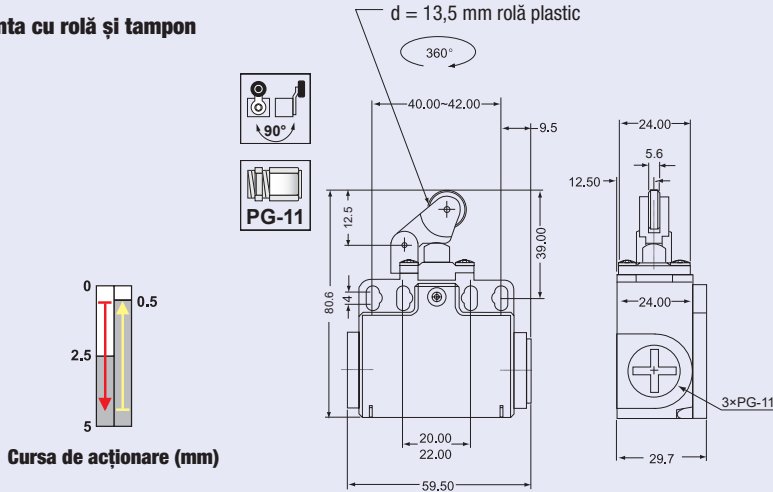
Varianta cu tampon conic



TRACON VT110

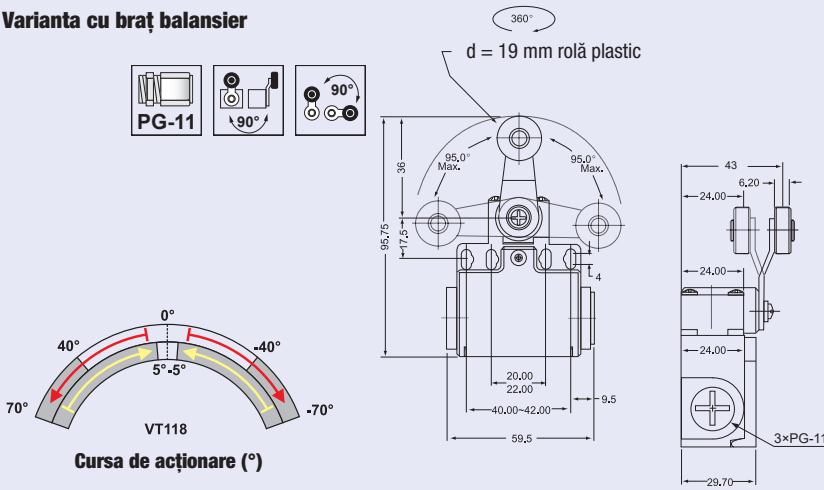


Varianta cu rolă și tampon



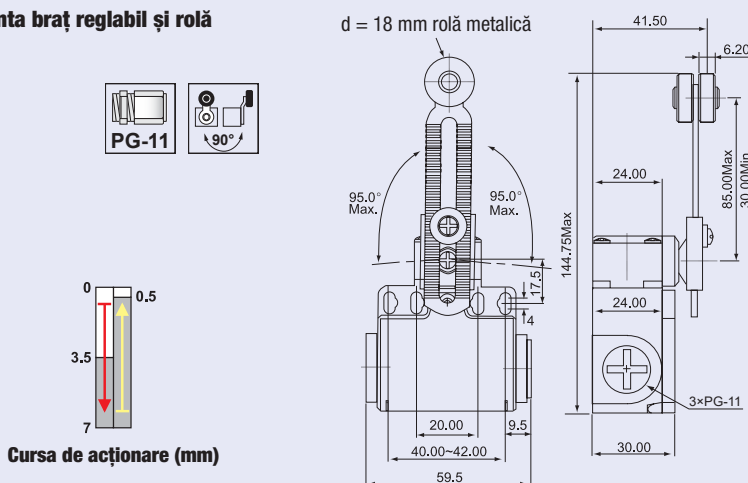
TRACON VT121

Varianta cu braț balansier



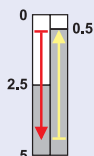
TRACON VT118

Varianta braț reglabil și rolă



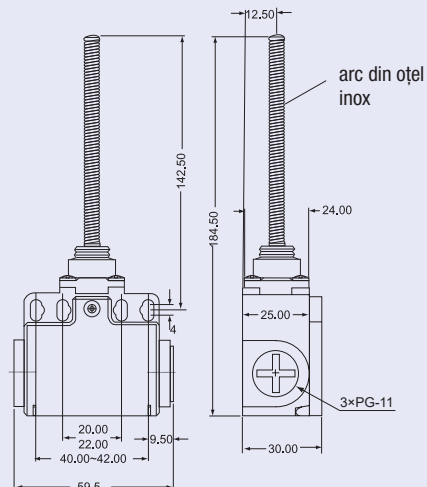
TRACON VT145

Varianta cu arc

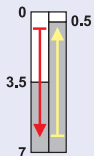


Cursa de acționare (mm)

TRACON VT181

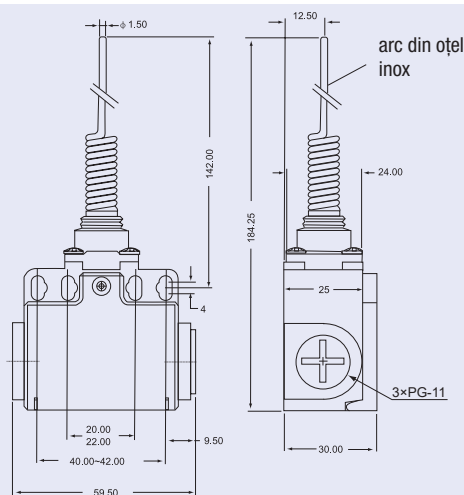


Varianta cu arc și tijă

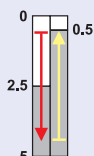


Cursa de acționare (mm)

TRACON VT106

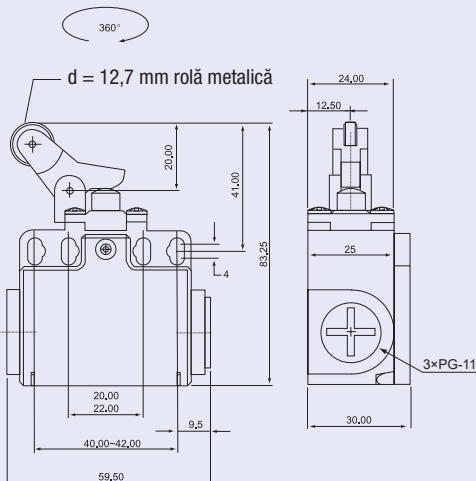


Varianta cu rolă și tampon

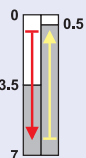


Cursa de acționare (mm)

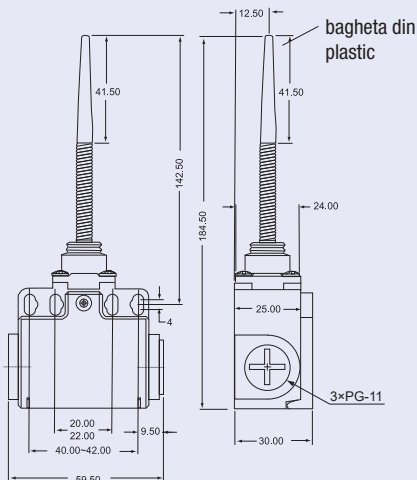
TRACON VT127



Varianta cu arc și tijă



Cursa de acționare (mm)

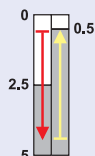
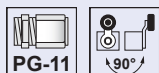


bagheta din plastic

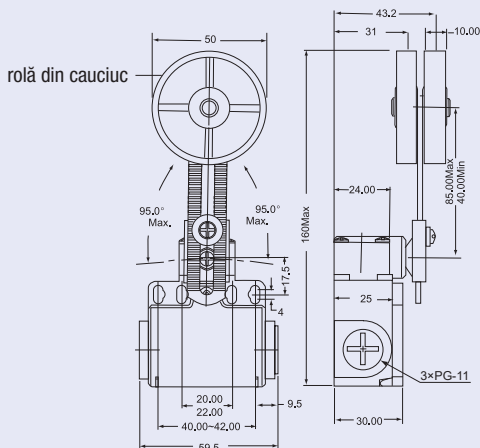


TRACON VT171

Varianta cu braț reglabil și roță



Cursa de acționare (mm)



rolă din cauciuc



TRACON VT191

PANOURI CU LED

Variante constructive aparente și
încorporabile

De la 6 W la 48 W

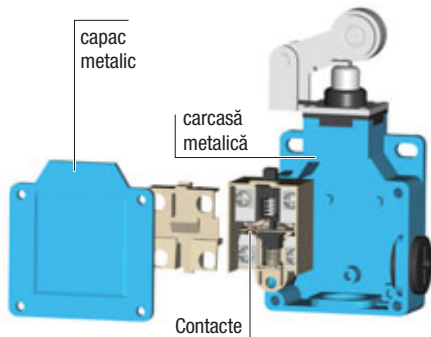
Pentru acasă și birou

TRACON
ELECTRIC®

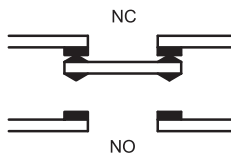
E1/33

Limitatoare de cursă, tip VM

I_{th} 10 A	I_e (AC 1, 230 V) 5 A	I_e (AC 15, 230 V) 2 A	I_e (DC 13, 230 V) 0,3 A	U_i 500 V	mm² 0,75-1,5	5x10⁶	ON-OFF-ON... sc/h ×3.600	T_a -25...+55°C	IP 66	
-------------------------------	---	--	--	-------------------------------	-----------------------------------	-------------------------	---------------------------------------	-------------------------------------	-----------------	--



Tipul contactelor: Za

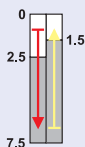
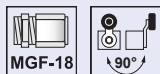


RELEVANT STANDARD
EN 60947-1

RELEVANT STANDARD
EN 60947-5-1

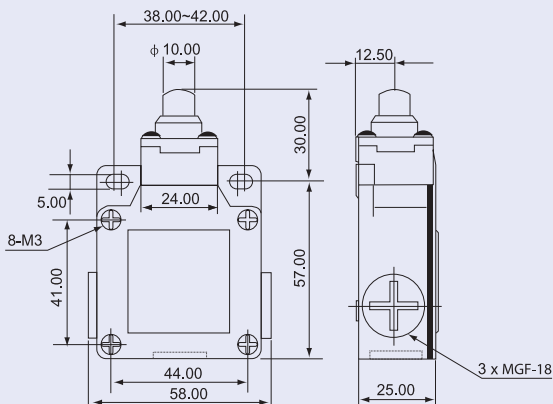
- contacte duble
- capac metallic solid
- construcție masivă
- rezistent la apă și uleiuri
- durată lungă de viață
- cablare ușoară

Varianta cu tampon conic

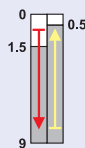
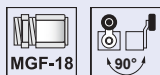


Cursa de acționare (mm)

TRACON VM110

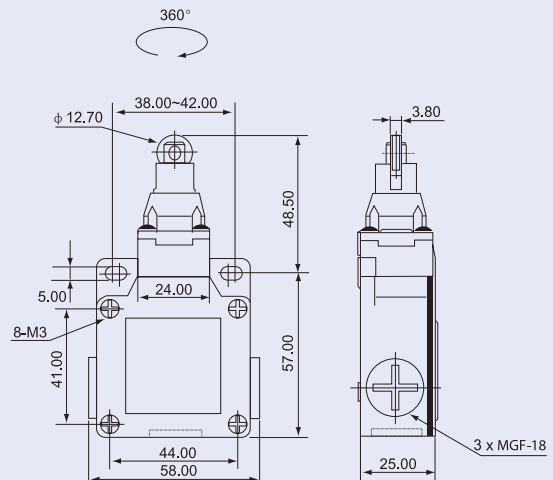


Varianta cu rolă

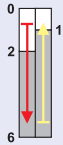
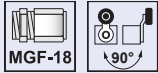


Cursa de acționare (mm)

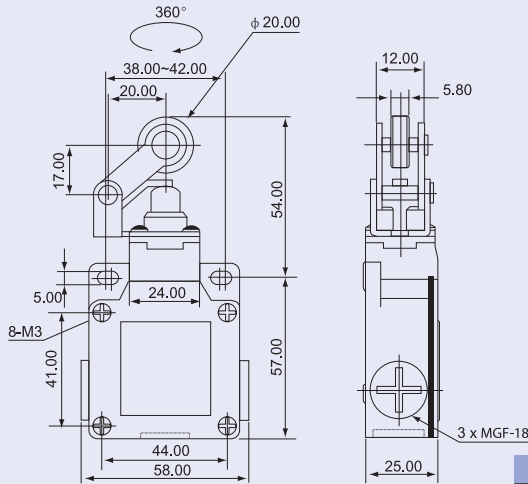
TRACON VM102



Varianta cu rolă și tampon

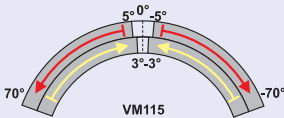
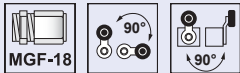


Cursa de acționare (mm)

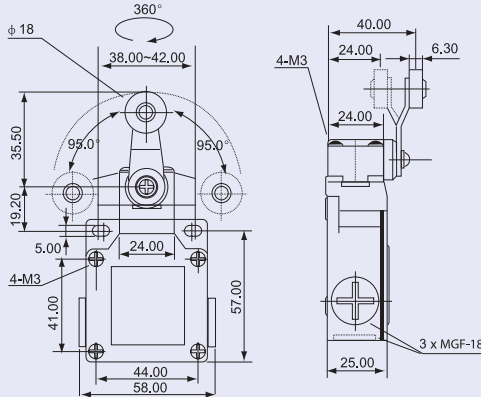


TRACON VM121

Varianta cu braț balansier

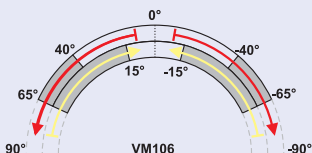
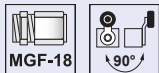


Cursa de acționare (°)

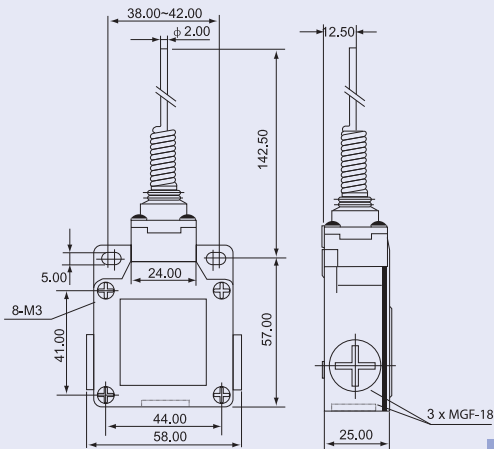


TRACON VM115

Varianta cu arc și tijă

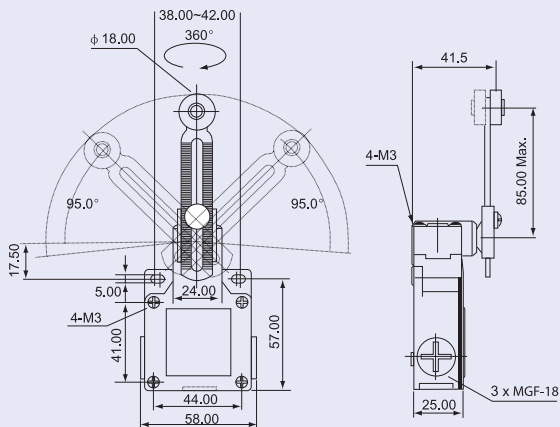
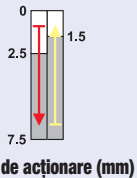
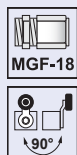


Cursa de acționare (°)



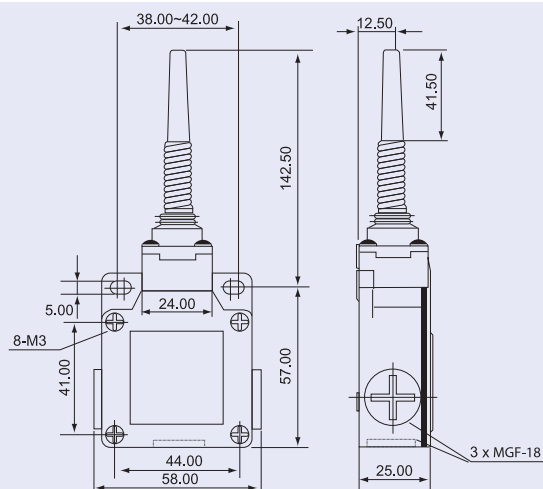
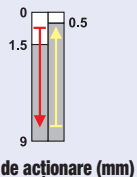
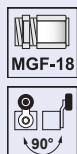
TRACON VM106

Varianta cu braț reglabil și rolă



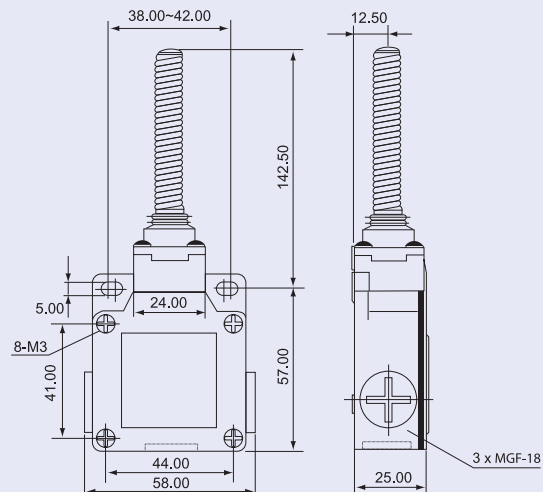
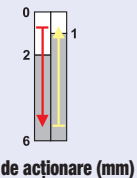
TRACON VM145

Varianta cu arc și tijă



TRACON VM171

Varianta cu arc



TRACON VM181

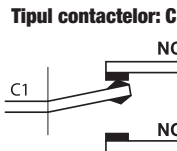
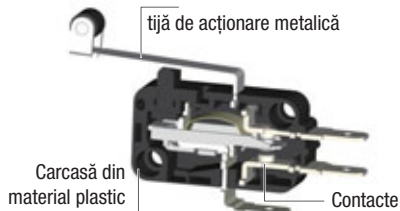
CUTII INDUSTRIALE DE DISTRIBUȚIE



G/28

Limitatoare de cursă KW (micro-întrerupătoare)

I_{th} 10 A	I_e (AC 1, 230 V) 5 A	I_e (AC 15, 230 V) 2 A	I_e (DC 13, 230 V) 0,3 A	U_i 500 V	mm² 0,75-1,5	ON-OFF-ON... sc/h x600	T_a -25...+80°C	IP 00
-------------------------------	---	--	--	-------------------------------	-----------------------------------	--------------------------------------	-------------------------------------	-----------------



RELEVANT STANDARD
EN 60947-1

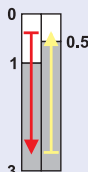
RELEVANT STANDARD
EN 60947-5-1

Varianta cu tampon

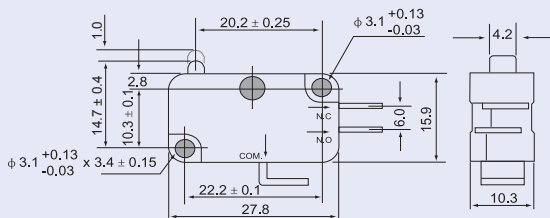


TRACON

KW3-01	6,3x0,8 mm
KW3-05	4,8x0,8 mm



Cursa de acționare (mm)

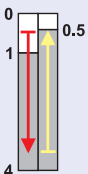


Varianta cu tijă-arc

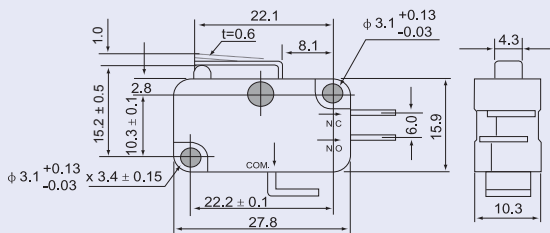


TRACON

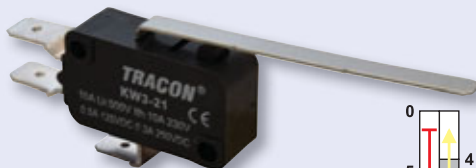
KW3-11	6,3x0,8 mm
KW3-15	4,8x0,8 mm



Cursa de acționare (mm)

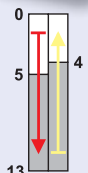


Varianta cu tijă-arc

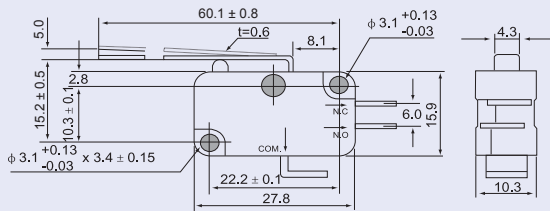


TRACON

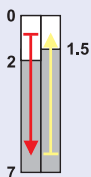
KW3-21	6,3x0,8 mm
KW3-25	4,8x0,8 mm



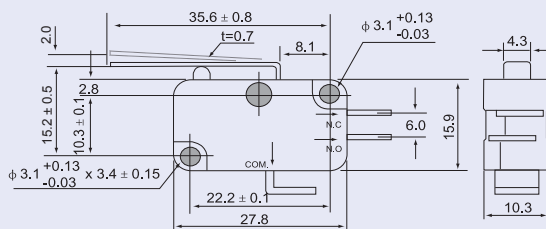
Cursa de acționare (mm)



Varianta cu tijă-arc



Cursa de acționare (mm)



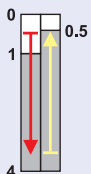
TRACON



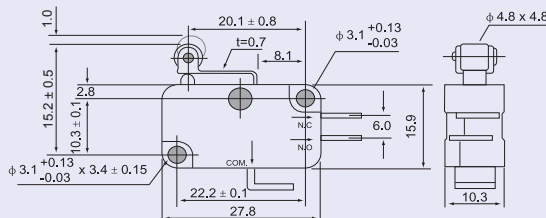
KW3-31 6,3×0,8 mm

KW3-35 4,8×0,8 mm

Varianta cu tijă-arc și rolă



Cursa de acționare (mm)



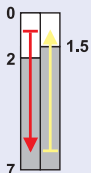
TRACON



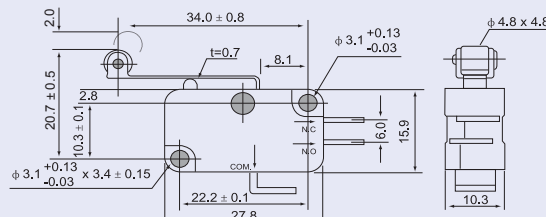
KW3-41 6,3×0,8 mm

KW3-45 4,8×0,8 mm

Varianta cu tijă-arc și rolă



Cursa de acționare (mm)



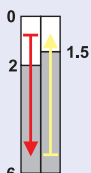
TRACON



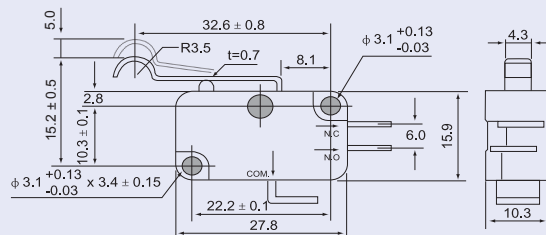
KW3-51 6,3×0,8 mm

KW3-55 4,8×0,8 mm

Varianta cu tijă-arc



Cursa de acționare (mm)



TRACON

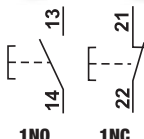


KW3-61 6,3×0,8 mm

KW3-65 4,8×0,8 mm

Butoane simple

I_e (AC 1, 230 V) 6 A	I_e (AC 15, 230 V) 3 A	I_e (DC 13, 230 V) 0,27 A	U_i 660 V	(mm^2) 0,5-2,5	$\times 10^6$	F_{on} max. 20 N	T_a -25..+40°C	$\varnothing 22$ mm
-----------------------------------	------------------------------------	---------------------------------------	-----------------------	---------------------	---------------	-----------------------	---------------------	---------------------



TRACON

IP 65

IP65

NC

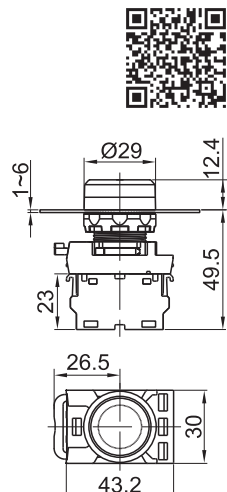
NO

NYG3-BK		1 x NO
NYG3-G		1 x NO
NYG3-W		1 x NO
NYG3-Y		1 x NO
NYG3-B		1 x NO
NYG3-R		1 x NC

page K/32

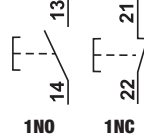
RELEVANT STANDARD EN 60947-1

RELEVANT STANDARD EN 60947-5-1



Comutatoare simple

I_e (AC 1, 230 V) 6 A	I_e (AC 15, 230 V) 3 A	I_e (DC 13, 230 V) 0,27 A	U_i 660 V	(mm^2) 0,5-2,5	$\times 10^6$	F_{on} max. 20 N	F_{off} max. 15 N	T_a -25..+40°C	$\varnothing 22$ mm
-----------------------------------	------------------------------------	---------------------------------------	-----------------------	---------------------	---------------	-----------------------	------------------------	---------------------	---------------------



TRACON

IP 65

IP65

NC

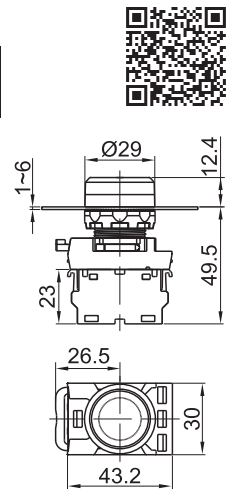
NO

NYK3-BK		1 x NO
NYK3-G		1 x NO
NYK3-W		1 x NO
NYK3-Y		1 x NO
NYK3-B		1 x NO
NYK3-R		1 x NC

page K/32

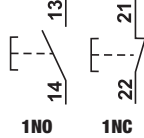
RELEVANT STANDARD EN 60947-1

RELEVANT STANDARD EN 60947-5-1



Butoane în relief

I_e (AC 1, 230 V) 6 A	I_e (AC 15, 230 V) 3 A	I_e (DC 13, 230 V) 0,27 A	U_i 660 V	(mm^2) 0,5-2,5	$\times 10^6$	F_{on} max. 20 N	T_a -25..+40°C	$\varnothing 22$ mm
-----------------------------------	------------------------------------	---------------------------------------	-----------------------	---------------------	---------------	-----------------------	---------------------	---------------------



TRACON

IP 42

IP42

NC

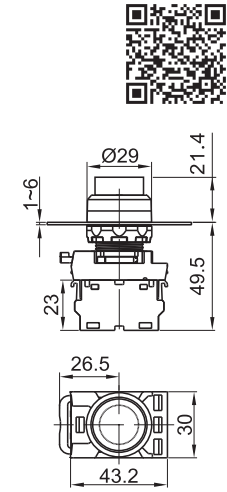
NO

NYG3-HBK		1 x NO
NYG3-HG		1 x NO
NYG3-HW		1 x NO
NYG3-HY		1 x NO
NYG3-HB		1 x NO
NYG3-HR		1 x NC

page K/32

RELEVANT STANDARD EN 60947-1

RELEVANT STANDARD EN 60947-5-1



Comutatoare în relief



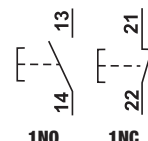
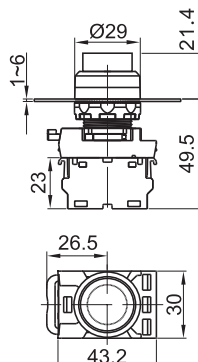
TRACON
IP 42

NYK3-HBK		1 × NO
NYK3-HG		1 × NO
NYK3-HW		1 × NO
NYK3-HY		1 × NO
NYK3-HB		1 × NO
NYK3-HR		1 × NC

page K/32

RELEVANT STANDARD EN 60947-1

RELEVANT STANDARD EN 60947-5-1



Butoane cu semnalizare luminoasă



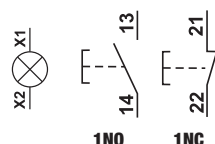
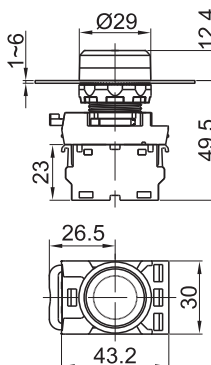
TRACON
IP 65

NYG3-LG		1 × NO
NYG3-LW		1 × NO
NYG3-LY		1 × NO
NYG3-LB		1 × NO
NYG3-LR		1 × NC
NYG3-HLG*		1 × NO
NYG3-HLW*		1 × NO
NYG3-HLY*		1 × NO
NYG3-HLB*		1 × NO
NYG3-HLR*		1 × NC

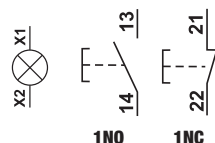
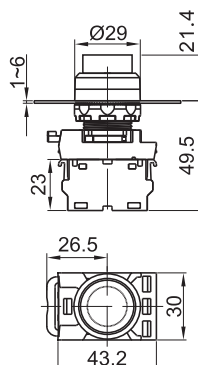
page K/32

RELEVANT STANDARD EN 60947-1

RELEVANT STANDARD EN 60947-5-1



* Tipuri în relief, IP 42



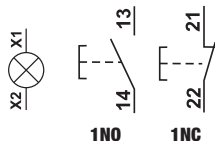
Comutatoare cu semnalizare luminoasă



I_e (AC 1, 230 V) 6 A	I_e (AC 15, 230 V) 3 A	I_e (DC 13, 230 V) 0,27 A	U_i 660 V	$[mm^2]$ 0,5-2,5	$\times 10^6$	F_{on} max. 20 N	F_{off} max. 15 N	T_a -25...+40°C	
-----------------------------------	------------------------------------	---------------------------------------	-----------------------	---------------------	---------------	-----------------------	------------------------	----------------------	--



NYK3-L..



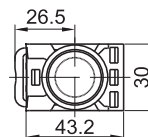
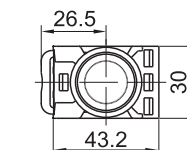
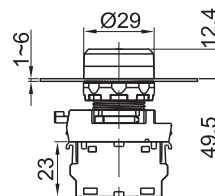
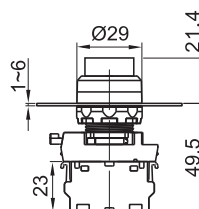
NYK3-H..

TRACON		IP 65	IP65	NC NO
NYK3-LG				1 x NO
NYK3-LW				1 x NO
NYK3-LY				1 x NO
NYK3-LB				1 x NO
NYK3-LR				1 x NC
NYK3-HLG*				1 x NO
NYK3-HLW*				1 x NO
NYK3-HLY*				1 x NO
NYK3-HLB*				1 x NO
NYK3-HLR*				1 x NC

* Tipuri în relief (IP42)

RELEVANT STANDARD
EN 60947-1

RELEVANT STANDARD
EN 60947-5-1



Butoane inscripționate

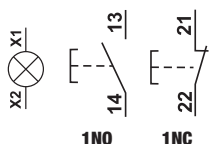
I_e (AC 1, 230 V) 6 A	I_e (AC 15, 230 V) 3 A	I_e (DC 13, 230 V) 0,27 A	U_i 660 V	$[mm^2]$ 0,5-2,5	$\times 10^6$	F_{on} max. 20 N	T_a -25...+40°C	
-----------------------------------	------------------------------------	---------------------------------------	-----------------------	---------------------	---------------	-----------------------	----------------------	--



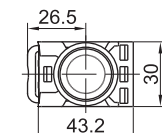
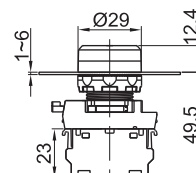
NYG3-P..



NYG3-P..L



TRACON		IP 65	IP65	NC NO
NYG3-P1				1 x NO
NYG3-P4				1 x NO
NYG3-P3				1 x NO
NYG3-P2				1 x NC
NYG3-P1L				1 x NO
NYG3-P4L				1 x NO
NYG3-P3L				1 x NO
NYG3-P2L				1 x NC



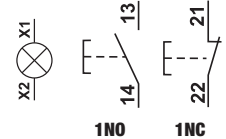
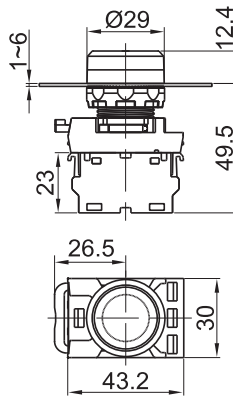
K/32

Comutatoare inscripționate



Ie (AC 1, 230 V) 6 A	Ie (AC 15, 230 V) 3 A	Ie (DC 13, 250 V) 0,27 A	Ui 660 V	mm² 0,5-2,5	F_{on} max. 20 N	F_{off} max. 15 N	Ta -25..+40°C	22 mm
---------------------------------------	--	---	---------------------------	---	---	--	--------------------------------	--------------

TRACON		IP 65	IP65	NC NO
NYK3-P1		I		1 x NO
NYK3-P4		→		1 x NO
NYK3-P3		←		1 x NO
NYK3-P2		0		1 x NC
NYK3-P1L		I		1 x NO
NYK3-P4L		→		1 x NO
NYK3-P3L		←		1 x NO
NYK3-P2L		0		1 x NC



RELEVANT STANDARD
EN 60947-1

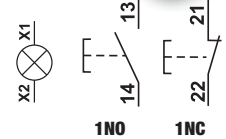
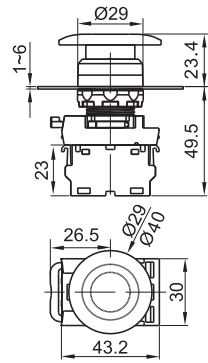
RELEVANT STANDARD
EN 60947-5-1

Butoane tip ciupercă



Ie (AC 1, 230 V) 6 A	Ie (AC 15, 230 V) 3 A	Ie (DC 13, 250 V) 0,27 A	Ui 660 V	mm² 0,5-2,5	F_{on} max. 20 N	Ta -25..+40°C	22 mm
---------------------------------------	--	---	---------------------------	---	---	--------------------------------	--------------

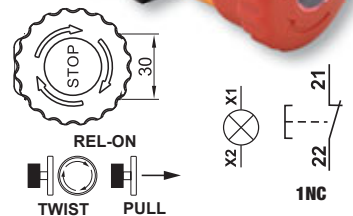
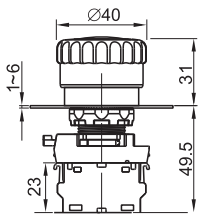
TRACON		IP 65	IP65	NC NO
NYG3-MBK				1 x NO
NYG3-MG				1 x NO
NYG3-MY				1 x NO
NYG3-MB				1 x NO
NYG3-MR				1 x NC
NYG3-MLG				1 x NO
NYG3-MLY				1 x NO
NYG3-MLB				1 x NO
NYG3-MLR				1 x NC



Buton de avarie, cu zăvorâre

Ie (AC 1, 230 V) 6 A	Ie (AC 15, 230 V) 3 A	Ie (DC 13, 250 V) 0,27 A	Ui 660 V	mm² 0,5-2,5	F_{on} max. 20 N	F_{off} max. 15 N	Ta -25..+40°C	22 mm
---------------------------------------	--	---	---------------------------	---	---	--	--------------------------------	--------------

TRACON		IP 65	IP65	NC NO
NYG3-ETR				1 x NC
NYG3-ETLR		STOP		1 x NC



RELEVANT STANDARD
EN 60947-1

RELEVANT STANDARD
EN 60947-5-1

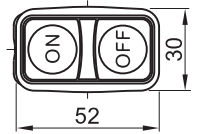
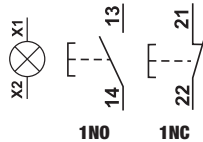
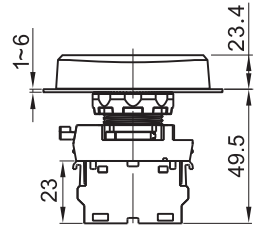
Butoane duble, pornit/oprit

I_e (AC 1, 230 V) 6 A	I_e (AC 15, 230 V) 3 A	I_e (DC 13, 230 V) 0,27 A	U_i 660 V	mm² 0,5-2,5	mm² x10 ⁶	F_{on} max. 20 N	T_a -25..+40°C	22 mm	Legendă pictograme	K/0
--	---	--	--------------------------------------	----------------------------------	---	------------------------------------	------------------------------------	--------------	---------------------------	------------



TRACON			IP 65	IP65	NC NO
NYG3-D					1xNO+1xNC
NYG3-D1	I	O			1xNO+1xNC
NYG3-D2	ON	OFF			1xNO+1xNC
NYG3-DL					1xNO+1xNC
NYG3-DL1	I	O			1xNO+1xNC
NYG3-DL2	ON	OFF			1xNO+1xNC

page K/32



RELEVANT STANDARD
EN 60947-1

RELEVANT STANDARD
EN 60947-5-1

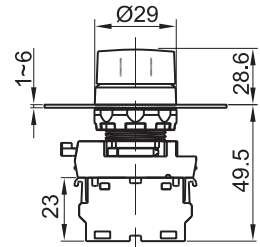
Comutatoare cu braț

I_e (AC 1, 230 V) 6 A	I_e (AC 15, 230 V) 3 A	I_e (DC 13, 230 V) 0,27 A	U_i 660 V	mm² 0,5-2,5	mm² 30x10 ⁴	T_a -25..+40°C	22 mm	QR Code
--	---	--	--------------------------------------	----------------------------------	---	------------------------------------	--------------	----------------



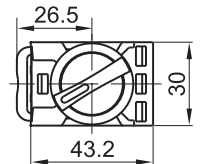
TRACON			IP 65	IP65	NC NO
Normale	NYK3-S21BK				1xNO+1xNC
	NYK3-S31BK				2 x NO
	NYK3-S24BK				1xNO+1xNC
Revenire cu arc	NYK3-S32BK				2 x NO
	NYK3-S33BK				2 x NO
	NYK3-S34BK				2 x NO

page K/32

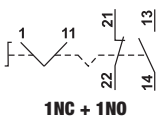


RELEVANT STANDARD
EN 60947-1

RELEVANT STANDARD
EN 60947-5-1

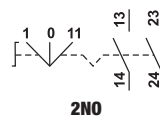


Normal, cu două poziții



1NC + 1NO

Normal, cu trei poziții



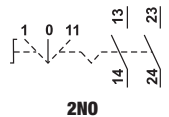
2NO

Două poziții, revenire cu arc



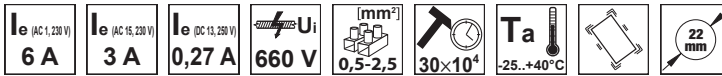
1NC + 1NO

Trei poziții, revenire cu arc



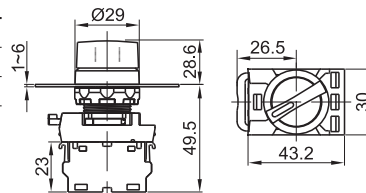
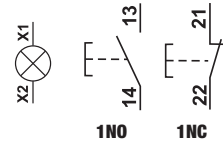
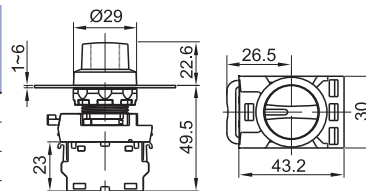
2NO

Comutatoare cu braț luminos

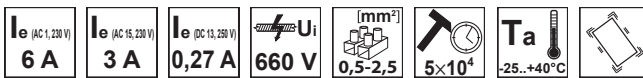


TRACON		IP 65	IP65	NC NO
NYK3-SL21R	∇			1×NO+1×NC
NYK3-SL21G	∇			1×NO+1×NC
NYK3-SL21Y	∇			1×NO+1×NC
NYK3-SL21B	∇			1×NO+1×NC
NYK3-SL24R	∇			1×NO+1×NC
NYK3-SL24G	∇			1×NO+1×NC
NYK3-SL24Y	∇			1×NO+1×NC
NYK3-SL24B	∇			1×NO+1×NC
NYK3-SL31R	∇			1×NO+1×NC
NYK3-SL31G	∇			1×NO+1×NC
NYK3-SL31Y	∇			1×NO+1×NC
NYK3-SL31B	∇			1×NO+1×NC
NYK3-SL34R	∇			1×NO+1×NC
NYK3-SL34G	∇			1×NO+1×NC
NYK3-SL34Y	∇			1×NO+1×NC
NYK3-SL34B	∇			1×NO+1×NC

page
K/32



Comutatoare cu cheie

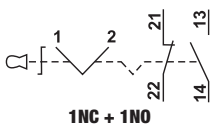


TRACON		IP 42	IP42	NC NO
Normale	NYK3-K21	∇		1×NO+1×NC
	NYK3-K31	∇		1×NO+1×NC
Revenire cu arc	NYK3-K24	∇		1×NO+1×NC
	NYK3-K34	∇		1×NO+1×NC

page
K/32

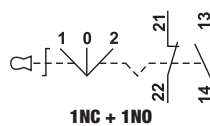


Normal, cu două poziții



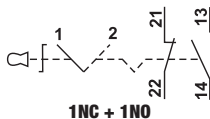
1NC + 1NO

Normal, cu trei poziții



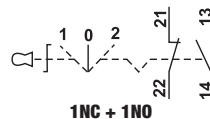
1NC + 1NO

Două poziții,
revenire cu arc

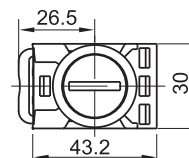
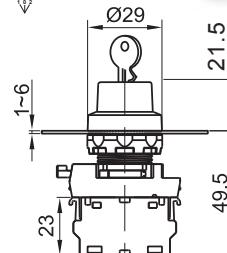


1NC + 1NO

Trei poziții,
revenire cu arc



1NC + 1NO



RELEVANT STANDARD
EN 60947-1
EN 60947-5-1

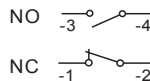
Elemente de contact

I_e (AC 1, 230 V) 6 A	I_e (AC 15, 230 V) 3 A	I_e (DC 15, 230 V) 0,27 A	U_i 660 V	(mm^2) 0,5-2,5	$\times 10^6$	Ta -25..+40°C	
-----------------------------------	------------------------------------	---------------------------------------	-----------------------	---------------------	---------------	------------------	--

Legendă pictograme **K/0**



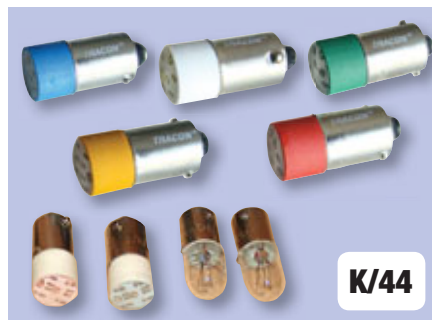
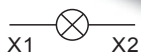
TRACON		
		NC NO
NYG3-CE1		1 x NO
NYG3-CE2		1 x NC



Soclu Ba9s pentru seria NYG3



TRACON		
U_i 660 V	(mm^2) 0,5-2,5	Ta -25..+40°C
NYG3-SOC		Ba9s



K/44

Carcase

Ta -25..+40°C		IP 65	$\% rH$ max. 90	\varnothing 22 mm
------------------	--	-----------------	--------------------	-------------------------------



TRACON			TRACON		
		L x W x H (mm)			L x W x H (mm)
NYGD-1GR		70 x 90 x 65	NYGD-4GR		70 x 207 x 65
NYGD-1YE		70 x 90 x 65	NYGD-4YE		70 x 207 x 65
NYGD-2GR		70 x 127 x 65	NYGD-5GR		70 x 247 x 65
NYGD-2YE		70 x 127 x 65	NYGD-5YE		70 x 247 x 65
NYGD-3GR		70 x 167 x 65	NYGD-6GR		70 x 287 x 65
NYGD-3YE		70 x 167 x 65	NYGD-6YE		70 x 287 x 65



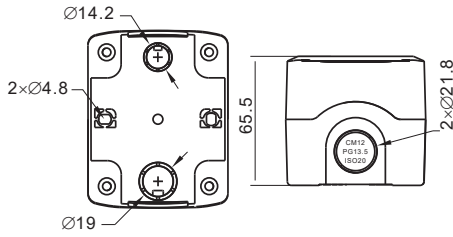
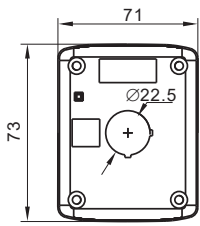
NYGD-1GR



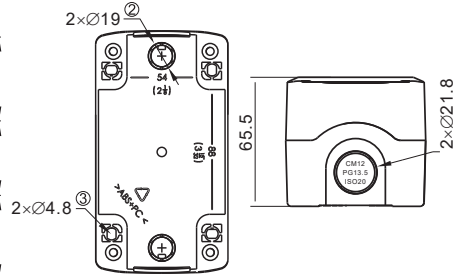
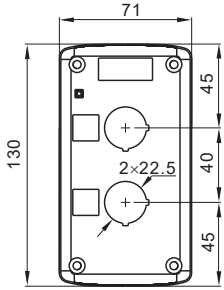
NYGD-2YE



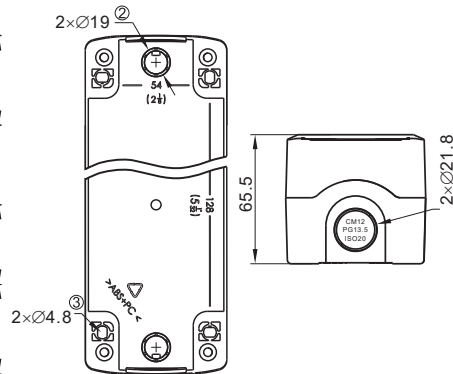
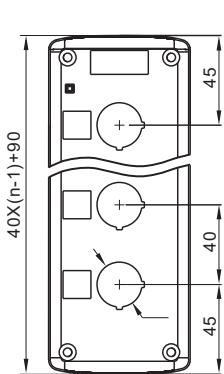
NYGD-3GR



NYGD-4YE




NYGD-5GR



NYGD-6YE



Accesorii

TRACON 	
NYG3-CAP	Capac de protecție, d=22mm; h=16mm; SILICA GEL
NYG3-CAPH	Capac de protecție, d=22mm; h=22mm; SILICA GEL
NYG3-LHB	Etichetă pentru inscripționare(se clipsează din spate), 25×10mm; ABS
NYG3-LHBH	Etichetă pentru inscripționare(se clipsează din spate), 25×17mm; ABS
NYG3-LHS	Etichetă pentru inscripționare(culisează din lateral), 25×10mm; ABS
NYG3-LHSH	Etichetă pentru inscripționare(culisează din lateral), 25×17mm; ABS
NYG3-BLP	Placă oarbă, d=22mm; ABS
NYGR25/22	Inel de adaptare, D=25/d=22mm; ABS
NYGR30/22	Inel de adaptare de la D=30 mm la d=22 mm (o pereche)
NYGR38/22	Inel de adaptare de la D=38 mm la d=22 mm (o pereche)
NYG3-SCAP	Capac care se poate plomba, D=30mm/d=22mm; h=20mm; POLICARBONAT
NYG3-LCAP	Capac care se poate zăvori, D=50mm/d=22mm; h=32mm; POLICARBONAT
NYG3-ES60	Plăcuță EMERGENCY STOP, d=60mm; h=2mm;ABS
NYG3-ES90	Plăcuță EMERGENCY STOP, d=90mm; h=2mm;ABS
NYG3-P30	Inel de protecție circular, d=48mm; h=27 mm; ABS
NYG3-PH30	Inel de protecție dințat, d=30; h=28mm; ABS
NYG3-P60	Inel de protecție circular, d=60mm; ABS
NYGD-FR	Inel de protecție circular, d=60mm; h=30 mm; ABS
NYG3-ES60H	Plăcuță EMERGENCY STOP, d=60mm, h=8mm, ABS
NYG3-PH65	Inel de protecție, curbat, W=65mm, H=80mm, D=38mm, ABS



NYG3-CAP



NYG3-LH



NYG3-BLP



NYGR25/22



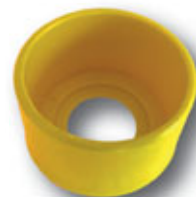
NYG3-SCAP



NYG3-LCAP



NYG3-ES..



NYP3-P..



NYG3-PH30



NYGD-FR



NYG3-PH65



NYGR3..

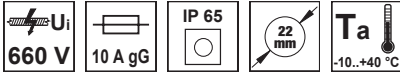


CITIȚI CODUL !

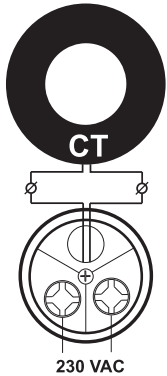
- Vezi noutățile noastre
- Fiți informat

**Gama de produse se dezvoltă continuu și rapid!
 Catalogul nostru reflectă situația din Aprilie 2019.
 Pentru informații actualizate vizitați pagina
 noastră de internet!**

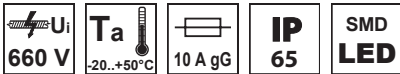
Indicatoare de tensiune, curent, sonerii



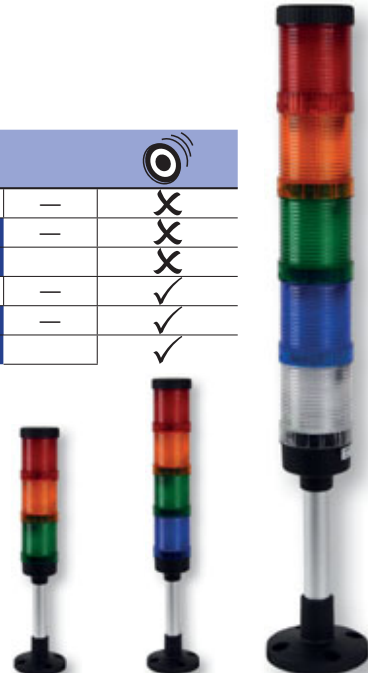
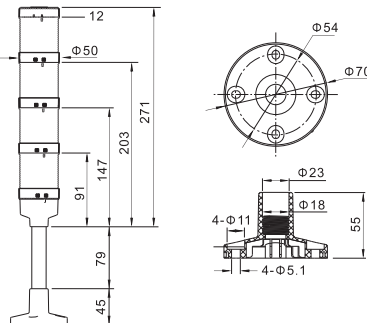
TRACON			U _m	I _m		
NYG3-VR		LED	24-500 V AC	-	-	
NYG3-VG		LED	24-500 V AC	-	-	
NYG3-VY		LED	24-500 V AC	-	-	
NYG3-AR		LED	-	1-100 A	-	
NYG3-AG		LED	-	1-100 A	-	
NYG3-AY		LED	-	1-100 A	-	
NYG3-BFR230	-	LED, blink	230 V AC	-	✓	
NYG3-BFR24	-	LED, blink	24 V AC/DC	-	✓	



Coloane de semnalizare luminoasă



TRACON	U _m		
NYG3-50RYG	AC 230 V		X
NYG3-50RYGB	AC 230 V		X
NYG3-50RYGBW	AC 230 V		X
NYG3-50RYGM	AC/DC 24 V		✓
NYG3-50RYGBM	AC/DC 24 V		✓
NYG3-50RYGBWM	AC/DC 24 V		✓



NYG3-50RYG NYG3-50RYGB NYG3-50RYGBW

Lămpi de semnalizare cu LED, tip LJL...



K/0

Dimensiune Ø 16 mm

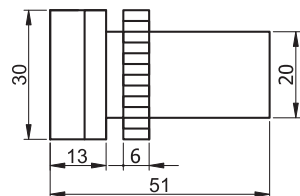
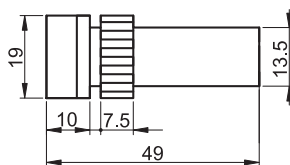
TRACON		U _m
LJL16-RA		12 V AC/DC
LJL16-RC		24 V AC/DC
LJL16-RD		48 V AC/DC
LJL16-RE		230 V AC/DC
LJL16-RF		400 V AC
LJL16-GA		12 V AC/DC
LJL16-GC		24 V AC/DC
LJL16-GD		48 V AC/DC
LJL16-GE		230 V AC/DC
LJL16-GF		400 V AC
LJL16-YA		12 V AC/DC
LJL16-YC		24 V AC/DC
LJL16-YD		48 V AC/DC
LJL16-YE		230 V AC/DC
LJL16-YF		400 V AC
LJL16-WA		12 V AC/DC
LJL16-WC		24 V AC/DC
LJL16-WD		48 V AC/DC
LJL16-WE		230 V AC/DC
LJL16-WF		400 V AC
LJL16-BA		12 V AC/DC
LJL16-BC		24 V AC/DC
LJL16-BD		48 V AC/DC
LJL16-BE		230 V AC/DC
LJL16-BF		400 V AC

Dimensiune Ø 22 mm

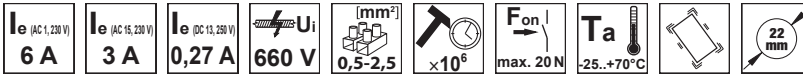
TRACON			U _m	
IP 65				
LJL22-RA	LJL22-RAT		12 V AC/DC	
LJL22-RC	LJL22-RCT		24 V AC/DC	
LJL22-RD	LJL22-RDT		48 V AC/DC	
LJL22-RE	LJL22-RET		230 V AC/DC	
LJL22-RF	LJL22-RFT		400 V AC	
LJL22-GA	LJL22-GAT		12 V AC/DC	
LJL22-GC	LJL22-GCT		24 V AC/DC	
LJL22-GD	LJL22-GDT		48 V AC/DC	
LJL22-GE	LJL22-GET		230 V AC/DC	
LJL22-GF	LJL22-GFT		400 V AC	
LJL22-YA	LJL22-YAT		12 V AC/DC	
LJL22-YC	LJL22-YCT		24 V AC/DC	
LJL22-YD	LJL22-YDT		48 V AC/DC	
LJL22-YE	LJL22-YET		230 V AC/DC	
LJL22-YF	LJL22-YFT		400 V AC	
LJL22-WA	LJL22-WAT		12 V AC/DC	
LJL22-WC	LJL22-WCT		24 V AC/DC	
LJL22-WD	LJL22-WDT		48 V AC/DC	
LJL22-WE	LJL22-WET		230 V AC/DC	
LJL22-WF	LJL22-WFT		400 V AC	
LJL22-BA	LJL22-BAT		12 V AC/DC	
LJL22-BC	LJL22-BCT		24 V AC/DC	
LJL22-BD	LJL22-BDT		48 V AC/DC	
LJL22-BE	LJL22-BET		230 V AC/DC	
LJL22-BF	LJL22-BFT		400 V AC	

NYGD-1GR

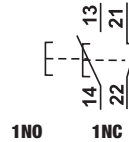
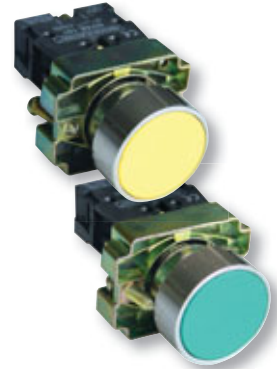
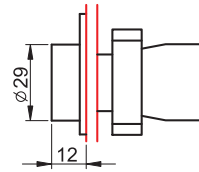
page
K/32



Butoane simple



TRACON		IP 42	+	IP42	IP65	NC	NO
NYGBA21	NYGBA21T				NYGD-1GR	1 × NO	
NYGBA31Z	NYGBA31ZT					1 × NO	
NYGBA51S	NYGBA51ST				page	1 × NO	
NYGBA61K	NYGBA61KT				K/32	1 × NO	
NYGBA42P	NYGBA42PT					1 × NC	

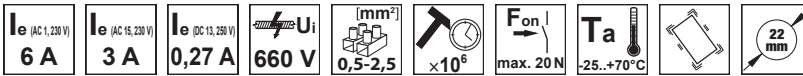


1NO 1NC

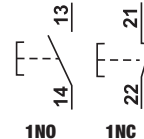
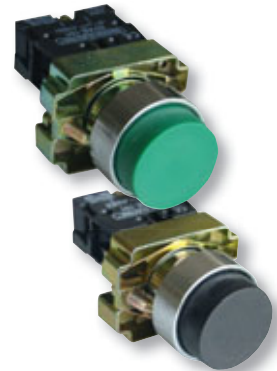
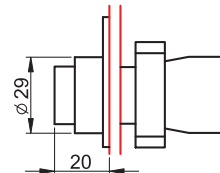
RELEVANT STANDARD
EN 60947-1

RELEVANT STANDARD
EN 60947-5-1

Butoane în relief



TRACON		IP 42	+	IP42	IP65	NC	NO
NYGBL21	NYGBL21T				NYGD-1GR	1 × NO	
NYGBL31Z	NYGBL31ZT					1 × NO	
NYGBL51S	NYGBL51ST				page	1 × NO	
NYGBL61K	NYGBL61KT				K/32	1 × NO	
NYGBL42P	NYGBL42PT					1 × NC	

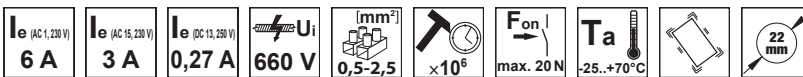


1NO 1NC

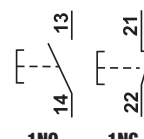
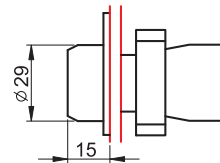
RELEVANT STANDARD
EN 60947-1

RELEVANT STANDARD
EN 60947-5-1

Butoane simple cu protecție de cauciuc



TRACON		IP 55	+	IP42	IP65	NC	NO
NYGBP21	NYGBP21T				NYGD-1GR	1 × NO	
NYGBP31Z	NYGBP31ZT					1 × NO	
NYGBP51S	NYGBP51ST				page	1 × NO	
NYGBP61K	NYGBP61KT				K/32	1 × NO	
NYGBP42P	NYGBP42PT					1 × NC	



1NO 1NC

RELEVANT STANDARD
EN 60947-1

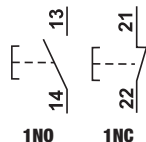
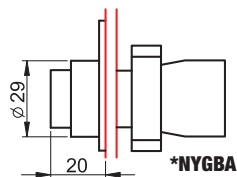
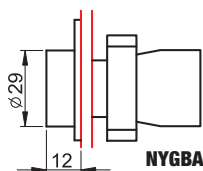
RELEVANT STANDARD
EN 60947-5-1

Butoane inscripționate

I_e (AC 1, 230 V) 6 A	I_e (AC 15, 230 V) 3 A	I_e (DC 13, 200 V) 0,27 A	U_i 660 V	[mm²] 0,5-2,5	[x10⁶] x10 ⁶	F_{on} max. 20 N	T_a -25..+70°C	22 mm	Legendă pictograme	K/O
--	---	--	--------------------------------------	------------------------------------	--	------------------------------------	------------------------------------	--------------	---------------------------	------------

TRACON		IP 42	IP 65	NYGD-1GR	1 x NO
NYGBA3351	NYGBA3351T	→			1 x NO
NYGBA3341	NYGBA3341T	→			1 x NO
NYGBA3311Z	NYGBA3311ZT				1 x NO
NYGBA4222P	NYGBA4222PT	0		page	1 x NC
NYGBA4322P*	NYGBA4322PT*	0		K/32	1 x NC

* Tipuri în relief



Butoane simple cu semnalizare luminoasă (Ba9s)

TRACON		IP 42	IP 65	NYGD-1GR	1 x NO	U _m	NYGI230*
	NYGBW33Z	NYGBW33ZT			1 x NO	max. 400 V	NYGI230*
	NYGBW33S	NYGBW33ST		page	1 x NO	max. 400 V	NYGI230*
	NYGBW33K	NYGBW33KT		K/32	1 x NO	max. 400 V	NYGI230*
	NYGBW33P	NYGBW33PT			1 x NC	max. 400 V	NYGI230*
	NYGBW3371Z	NYGBW3371ZT		NYGD-1GR	1 x NO	230-240 V	NYGI130**
	NYGBW3571S	NYGBW3571ST		page	1 x NO	230-240 V	NYGI130**
	NYGBW3471P	NYGBW3471PT		K/32	1 x NC	230-240 V	NYGI130**
	NYGBW3341Z	-			1 x NO	230-240 V	NYGI6**
	NYGBW3541S	-			1 x NO	230-240 V	NYGI6**
	NYGBW3441P	-			1 x NC	230-240 V	NYGI6**
	NYGBW3351Z	-			1 x NO	400 V	NYGI6**
	NYGBW3551S	-			1 x NO	400 V	NYGI6**
	NYGBW3451P	-			1 x NC	400 V	NYGI6**

* Becul se alege în funcție de tensiunea de lucru.

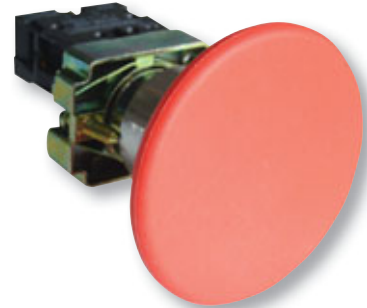
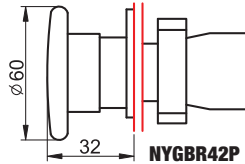
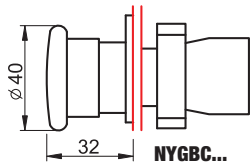
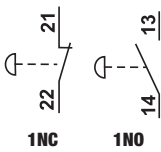
** Tensiunea de lucru a becurilor din lămpile de semnalizare cu rezistență este de 130 V , iar a lămpilor cu transformator este de 6V

 1NO 1NC	 Normale	 Cu rezistență	 Cu transformator
 19 61	 19 66	 19 82	

Butoane tip ciupercă

I_e (AC 1, 230 V) 6 A	I_e (AC 15, 230 V) 3 A	I_e (DC 13, 230 V) 0,27 A	U_i 660 V	mm² 0,5-2,5	×10⁶	F_{on} max. 20 N	T_a -25...+70°C	22 mm	Legendă pictograme	K/O
--	---	--	--------------------------------------	---	------------------------	---	--	--------------	---------------------------	------------

TRACON			IP65	NC NO	40 mm
NYGBC21	NYGBC21T	-		NYGD-1GR	1 × NO
NYGBC31Z	NYGBC31ZT	-		page K/32	1 × NO
NYGBC51S	NYGBC51ST	-		1 × NO	
NYGBC61K	NYGBC61KT	-		1 × NO	
NYGBC42P	NYGBC42PT	NYGBC42PTS		NYGD-1YE	1 × NC
NYGBR42P	NYGBR42PT	NYGBR42PTS	page K/32	1 × NC	60 mm



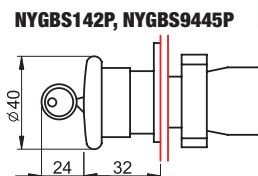
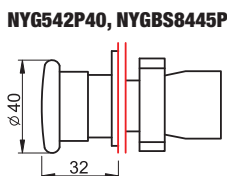
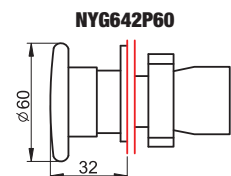
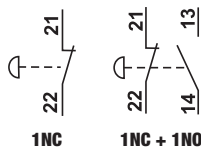
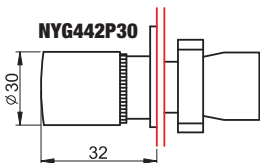
RELEVANT STANDARD
EN 60947-1

RELEVANT STANDARD
EN 60947-5-1

Butoane de avarie tip ciupercă, cu cheie

I_e (AC 1, 230 V) 6 A	I_e (AC 15, 230 V) 3 A	I_e (DC 13, 230 V) 0,27 A	U_i 660 V	mm² 0,5-2,5	×10⁶	F_{on} max. 20 N	F_{off} max. 15 N	T_a -25...+70°C	Legendă pictograme	K/O
--	---	--	--------------------------------------	---	------------------------	---	--	--	---------------------------	------------

TRACON			IP65	NC NO	30 mm
NYG442P30	NYG442P30T	NYG442P30TS		NYGD-1GR	1 × NC 30 mm
NYG542P40	NYG542P40T	NYG542P40TS		NYGD-1YE	1 × NC 40 mm
NYG642P60	NYG642P60T	NYG642P60TS		page K/32	1 × NC+1 × NO 40 mm
NYGBS8445P	NYGBS8445PT	NYGBS8445PTS		1 × NC 40 mm	
NYGBS142P	NYGBS142PT	NYGBS142PTS		1 × NC+1 × NO 40 mm	
NYGBS9445P	NYGBS9445PT	NYGBS9445PTS		1 × NC+1 × NO 40 mm	

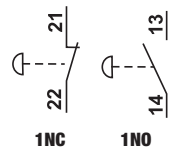
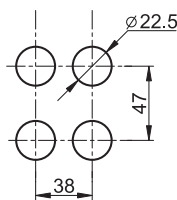
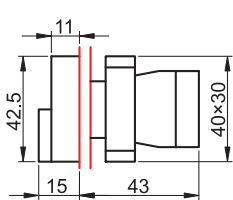


Butoane duble, pornit/oprit

I_e (AC 1, 230 V) 6 A	I_e (AC 15, 230 V) 3 A	I_e (DC 13, 230 V) 0,27 A	U_i 660 V	mm^2 0,5-2,5	$\times 10^6$	F_{on} max. 20 N	T_a -25..+70°C	
-----------------------------------	------------------------------------	---------------------------------------	-----------------------	-------------------	---------------	-----------------------	---------------------	--

Legendă pictograme **K/0**

TRACON				
NYKK8325	NYKK8325T			NYGD-1GR
NYKK8425	NYKK8425T	I	O	page K/32
				1 × NC+1 × NO
				1 × NC+1 × NO



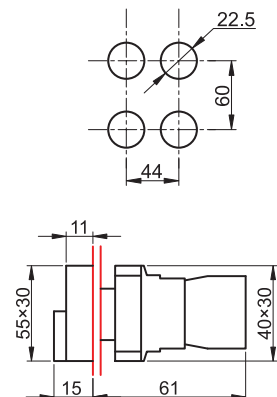
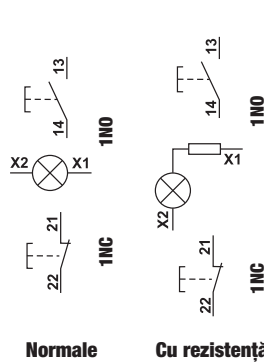
Butoane duble, pornit/oprit, cu semnalizare luminoasă (Ba9s)

I_e (AC 1, 230 V) 6 A	I_e (AC 15, 230 V) 3 A	I_e (DC 13, 230 V) 0,27 A	U_i 660 V	mm^2 0,5-2,5	$\times 10^6$	F_{on} max. 20 N	T_a -25..+70°C	
-----------------------------------	------------------------------------	---------------------------------------	-----------------------	-------------------	---------------	-----------------------	---------------------	--

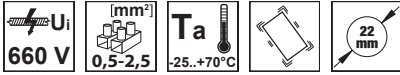
TRACON				U_m		
$X_2 \otimes X_1$	NYKK8365	I	O	1 × NC+1 × NO	max. 400 V	NYGI230*
	NYKK8465	I	O	1 × NC+1 × NO	max. 400 V	NYGI230*
$X_2 \otimes X_1$	NYKK8375	I		1 × NC+1 × NO	240 V	NYGI130**
$X_2 \otimes X_1$	NYKK8475	I	O*	1 × NC+1 × NO	240 V	NYGI130**

* Becul se alege în funcție de tensiunea de lucru.

** Tensiunea de lucru a becurilor din lămpile de semnalizare cu rezistență este de 130 V.



Lămpi de semnalizare (Ba9s)



TRACON		Um	IP65	
	NYGBV61	NYGBV61T		max. 400 V
	NYGBV64P	NYGBV64PT		max. 400 V
	NYGBV63Z	NYGBV63ZT		max. 400 V
	NYGBV65S	NYGBV65ST		max. 400 V
	NYGBV66K	NYGBV66KT		max. 400 V
	NYGBV73Z	NYGBV73ZT		230-240 V
	NYGBV74P	NYGBV74PT		230-240 V
	NYGBV75S	NYGBV75ST		230-240 V
	NYGBV43Z	NYGBV43ZT		230-240 V
	NYGBV44P	NYGBV44PT		230-240 V
	NYGBV45S	NYGBV45ST		230-240 V
	NYGBV53Z	NYGBV53ZT		400 V
	NYGBV54P	NYGBV54PT		400 V
	NYGBV55S	NYGBV55ST		400 V

NYGD-1GR

page
K/32

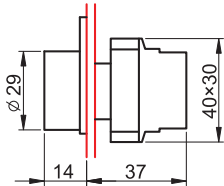
NYGD-1GR

page
K/32

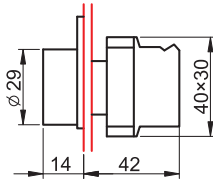
Lămpile de semnalizare se livrează fără bec.

Becul se alege în funcție de tensiunea de lucru.

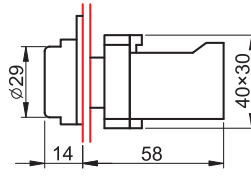
* Tensiunea de lucru a becurilor din lămpile de semnalizare cu rezistență este de 130 V , iar a lămpilor cu transformator este de 6V



Normale



Cu rezistență



Cu transformator



TÜV MEEI TEST DOCUMENTATION
V-15180

RELEVANT STANDARD
EN 62094

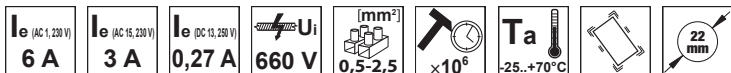


Contactoare

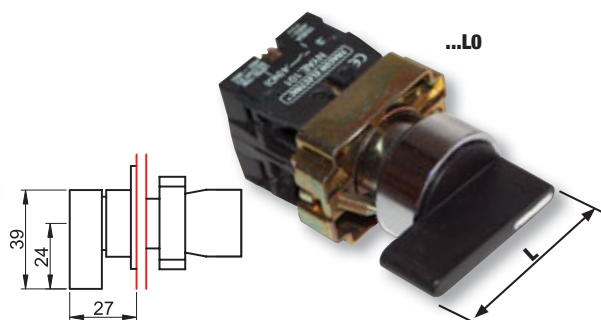
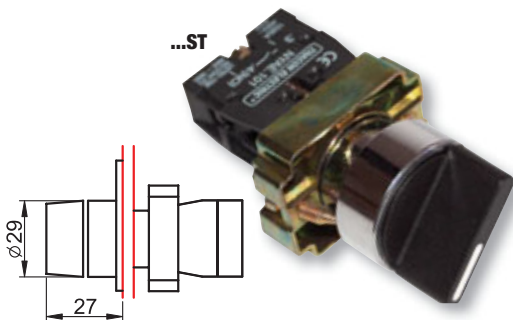


I/32

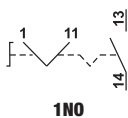
Comutatoare cu braț



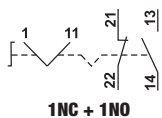
TRACON		IP 42	+	IP 65	NC	NO	L
Normale	NYBD21KST	NYBD21KSTT	$\sqrt{2}$	NYGD-1GR	1 × NO	29 mm	
	NYBJ21KLO	NYBJ21KLOT	$\sqrt{2}$		1 × NO	39 mm	
	KBD25ST	KBD25STT	$\sqrt{2}$		1 × NC+1 × NO	29 mm	
	KBJ25LO	KBJ25LOT	$\sqrt{2}$		1 × NC+1 × NO	39 mm	
	NYBD33KST	NYBD33KSTT	$\sqrt{2}$		2 × NO	29 mm	
NYBJ33KLO	NYBJ33KLOT	$\sqrt{2}$	2 × NO		39 mm		
Revenire cu arc	NYBD41KST	NYBD41KSTT	$\sqrt{2}$		1 × NO	29 mm	
	NYBJ41KLO	NYBJ41KLOT	$\sqrt{2}$		1 × NO	39 mm	
	NYBD45KST	NYBD45KSTT	$\sqrt{2}$		1 × NC+1 × NO	29 mm	
	NYBJ45KLO	NYBJ45KLOT	$\sqrt{2}$		1 × NC+1 × NO	39 mm	
	NYBD53KST	NYBD53KSTT	$\sqrt{2}$	2 × NO	29 mm		
NYBJ53KLO	NYBJ53KLOT	$\sqrt{2}$	2 × NO	39 mm			



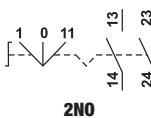
Normal, cu două poziții



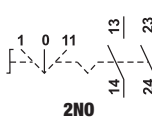
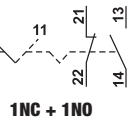
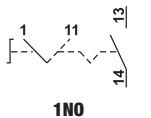
Normal, cu trei poziții



Două poziții, revenire cu arc



Trei poziții, revenire cu arc



Comutatoare cu braț luminos (Ba9s)



I_e (AC 1, 230 V) 6 A	I_e (AC 15, 230 V) 3 A	I_e (DC 13, 230 V) 0,27 A	U_i 660 V	$[mm^2]$ 0,5-2,5	$\times 10^6$	T_a -25...+70°C	U_m max. 400 V	\varnothing 22 mm
-----------------------------------	------------------------------------	---------------------------------------	-----------------------	----------------------------	---------------	-----------------------------	----------------------------	-------------------------------

TRACON		IP 42	IP 65	NC	NO
Normale	NYGBK2365Z	NYGBK2365ZT	∇^2	1 × NC+1 × NO	NYGLZ *
	NYGBK2565S	NYGBK2565ST	∇^2	1 × NC+1 × NO	NYGLS *
	NYGBK2665K	NYGBK2665KT	∇^2	1 × NC+1 × NO	NYGLK *
	NYGBK2465P	NYGBK2465PT	∇^2	1 × NC+1 × NO	NYGLP *
	NYGBK3365Z	NYGBK3365ZT	$\nabla^{0,2}$	1 × NC+1 × NO	NYGLZ *
	NYGBK3565S	NYGBK3565ST	$\nabla^{0,2}$	1 × NC+1 × NO	NYGLS *
	NYGBK3665K	NYGBK3665KT	$\nabla^{0,2}$	1 × NC+1 × NO	NYGLK *
	NYGBK3465P	NYGBK3465PT	$\nabla^{0,2}$	1 × NC+1 × NO	NYGLP *

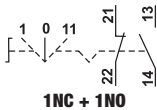


* Comutatoarele cu braț luminos se livrează fără bec.

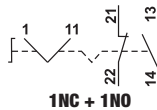
RELEVANT STANDARD
EN 60947-1

RELEVANT STANDARD
EN 60947-5-1

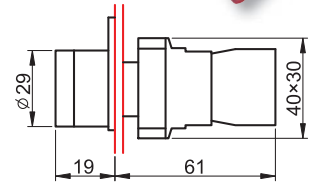
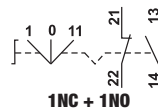
Trei poziții,
revenire cu arc



Normal, cu două poziții



Normal, cu trei poziții

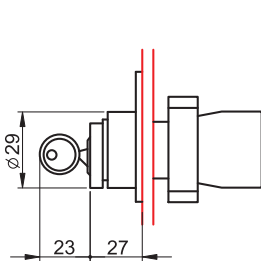


Comutatoare cu cheie

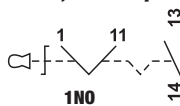


I_e (AC 1, 230 V) 6 A	I_e (AC 15, 230 V) 3 A	I_e (DC 13, 230 V) 0,27 A	U_i 660 V	$[mm^2]$ 0,5-2,5	$\times 10^6$	T_a -25...+70°C	\varnothing 22 mm
-----------------------------------	------------------------------------	---------------------------------------	-----------------------	----------------------------	---------------	-----------------------------	-------------------------------

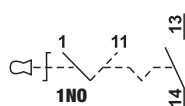
TRACON		IP 42	IP 65	NC	NO
Normale	NYBG21KK	NYBG21KKT	∇^2	1 × NO	∇^2
	NYBG41KK	NYBG41KKT	∇^2	1 × NO	∇^2
	NYBG25KK	NYBG25KKT	∇^2	1 × NC+1 × NO	∇^2
	NYBG53KK	NYBG53KKT	∇^2	2 × NO	∇^2
Revenire cu arc	NYBG61KK	NYBG61KKT	∇^2	1 × NO	∇^2
	NYBG65KK	NYBG65KKT	∇^2	1 × NC+1 × NO	∇^2
	NYBG73KK	NYBG73KKT	$\nabla^{0,2}$	2 × NO	$\nabla^{0,2}$



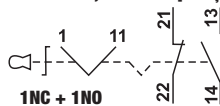
Normal, cu două poziții



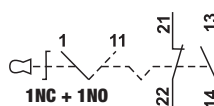
Două poziții,
revenire cu arc



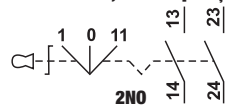
Normal, cu două poziții



Două poziții,
revenire cu arc



Normal, cu trei poziții



Trei poziții,
revenire cu arc



Becuri normale de semnalizare



TRACON	U _m		
NYGI6	6 V AC/DC	1,2 W	Ba9s
NYGI12	12 V AC/DC	2 W	Ba9s
NYGI24	24 V AC/DC	2 W	Ba9s
NYGI48	48 V AC/DC	2 W	Ba9s
NYGI130	130 V AC/DC	2,6 W	Ba9s
NYGI230	230 V AC	glimm	Ba9s

Surse LED de semnalizare



TRACON	U _m		
NYGL-AC400B	400 V AC		Ba9s
NYGL-AC400G	400 V AC		Ba9s
NYGL-AC400R	400 V AC		Ba9s
NYGL-AC400W	400 V AC		Ba9s
NYGL-AC400Y	400 V AC		Ba9s
NYGL-ACDC230B	230 V AC/DC		Ba9s
NYGL-ACDC230G	230 V AC/DC		Ba9s
NYGL-ACDC230R	230 V AC/DC		Ba9s
NYGL-ACDC230W	230 V AC/DC		Ba9s
NYGL-ACDC230Y	230 V AC/DC		Ba9s
NYGL-ACDC24B	24 V AC/DC		Ba9s
NYGL-ACDC24G	24 V AC/DC		Ba9s
NYGL-ACDC24R	24 V AC/DC		Ba9s
NYGL-ACDC24W	24 V AC/DC		Ba9s
NYGL-ACDC24Y	24 V AC/DC		Ba9s

Elemente de contact



TRACON		
NYAE101	1 × NO	
NYAE102	1 × NC	

3 — 4 (NO)

1 — 2 (NC)

NYAE101

NYAE102

În caz de necesitate se pot monta pe ansamblul de bază, un număr de maxim 4 elemente de contact.

Inele de adaptare



TRACON	
NYGR25/22	Inel de adaptare, D=25/d=22mm; ABS (1 buc)
NYGR30/22	Inel de adaptare de la D=30 mm la d=22 mm (o pereche)
NYGR38/22	Inel de adaptare de la D=38 mm la d=22 mm (o pereche)

În cazul înlocuirii elementelor de comandă și semnalizare a tablourilor de comandă executate în trecut, care se montau în găuri cu diametrul de 38 mm, se folosesc inele de adaptare pentru fixare pe placa de montaj.



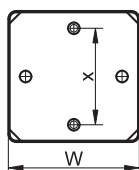
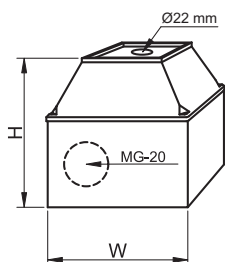
CITIȚI CODUL !

- Vezi noutățile noastre
- Fiți informat

Gama de produse se dezvoltă continuu și rapid!
Catalogul nostru reflectă situația din Aprilie 2019.
Pentru informații actualizate vizitați pagina noastră de internet!

Carcase

TRACON		W (mm)	H (mm)	x (mm)		IP..
TK/T1+F2/		68	64	44	2 x MG-20	IP 44
TK/T2+F2/		68	80	44	2 x MG-20	IP 44
TK/T1+F2S/		68	64	44	2 x MG-20	IP 44
TK/T2+F2S/		68	80	44	2 x MG-20	IP 44



TÜV MEEI TEST DOCUMENTATION
V-15180

RELEVANT STANDARD
EN 60529



IOS
ANDROID



- Magazin virtual și catalog
- Promoții și promoții zilnice
- Căutare magazin, hartă
- Cititor de coduri QR și coduri de bare
- Informații actualizate







Înterupătoare de siguranță cu releu

Înterupătoarele tip SSTM sunt adecvate pentru comutare în regim de siguranță a diverselor mașini-unelte respectiv echipamente electrice. În cazul unei căderi de tensiune întrerupătorul va deconecta automat de la rețea echipamentul conectat.

Repornirea este posibilă numai prin apăsarea din nou a butonului verde "I", prevenind prin aceasta pornirea accidentală, nedorită a echipamentului.

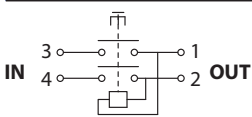
Atenție! Aparatul se conectează conform schemei electrice existente pe aparat !



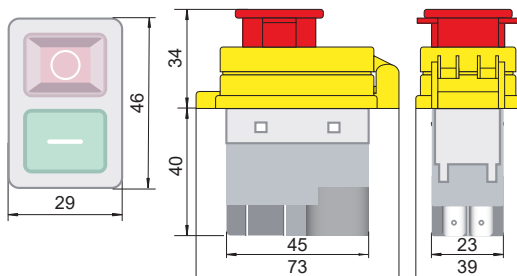
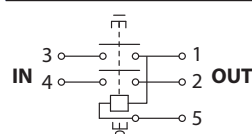
SSTM-01..



TRACON SSTM-01



TRACON SSTM-015

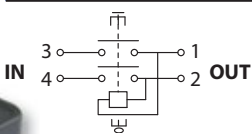


230 V AC | **I_e (AC 3, 230 V) 12 A** | 6,3x0,8 mm | ×10⁴ | **1~**

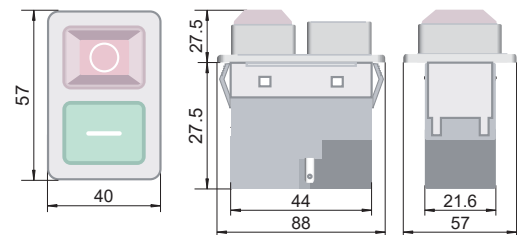
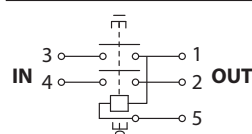
SSTM-02..



TRACON SSTM-02



TRACON SSTM-025

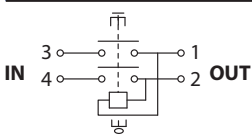


230 V AC | **I_e (AC 3, 230 V) 12 A** | 6,3x0,8 mm | 5×10⁴ | **1~**

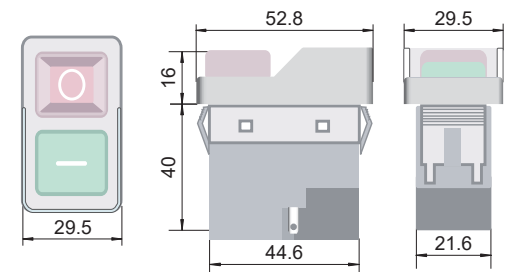
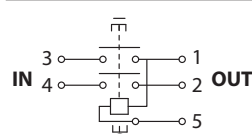
SSTM-03..



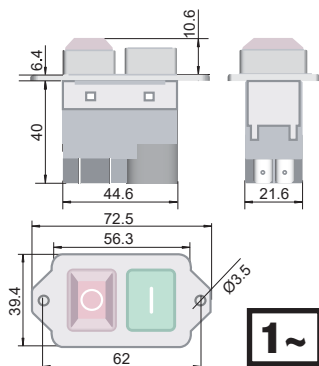
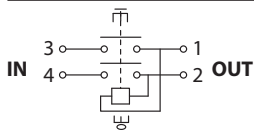
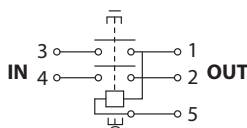
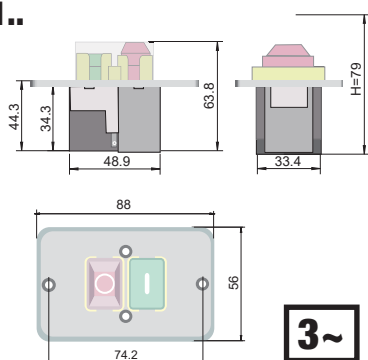
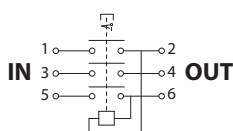
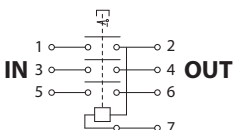
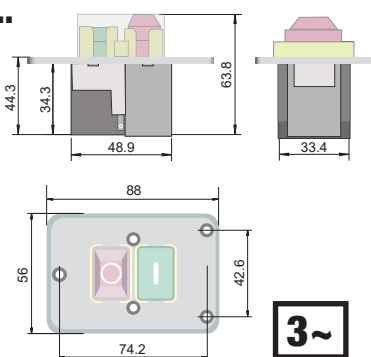
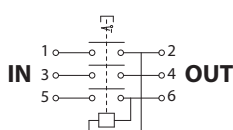
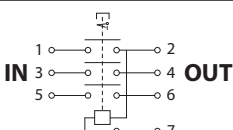
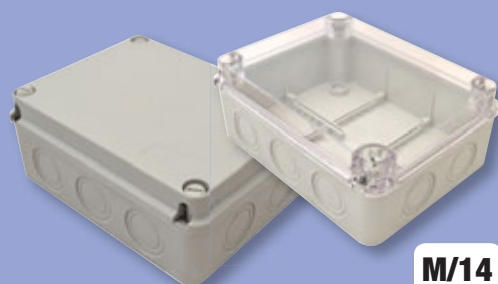
TRACON SSTM-03



TRACON SSTM-035



230 V AC | **I_e (AC 3, 230 V) 12 A** | 6,3x0,8 mm | 5×10⁴ | **1~**

SSTM-04..**230
V AC****I_e (AC 3, 230 V)
12 A****6,3x0,8 mm****5x10⁴****TRACON SSTM-04****TRACON SSTM-045****SSTM-31..****400
V AC****I_e (AC 3, 400 V)
8 A****6,3x0,8 mm****x10⁴****TRACON SSTM-316****TRACON SSTM-317****SSTM-32..****400
V AC****I_e (AC 3, 400 V)
8 A****6,3x0,8 mm****5x10⁴****TRACON SSTM-326****TRACON SSTM-327****Doze electronice****M/14****SSTM-BOX**

Se utilizează pentru următoarele variante:

SSTM-02, -025**SSTM-316, -317****SSTM-326, -327****113x77x60 mm****IP
42****TRACON SSTM-BOX**

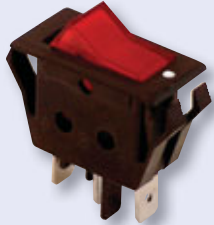
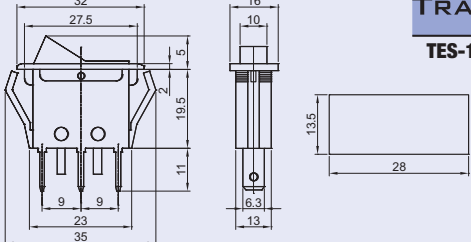
Înterupătoare pentru aparate


U_m max. 250 V	I_e (AC 1, 230 V) 16 A	I_e (AC 15, 230 V) 6 A	I_e (DC 13, 250 V) 0,27 A	U_i 660 V	U_{imp} 6 kV	[mm²] 0,5-2,5	[h] 5×10 ⁴	[h] 15.000	% rH max. 95	T_a -20...+55°C	IP 42	10 A gG
------------------------------------	---	---	--	--------------------------------------	---------------------------------------	------------------------------------	---------------------------------	----------------------	------------------------	-------------------------------------	--------------	----------------

Se pot monta în sisteme de comutare sau în diferite aparate electrocasnice sau electrice. Utilizarea comutatoarelor cu semnalizare luminoasă este recomandată când este important să fie semnalată starea de funcționare a aparatului.

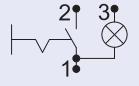
Se fixează prin sistem „click”. Conexiunile se realizează cu papuci 4,8 × 0,8 mm respectiv 6,3 × 0,8 mm (CSH5, CSH6)

Înterupător Pornit - Oprit


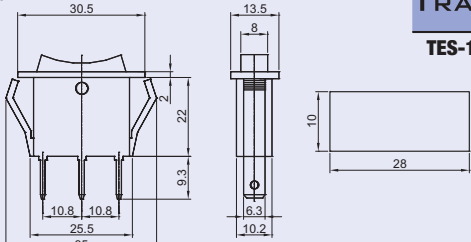




TRACON 

TES-11 6,3 × 0,8 mm **3**

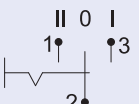


Selector oprit (0) în poziție centrală


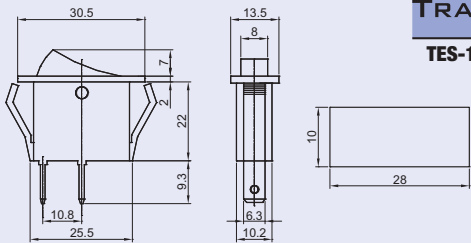




TRACON 

TES-12 6,3 × 0,8 mm **I-0-II** -

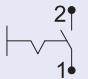


Înterupător Pornit - Oprit


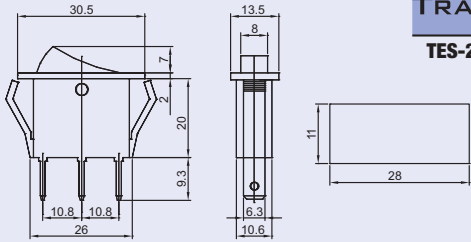




TRACON 

TES-13 6,3 × 0,8 mm **0-I** -

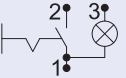


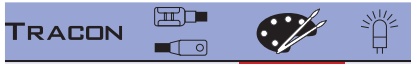
Înterupător Pornit - Oprit

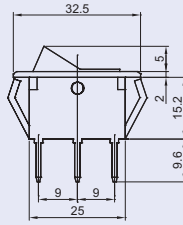
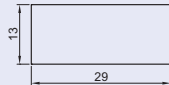
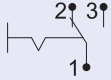
TRACON 

TES-21 6,3 × 0,8 mm **3** ✓

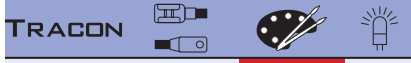




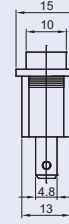
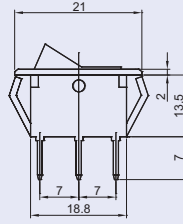
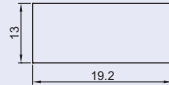
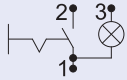
TES-22 4,8 × 0,8 mm **0-1** -



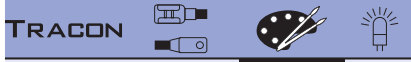
Comutator alternant



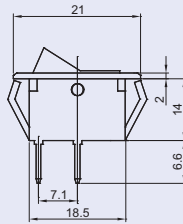
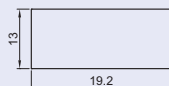
TES-33 4,8 × 0,8 mm **0-1** ✓



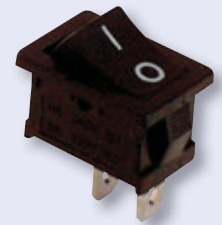
Înterupător Pornit - Oprit



TES-34 4,8 × 0,8 mm **0-1** -

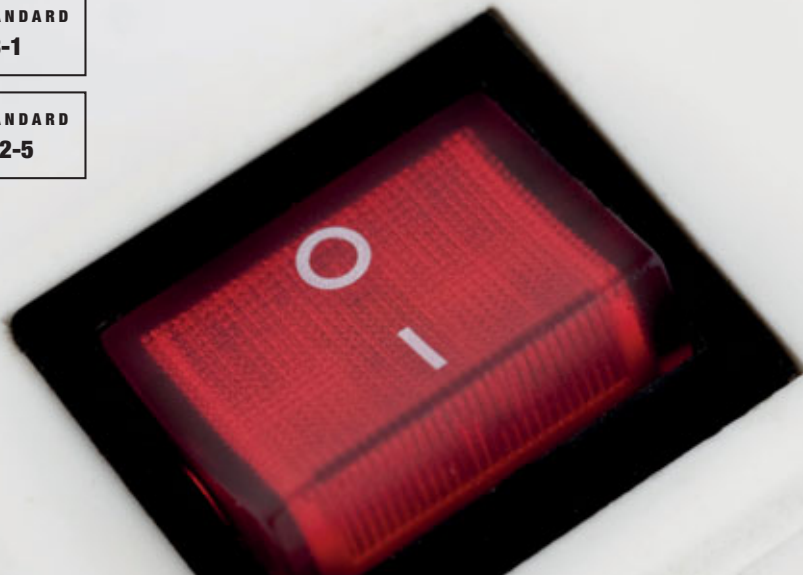


Înterupător Pornit - Oprit

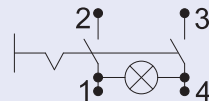
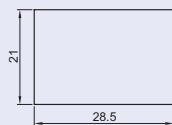
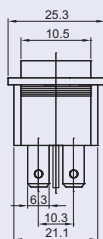
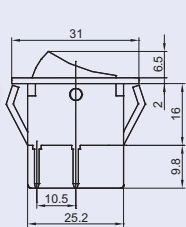
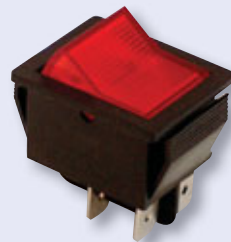


RELEVANT STANDARD
EN 61058-1

RELEVANT STANDARD
EN 61058-2-5



Înterupător Pornit - Oprit



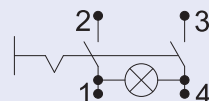
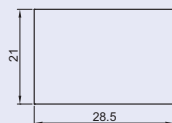
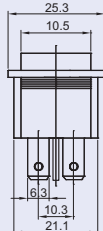
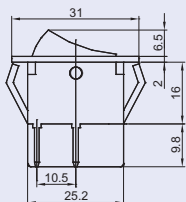
TRACON



TES-41 6,3 × 0,8 mm



Înterupător Pornit - Oprit



TRACON

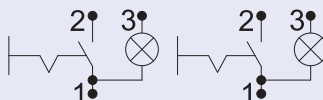
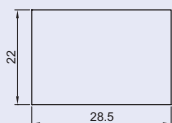
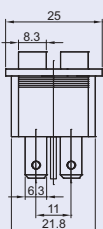
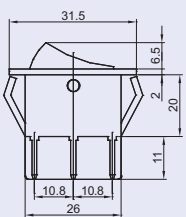


TES-42 6,3 × 0,8 mm

0-1



Înterupător Pornit - Oprit



TRACON

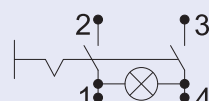
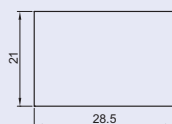
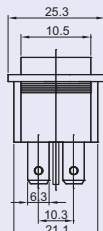
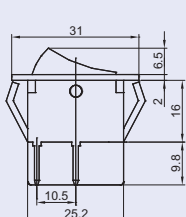


TES-43 6,3 × 0,8 mm

0-1, 0-1



Înterupător Pornit - Oprit



TRACON

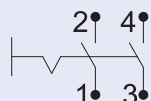
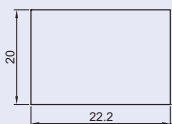
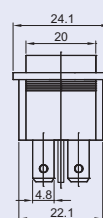
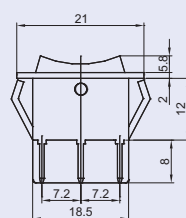


TES-44 6,3 × 0,8 mm

0-1



Înterupător Pornit - Oprit



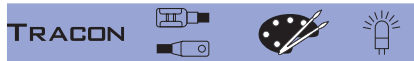
TRACON



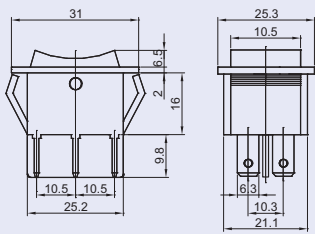
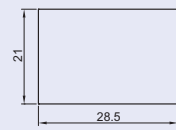
TES-51 4,8 × 0,8 mm

0-1



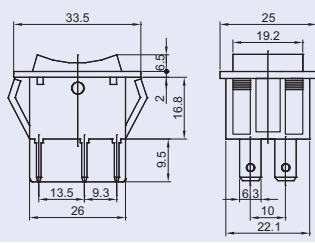
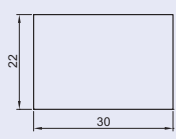
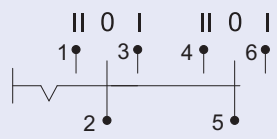


TES-52	6,3 × 0,8 mm	I-0-II	-
TES-52-2	6,3 × 0,8 mm	I-0-II	-



TES-52

Comutator bipolar



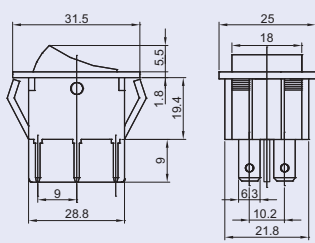
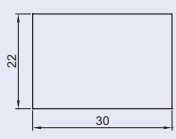
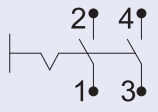
Comutator bipolar (Revenire cu arc)



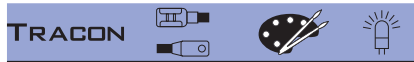
TES-52-2



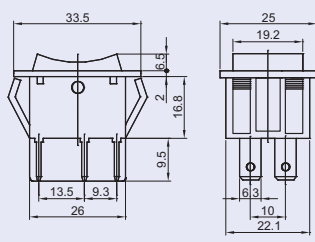
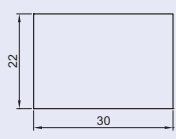
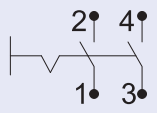
TES-53	6,3 × 0,8 mm	0-1	-
---------------	--------------	------------	---



Înterupător Pornit-Oprit



TES-53-1	6,3 × 0,8 mm	0-1	-
-----------------	--------------	------------	---



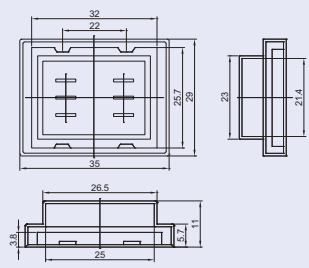
Înterupător Pornit-Oprit (Revenire cu arc)

TRACON

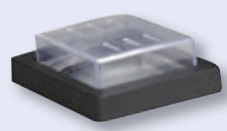
TES-GB	IP 55
---------------	--------------

Se utilizează pentru următoarele variante:

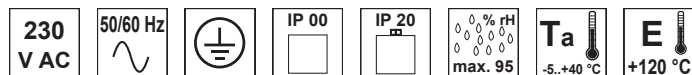
TES-42	TES-52-1
TES-43	TES-52-2
TES-52	TES-53



Membrană PVC

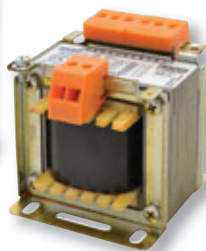


Transformatoare de separație monofazate TVTR



TRACON	P _n	U _{pr}	U _{sec}	P _{sec} *	I _{sec}
TVTR-50-A	50 VA	230 V	3-6-12-18-24 V	6,25-12,5-25-37,5-50 VA	2,08 A
TVTR-50-B		230 V	6-12-18-24 V	12,5-25-37,5-50 VA	2,08 A
TVTR-50-C		230 V	12-24-42 V	14,2-28,5-50 VA	1,19 A
TVTR-50-D		230 V	24-42-110 V	10-19-50 VA	0,45 A
TVTR-50-F		230 V	24-230 V	5,2-50 VA	0,21 A
TVTR-100-A		100 VA	230 V	3-6-12-18-24 V	12,5-25-50-75-100 VA
TVTR-100-B	230 V		6-12-18-24 V	25-50-75-100 VA	4,16 A
TVTR-100-C	230 V		12-24-42 V	28,5-57,1-100 VA	2,38 A
TVTR-100-D	230 V		24-42-110 V	21,8-38,1-100 VA	0,90 A
TVTR-100-F	230 V		24-230 V	10,4-100 VA	0,43 A
TVTR-150-B	150 VA		230 V	6-12-18-24 V	37,5-75-112,5-150 VA
TVTR-150-C		230 V	12-24-42 V	42,8-85,7-150 VA	3,57 A
TVTR-150-D		230 V	24-42-110 V	32,7-57,2-150 VA	1,36 A
TVTR-150-E		230 V	42-110-230 V	27,3-71,7-150 VA	0,65 A
TVTR-150-F		230 V	24-230 V	15,6-150 VA	0,65 A
TVTR-200-B		200 VA	230 V	6-12-18-24 V	50-100-150-200 VA
TVTR-200-C	230 V		12-24-42 V	57,1-114,2-200 VA	4,76 A
TVTR-200-D	230 V		24-42-110 V	43,6-76,3-200 VA	1,81 A
TVTR-200-E	230 V		42-110-230 V	36,5-95,6-200 VA	0,86 A
TVTR-200-F	230 V		24-230 V	20,8-200 VA	0,86 A

* funcție de tensiunea prizelor din secundar



Sunt acele transformatoare de separație la care înfășurarea primară este separată de cea secundară prin intermediul izolației de bază. Se pot utiliza pentru transferul de putere la joasă tensiune, pentru funcționare, semnalizare, comandă și alte circuite. Realizarea de tensiune foarte joasă de protecție (TFJP); conform standardului MSZ HD 60364-4-41. sau realizarea a unei simple separări pentru un singur consumator.

Sunt produse în variantă monofazată cu 8 valori nominale a tensiunii din înfășurarea secundară (3-6-12-18-24-42-110-230 V).

Transformatoarele respectă prescripțiile standardelor EN 61558-1 și EN 61558-2-1. Din punctul de vedere al gradului de protecție sunt deschise (IP 00) fiind destinate montării în tablouri, pentru legarea lor servesc clemele cu șurub IP 20. Gama de puteri este cuprinsă între 50-630 VA diferind în funcție de model. Secundarul transformatoarelor este realizat cu prize.

Pentru cea mai mare tensiune secundară se asigură puterea nominală, de aceea, în cazul prizelor odată cu scăderea tensiunii scade proporțional și puterea (vezi tabelul).

RELEVANT STANDARD
EN 61558-1

RELEVANT STANDARD
EN 61558-2-1




CITIȚI CODUL !

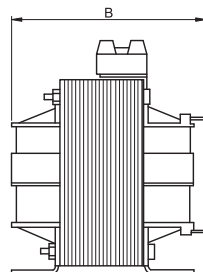
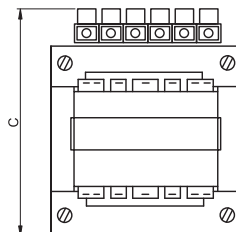
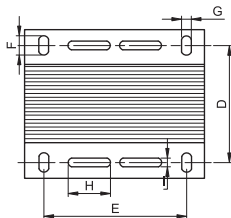
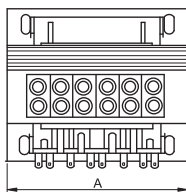
- Vezi noutățile noastre
- Fiți informat

Gama de produse se dezvoltă continuu și rapid!
Catalogul nostru reflectă situația din Aprilie 2019.
Pentru informații actualizate vizitați pagina noastră de internet!

TRACON	P_n	U_{pr}	U_{sec}	P_{sec} *	I_{sec}
TVTR-250-B	250 VA	230 V	6-12-18-24 V	62,5-125-187,5-250 VA	10,41 A
TVTR-250-C		230 V	12-24-42 V	71,4-142,8-250 VA	5,95 A
TVTR-250-D		230 V	24-42-110 V	54,5-95,4-250 VA	2,27 A
TVTR-250-E		230 V	42-110-230 V	45,6-119,5-250 VA	1,08 A
TVTR-250-F		230 V	24-230 V	26-250 VA	1,08 A
TVTR-300-B		300 VA	230 V	6-12-18-24 V	75-150-225-300 VA
TVTR-300-C	230 V		12-24-42 V	85,7-171,4-300 VA	7,14 A
TVTR-300-D	230 V		24-42-110 V	65,4-114,5-300 VA	2,72 A
TVTR-300-E	230 V		42-110-230 V	54,7-143,4-300 VA	1,30 A
TVTR-300-F	230 V		24-230 V	31,3-300 VA	1,30 A
TVTR-400-B	400 VA		230 V	6-12-18-24 V	100-200-300-400 VA
TVTR-400-C		230 V	12-24-42 V	114,2-228,5-400 VA	9,52 A
TVTR-400-D		230 V	24-42-110 V	87,2-152,7-400 VA	3,63 A
TVTR-400-E		230 V	42-110-230 V	73-191,3-400 VA	1,73 A
TVTR-400-F		230 V	24-230 V	41,7-400 VA	1,73 A
TVTR-500-C		500 VA	230 V	12-24-42 V	142,8-285,7-500 VA
TVTR-500-D	230 V		24-42-110 V	109-190,9-500 VA	4,54 A
TVTR-500-E	230 V		42-110-230 V	91,3-239,1-500 VA	2,17 A
TVTR-500-F	230 V		24-230 V	52,1-500 VA	2,17 A
TVTR-630-C	630 VA	230 V	12-24-42 V	180-360-630 VA	15 A
TVTR-630-D		230 V	24-42-110 V	137,4-240,5-630 VA	5,72 A
TVTR-630-E		230 V	42-110-230 V	115-301,3-630 VA	5,73 A
TVTR-630-F		230 V	24-230 V	65,7-630 VA	2,73 A

* funcție de tensiunea prizelor din secundar

TRACON	A (mm)	B (mm)	C (mm)	D (mm)	E (mm)	F (mm)	G (mm)	H (mm)	I (mm)	
TVTR-50	75	80	77	50	56	10	5,5	28	4	1,2 kg
TVTR-100	85	90	85	59	64	10	5,5	40	5	1,9 kg
TVTR-150	98	90	95	65	84	12	6	40	5	2,6 kg
TVTR-200	98	100	95	74	84	12	6	40	5	3,1 kg
TVTR-250	98	110	95	84	84	12	6	40	5	3,6 kg
TVTR-300	110	110	103	82	90	12	6	-	-	4,6 kg
TVTR-400	123	112	110	84	90	14	7	50	5	5,3 kg
TVTR-500	122	120	107	98	90	14	7	50	5	6,3 kg
TVTR-630	154	115	135	87	122	22	8	50	5	7,2 kg



CITIȚI CODUL !

- Vezi noutățile noastre
- Fiți informat

Gama de produse se dezvoltă continuu și rapid!
Catalogul nostru reflectă situația din Aprilie 2019.
Pentru informații actualizate vizitați pagina noastră de internet!

Transformatoare monofazate de siguranță și izolare TVTRB

230/400
V AC

50/60 Hz



IP 00

IP 20

max. 95% rh

Ta
-5...+40 °C

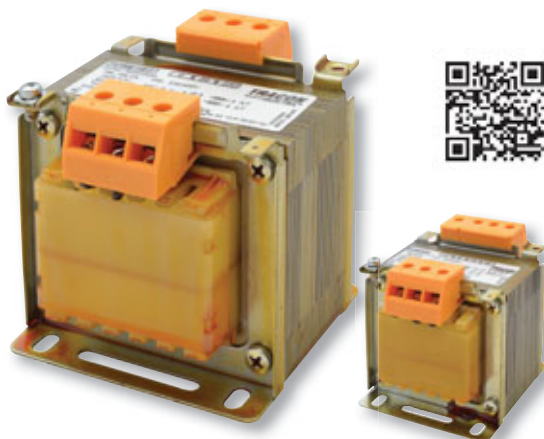
E
+120 °C

Legendă
pictograme

K/0

TRACON	P _n	U _{pr}	U _{sec}	P _{sec} *	I _{sec}
TVTRB-60-A	60 VA	230-400 V	6-12-24 V	15-30-60 VA	2,5 A
TVTRB-60-F		230-400 V	24-230 V	6,2-60 VA	0,26 A
TVTRB-60-O		230 V	42 V	60 VA	1,43 A
TVTRB-100-A	100 VA	230-400 V	6-12-24 V	25-50-100 VA	4,17 A
TVTRB-100-F		230-400 V	24-230 V	10,4-100 VA	0,43 A
TVTRB-100-O		230 V	42 V	100 VA	2,38 A

* funcție de tensiunea din secundar



RELEVANT STANDARD
EN 61558-1

RELEVANT STANDARD
EN 61558-2-4

Se pot utiliza pentru transferul de putere la joasă tensiune, pentru funcționare, semnalizare, comandă și alte circuite pentru izolare de separare conform standardului **MSZ HD 60364-4-41** pentru realizarea de **tensiune foarte joasă de securitate (TFJS)**. Înfășurarea primară este distinctă de înfășurarea secundară, având izolație întărită între acestea.

Se întâlnesc: - Transformatoare de siguranță și izolare cu tensiuni secundare sub 50V, (**TFJS**) tensiune foarte joasă de securitate.

- Transformatoare de izolare, cu tensiuni secundare mai mari de 50V.

Câteva transformatoare respectă prescripțiile standardelor **EN 61558-1** și **EN 61558-2-4**. Din punctul de vedere al gradului de protecție sunt deschise (IP 00) fiind destinate montării în tablouri, pentru legarea lor servesc clemele cu șurub.

Gama de puteri este cuprinsă între 60-600 VA diferind în funcție de model. Secundarul transformatoarelor este realizat cu prize. Pentru cea mai mare tensiune secundară se asigură puterea nominală, de aceea, în cazul prizelor odată cu scăderea tensiunii scade proporțional și puterea (vezi tabelul).


Transformatoare (reductoare) de curent



L/26

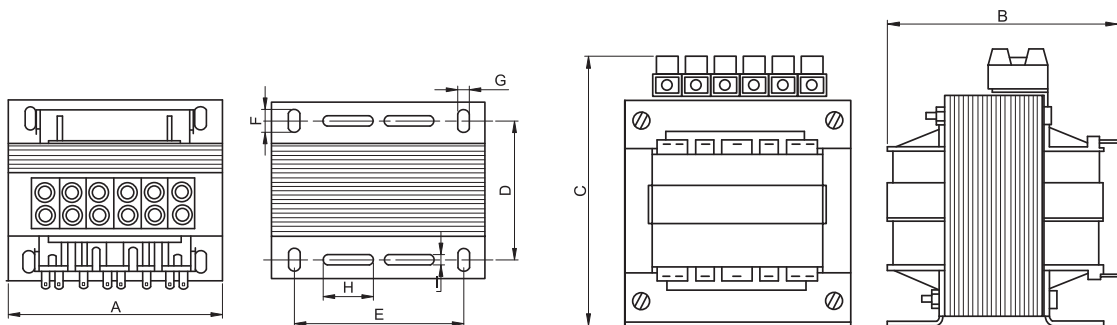
TRACON	P_n	U_{pr}	U_{sec}	P_{sec} *	I_{sec}
TVTRB-160-B	160 VA	230-400 V	12-24 V	80-160 VA	6,67 A
TVTRB-160-F		230-400 V	24-230 V	16,7-160 VA	0,70 A
TVTRB-160-M		230 V	12 V	160 VA	13,34 A
TVTRB-250-B	250 VA	230-400 V	12-24 V	125-250 VA	10,42 A
TVTRB-250-F		230-400 V	24-230 V	26-250 VA	1,09 A
TVTRB-250-O		230 V	42 V	250 VA	5,95 A
TVTRB-400-B	400 VA	230-400 V	12-24 V	200-400 VA	16,67 A
TVTRB-400-F		230-400 V	24-230 V	41,74-400 VA	1,74 A
TVTRB-400-O		230 V	42 V	400 VA	9,52 A
TVTRB-400-R	600 VA	400 V	24 V	400 VA	16,67 A
TVTRB-600-B		230-400 V	12-24 V	300-600 VA	25 A
TVTRB-600-D		230-400 V	24-42 V	342,9-600 VA	14,29 A
TVTRB-600-F	600 VA	230-400 V	24-230 V	62,6-600 VA	2,61 A
TVTRB-600-O		230 V	42 V	600 VA	14,29 A
TVTRB-600-R		400 V	24 V	600 VA	25 A

* funcție de tensiunea din secundar

TRACON	A (mm)	B (mm)	C (mm)	D (mm)	E (mm)	F (mm)	G (mm)	H (mm)	I (mm)	
TVTRB-60	75	90	76	60	56	10	5	28	4	1,5 kg
TVTRB-100	84	89	84	54	64	10	5,5	40	5	2,0 kg
TVTRB-160	96	80	108	70	84	11	5,8	35	3,6	2,4 kg
TVTRB-250	98	98	95	65	84	12	6	40	5	2,7 kg
TVTRB-400	123	115	110	84	90	14	7	50	5	5,3 kg
TVTRB-600	155	135	135	98	122	22	8	50	5	7,7 kg

RELEVANT STANDARD
EN 61558-1

RELEVANT STANDARD
EN 61558-2-1



CITIȚI CODUL !

- Vezi noutățile noastre
- Fiți informat

**Gama de produse se dezvoltă continuu și rapid!
Catalogul nostru reflectă situația din Aprilie 2019.
Pentru informații actualizate vizitați pagina
noastră de internet!**