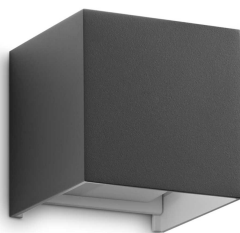


## Info generali

## Esterno - Lampade da parete

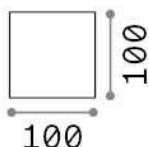
Outdoor wall mounted adjustable lamp with integrated LED sources and direct/indirect light emission



<b>Ean</b>	8021696313429
<b>Articolo</b>	ATOM AP D10 ANTRACITE
<b>Installazione</b>	Lampade da parete
<b>Garanzia</b>	5 years
<b>Peso lordo</b>	0.71 kg
<b>Volume</b>	0.001331 m <sup>3</sup>

## Info tecniche e installative

<b>Peso netto</b>	0.66 kg
<b>Classe di isolamento</b>	I
<b>Grado di protezione</b>	IP54
<b>Conformità</b>	CE
<b>Temperatura d'esercizio</b>	-
<b>Efficienza a pieno carico</b>	x
<b>Dimmer</b>	NO, On-Off
<b>Alimentazione</b>	220-240 V AC 50/60 Hz
<b>Alimentatore</b>	In-built, included Replaceable (by qualified operators only), electronic



## Info sorgente e prestazionali

<b>Sorgente integrata</b>	Integrated LED module
<b>Sorgente sostituibile</b>	No
<b>Potenza</b>	LED 12 W
<b>Emissione</b>	Direct + Indirect
<b>Consumo massimo</b>	max 12,00 W
<b>Caratteristiche LED</b>	LED COB
<b>CCT LED</b>	3000 K
<b>Durata LED (t. 25°C)</b>	30000 h
<b>CRI</b>	> 90
<b>Flusso sorgente</b>	1050 lm
<b>Flusso utile</b>	670 lm
<b>Rischio fotobiologico</b>	1
<b>Lampadina inclusa</b>	1 - E14 OLIVA 4W 3000K CRI80 SATIN