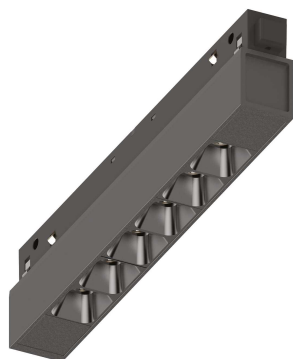


## Info generali

### Tecnico - Sistemi

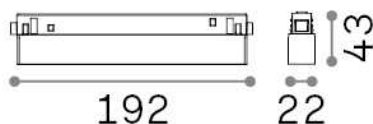
Indoor track mounted dimmable linear fitting with integrated LED sources and direct light emission



|                      |                               |
|----------------------|-------------------------------|
| <b>Ean</b>           | 8021696303499                 |
| <b>Articolo</b>      | EGO ACCENT 07W 3000K 1-10V BK |
| <b>Installazione</b> | Sistemi                       |
| <b>Garanzia</b>      | 5 years                       |
| <b>Peso lordo</b>    | 0.21 kg                       |
| <b>Volume</b>        | 0.001556 m <sup>3</sup>       |

## Info tecniche e installative

|                                  |                                       |
|----------------------------------|---------------------------------------|
| <b>Peso netto</b>                | 0.14 kg                               |
| <b>Classe di isolamento</b>      | III                                   |
| <b>Grado di protezione</b>       | IP20                                  |
| <b>Conformità</b>                | CE                                    |
| <b>Temperatura d'esercizio</b>   | 0° ~ +40 °C                           |
| <b>Efficienza a pieno carico</b> | X                                     |
| <b>Dimmer</b>                    | 1, 1-10V                              |
| <b>Alimentazione</b>             | 48 V DC                               |
| <b>Alimentatore</b>              | Required, remoted, not included<br>NO |
| <b>Orientabilità</b>             | vert. 0°-90°                          |
| <b>Accessori non inclusi</b>     | Ego profile                           |



## Info sorgente e prestazionali

|                              |   |
|------------------------------|---|
| <b>Sorgente integrata</b>    | Integrated LED module                     |
| <b>Sorgente sostituibile</b> | Replaceable (by qualified operators only) |
| <b>Potenza</b>               | 7 W                                       |
| <b>Emissione</b>             | Direct                                    |
| <b>Consumo massimo</b>       | max 7,00 W                                |
| <b>Caratteristiche LED</b>   | LED SMD OSRAM                             |
| <b>CCT LED</b>               | 3000 K                                    |
| <b>Durata LED (t. 25°c)</b>  | 50000 h                                   |
| <b>CRI</b>                   | > 90                                      |
| <b>SDCM</b>                  | 3   |
| <b>Fascio luminoso</b>       | 35°                                       |
| <b>UGR massimo</b>           | < 19                                      |
| <b>Flusso sorgente</b>       | 700 lm                                    |
| <b>Flusso utile</b>          | 590 lm                                    |
| <b>Rischio fotobiologico</b> | 2   |
| <b>Potenza in stand-by</b>   | < 0.50 W                                  |