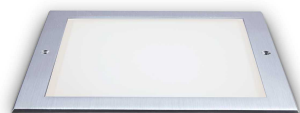


Info generali

Esterno - Lampade da incasso

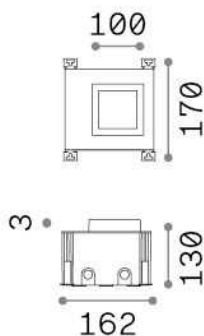
Outdoor ground recessed or ceiling recessed projector with integrated LED sources and direct light emission



| | |
|----------------------|---------------------------|
| Ean | 8021696325644 |
| Articolo | TAURUS PT D10 WIDE SQUARE |
| Installazione | Lampade da incasso |
| Garanzia | 5 years |
| Peso lordo | 1.1 kg |
| Volume | - |

Info tecniche e installative

| | |
|----------------------------------|--|
| Peso netto | 1.1 kg |
| Classe di isolamento | I |
| Grado di protezione | IP67 |
| Conformità | CE |
| Temperatura d'esercizio | -15° ~ +45 °C |
| Efficienza a pieno carico | X |
| Dimmer | NO, On-Off |
| Alimentazione | 220-240 V AC 50/60 Hz |
| Alimentatore | In-built, included Replaceable (by qualified operators only), electronic |
| Specifiche per l'incasso | Ø 92 - h. ≥ 110 , 5-30 |
| Orientabilità | vert. +/-30° |



Info sorgente e prestazionali

| | |
|------------------------------|---|
| Sorgente integrata | Integrated LED module |
| Sorgente sostituibile | Replaceable (by qualified operators only) |
| Potenza | 6 W |
| Emissione | Direct |
| Consumo massimo | max 6,00 W |
| Caratteristiche LED | LED SMD BRIDGELUX |
| CCT LED | 3000 K |
| Durata LED (t. 25°c) | 50000 h |
| CRI | > 80 |
| Fascio luminoso | 114° |
| Flusso sorgente | 620 lm |
| Flusso utile | 180 lm |