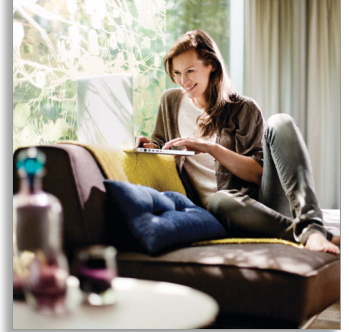




Philips InStyle
Suspension light

Attilio
matt chrome
LED

InStyle



40545/17/13



Decorate your home with light

These slim, futuristic flat-shaped suspension lights hanging elegantly from a thin cord are distinctive and elegant indeed. Each provides strong warm white light without glare from a large frosted glass dome.

Fit the lighting you really want

- Expressive and elegant forms, premium materials
- Multiple applications and finishes to suit your taste

Advanced LED light

- High Power LED
- Warm white light effect
- Adjustable light intensity with dimmer switch

Special characteristics

- The height of the pendant is easy adjustable

Sustainable light solutions

- Extremely long operating life
- Energy saving
- Philips offers 5 year warranty on the LED module and driver



asimpleswitch.com

PHILIPS

Suspension light
Attilio matt chrome, LED

405451713

Highlights

Forms and materials

Philips inStyle lighting fixtures are designed to fit perfectly with the best of all interior decoration, offering multiple styles to blend perfectly in anyone's home. With many applications and finishes, it combines well with features like curtains, furniture, paint and accessories to complete the look you desire. Carefull attention to details and designs helps you to express your personal style, for interior decoration just the way you want it. This means inviting ambience and surroundings that friends, family and you will enjoy.

Multiple applications



If you enjoy design, and like to experiment with the latest styles and themes in your home, try Philips inStyle. It's a range of decorative suspension lights, wall lights, ceiling lights, floor and table lamps in premium materials and different colors.

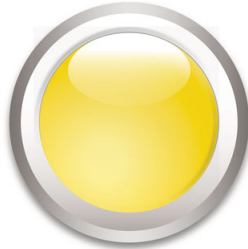
High Power LED



The LED module of this lamp is a uniquely developed solution by Philips combining 3 LEDs in a synthetic and aluminium housing.

This technique enables an optimal light output and a 100% uniform light colour.

Warm white light effect



Light up your home with warm white light effects thanks to the latest LED innovation. Philips introduces the latest generation of warm white light high power LEDs, reaching a colour temperature of 2700 Kelvin. This innovation brings the Philips lighting fixtures to the next level, allowing you to combine elegance and ambience creation with light and energy efficiency.

Dimmable



Adjust the light intensity of the Philips LED lights with a dimmer switch (not included). This makes this light ideal for creating an ambience for any occasion, whether a cosy meal à deux or chilling out with family and friends in your living room. Philips tested a number of wall dimmers that have proved to be compliant with our LED lights. A list of compatible dimmers is available in the downloads and support section.

Adjustable height

This Philips pendant light is delivered with long cables to offer you a maximum flexibility during and after installation. Choose the perfect height matching your needs.

Energy saving



This Philips light conserves energy compared to traditional light sources, helping you to save money on your electricity bills and do your bit for the environment.

Extremely long operating life



A light source you can trust. Philips LED lights offer an extremely long-life of at least 20.000 hours (which equals 20 years on basis of an average use of 3 hours / day with an amount of at least of 13.000 on/off switching cycles). With the Philips LED lights you won't have to worry about maintenance or lamp replacement while having the perfect light ambience in your home.

Specifications

Design and finishing

- Material: metal, glass
- Color: matt chrome

Extra feature/accessory incl.

- Dimmable
- Adjustable height
- LED integrated
- 5 years warranty

Product dimensions & weight

- Height minimum: 0.0 cm
- Height maximum: 150 cm
- Length: 14 cm
- Width: 14 cm
- Net weight: 1.519 kg

Technical specifications

- Mains power: Range 220 V - 240 V, 50-60 Hz
- Bulb technology: LED, Safety Extra Low Voltage
- Number of bulbs: 1
- Wattage bulb included: 6 W
- Light color: warm white

- Total lumen output fixture: 290 lm
- Fixture dimmable
- LED
- Lifetime up to: 20,000 hrs
- IP code: IP20, protection against objects bigger than 12.5 mm, no protection against water
- Class of protection: I - earthed
- Light source equivalent to traditional bulb of: 56 W

Service

- Warranty: 5 year(s)

Packaging dimensions & weight

- Height: 21.6 cm
- Length: 15.8 cm
- Width: 15.8 cm
- Weight: 1.828 kg

Miscellaneous

- Especially designed for: Living- & Bedroom, Kitchen
- Style: Contemporary
- Type: Suspension light



Issue date 2018-10-05

Version: 5.0.1

12 NC: 9150 024 30301
EAN: 54 13987 07960 3

© 2018 Philips Lighting Holding B.V.
All Rights reserved.

Specifications are subject to change without notice.
Trademarks are the property of Philips Lighting Holding B.V. or their respective owners.

www.philips.com